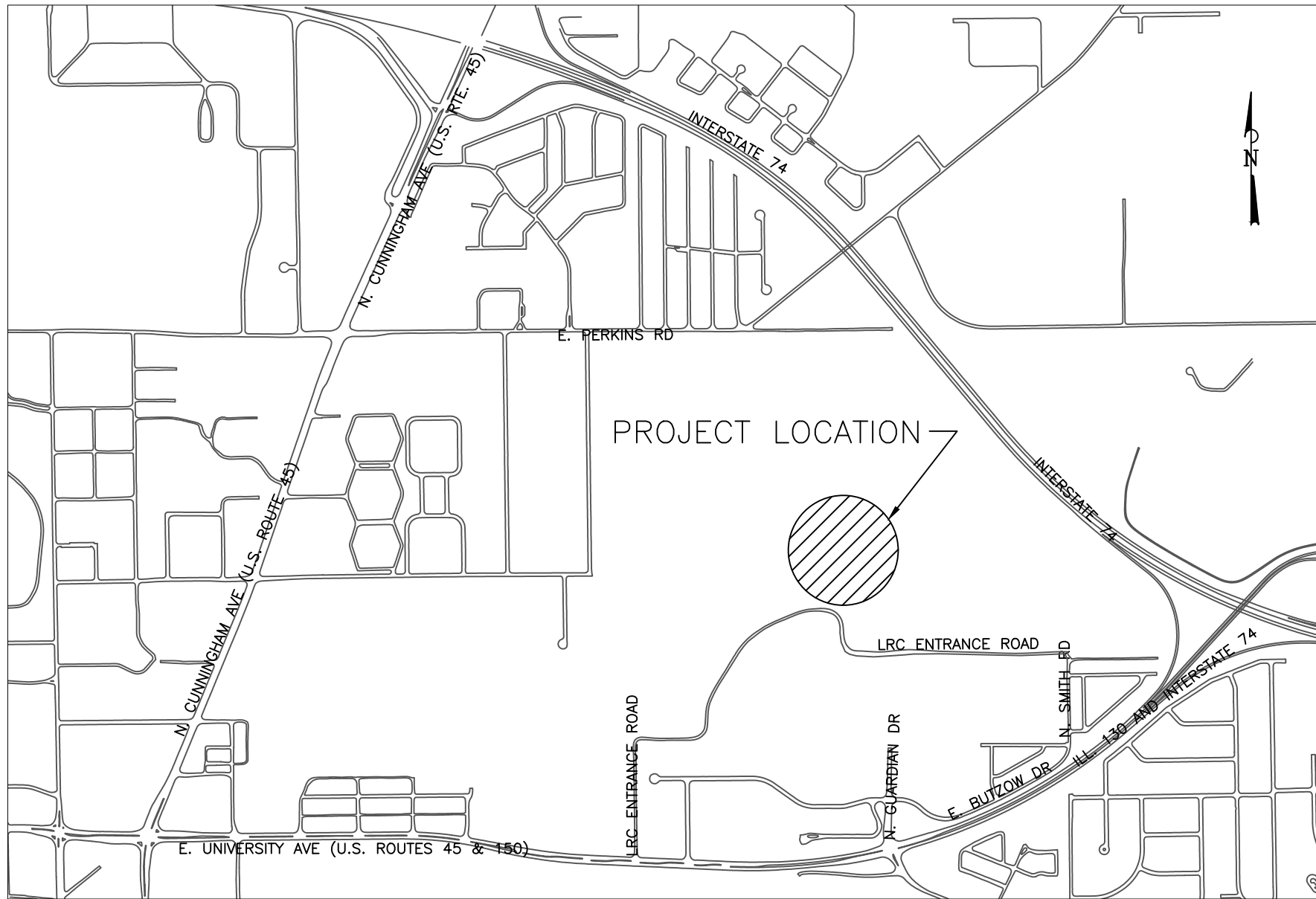


CITY OF URBANA  
 PLANS FOR PROPOSED  
 URBANA LANDFILL LEACHATE PUMPING PROJECT  
 FORCEMAIN SYSTEM  
 CITY SECTION: 11-00501-00-SP



INDEX OF SHEETS

1. COVER SHEET
2. NOTE SHEET
3. PLAN & PROFILE
4. DETAILS
5. DETAILS

APPROVED BY:	CITY ENGINEER SEA
PUBLIC WORKS DIRECTOR CITY ENGINEER	DATE
	LICENSE EXPIRES 11/30/13



TOLL FREE J.U.L.I.E. TELEPHONE NUMBER 1-800-892-0123

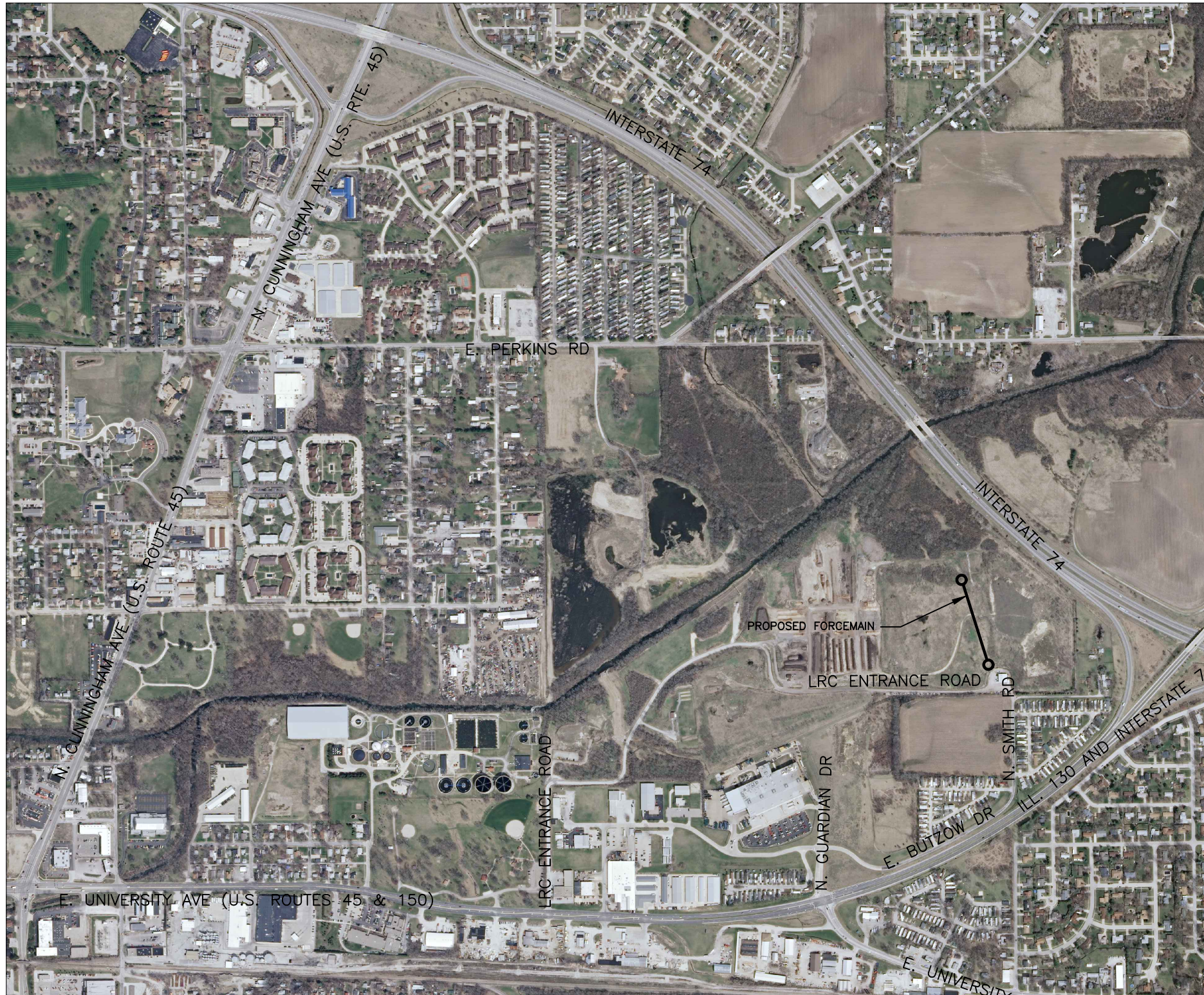


PREPARED BY:  
 CITY OF URBANA  
 ENGINEERING DIVISION  
 706 S. GLOVER  
 URBANA, IL 61802

URBANA LANDFILL LEACHATE  
 PUMPING PROJECT  
 COVER SHEET

DATED: MAY 15, 2013	DRAWN BY:
DESIGNED BY: B.M.B	CHECKED BY:

SHEET 1 OF 5



**GENERAL SITE PLAN**  
NOT TO SCALE

**GENERAL NOTES:**

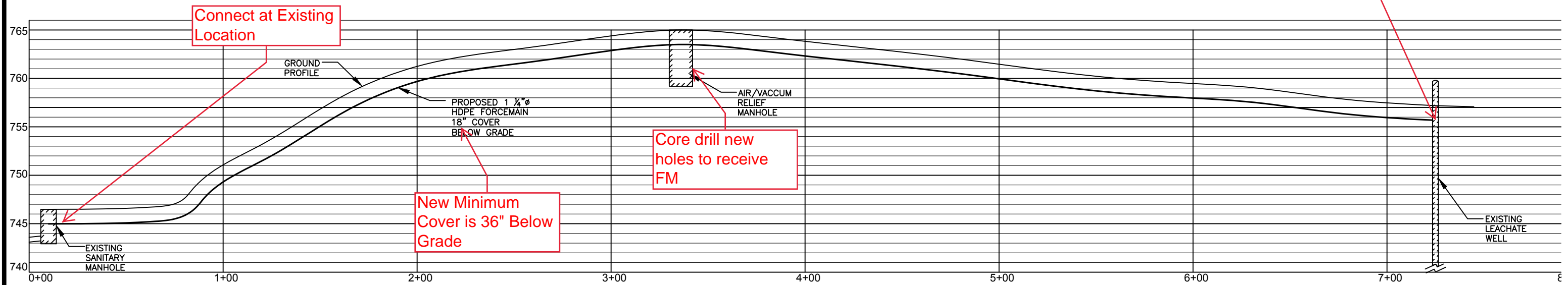
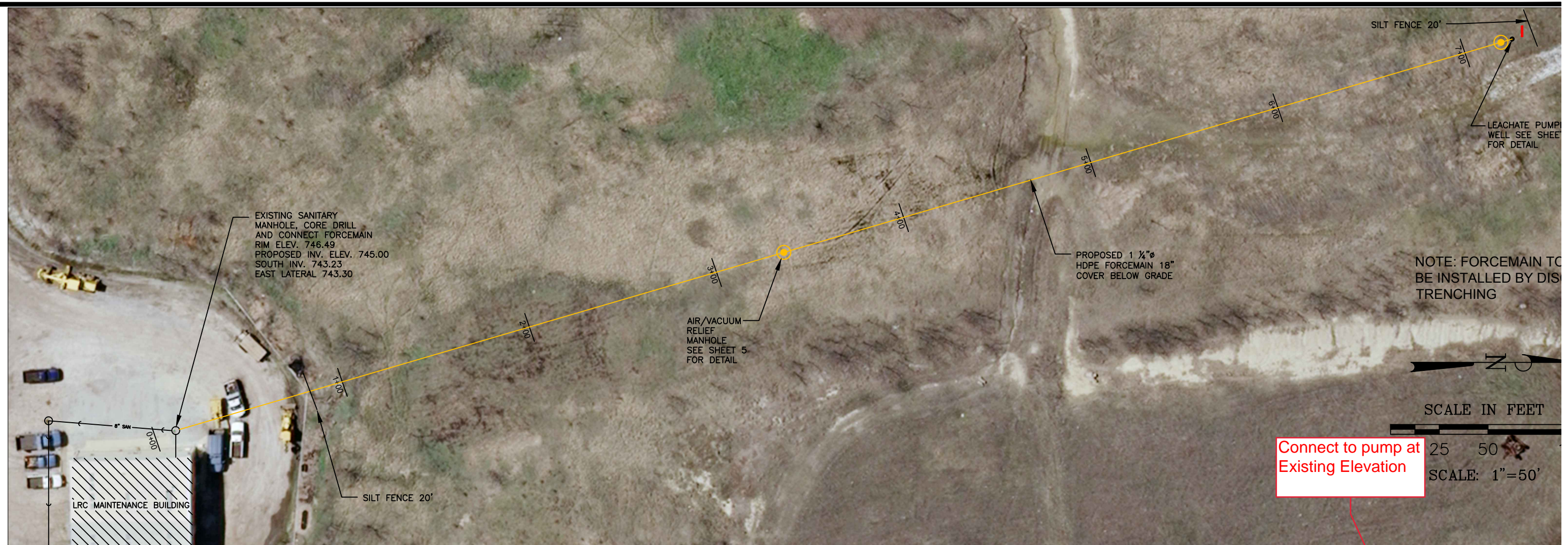
- 1) THE CONTRACTOR IS RESPONSIBLE TO MAINTAIN THE VERTICAL GRADES AND HORIZONTAL ALIGNMENT AS SHOWN ON THE PLANS. THE CITY'S PROJECT REPRESENTATIVE WILL PROVIDE INITIAL PIPE ALIGNMENT STAKEOUT AND BENCHMARKS AT THE CONTRACTORS REQUEST AND WILL ASSIST THE CONTRACTOR WITH ELEVATION AND LOCATION FIELD CHECKS. ALL MAINTENANCE AND RESETTING SHALL BE THE RESPONSIBILITY OF THE CONTRACTOR.
- 2.) THIS PROJECT IS TO BE DONE ACCORDING TO THE NATIONAL POLLUTANT DISCHARGE ELIMINATION SYSTEM (NPDES) STORM WATER PERMIT FOR CONSTRUCTION SITE ACTIVITIES, ILR40. IN ORDER TO COMPLY WITH THESE REQUIREMENTS THIS PROJECT SHALL BE DONE UNDER CITY OF URBANA GENERAL PERMIT ILR400462.
- 3) CONTRACTOR IS ADVISED TO VISIT THE SITE PRIOR TO PROJECT BID.
- 4) CONTRACTOR SHALL BE RESPONSIBLE FOR ALL FITTINGS NECESSARY TO INSTALL THE FORCEMAIN. CONTRACTOR SHALL NOT EXCEED THE MAXIMUM DEFLECTION AS ESTABLISHED BY THE HDPE PIPE MANUFACTURER, AND THE AMERICAN WATER WORKS ASSOCIATION.



PREPARED BY:  
CITY OF URBANA  
ENGINEERING DIVISION  
706 S. GLOVER  
URBANA, IL 61802

**URBANA LANDFILL LEACHATE  
PUMPING PROJECT  
NOTE SHEET**

DATED: MAY 15, 2013	DRAWN BY:
DESIGNED BY: B.M.B	CHECKED BY:
<b>SHEET 2 OF</b>	



SCALE  
 HORIZ. 1"=50'  
 VERT. 1"=5'

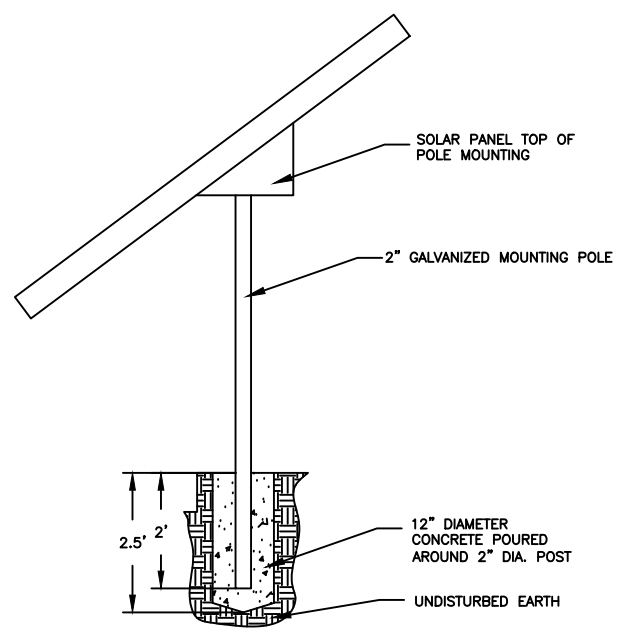
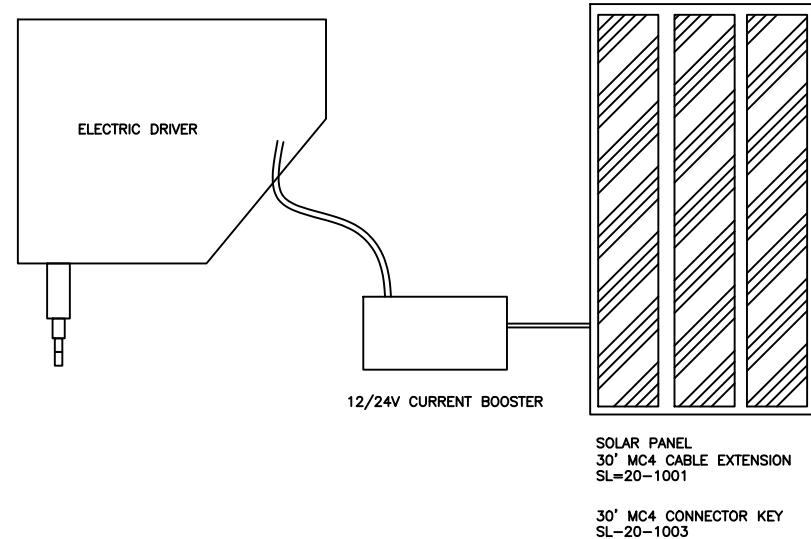


PREPARED BY:  
 CITY OF URBANA  
 ENGINEERING DIVISION  
 706 S. GLOVER  
 URBANA, IL 61802

URBANA LANDFILL LEACHATE  
 PUMPING PROJECT  
 PLAN AND PROFILE

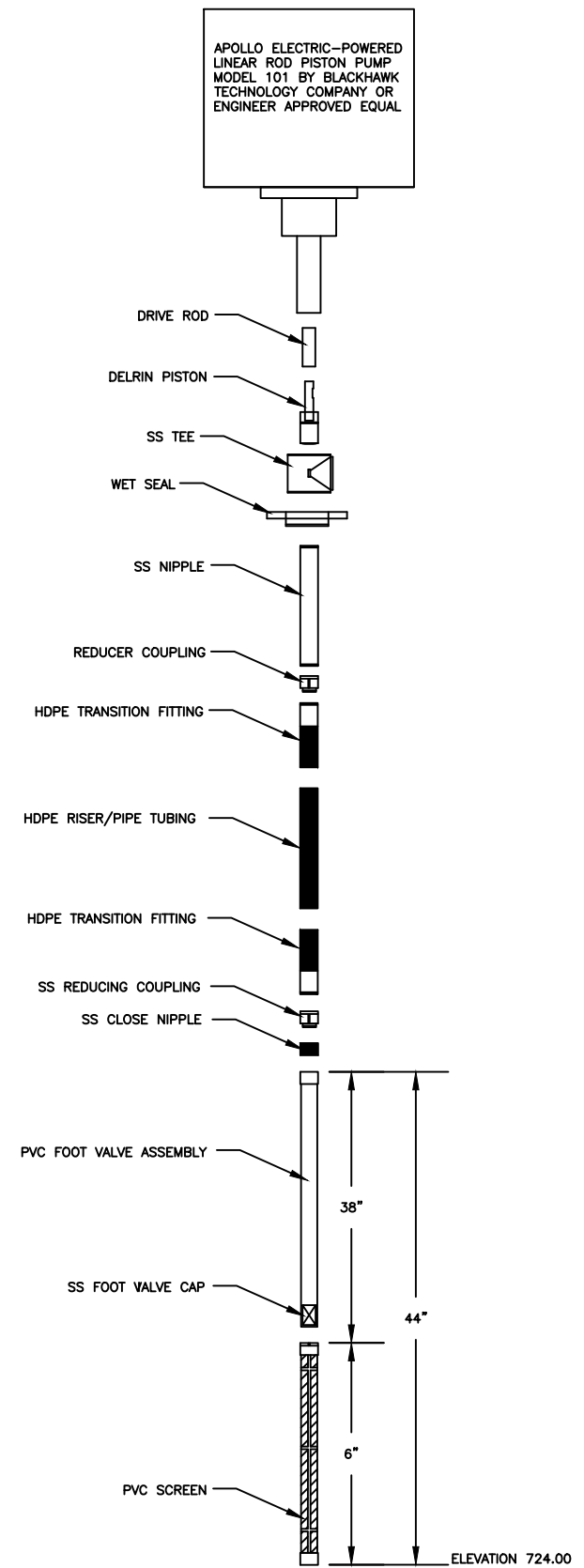
DATED: MAY 15, 2013	DRAWN BY:
DESIGNED BY: B.M.B	CHECKED BY:

SHEET 3 OF :



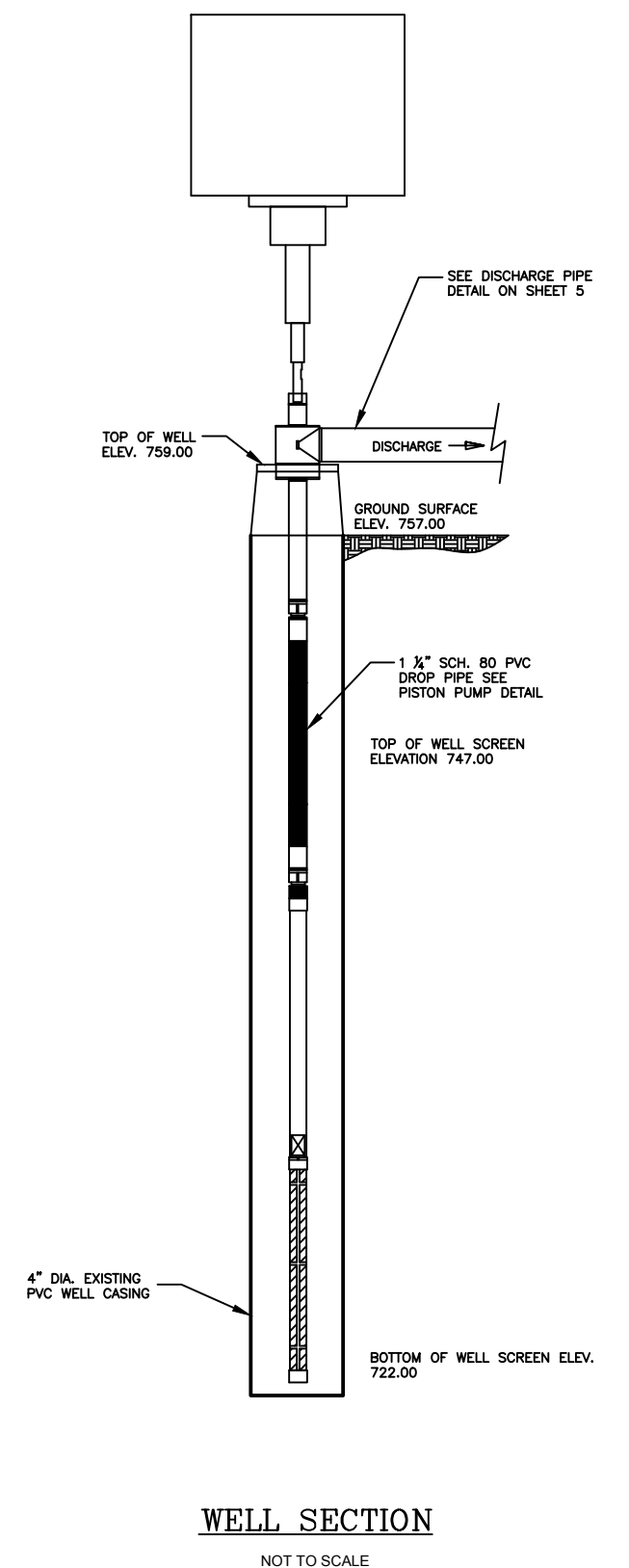
**SOLAR PANEL MOUNTING DETAIL**

NOT TO SCALE



**PISTON PUMP DETAIL**

NOT TO SCALE



**WELL SECTION**

NOT TO SCALE

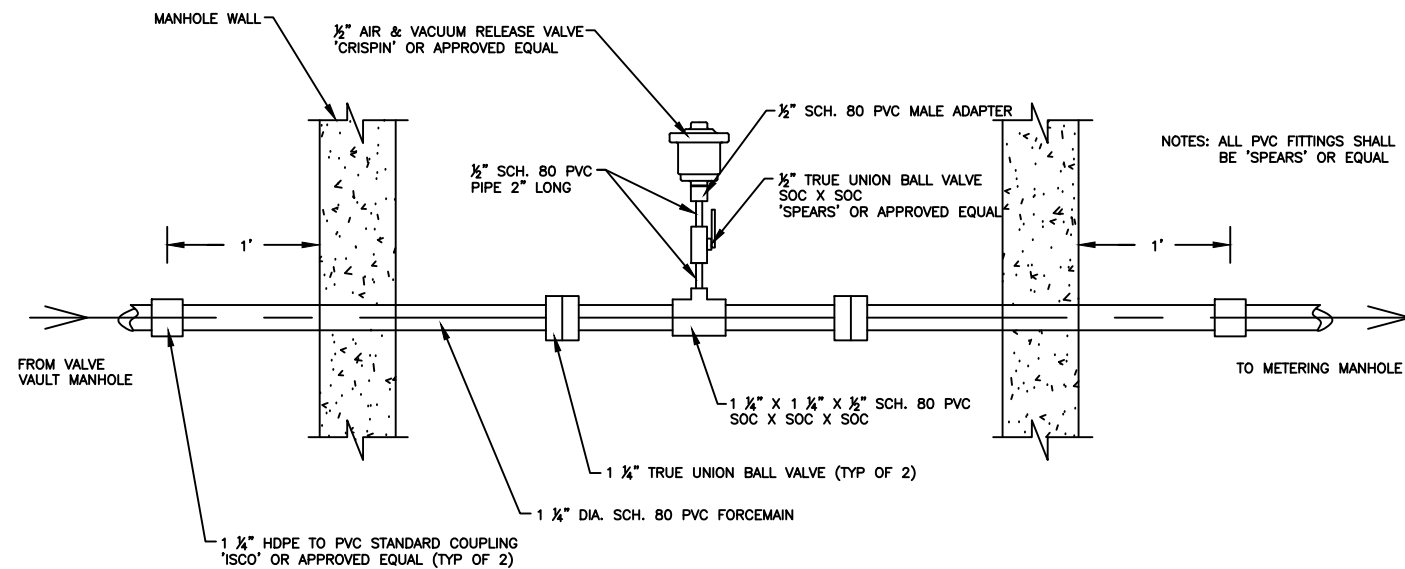


PREPARED BY:  
CITY OF URBANA  
ENGINEERING DIVISION  
706 S. GLOVER  
URBANA, IL 61802

URBANA LANDFILL LEACHATE  
PUMPING PROJECT  
DETAILS

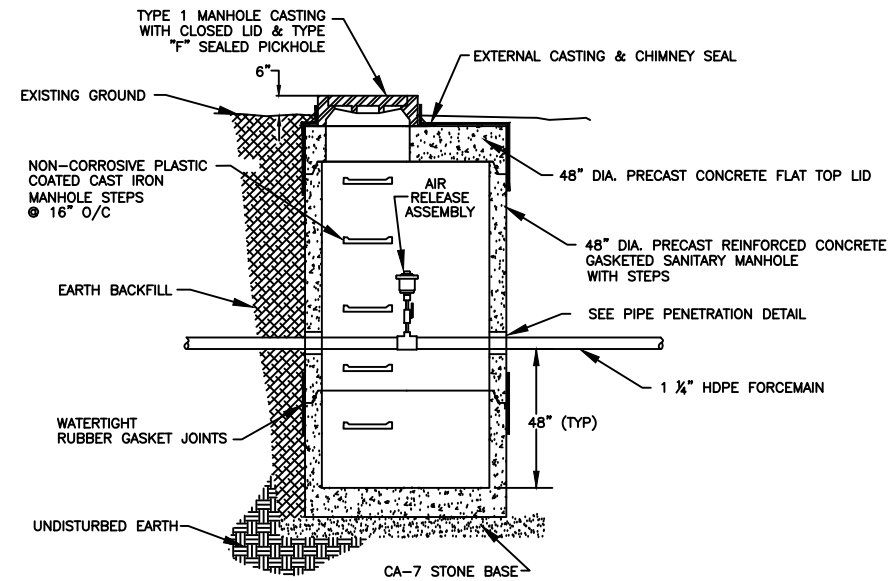
DATED: MAY 15, 2013	DRAWN BY:
DESIGNED BY: B.M.B	CHECKED BY:

SHEET 4 OF 4



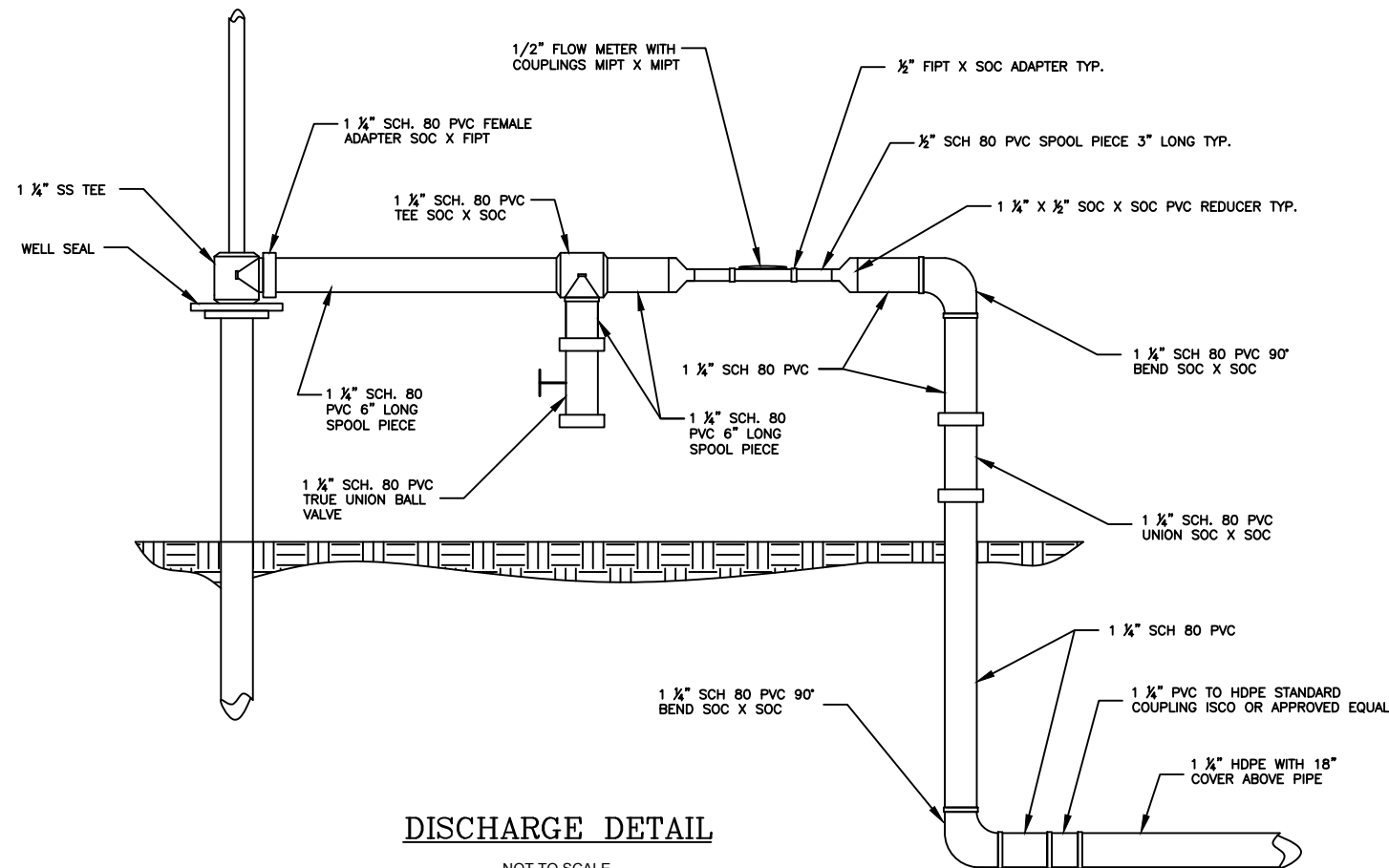
**AIR RELEASE ASSEMBLY DETAIL**

NOT TO SCALE



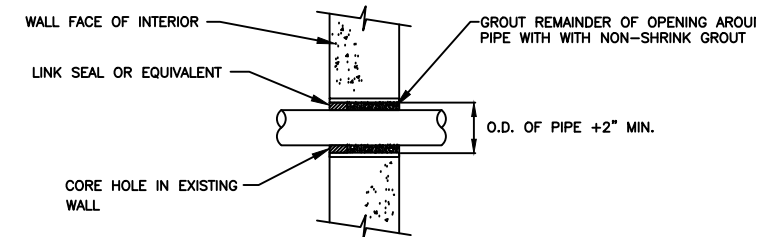
**AIR RELEASE MANHOLE DETAIL**

NOT TO SCALE



**DISCHARGE DETAIL**

NOT TO SCALE



**PIPE PENETRATION DETAIL**

NOT TO SCALE



PREPARED BY:  
CITY OF URBANA  
ENGINEERING DIVISION  
706 S. GLOVER  
URBANA, IL 61802

**URBANA LANDFILL LEACHATE  
PUMPING PROJECT  
DETAILS**

DATED: MAY 15, 2013  
DESIGNED BY: B.M.B.  
DRAWN BY:  
CHECKED BY: