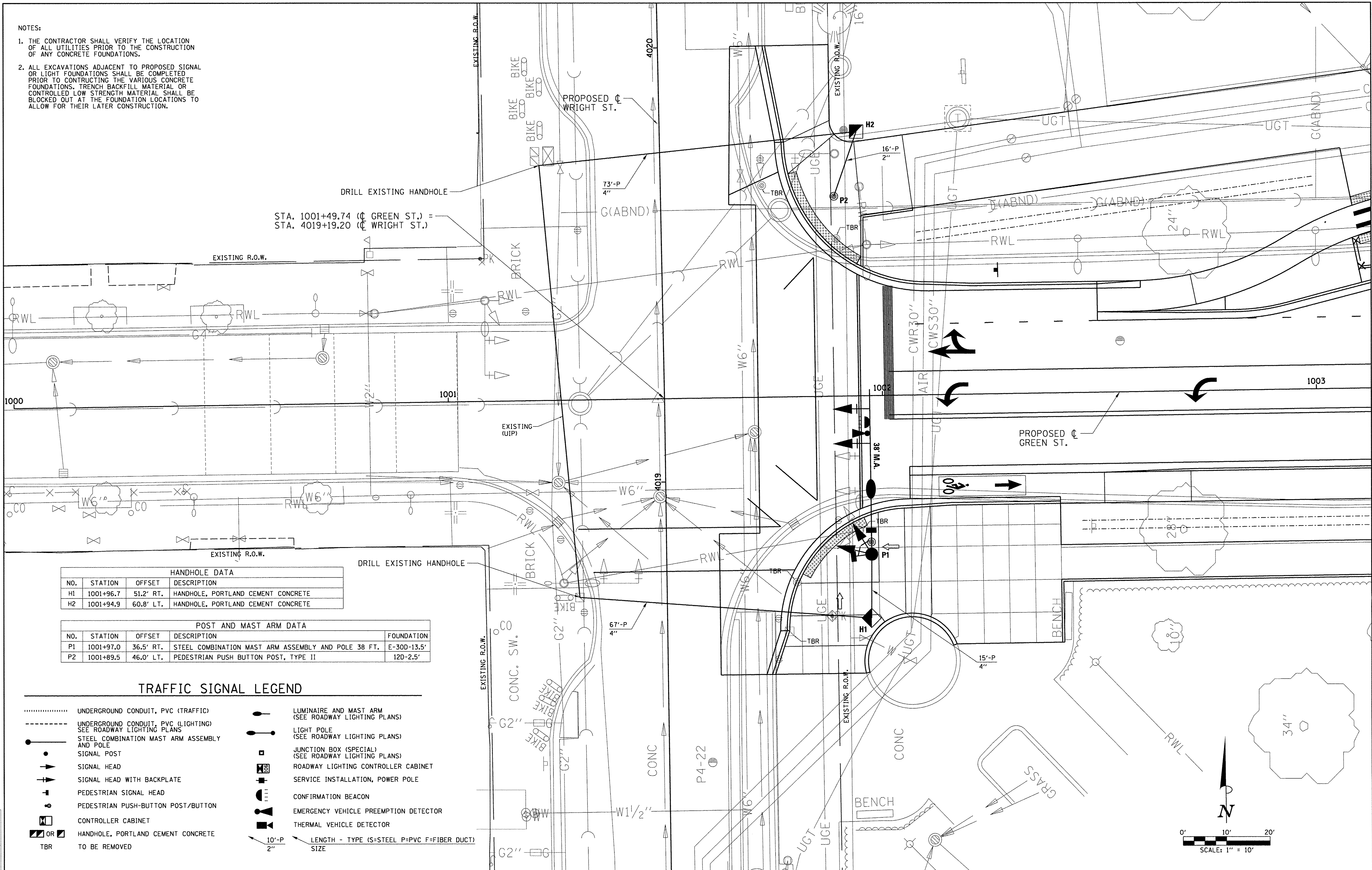


© Copyright Hanson Professional Services Inc. 2016



- NOTES:
1. THE CONTRACTOR SHALL VERIFY THE LOCATION OF ALL UTILITIES PRIOR TO THE CONSTRUCTION OF ANY CONCRETE FOUNDATIONS.
 2. ALL EXCAVATIONS ADJACENT TO PROPOSED SIGNAL OR LIGHT FOUNDATIONS SHALL BE COMPLETED PRIOR TO CONSTRUCTING THE VARIOUS CONCRETE FOUNDATIONS. TRENCH BACKFILL MATERIAL OR CONTROLLED LOW STRENGTH MATERIAL SHALL BE BLOCKED OUT AT THE FOUNDATION LOCATIONS TO ALLOW FOR THEIR LATER CONSTRUCTION.



HANDHOLE DATA			
NO.	STATION	OFFSET	DESCRIPTION
H1	1001+96.7	51.2' RT.	HANDHOLE, PORTLAND CEMENT CONCRETE
H2	1001+94.9	60.8' LT.	HANDHOLE, PORTLAND CEMENT CONCRETE

POST AND MAST ARM DATA				
NO.	STATION	OFFSET	DESCRIPTION	FOUNDATION
P1	1001+97.0	36.5' RT.	STEEL COMBINATION MAST ARM ASSEMBLY AND POLE 38 FT.	E-30D-13.5'
P2	1001+89.5	46.0' LT.	PEDESTRIAN PUSH BUTTON POST, TYPE II	12D-2.5'

TRAFFIC SIGNAL LEGEND

- | | | | |
|-------|---|--|--|
| | UNDERGROUND CONDUIT, PVC (TRAFFIC) | | LUMINAIRE AND MAST ARM
(SEE ROADWAY LIGHTING PLANS) |
| ----- | UNDERGROUND CONDUIT, PVC (LIGHTING)
SEE ROADWAY LIGHTING PLANS | | LIGHT POLE
(SEE ROADWAY LIGHTING PLANS) |
| | STEEL COMBINATION MAST ARM ASSEMBLY
AND POLE | | JUNCTION BOX (SPECIAL)
(SEE ROADWAY LIGHTING PLANS) |
| | SIGNAL POST | | ROADWAY LIGHTING CONTROLLER CABINET |
| | SIGNAL HEAD | | SERVICE INSTALLATION, POWER POLE |
| | SIGNAL HEAD WITH BACKPLATE | | CONFIRMATION BEACON |
| | PEDESTRIAN SIGNAL HEAD | | EMERGENCY VEHICLE PREEMPTION DETECTOR |
| | PEDESTRIAN PUSH-BUTTON POST/BUTTON | | THERMAL VEHICLE DETECTOR |
| | CONTROLLER CABINET | | |
| | HANDHOLE, PORTLAND CEMENT CONCRETE | | |
| | TBR | | |
| | TO BE REMOVED | | |
| | | | LENGTH - TYPE (S=STEEL P=PVC F=FIBER DUCT)
SIZE |

FILE NAME =
Z:\Plans\sheets\Project1\P1-sht-signal01.dgn

PLOT DATE =
8/25/2016 1:43:22 PM

DESIGNED - JGK
DRAWN - RLA
CHECKED - KNB
DATE - 8/26/2016

REVISED -
REVISED -
REVISED -
REVISED -

STATE OF ILLINOIS
DEPARTMENT OF TRANSPORTATION

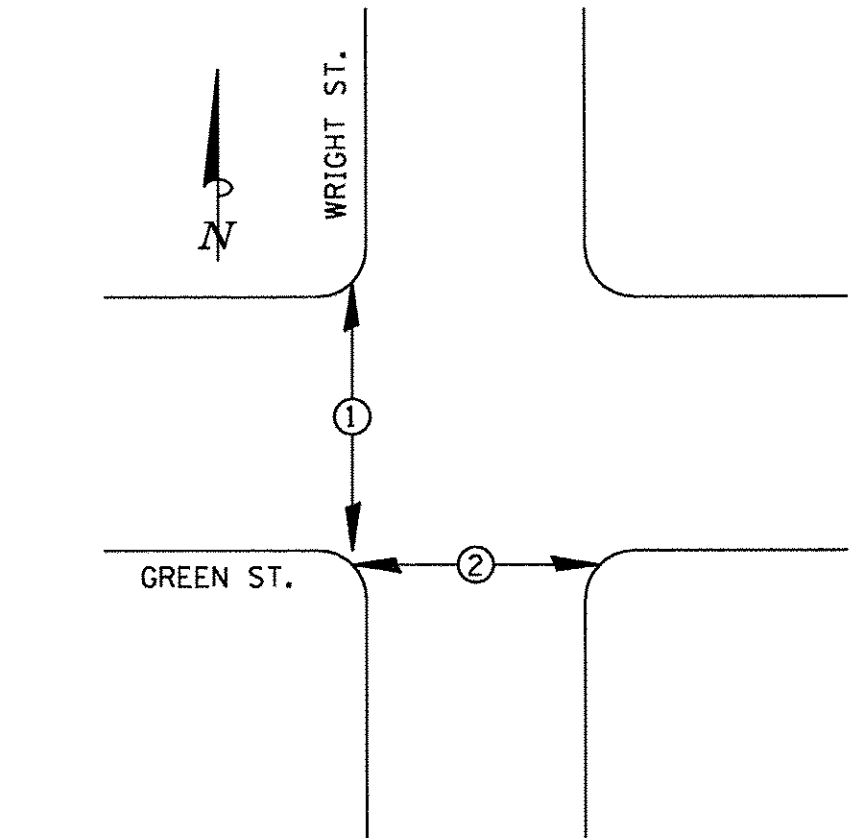
PROJECT 1 - GREEN STREET & WRIGHT STREET
SIGNAL PLAN

SCALE: 1"=10' SHEET NO. OF SHEETS STA. TO STA.

F.A.U. RTE.	SECTION	COUNTY	TOTAL SHEETS	SHEET NO.
7126	15-00304-01-PV	CHAMPAIGN	236	138
MCORE PROJECT 1		CONTRACT NO. 91539		
JOB NO. C-95-305-16	ILLINOIS	FED. AID PROJECT TIG-5181(057)		

BILL OF MATERIALS

S.P.	PAY ITEM	DESCRIPTION	UNIT	QUANTITY
	72000100	SIGN PANEL - TYPE 1	SQ. FT.	5
	81028350	UNDERGROUND CONDUIT, PVC, 2" DIA.	FOOT	16
	81028390	UNDERGROUND CONDUIT, PVC, 4" DIA.	FOOT	140
	81400700	HANDHOLE, PORTLAND CEMENT CONCRETE	EACH	2
	81702110	ELECTRIC CABLE IN CONDUIT, 600V (XLP-TYPE USE) 1/C NO. 10	FOOT	269
	87301215	ELECTRIC CABLE IN CONDUIT, SIGNAL NO. 14 2C	FOOT	347
	87301225	ELECTRIC CABLE IN CONDUIT, SIGNAL NO. 14 3C	FOOT	448
	87301245	ELECTRIC CABLE IN CONDUIT, SIGNAL NO. 14 5C	FOOT	499
	87301255	ELECTRIC CABLE IN CONDUIT, SIGNAL NO. 14 7C	FOOT	499
	87301705	ELECTRIC CABLE IN CONDUIT, COMMUNICATION NO. 18 3 PAIR	FOOT	269
	87301900	ELECTRIC CABLE IN CONDUIT, EQUIPMENT GROUNDING CONDUCTOR, NO. 6 1C	FOOT	224
	87600200	PEDESTRIAN PUSH-BUTTON POST, TYPE II	EACH	1
	87702920	STEEL COMBINATION MAST ARM ASSEMBLY AND POLE 38 FT.	EACH	1
*	87800400	CONCRETE FOUNDATION, TYPE E 30-INCH DIAMETER	FOOT	14
	88040070	SIGNAL HEAD, POLYCARBONATE, LED, 1-FACE, 3-SECTION, BRACKET MOUNTED	EACH	1
	88040090	SIGNAL HEAD, POLYCARBONATE, LED, 1-FACE, 3-SECTION, MAST ARM MOUNTED	EACH	1
	88040150	SIGNAL HEAD, POLYCARBONATE, LED, 1-FACE, 5-SECTION, BRACKET MOUNTED	EACH	1
	88040160	SIGNAL HEAD, POLYCARBONATE, LED, 1-FACE, 5-SECTION, MAST ARM MOUNTED	EACH	1
	88102825	PEDESTRIAN SIGNAL HEAD, POLYCARBONATE, LED, 1-FACE, BRACKET MOUNTED WITH COUNT DOWN TIMER	EACH	2
	88200100	TRAFFIC SIGNAL BACKPLATE	EACH	4
	88700090	CONFIRMATION BEACON	EACH	1
	88700200	LIGHT DETECTOR	EACH	1
	88700300	LIGHT DETECTOR AMPLIFIER	EACH	1
	89500300	RELOCATE EXISTING ILLUMINATED SIGN	EACH	1
*	89502375	REMOVE EXISTING TRAFFIC SIGNAL EQUIPMENT	EACH	1
*	X8211285	LUMINAIRE, LED, HORIZONTAL MOUNT, 285 WATT	EACH	1
*	X8800101	PEDESTRIAN PUSH-BUTTON, SPECIAL	EACH	2



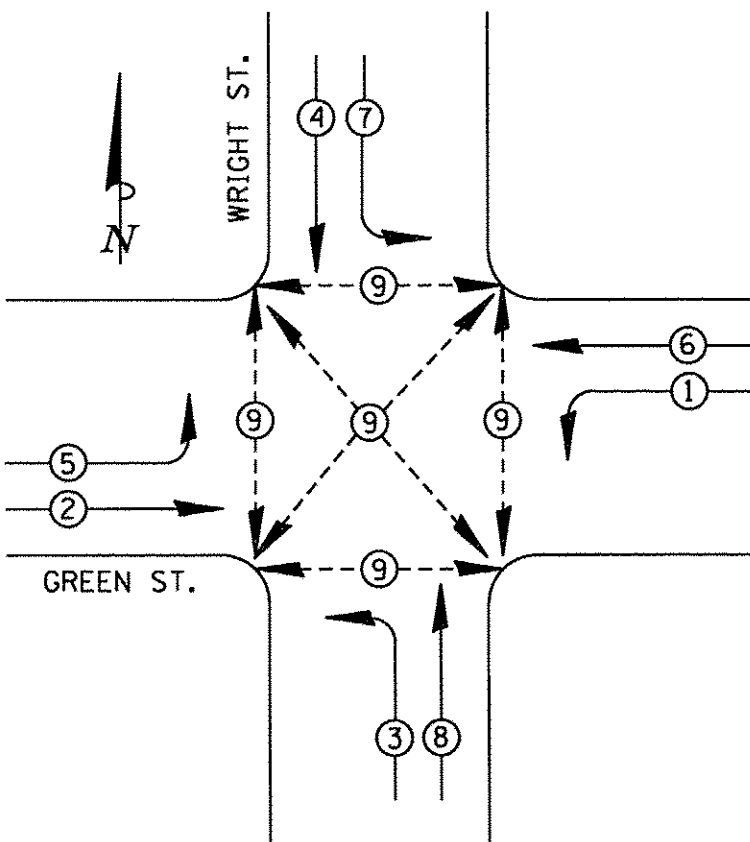
EMERGENCY VEHICLE PREEMPTION

PROPOSED PRIORITY UNITS

PRIORITY LANE INTERVAL	1	2
MOVEMENT	↑↓	→←

NOTES:

1. ONCE PREEMPTION HAS BEEN CALLED, TERMINATION OF A PHASE(S) SHALL BE IDENTICAL TO NORMAL SEQUENCE OF OPERATION'S TERMINATION OF A PHASE(S) AS DESCRIBED IN STANDARD 857001.
2. ALL RED CLEARANCE INTERVALS MUST BE DISPLAYED AFTER THE YELLOW CLEARANCE INTERVAL WHEN ENTERING OR LEAVING THE PREEMPTION SEQUENCE.



PHASE DESIGNATION DIAGRAM

PHASE DESIGNATION DIAGRAM LEGEND

- ⊙ DUAL ENTRY PHASE
- ⊙ PEDESTRIAN PHASE
- * NUMBER REFERS TO ASSOCIATED PHASE

NOTES:

1. THE VEHICLE SIGNAL PHASES WILL OPERATE PRE-TIMED AFTER CONSTRUCT DUE TO OVERAL PROJECT STAGING. THE PEDESTRIAN PHASE SHALL BE PEDESTRIAN ACTIVATED.

WRIGHT STREET

EXISTING HANDHOLE TO REMAIN

UIP
2 x 7C
2 x 5C
1 x 3C
2 x 2C
1 x L
1 x 1C#6 GRND.

EXISTING HANDHOLE TO REMAIN

CABLE DIAGRAM

CABLE DIAGRAM LEGEND

- CONDUIT SIZE
- NUMBER OF CABLES IN CONDUIT
- NUMBER OF CONDUCTORS IN EACH CABLE
- CONTROLLER CABINET
- HANDHOLE
- MAST ARM POLE, SIGNAL POST, OR PB POST
- PEDESTRIAN PUSH-BUTTON
- SIGNAL FACE
- SIGNAL FACE AND BACKPLATE
- BICYCLE SIGNAL FACE AND BACKPLATE
- PEDESTRIAN SIGNAL FACE
- ELECTRIC CABLE IN CONDUIT
- DENOTES NUMBER OF CONDUCTORS ALL CABLE NO. 14 EXCEPT AS INDICATED
- ROADWAY LIGHTING CABLE 3-1c#10
- LUMINAIRE (SEE ROADWAY LIGHTING PLANS)
- VIDEO COAX AND POWER CABLE
- EMERGENCY VEHICLE PREEMPTION DETECTOR
- CONFIRMATION BEACON
- THERMAL VEHICLE DETECTOR

TRAFFIC SIGNAL PLANS - GREEN ST. & WRIGHT ST.

CABLE DIAGRAM / PHASE DESIGNATION DIAGRAM /
TRAFFIC SIGNAL GENERAL NOTES / BILL OF MATERIALS

SCALE : NONE

FILE NAME =
Z:\Plans\Sheets\Project1\P1-sht-cable01.dgn

PLOT DATE =
8/25/2016 1:43:24 PM

DESIGNED - JGK
DRAWN - RLA
CHECKED - KNB
DATE - 8/26/2016

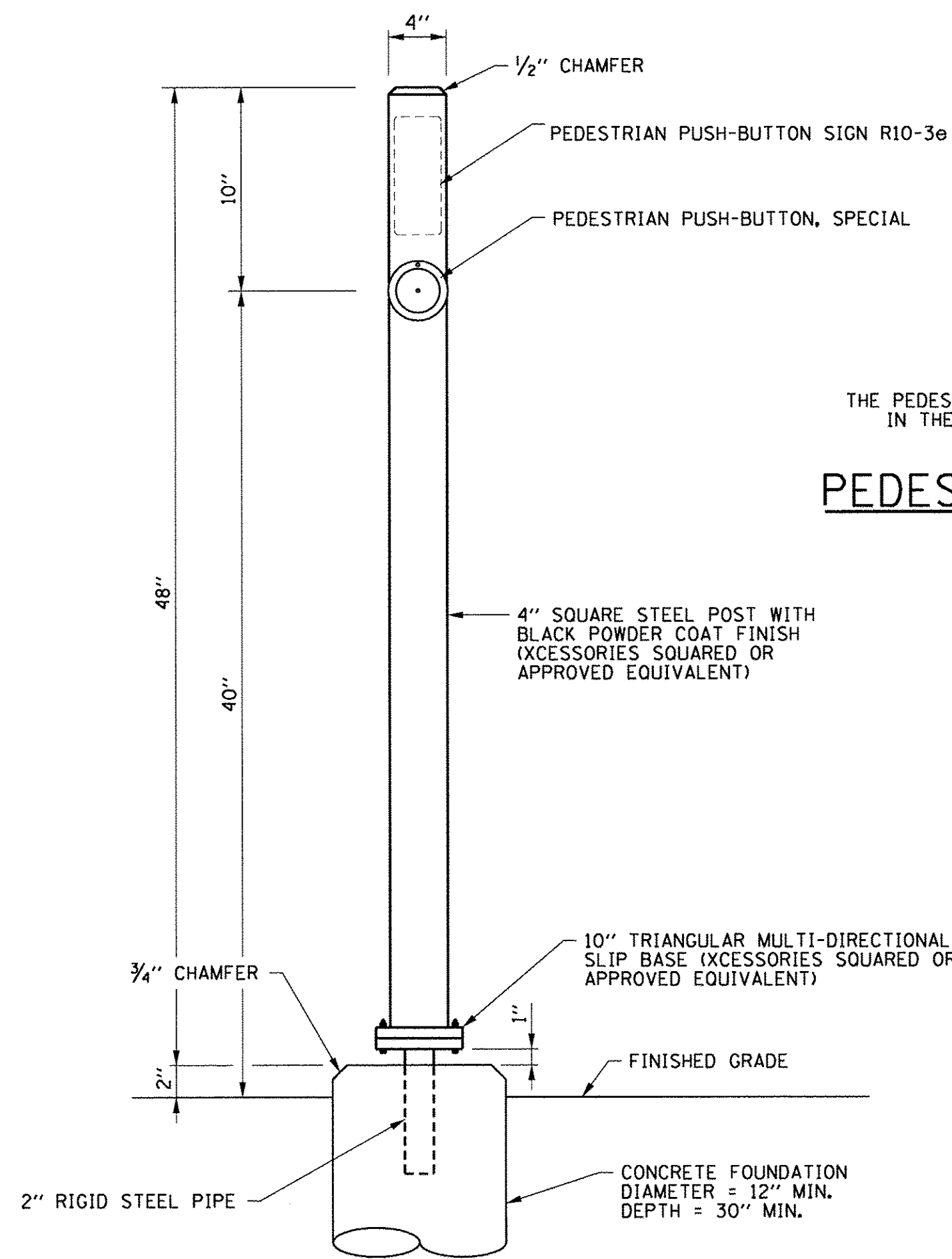
REVISED -
REVISED -
REVISED -
REVISED -

STATE OF ILLINOIS
DEPARTMENT OF TRANSPORTATION

PROJECT 1 - GREEN STREET & WRIGHT STREET
CABLE PLAN

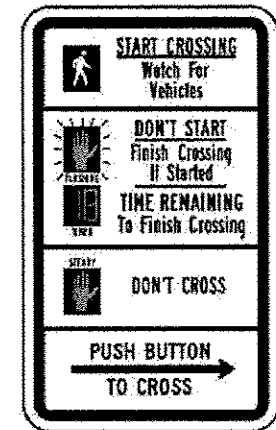
SCALE: 1"=10' SHEET NO. OF SHEETS STA. TO STA.

F.A.U. RTE.	SECTION	COUNTY	TOTAL SHEETS	SHEET NO.
7126	15-00304-01-PV	CHAMPAIGN	236	139
MCORE PROJECT 1		CONTRACT NO. 91539		
JOB NO. C-95-305-16		ILLINOIS FED. AID PROJECT TIG-5181057		



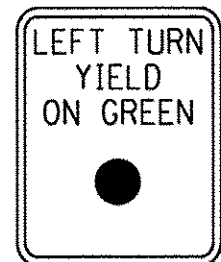
THE PEDESTRIAN PUSH-BUTTON SIGN SHALL BE INCLUDED
IN THE COST OF THE PEDESTRIAN PUSH BUTTON.

PEDESTRIAN PUSH-BUTTON SIGN DETAIL



R10-3e
9" x 15"

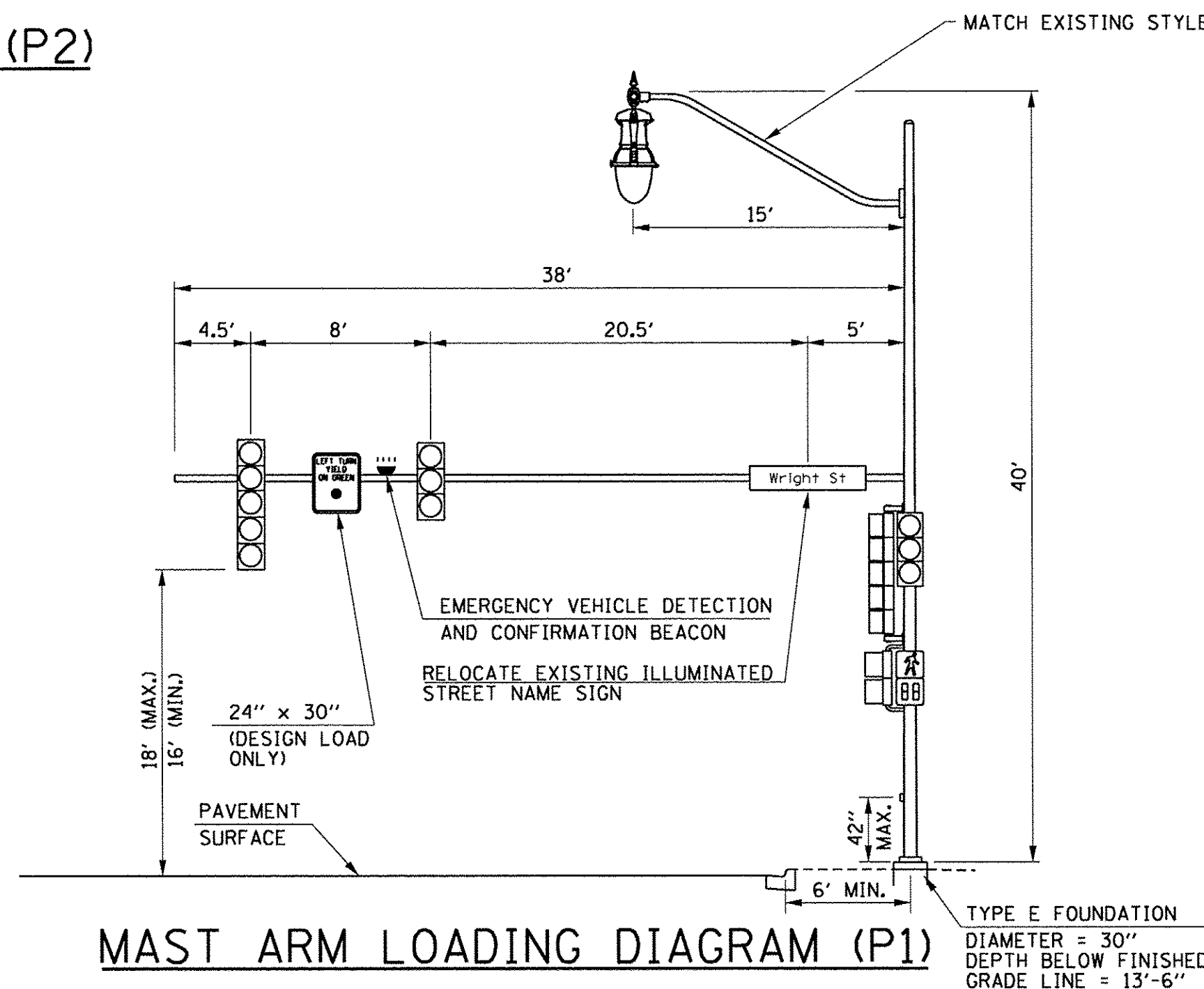
PEDESTRIAN PUSH-BUTTON POST DETAIL (P2)



R 10-12
24"x30"

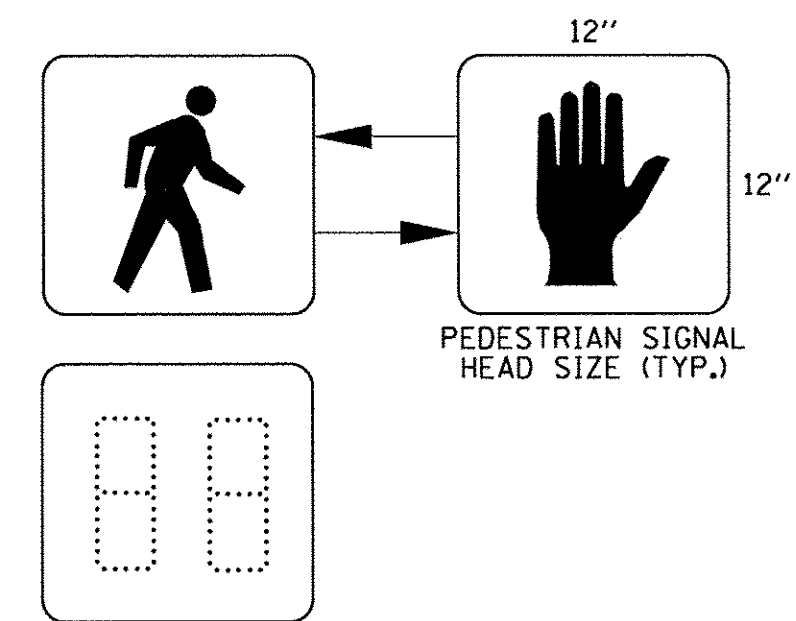
SIGN PANEL TYPE I

0.8" BORDER
1 REQUIRED OF R10-12 = 5.0 SQ. FT.
ONLY HIGH INTENSITY SHEETING
SHALL BE USED



MAST ARM LOADING DIAGRAM (P1)

GREEN STREET AND WRIGHT STREET
SOUTHEAST QUADRANT (LOOKING EAST)

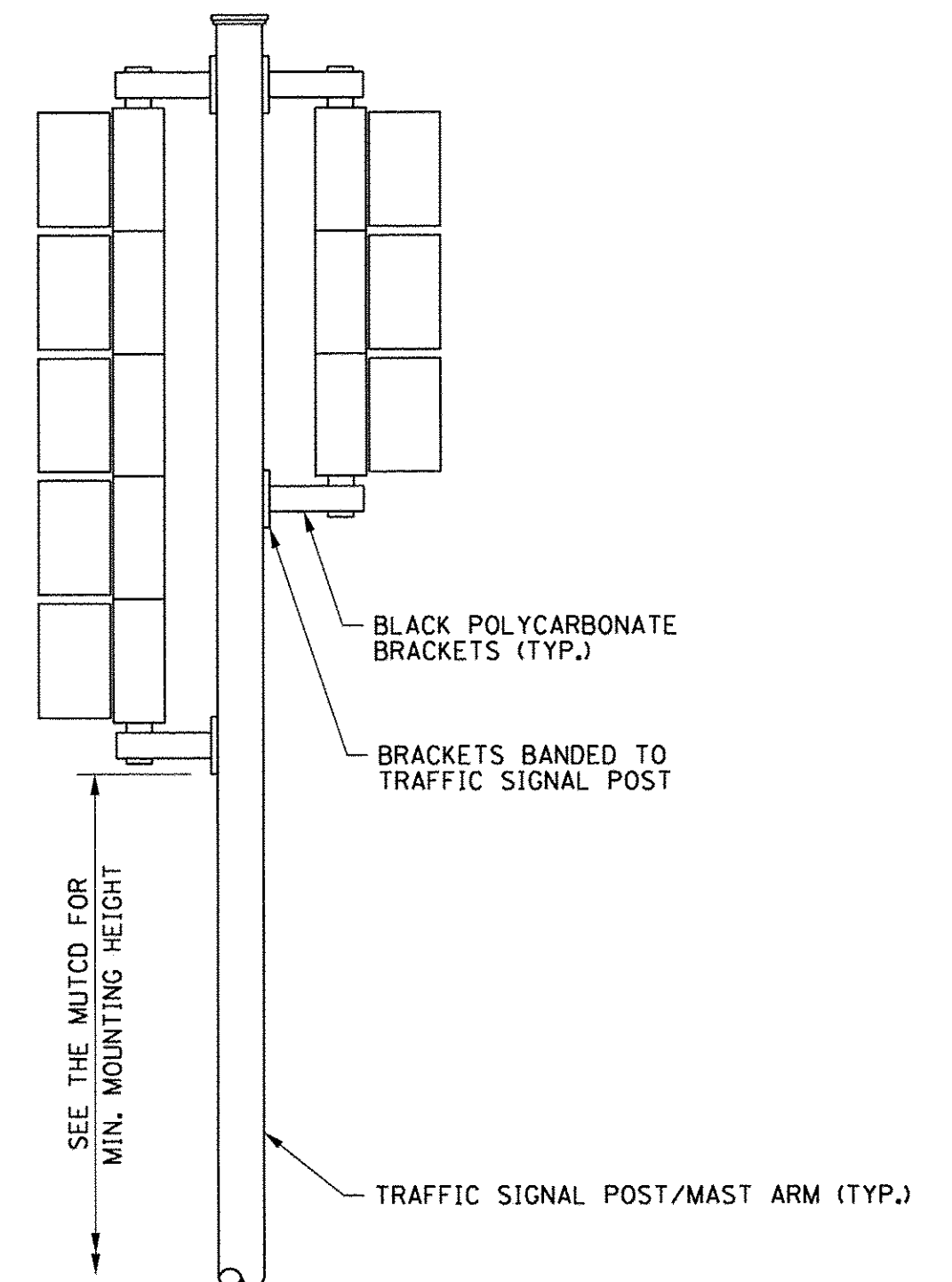


PEDESTRIAN COUNTDOWN SIGNAL DISPLAY DETAIL

NO SCALE

NOTES:

1. REFER TO THE TECHNICAL SPECIFICATIONS FOR INFORMATION ON THE COAXIAL CABLE AND FACTORY-MADE PIGTAIL CABLE.
2. FIELD-ASSEMBLED POWER CABLES WILL NOT BE ACCEPTED.
3. THE PIGTAIL AND POWER CABLES SHALL BE SPLICED AT THE MAST ARM POLE HANDHOLE.
4. THE COAXIAL CABLE SHALL BE A CONTINUOUS UNBROKEN RUN FROM THE VIDEO CAMERA TO THE VIDEO DETECTION PROCESSOR. SPLICES SHALL NOT BE ALLOWED.
5. DO NOT TWIST CABLES.



TRAFFIC SIGNAL MOUNTING DETAILS

ONE 3-SECTION SIGNAL HEAD AND ONE 5-SECTION SIGNAL HEAD
BRACKET MOUNTED WITH BOTTOM SECTIONS AT COMMON ELEVATION

LAYOUT	JCK	11/24/15
DRAWN	RLA	2/4/16
REVIEWED	KNB	3/22/16

FILE NAME =
Z:\Plans\Sheets\Project1\P1-sht-MastArm01.dgn
PLOT DATE =
8/25/2016 1:43:28 PM

DESIGNED - JCK
DRAWN - RLA
CHECKED - KNB
DATE - 8/26/2016

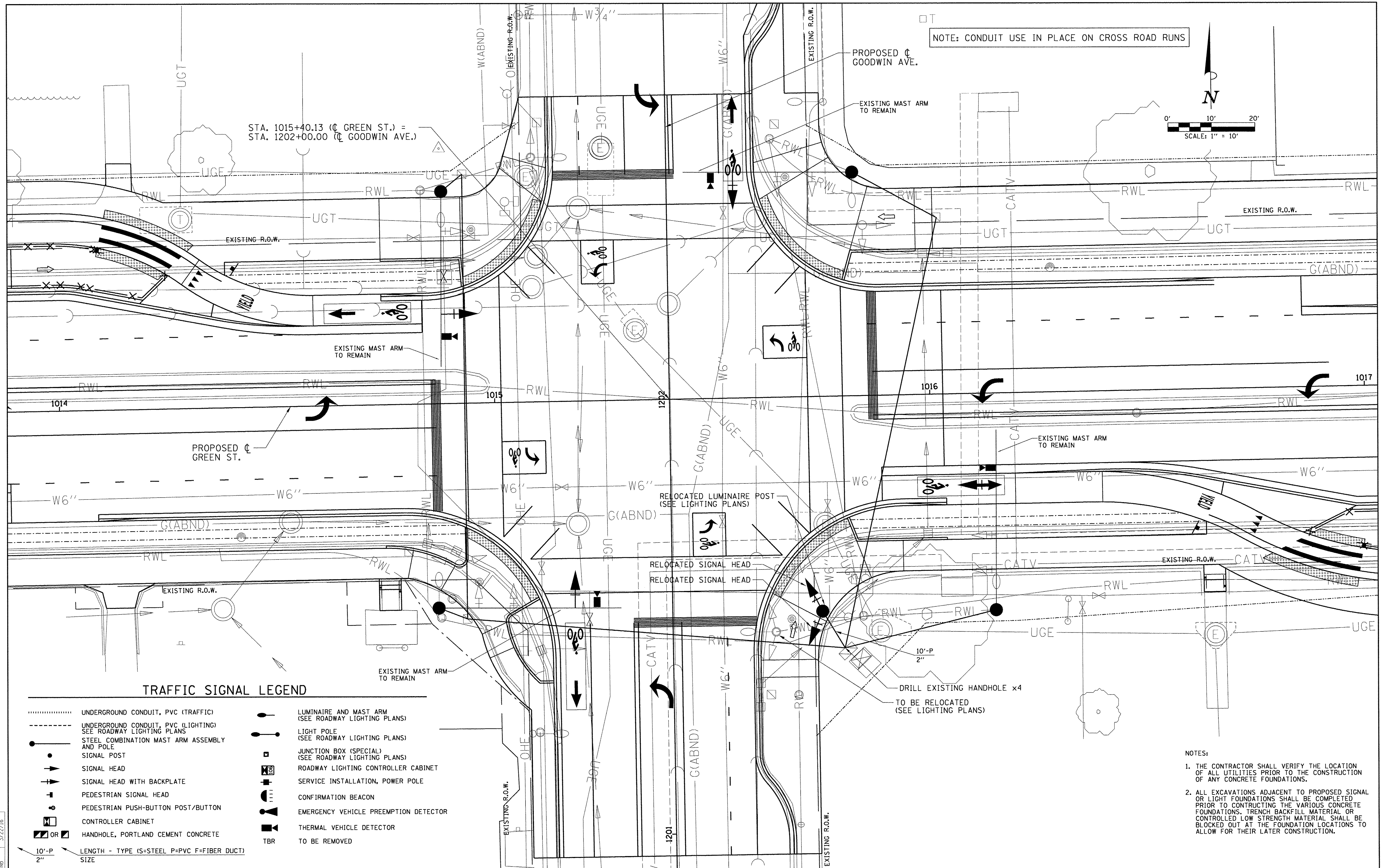
REVISED -
REVISED -
REVISED -
REVISED -

STATE OF ILLINOIS
DEPARTMENT OF TRANSPORTATION

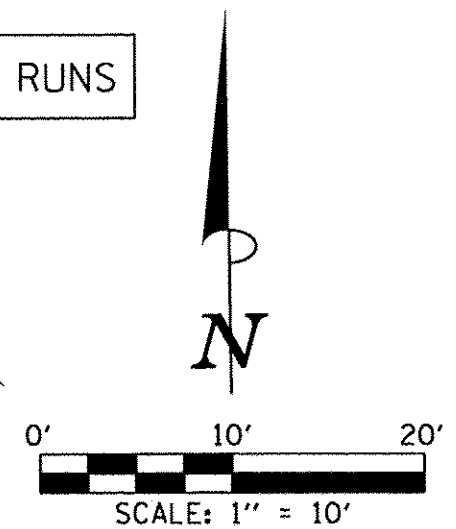
PROJECT 1 - GREEN STREET & WRIGHT STREET
MAST ARM LOADING DIAGRAM

SCALE: N/A SHEET NO. OF SHEETS STA. TO STA.

F.A.U. RTE.	SECTION	COUNTY	TOTAL SHEETS	SHEET NO.
7126	15-00304-01-PV	CHAMPAIGN	236	140
MCORE PROJECT 1		CONTRACT NO. 91539		
JOB NO. C-95-305-16 ILLINOIS FED. AID PROJECT TIG-5181(057)				



NOTE: CONDUIT USE IN PLACE ON CROSS ROAD RUNS



- NOTES:
1. THE CONTRACTOR SHALL VERIFY THE LOCATION OF ALL UTILITIES PRIOR TO THE CONSTRUCTION OF ANY CONCRETE FOUNDATIONS.
 2. ALL EXCAVATIONS ADJACENT TO PROPOSED SIGNAL OR LIGHT FOUNDATIONS SHALL BE COMPLETED PRIOR TO CONSTRUCTING THE VARIOUS CONCRETE FOUNDATIONS. TRENCH BACKFILL MATERIAL OR CONTROLLED LOW STRENGTH MATERIAL SHALL BE BLOCKED OUT AT THE FOUNDATION LOCATIONS TO ALLOW FOR THEIR LATER CONSTRUCTION.

LAYOUT	JCK	11/24/15
DRAWN	RLA	2/4/16
REVIEWED	KNB	3/22/16

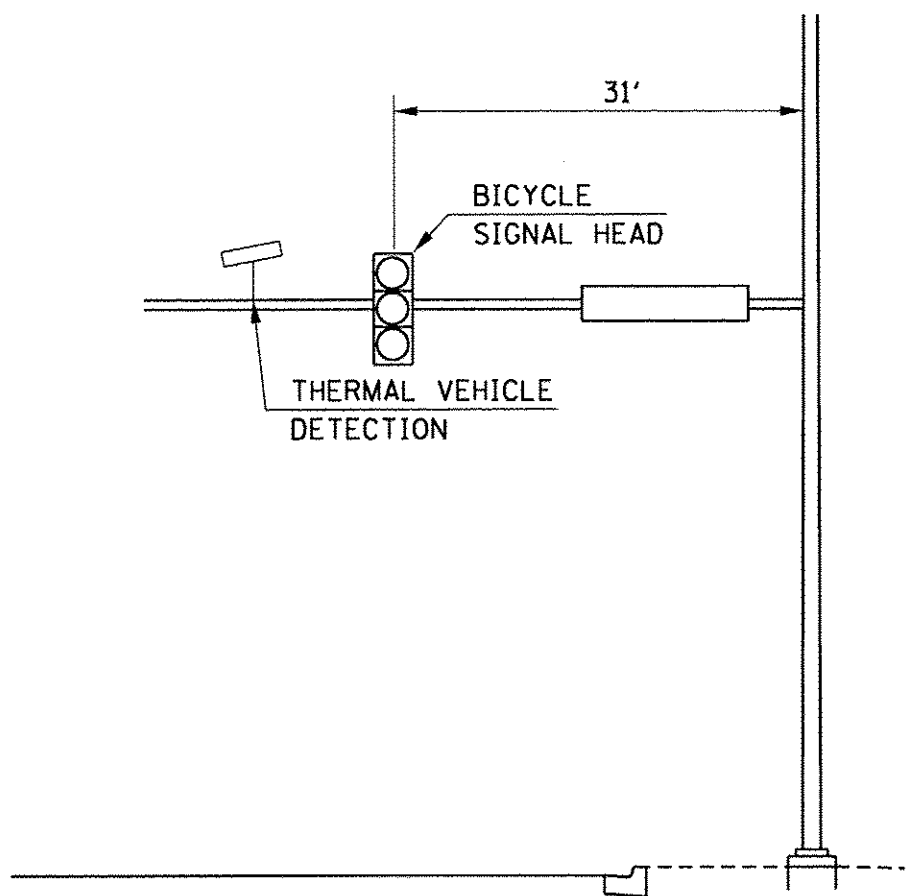
FILE NAME =
Z:\Plans\Sheets\Project1\P1-sht-signal02.dgn
PLOT DATE =
8/25/2016 1:44:24 PM

DESIGNED -	JCK	REVISED -	
DRAWN -	RLA	REVISED -	
CHECKED -	KNB	REVISED -	
DATE -	8/26/2016	REVISED -	

STATE OF ILLINOIS
DEPARTMENT OF TRANSPORTATION

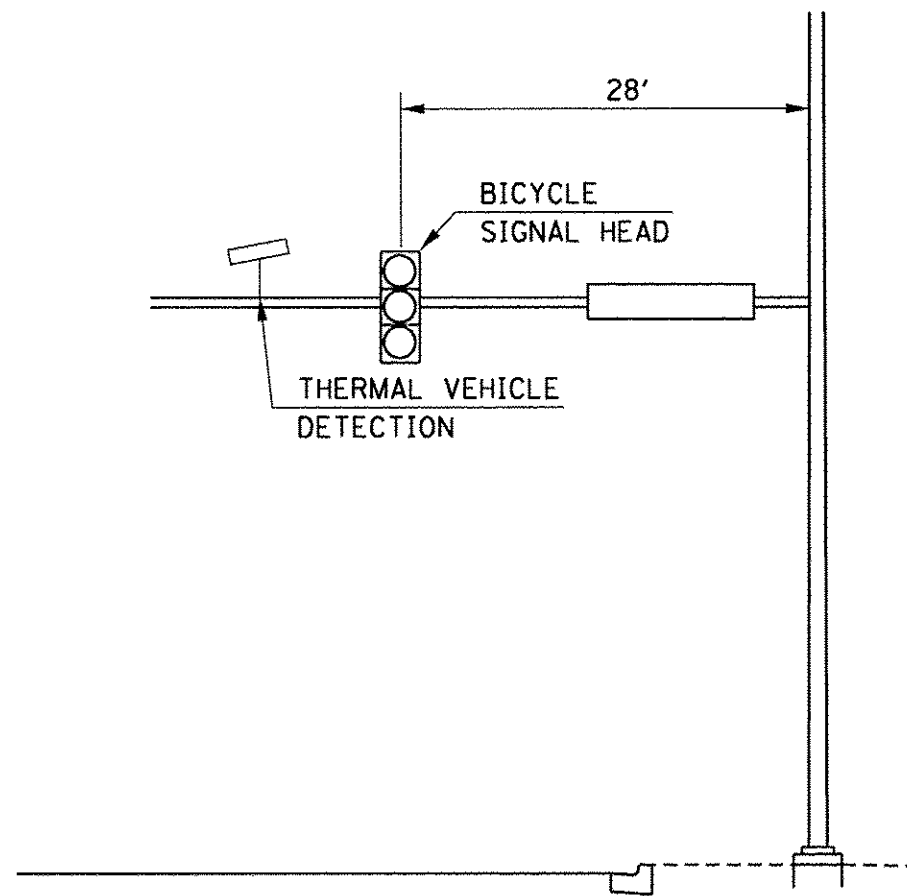
PROJECT 1 - GREEN STREET & GOODWIN AVENUE
SIGNAL PLAN
SCALE: 1"=10' SHEET NO. OF SHEETS STA. TO STA.

F.A.U. RTE.	SECTION	COUNTY	TOTAL SHEETS	SHEET NO.
7126	15-00304-01-PV	CHAMPAIGN	236	141
MCORE PROJECT 1		CONTRACT NO. 91539		
JOB NO. C-95-305-16 ILLINOIS FED. AID PROJECT TIG-5181(057)				



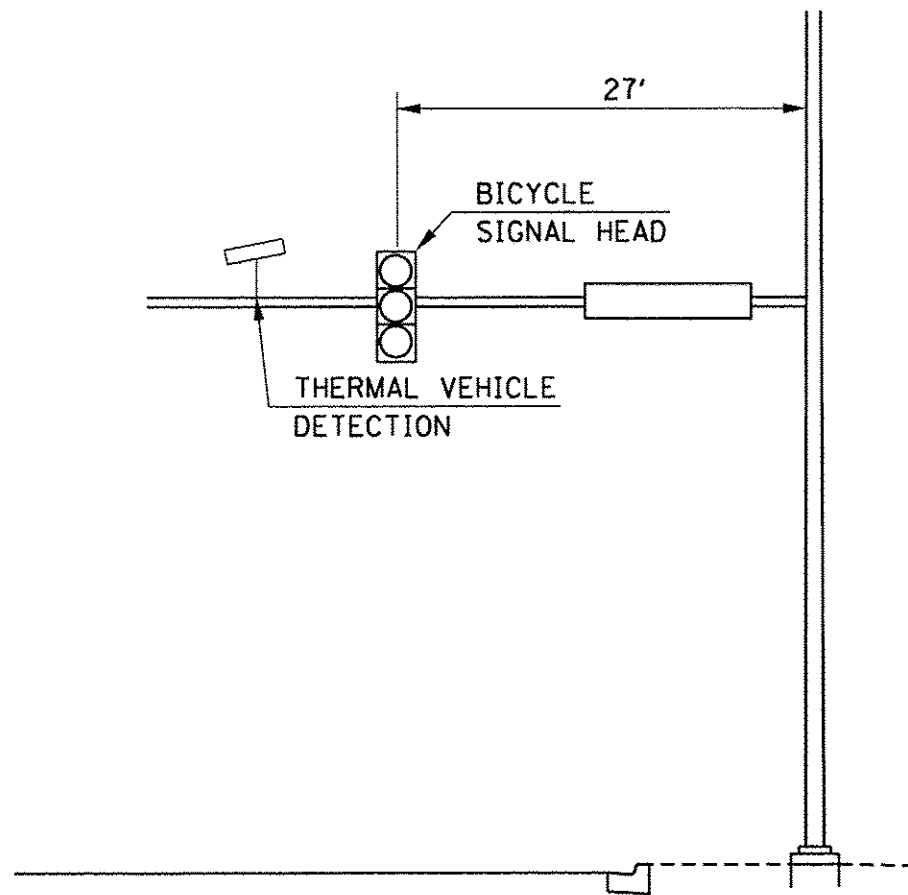
MAST ARM LOADING DIAGRAM

GREEN STREET AND GOODWIN AVENUE
NORTHEAST QUADRANT (LOOKING NORTH)



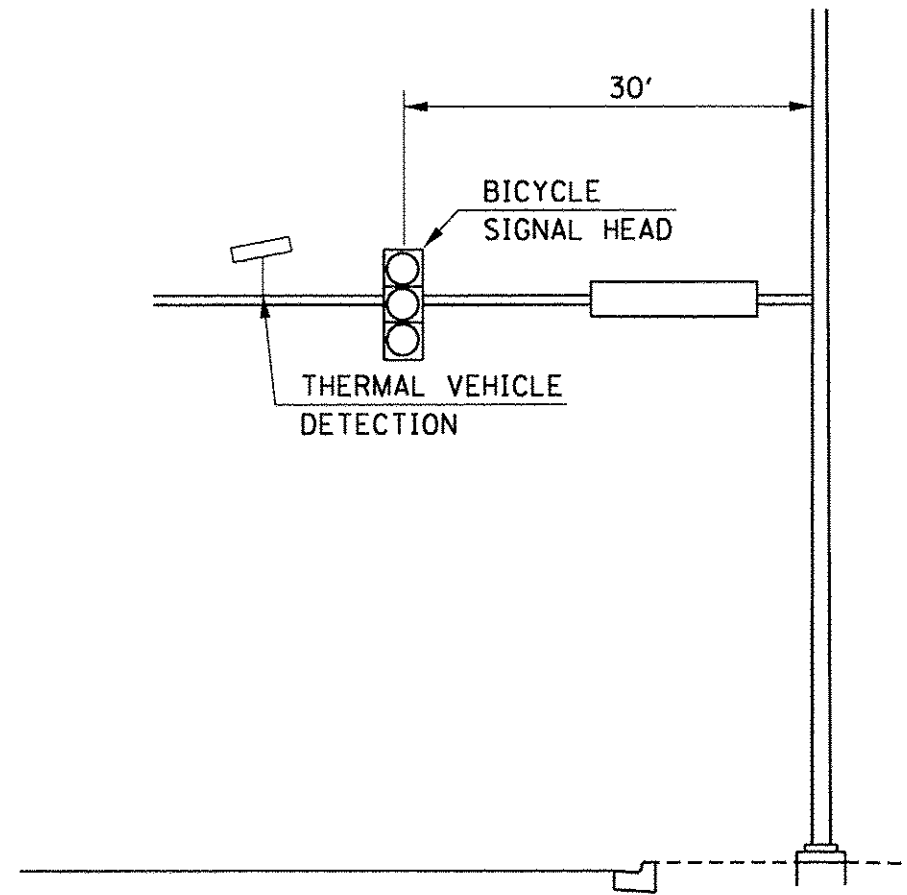
MAST ARM LOADING DIAGRAM

GREEN STREET AND GOODWIN AVENUE
SOUTHEAST QUADRANT (LOOKING EAST)



MAST ARM LOADING DIAGRAM

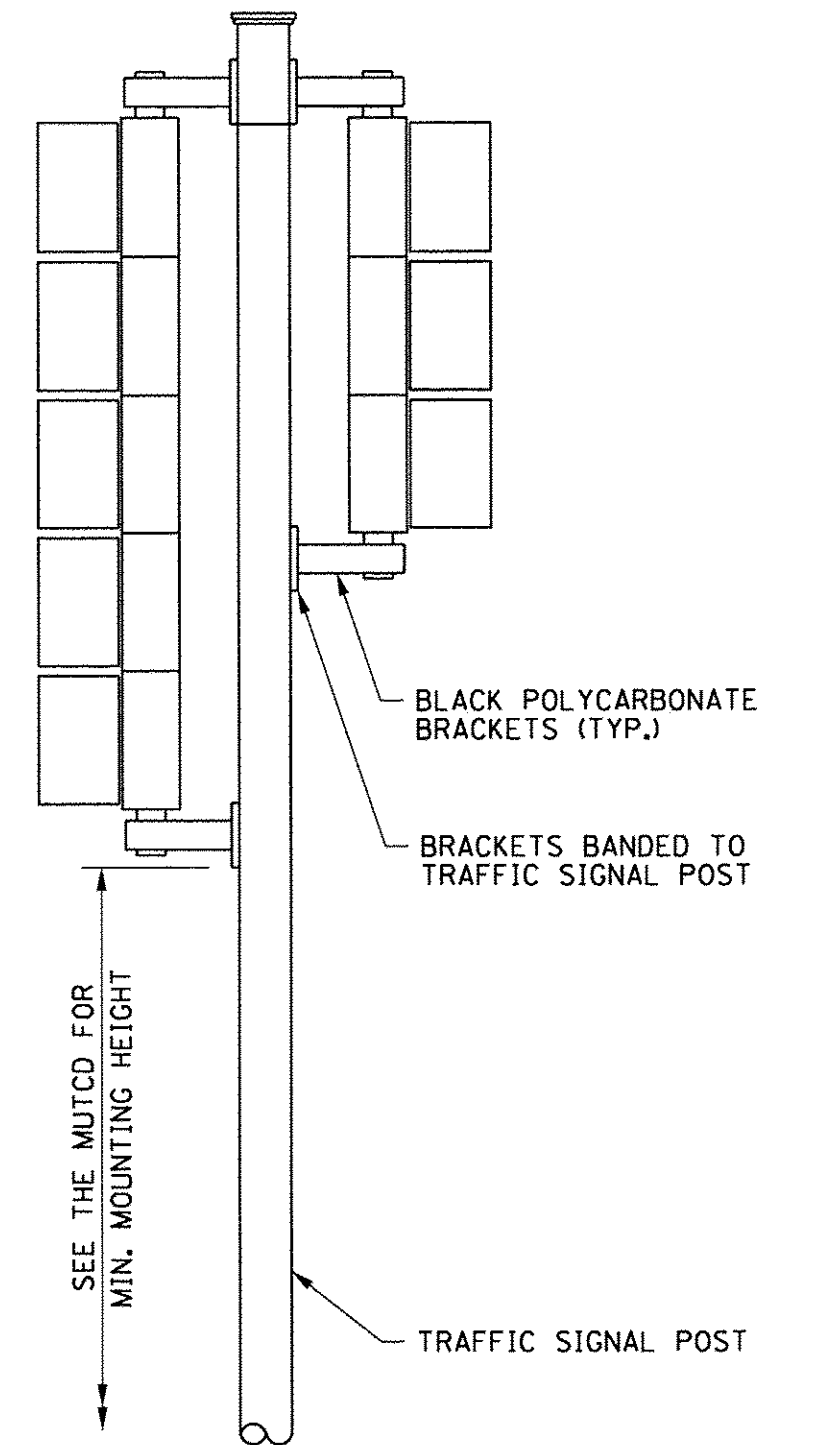
GREEN STREET AND LINCOLN AVENUE
SOUTHWEST QUADRANT (LOOKING SOUTH)



MAST ARM LOADING DIAGRAM

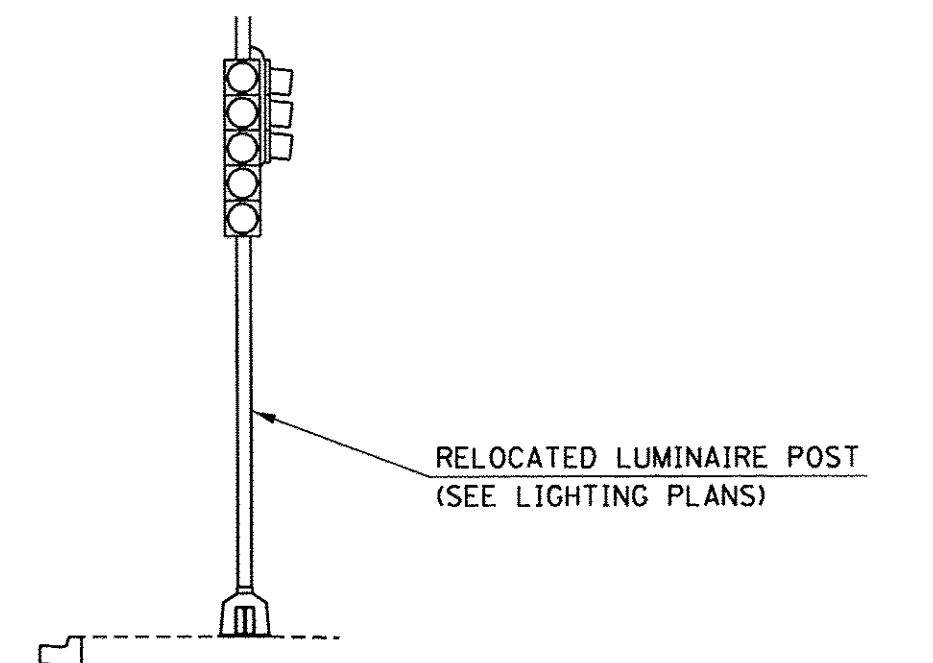
GREEN STREET AND LINCOLN AVENUE
NORTHWEST QUADRANT (LOOKING WEST)

- NOTES:
1. REFER TO THE TECHNICAL SPECIFICATIONS FOR INFORMATION ON THE COAXIAL CABLE AND FACTORY-MADE PIGTAIL CABLE.
 2. FIELD-ASSEMBLED POWER CABLES WILL NOT BE ACCEPTED.
 3. THE PIGTAIL AND POWER CABLES SHALL BE SPLICED AT THE MAST ARM POLE HANDHOLE.
 4. THE COAXIAL CABLE SHALL BE A CONTINUOUS UNBROKEN RUN FROM THE VIDEO CAMERA TO THE VIDEO DETECTION PROCESSOR. SPLICES SHALL NOT BE ALLOWED.
 5. DO NOT TWIST CABLES.
 6. ALL EXISTING MAST ARM MOUNTED SIGNAL HEAD LOCATIONS SHALL BE ADJUSTED ON THE ARM TO BE CONSISTENT WITH CONFIGURATIONS SHOWN IN THE PLANS FOR THE LINCOLN AVENUE AND GREEN STREET INTERSECTION. ALL LABOR, EQUIPMENT, AND MATERIALS TO RELOCATE THE SIGNAL HEADS, IF NECESSARY, SHALL BE INCLUDED IN THE COST OF PROPOSED MAST ARM MOUNTED SIGNAL HEADS ALREADY INCLUDED IN THE CONTRACT.



TRAFFIC SIGNAL MOUNTING DETAILS

ONE 3-SECTION SIGNAL HEAD AND ONE 5-SECTION SIGNAL HEAD
BRACKET MOUNTED WITH BOTTOM SECTIONS AT COMMON ELEVATION



POST-MOUNTED SIGNAL LOADING DIAGRAM

GREEN STREET AND GOODWIN AVENUE
SOUTHEAST QUADRANT

LAYOUT	JCK	11/24/15
DRAWN	RLA	2/4/16
REVIEWED	KNB	3/22/16

FILE NAME =	DESIGNED - JCK
Z:\Plans\Sheets\Project1\P1-sht-MastArm02.dgn	DRAWN - RLA
PLOT DATE =	CHECKED - KNB
8/25/2016 1:44:31 PM	DATE - 8/26/2016

DESIGNED - JCK	REVISED -
DRAWN - RLA	REVISED -
CHECKED - KNB	REVISED -
DATE - 8/26/2016	REVISED -

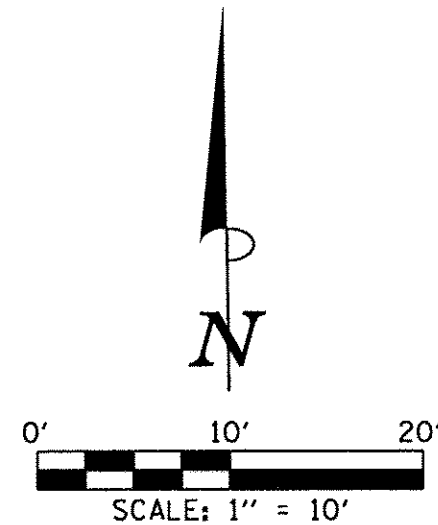
STATE OF ILLINOIS DEPARTMENT OF TRANSPORTATION

PROJECT 1 - GREEN STREET & GOODWIN AVENUE MAST ARM LOADING DIAGRAM
SCALE: N/A

F.A.U. RTE. 7126	SECTION 15-00304-01-PV	COUNTY CHAMPAIGN	TOTAL SHEETS 236	SHEET NO. 143
MCORE PROJECT 1		CONTRACT NO. 91539		
JOB NO. C-95-305-16 ILLINOIS FED. AID PROJECT TIG-5181(057)				

NOTES:

1. THE CONTRACTOR SHALL VERIFY THE LOCATION OF ALL UTILITIES PRIOR TO THE CONSTRUCTION OF ANY CONCRETE FOUNDATIONS.
2. ALL EXCAVATIONS ADJACENT TO PROPOSED SIGNAL OR LIGHT FOUNDATIONS SHALL BE COMPLETED PRIOR TO CONSTRUCTING THE VARIOUS CONCRETE FOUNDATIONS. TRENCH BACKFILL MATERIAL OR CONTROLLED LOW STRENGTH MATERIAL SHALL BE BLOCKED OUT AT THE FOUNDATION LOCATIONS TO ALLOW FOR THEIR LATER CONSTRUCTION.



STA. 1028+35.41 (C GREEN ST.) =
STA. 1302+00.00 (C LINCOLN AVE.)

PROPOSED C
GREEN ST.

PROPOSED C
LINCOLN AVE.

TRAFFIC SIGNAL LEGEND

.....	UNDERGROUND CONDUIT, PVC (TRAFFIC)	●	LUMINAIRE AND MAST ARM (SEE ROADWAY LIGHTING PLANS)
-----	UNDERGROUND CONDUIT, PVC (LIGHTING) SEE ROADWAY LIGHTING PLANS	●	LIGHT POLE (SEE ROADWAY LIGHTING PLANS)
—●—	STEEL COMBINATION MAST ARM ASSEMBLY AND POLE	□	JUNCTION BOX (SPECIAL) (SEE ROADWAY LIGHTING PLANS)
●	SIGNAL POST	□	ROADWAY LIGHTING CONTROLLER CABINET
→	SIGNAL HEAD	+	SERVICE INSTALLATION, POWER POLE
→	SIGNAL HEAD WITH BACKPLATE	— —	CONFIRMATION BEACON
— —	PEDESTRIAN SIGNAL HEAD	— —	EMERGENCY VEHICLE PREEMPTION DETECTOR
⊗	PEDESTRIAN PUSH-BUTTON POST/BUTTON	■	THERMAL VEHICLE DETECTOR
□	CONTROLLER CABINET	10'-P 2"	LENGTH - TYPE (S=STEEL P=PVC F=FIBER DUCT) SIZE
□	HANDHOLE, PORTLAND CEMENT CONCRETE		
UPS	UNINTERRUPTIBLE POWER SUPPLY		

HANDHOLE DATA			
NO.	STATION	OFFSET	DESCRIPTION
H1	1028+79.4	39.3' LT.	HANDHOLE, PORTLAND CEMENT CONCRETE
H2	1028+81.2	44.2' RT.	HANDHOLE, PORTLAND CEMENT CONCRETE
H3	1027+93.1	47.1' RT.	HANDHOLE, PORTLAND CEMENT CONCRETE
H4	1027+91.5	48.5' LT.	HANDHOLE, PORTLAND CEMENT CONCRETE

POST AND MAST ARM DATA				
NO.	STATION	OFFSET	DESCRIPTION	FOUNDATION
P1	1028+73.0	49.0' LT.	STEEL COMBINATION MAST ARM ASSEMBLY AND POLE 38 FT.	E-30D-13.5'
P2	1028+86.5	35.2' LT.	TRAFFIC SIGNAL POST, ALUMINUM 14 FT.	A-24D-3'
P3	1028+86.8	39.5' RT.	STEEL COMBINATION MAST ARM ASSEMBLY AND POLE 40 FT.	E-36D-13'
P4	1028+77.0	48.4' RT.	TRAFFIC SIGNAL POST, ALUMINUM 14 FT.	A-24D-3'
P5	1027+96.8	51.2' RT.	STEEL COMBINATION MAST ARM ASSEMBLY AND POLE 40 FT.	E-36D-13'
P6	1027+82.8	41.0' RT.	TRAFFIC SIGNAL POST, ALUMINUM 14 FT.	A-24D-3'
P7	1027+85.5	42.0' LT.	STEEL COMBINATION MAST ARM ASSEMBLY AND POLE 46 FT.	E-36D-13'
P8	1027+96.6	53.3' LT.	TRAFFIC SIGNAL POST, ALUMINUM 14 FT.	A-24D-3'

FILE NAME =
Z:\Plans\Sheets\Project1\P1-sht-signal03.dgn

PLOT DATE =
8/25/2016 1:45:22 PM

DESIGNED - JGK
DRAWN - RLA
CHECKED - KNB
DATE - 8/26/2016

REVISED -
REVISED -
REVISED -
REVISED -

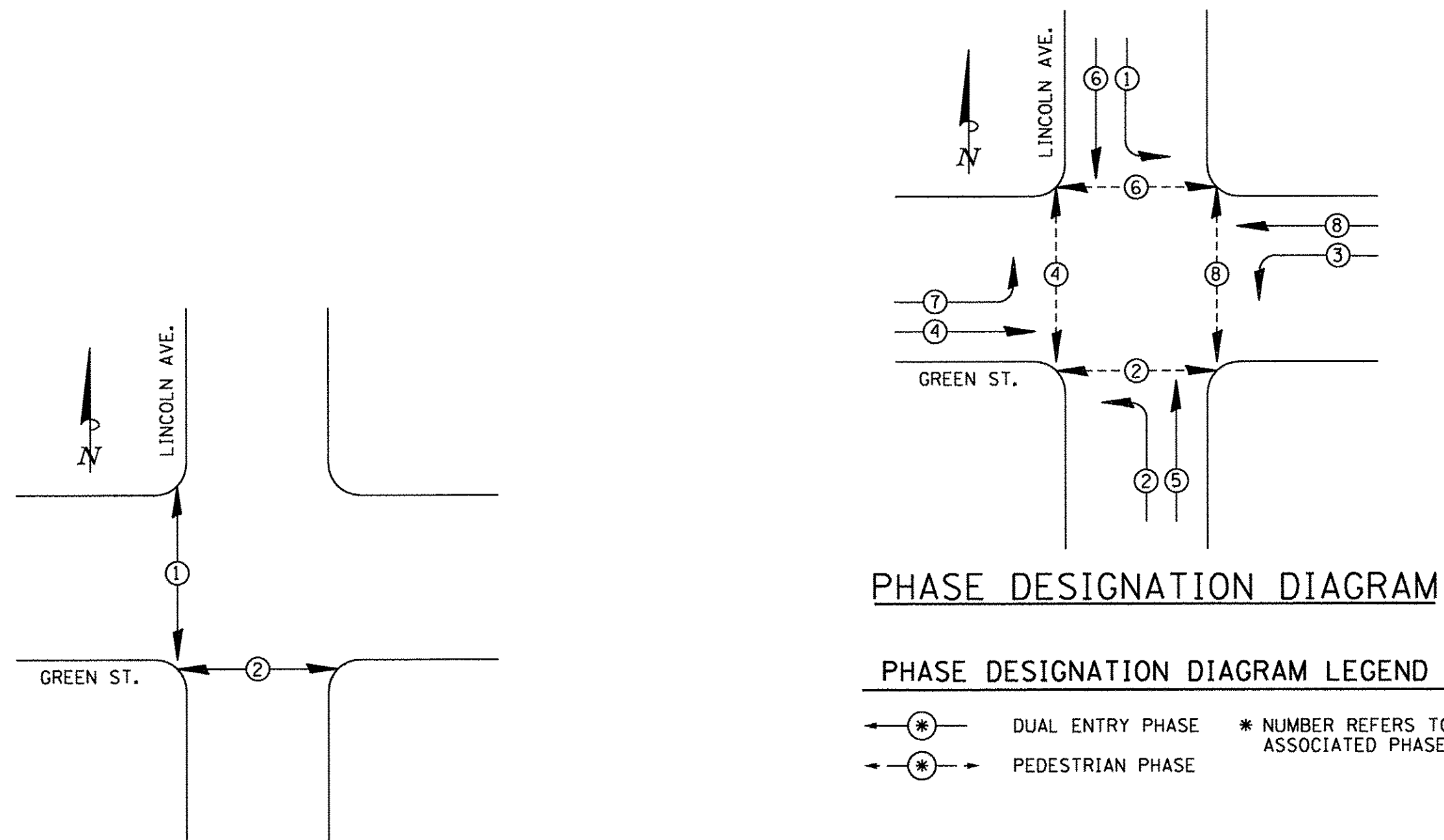
STATE OF ILLINOIS
DEPARTMENT OF TRANSPORTATION

PROJECT 1 - GREEN STREET & LINCOLN AVENUE
SIGNAL PLAN



SCALE: 1"=10' SHEET NO. OF SHEETS STA. TO STA.

F.A.U. RTE.	SECTION	COUNTY	TOTAL SHEETS	SHEE NO.
7126	15-00304-01-PV	CHAMPAIGN	236	144
MCORE PROJECT 1		CONTRACT NO. 91539		
JOB NO. C-95-305-16 ILLINOIS FED. AID PROJECT TIG-5181057				

S.P.	PAY ITEM	DESCRIPTION	UNIT	QUANTITY
	72000100	SIGN PANEL - TYPE 1	SQ FT	56
	72000200	SIGN PANEL - TYPE 2	SQ FT	35
	81028350	UNDERGROUND CONDUIT, PVC, 2" DIA.	FOOT	33
	81028370	UNDERGROUND CONDUIT, PVC, 3" DIA.	FOOT	33
	81028390	UNDERGROUND CONDUIT, PVC, 4" DIA.	FOOT	325
	81400700	HANDHOLE, PORTLAND CEMENT CONCRETE	EACH	4
	81702110	ELECTRIC CABLE IN CONDUIT, 600V (XLP-TYPE USE) 1/C NO. 10	FOOT	2556
*	85000200	MAINTENANCE OF EXISTING TRAFFIC SIGNAL INSTALLATION	EACH	1
	85700200	FULL-ACTUATED CONTROLLER AND TYPE IV CABINET	EACH	1
	86200200	UNINTERRUPTIBLE POWER SUPPLY, STANDARD	EACH	1
	87301215	ELECTRIC CABLE IN CONDUIT, SIGNAL NO. 14 2C	FOOT	2180
	87301225	ELECTRIC CABLE IN CONDUIT, SIGNAL NO. 14 3C	FOOT	1344
	87301245	ELECTRIC CABLE IN CONDUIT, SIGNAL NO. 14 5C	FOOT	2430
	87301255	ELECTRIC CABLE IN CONDUIT, SIGNAL NO. 14 7C	FOOT	1557
	87301705	ELECTRIC CABLE IN CONDUIT, COMMUNICATION NO. 18 3 PAIR	FOOT	844
	87301900	ELECTRIC CABLE IN CONDUIT, EQUIPMENT GROUNDING CONDUCTOR, NO. 6 1C	FOOT	568
	87502680	TRAFFIC SIGNAL POST, ALUMINUM 14 FT.	EACH	4
	87702920	STEEL COMBINATION MAST ARM ASSEMBLY AND POLE 38 FT.	EACH	1
	87702930	STEEL COMBINATION MAST ARM ASSEMBLY AND POLE 40 FT.	EACH	2
	87702960	STEEL COMBINATION MAST ARM ASSEMBLY AND POLE 46 FT.	EACH	1
*	87800100	CONCRETE FOUNDATION, TYPE A	FOOT	12
*	87800150	CONCRETE FOUNDATION, TYPE C	FOOT	3.5
*	87800400	CONCRETE FOUNDATION, TYPE E 30-INCH DIAMETER	FOOT	14
*	87800415	CONCRETE FOUNDATION, TYPE E 36-INCH DIAMETER	FOOT	39
	88040070	SIGNAL HEAD, POLYCARBONATE, LED, 1-FACE, 3-SECTION, BRACKET MOUNTED	EACH	4
	88040090	SIGNAL HEAD, POLYCARBONATE, LED, 1-FACE, 3-SECTION, MAST ARM MOUNTED	EACH	8
	88040150	SIGNAL HEAD, POLYCARBONATE, LED, 1-FACE, 5-SECTION, BRACKET MOUNTED	EACH	4
	88040160	SIGNAL HEAD, POLYCARBONATE, LED, 1-FACE, 5-SECTION, MAST ARM MOUNTED	EACH	4
	88102825	PEDESTRIAN SIGNAL HEAD, POLYCARBONATE, LED, 1-FACE, BRACKET MOUNTED WITH COUNT DOWN TIMER	EACH	8
	88200100	TRAFFIC SIGNAL BACKPLATE	EACH	20
	88700090	CONFIRMATION BEACON	EACH	4
	88700200	LIGHT DETECTOR	EACH	4
	88700300	LIGHT DETECTOR AMPLIFIER	EACH	4
*	89502375	REMOVE EXISTING TRAFFIC SIGNAL EQUIPMENT	EACH	1
*	X0327515	THERMAL VEHICLE DETECTION SYSTEM	EACH	1
*	X6211285	LUMINAIRE, LED, HORIZONTAL MOUNT, 285 WATT	EACH	4
*	X68001101	PEDESTRIAN PUSH-BUTTON, SPECIAL	EACH	8



PROPOSED PRIORITY UNITS

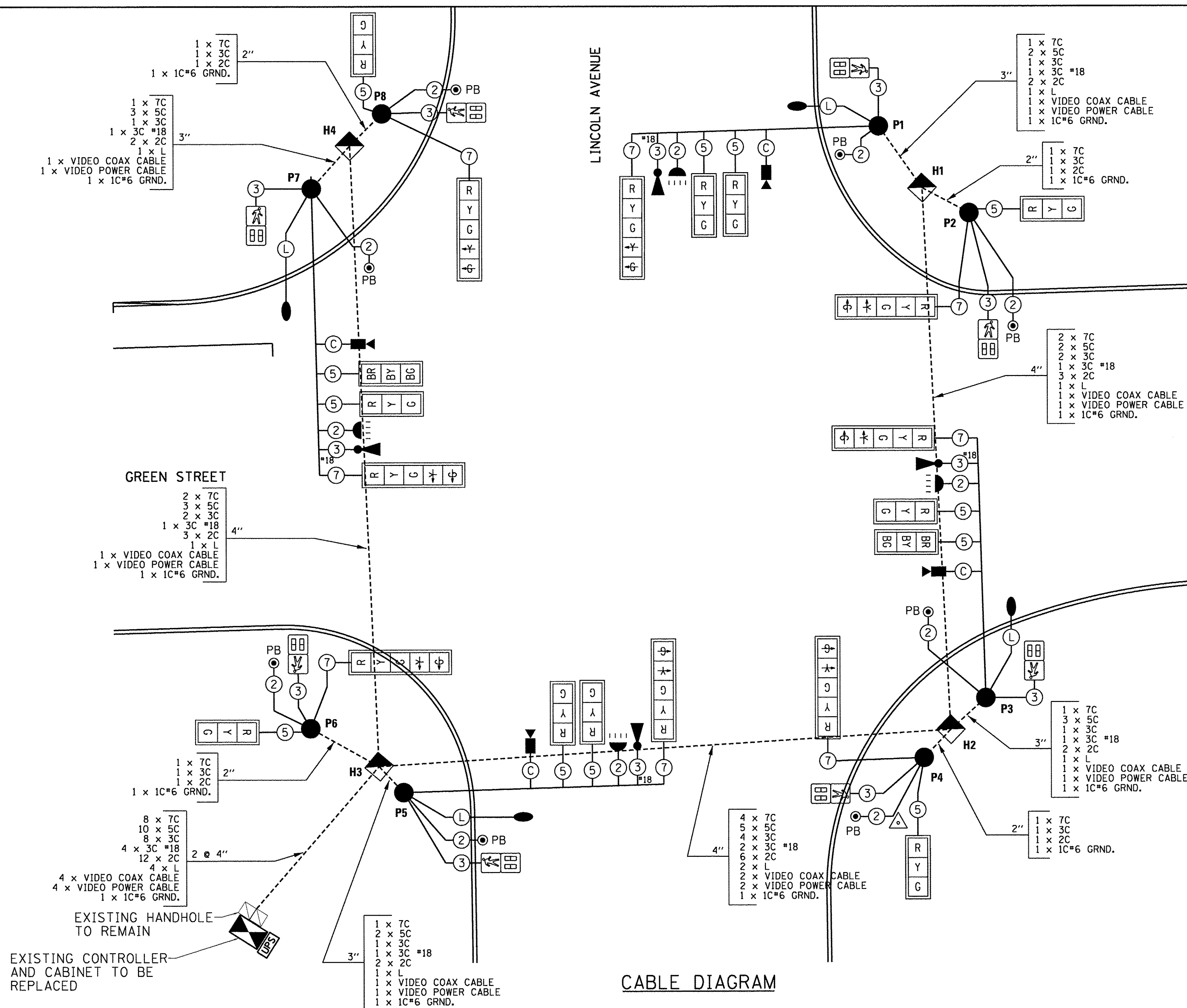
PRIORITY LANE INTERVAL	1	2
MOVEMENT		

1. ONCE PREEMPTION HAS BEEN CALLED, TERMINATION OF A PHASE(S) SHALL BE IDENTICAL TO NORMAL SEQUENCE OF OPERATION'S TERMINATION OF A PHASE(S) AS DESCRIBED IN STANDARD 857001.
2. ALL RED CLEARANCE INTERVALS MUST BE DISPLAYED AFTER THE YELLOW CLEARANCE INTERVAL WHEN ENTERING OR LEAVING THE PREEMPTION SEQUENCE.

NOTES:


















1. LBI = LEADING BICYCLE INTERVAL, WHICH SHALL BE A MINIMUM OF 5 SECONDS
2. LPI = LEADING PEDESTRIAN INTERVAL, WHICH SHALL BE A MINIMUM OF 5 SECONDS
3. ALL RED TIMES FOLLOWING THROUGH PHASES SHALL BE 2.5 SECONDS
4. ALL RED TIMES FOLLOWING LEFT TURN PHASES SHALL BE 2.0 SECONDS

PHASE		1			2			3			4			
		YELLOW			RED + (LBI & LPI)			YELLOW			RED			
														CYCLE LENGTH
GREEN TIME IN SECONDS	AM	6.0	3.0	7.0	29.3	3.2	2.5	13.0	3.0	2.0	35.3	3.2	2.5	110 SEC.
	PM	5.0	3.0	7.0	34.3	3.2	2.5	5.0	3.0	2.0	39.3	3.2	2.5	110 SEC.



CABLE DIAGRAM

CABLE DIAGRAM LEGEND

	CONTROLLER CABINET		ELECTRIC CABLE IN CONDUIT
	HANDHOLE		DENOTES NUMBER OF CONDUCTORS ALL CABLE NO. 14 EXCEPT AS INDICATED
	MAST ARM POLE, SIGNAL POST, OR PB POST		ROADWAY LIGHTING CABLE 3-1c*10
	PEDESTRIAN PUSH-BUTTON		LUMINAIRE (SEE ROADWAY LIGHTING PLANS)
	SIGNAL FACE		VIDEO COAX AND POWER CABLE
	SIGNAL FACE AND BACKPLATE		EMERGENCY VEHICLE PREEMPTION DETECTOR
	BICYCLE SIGNAL FACE AND BACKPLATE		CONFIRMATION BEACON
	PEDESTRIAN SIGNAL FACE		THERMAL VEHICLE DETECTOR
	UNINTERRUPTIBLE POWER SUPPLY		

CABLE DIAGRAM / PHASE DESIGNATION DIAGRAM /
TRAFFIC SIGNAL GENERAL NOTES / BILL OF MATERIALS

SCALE : NONE

FILE NAME =
Z:\Plans\sheets\Project1\P1-sht-cable03.dgn
PLOT DATE =
8/25/2016 1:45:29 PM

DESIGNED	-	JGK
DRAWN	-	RLA
CHECKED	-	KNB
DATE	-	8/26/2016

STATE OF ILLINOIS
DEPARTMENT OF TRANSPORTATION

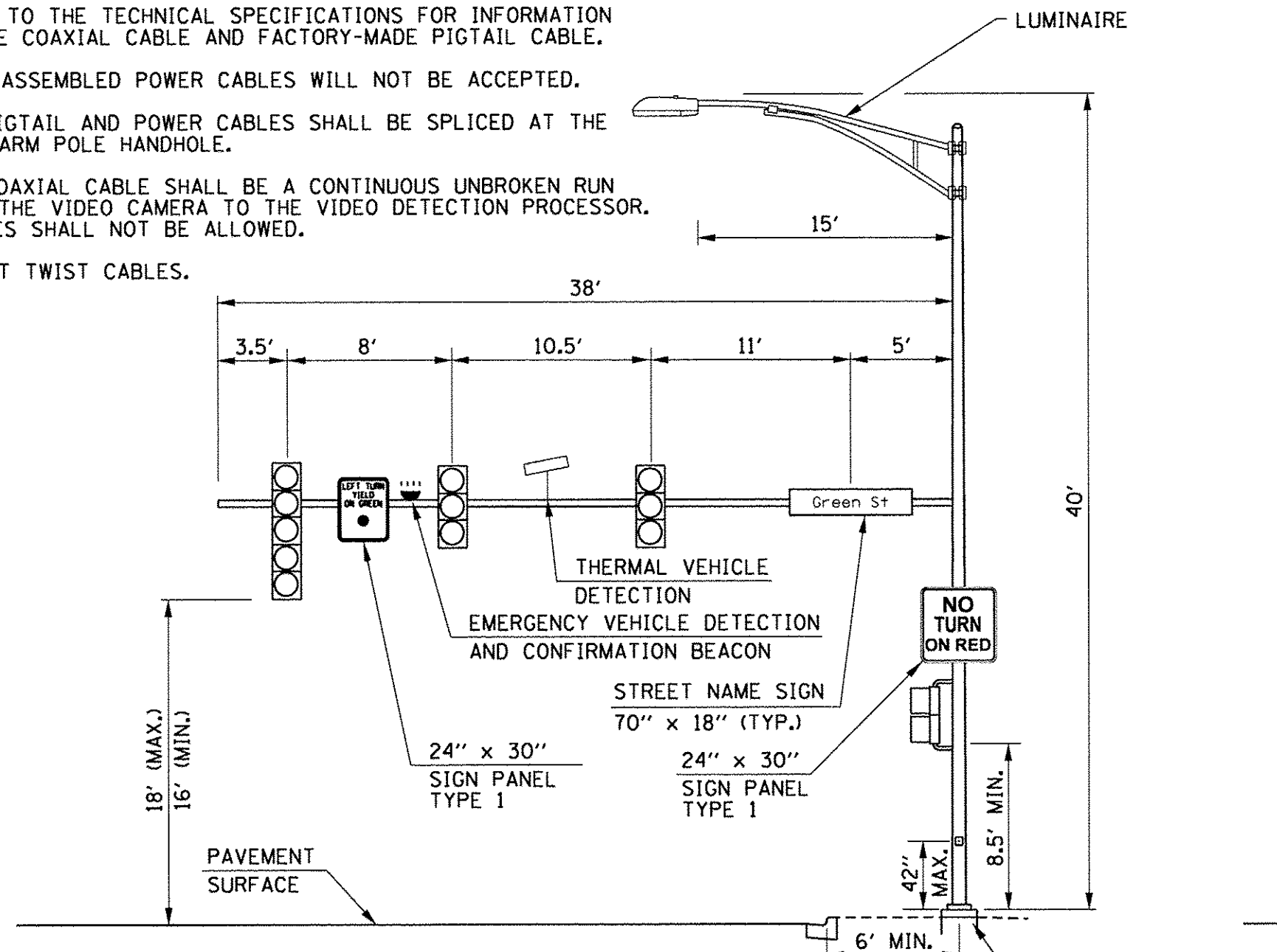
PROJECT 1 - GREEN STREET & LINCOLN AVENUE
CABLE PLAN

SCALE: 1"=10'	SHEET NO.	OF	SHEETS	STA.	TO STA.
---------------	-----------	----	--------	------	---------

F.A.U. RTE.	SECTION	COUNTY	TOTAL SHEETS	SHEET NO.
7126	15-00304-01-PV	CHAMPAIGN	236	145
MCORE PROJECT 1		CONTRACT NO. 91539		
JOB NO. C-95-305-16 ILLINOIS FED. AID PROJECT TIG-5181(057)				

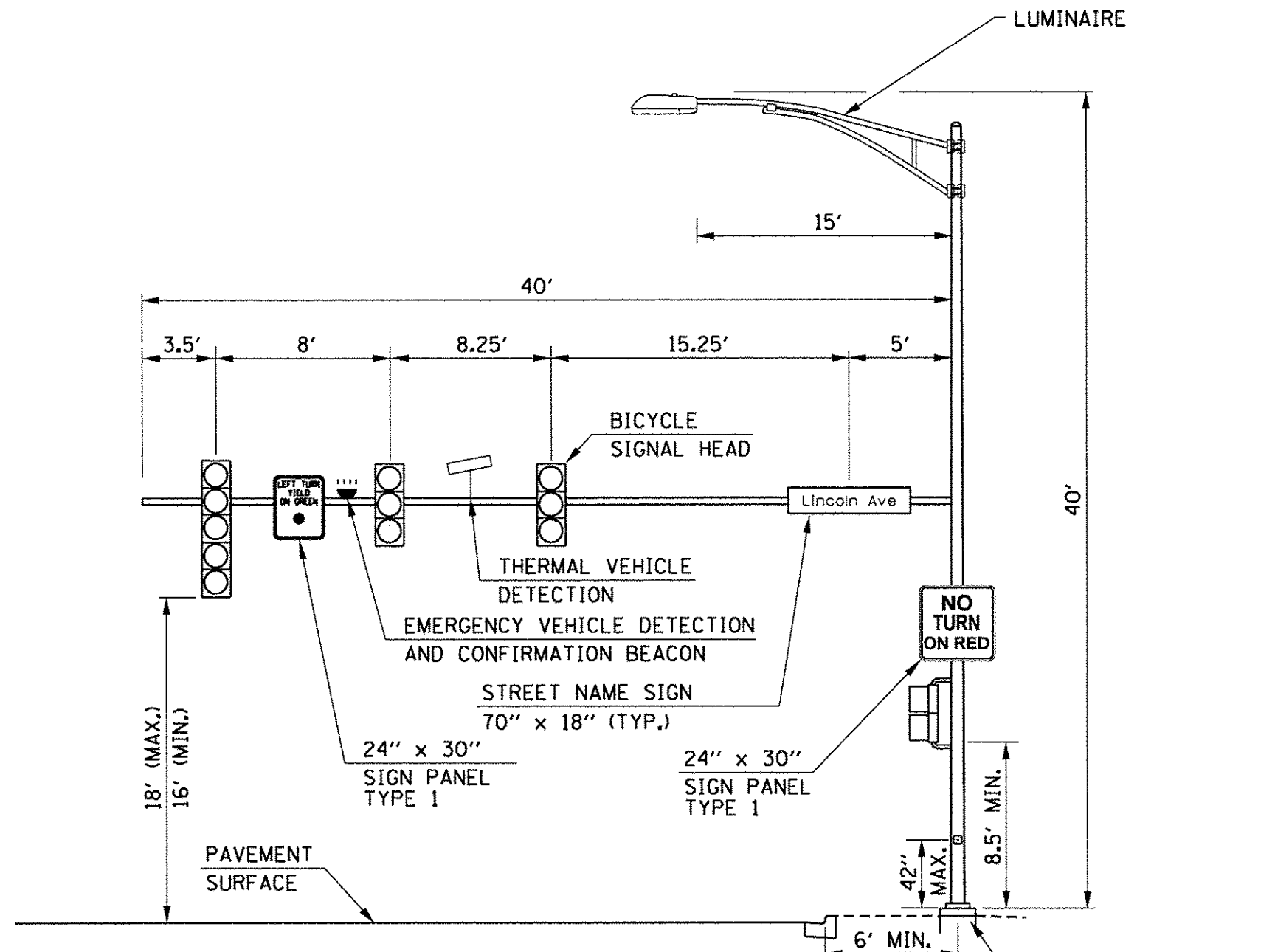
NOTES:

1. REFER TO THE TECHNICAL SPECIFICATIONS FOR INFORMATION ON THE COAXIAL CABLE AND FACTORY-MADE PIGTAIL CABLE.
2. FIELD-ASSEMBLED POWER CABLES WILL NOT BE ACCEPTED.
3. THE PIGTAIL AND POWER CABLES SHALL BE SPICED AT THE MAST ARM POLE HANDHOLE.
4. THE COAXIAL CABLE SHALL BE A CONTINUOUS UNBROKEN RUN FROM THE VIDEO CAMERA TO THE VIDEO DETECTION PROCESSOR. SPICES SHALL NOT BE ALLOWED.
5. DO NOT TWIST CABLES.



MAST ARM LOADING DIAGRAM (P1)

GREEN STREET AND LINCOLN AVENUE
NORTHEAST QUADRANT (LOOKING NORTH)



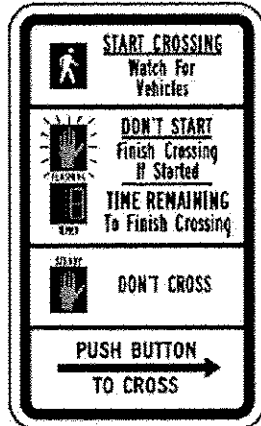
MAST ARM LOADING DIAGRAM (P3)

GREEN STREET AND LINCOLN AVENUE
SOUTHEAST QUADRANT (LOOKING EAST)

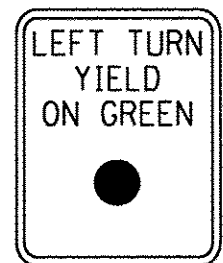
PEDESTRIAN PUSH-BUTTON
SIGN DETAIL

9' x 15'

THE COST OF THE PEDESTRIAN PUSH-BUTTON
BE INCLUDED IN THE COST OF THE PEDESTRIAN PUSH-BUTTON



R10-3e



R 10-12
24" x 30"

SIGN PANEL TYPE 1

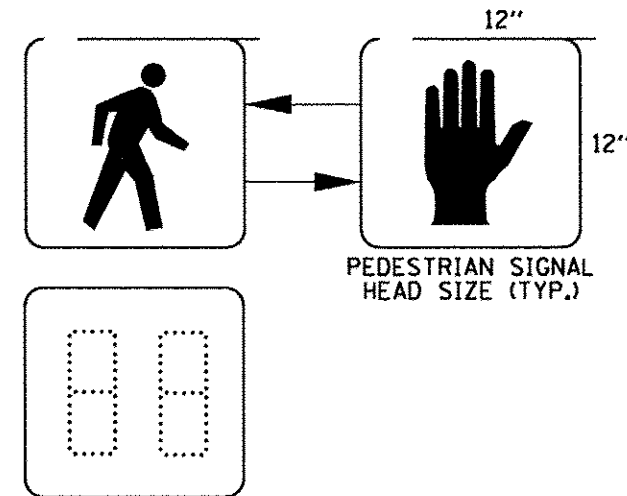
0.8" BORDER
4 REQUIRED OF R10-12 = 20.0 SQ FT
ONLY HIGH INTENSITY SHEETING
SHALL BE USED



R 10-11
36" x 36"

SIGN PANEL TYPE 1

0.8" BORDER
4 REQUIRED OF R10-11 = 36.0 SQ FT
ONLY HIGH INTENSITY SHEETING
SHALL BE USED

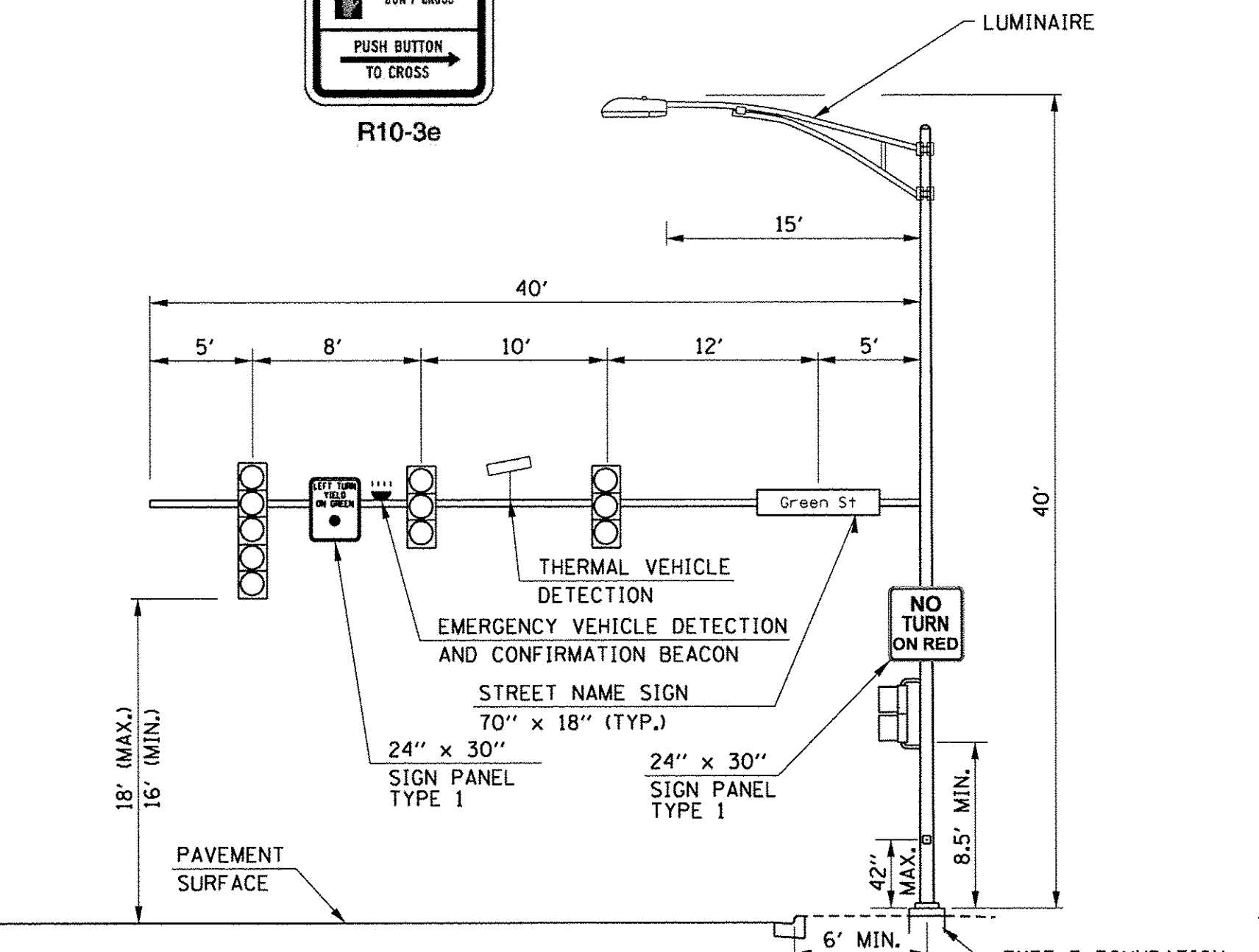


PEDESTRIAN COUNTDOWN
SIGNAL DISPLAY DETAIL

NO SCALE

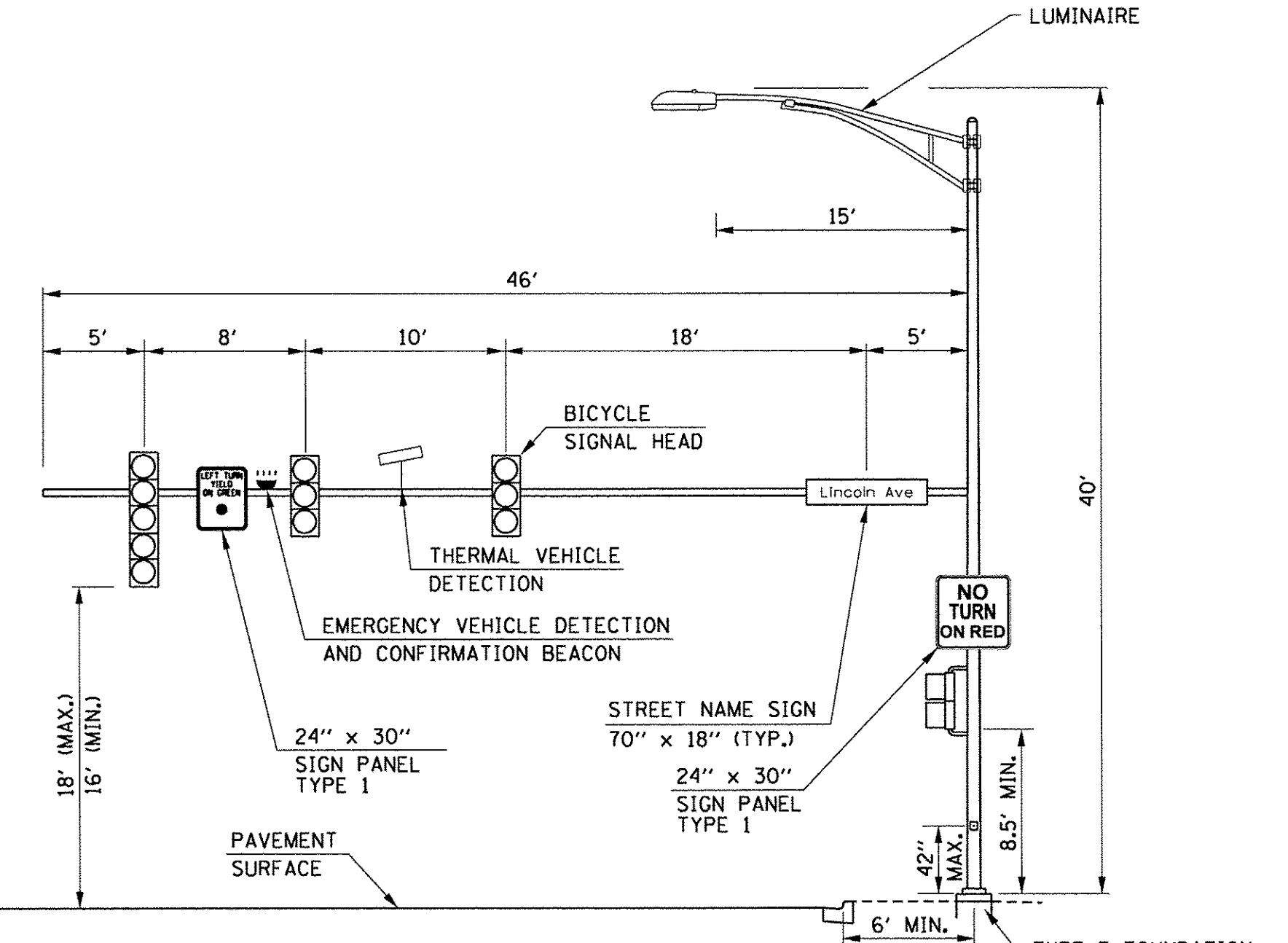
SIGNAL POST
LOADING DIAGRAM (P4)

GREEN STREET AND LINCOLN AVENUE
SOUTHEAST QUADRANT



MAST ARM LOADING DIAGRAM (P5)

GREEN STREET AND LINCOLN AVENUE
SOUTHWEST QUADRANT (LOOKING SOUTH)



MAST ARM LOADING DIAGRAM (P7)

GREEN STREET AND LINCOLN AVENUE
NORTHWEST QUADRANT (LOOKING WEST)

SIGNAL POST
LOADING DIAGRAM (P6)

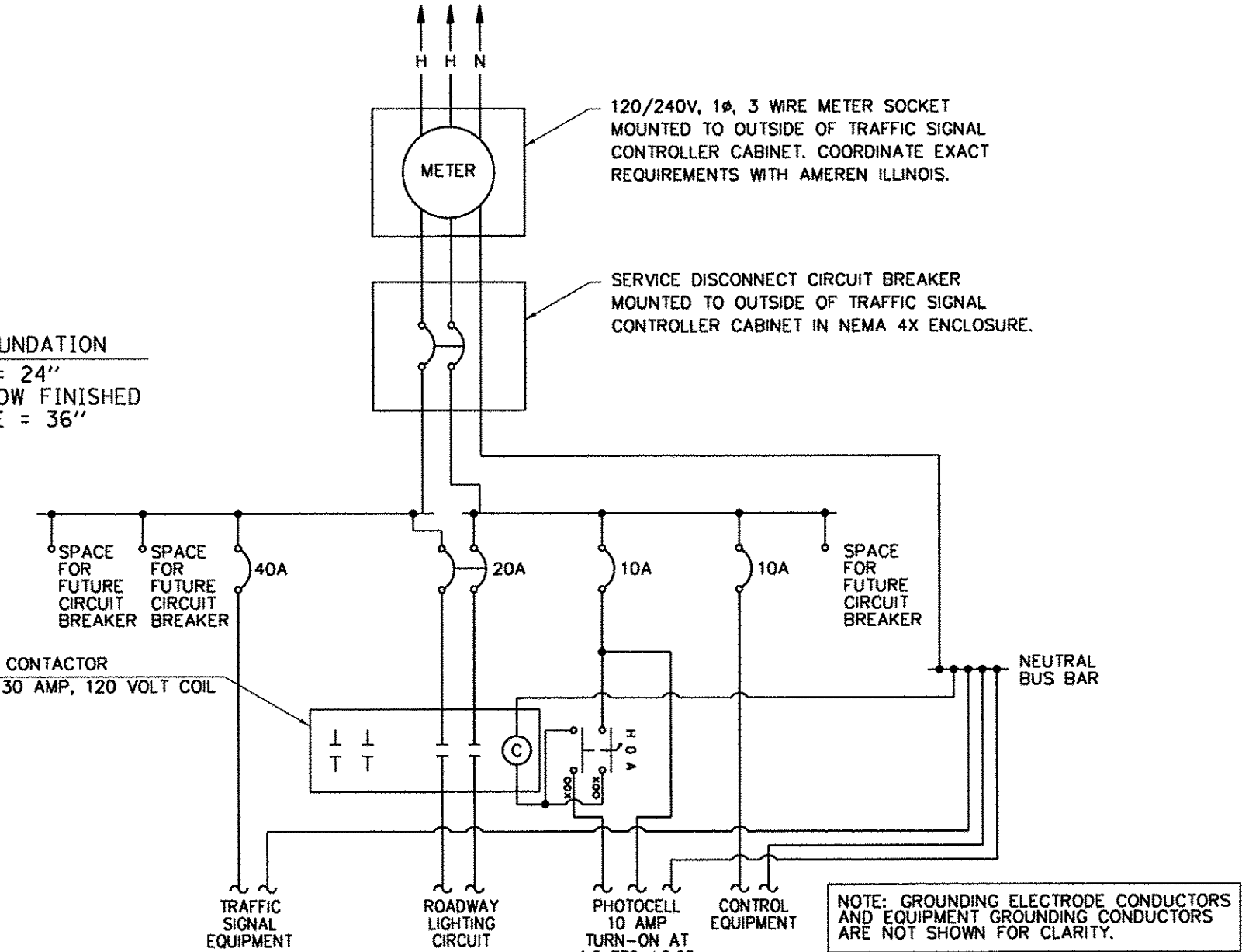
GREEN STREET AND LINCOLN AVENUE
SOUTHWEST QUADRANT

SIGNAL POST
LOADING DIAGRAM (P8)

GREEN STREET AND LINCOLN AVENUE
NORTHWEST QUADRANT

PANELBOARD		TRAFFIC SIGNAL		MAIN		M.I.O.		LOCATION:	
VOLTAGE		120/240		BUS RATING		60 AMPS		GREEN STREET AT LINCOLN AVENUE	
PHASE/WIRE		1PH/3W		MOUNTING		INTERIOR ONLY			
DESCRIPTION	CKT. NO.	LOAD (VA)	AMPS/POLES	CKT. BKR.	CKT. BKR.	AMPS/POLES	LOAD (VA)	CKT. NO.	DESCRIPTION
TRAFFIC SIGNAL EQUIPMENT	1	3500	40/1					2	SPACE
CONTROL EQUIPMENT	3	800	10/1					4	PHOTOCELL
ROADWAY LIGHTING CIRCUIT	5	560	20/2					6	SPACE
	7	560						8	SPACE
SUBTOTAL "A"		4060					0		
SUBTOTAL "B"		1360					300		
TOTAL VOLT-AMPERES A & B:		5720 VA							

TRAFFIC SIGNAL CONTROLLER PANELBOARD SCHEDULE



TRAFFIC SIGNAL CONTROLLER INSTALLATION DIAGRAM

SIGNAL POST
LOADING DIAGRAM (P6)

GREEN STREET AND LINCOLN AVENUE
SOUTHWEST QUADRANT

SIGNAL POST
LOADING DIAGRAM (P8)

GREEN STREET AND LINCOLN AVENUE
NORTHWEST QUADRANT

TRAFFIC SIGNAL MOUNTING DETAILS

ONE 3-SECTION SIGNAL HEAD AND ONE 5-SECTION SIGNAL HEAD
BRACKET MOUNTED WITH BOTTOM SECTIONS AT COMMON ELEVATION

