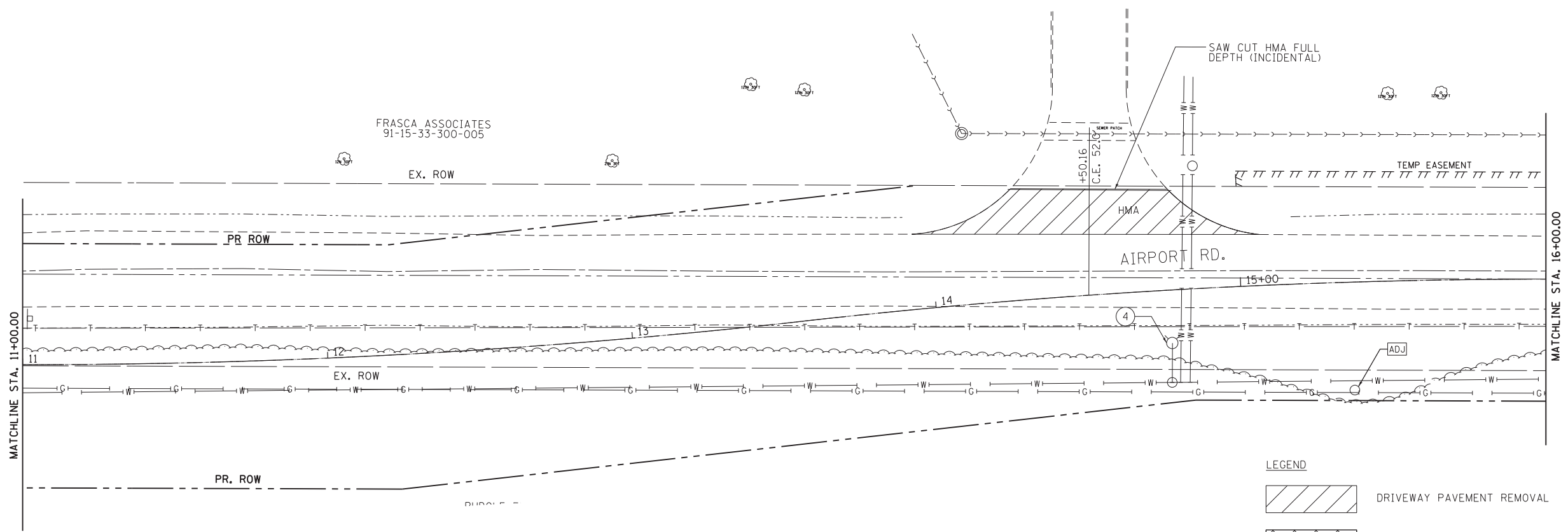
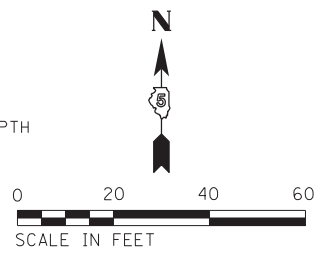


- ① UTILITY POLE TO BE RELOCATED BY UTILITY COMPANY
- ② VALVE TO BE ADJUSTED BY UTILITY COMPANY
- ③ SPLICE BOX TO BE RELOCATED BY UTILITY COMPANY
- ④ FIRE HYDRANT AND VALVE TO BE RELOCATED BY UTILITY COMPANY
- ⑤ UTILITY MANHOLE TO BE ADJUSTED OR RELOCATED BY UTILITY COMPANY



LEGEND

	DRIVEWAY PAVEMENT REMOVAL
	PAVEMENT REMOVAL

DRIVER = #PLTDRV.L
 FILE NAME = F:\2014\11\0001-200\CAD\Plans\11\0001-00-st-Removal.dgn

Farnsworth GROUP, INC.
 2211 West Bradley Avenue
 Champaign, Illinois 61821
 217/352-7408, 217/352-7409 fax

USER NAME = slisonby	DESIGNED - DSC	REVISED -
PRINTER = \$SYSPRINTER_NAME\$	DRAWN - JDK	REVISED -
PLOT SCALE = 20.0000' / in.	CHECKED - JLF	REVISED -
PLOT DATE = 3/17/2017	DATE - 01/26/2017	REVISED -

**STATE OF ILLINOIS
 DEPARTMENT OF TRANSPORTATION**

REMOVAL PLAN - AIRPORT ROAD		
SCALE: 1" = 20'	SHEET NO. 1 OF 4 SHEETS	STA. 6+00.00 TO STA. 16+00.00

F.A.U. RTE.	SECTION	COUNTY	TOTAL SHEETS	SHEET NO.
7190	13-00532-00-PV	CHAMPAIGN	80	15
CONTRACT NO.				
ILLINOIS FED. AID PROJECT				



FRASCA ASSOCIATES
91-15-33-300-005

133.7

PIPE CULVERT REMOVAL

SAW CUT HMA FULL DEPTH (INCIDENTAL)

PROTECT TREE (INCIDENTAL)

AGG. DRIVEWAY TO BE REMOVED TO R.O.W.

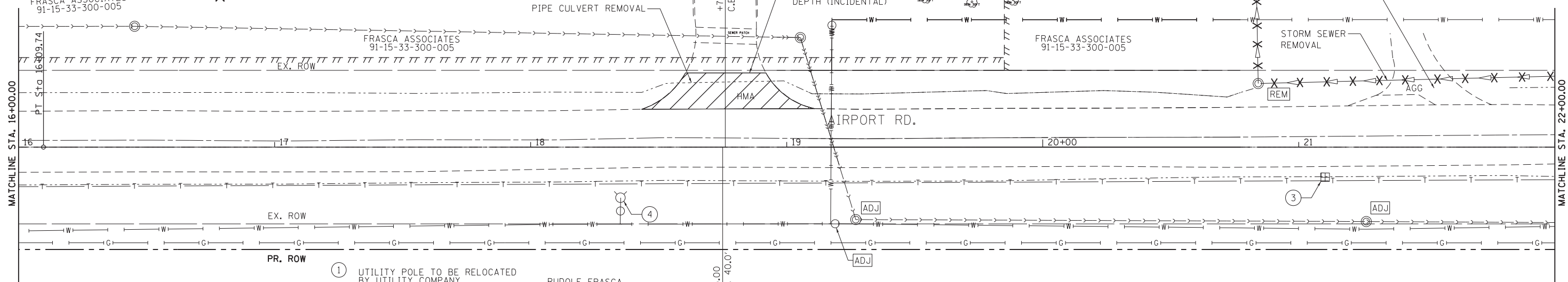
ABANDON AND FILL EXISTING STORM SEWER

FRASCA ASSOCIATES
91-15-33-300-005

STORM SEWER REMOVAL

MATCHLINE STA. 16+00.00

MATCHLINE STA. 22+00.00



- ① UTILITY POLE TO BE RELOCATED BY UTILITY COMPANY
- ② VALVE TO BE ADJUSTED BY UTILITY COMPANY
- ③ SPLICE BOX TO BE RELOCATED BY UTILITY COMPANY
- ④ FIRE HYDRANT AND VALVE TO BE RELOCATED BY UTILITY COMPANY
- ⑤ UTILITY MANHOLE TO BE ADJUSTED OR RELOCATED BY UTILITY COMPANY

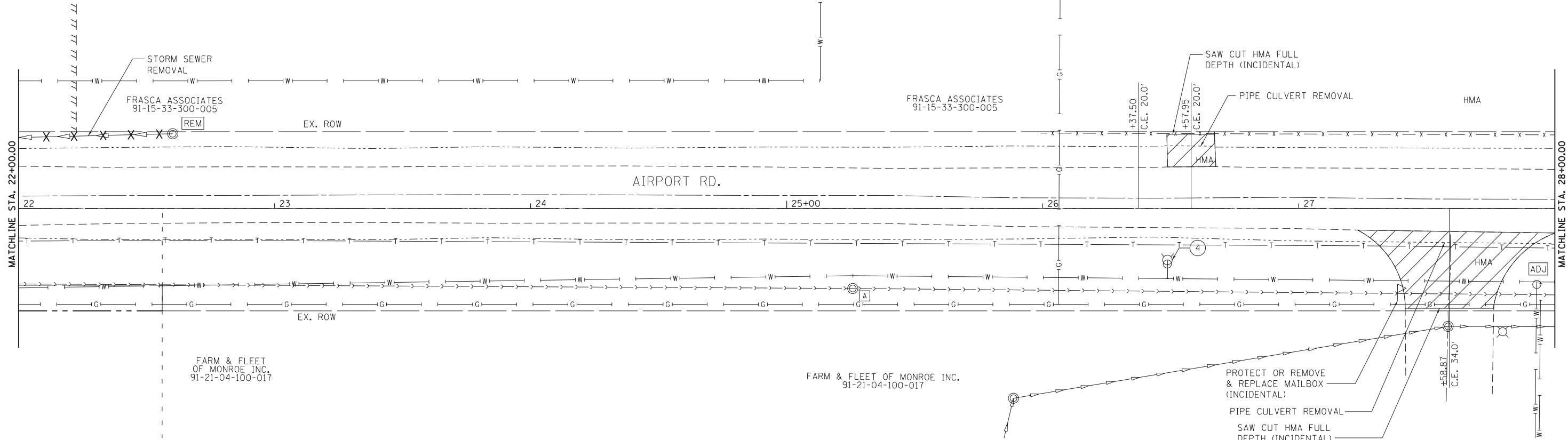
RUDOLF FRASCA
91-21-04-100-011

LEGEND

- DRIVEWAY PAVEMENT REMOVAL
- ABANDON AND FILL EXISTING STORM SEWER
- TREE REMOVAL

MATCHLINE STA. 22+00.00

MATCHLINE STA. 28+00.00



FARM & FLEET OF MONROE INC.
91-21-04-100-017

FARM & FLEET OF MONROE INC.
91-21-04-100-017

PROTECT OR REMOVE & REPLACE MAILBOX (INCIDENTAL)

PIPE CULVERT REMOVAL

SAW CUT HMA FULL DEPTH (INCIDENTAL)

Farnsworth GROUP, INC.
2211 West Bradley Avenue
Champaign, Illinois 61821
217/352-7408, 217/352-7409 fax

USER NAME = slisenby
PRINTER = \$SYSPRINTER_NAME\$
PLOT SCALE = 20.0000' / in.
PLOT DATE = 3/17/2017

DESIGNED - DSC
DRAWN - JDK
CHECKED - JLF
DATE - 01/26/2017

REVISED -
REVISED -
REVISED -
REVISED -

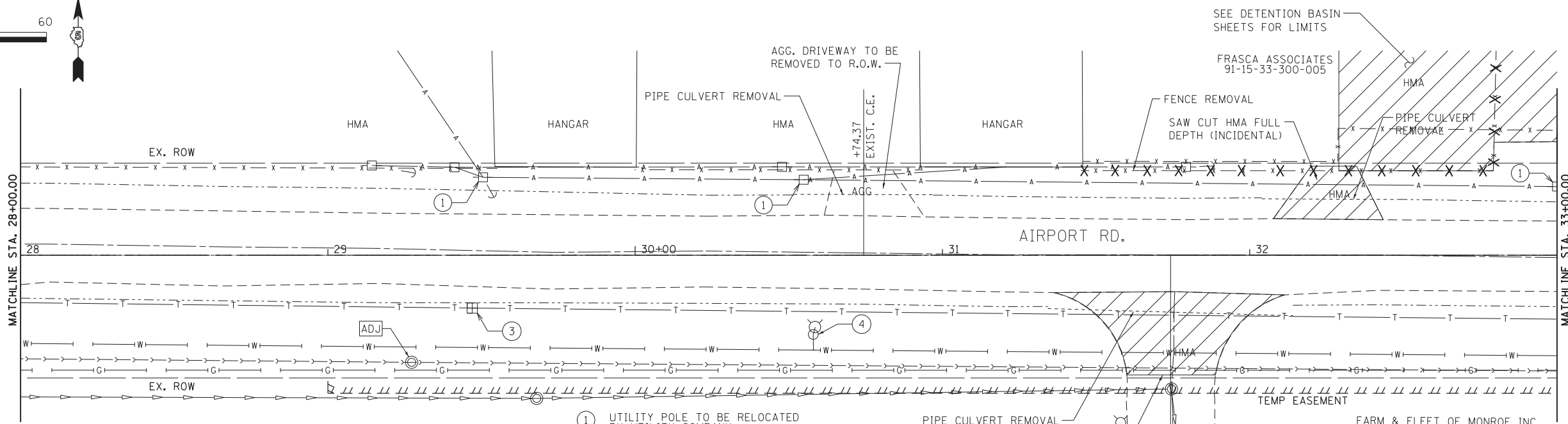
**STATE OF ILLINOIS
DEPARTMENT OF TRANSPORTATION**

REMOVAL PLAN - AIRPORT ROAD

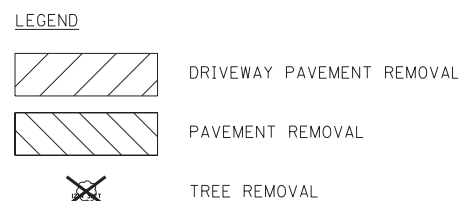
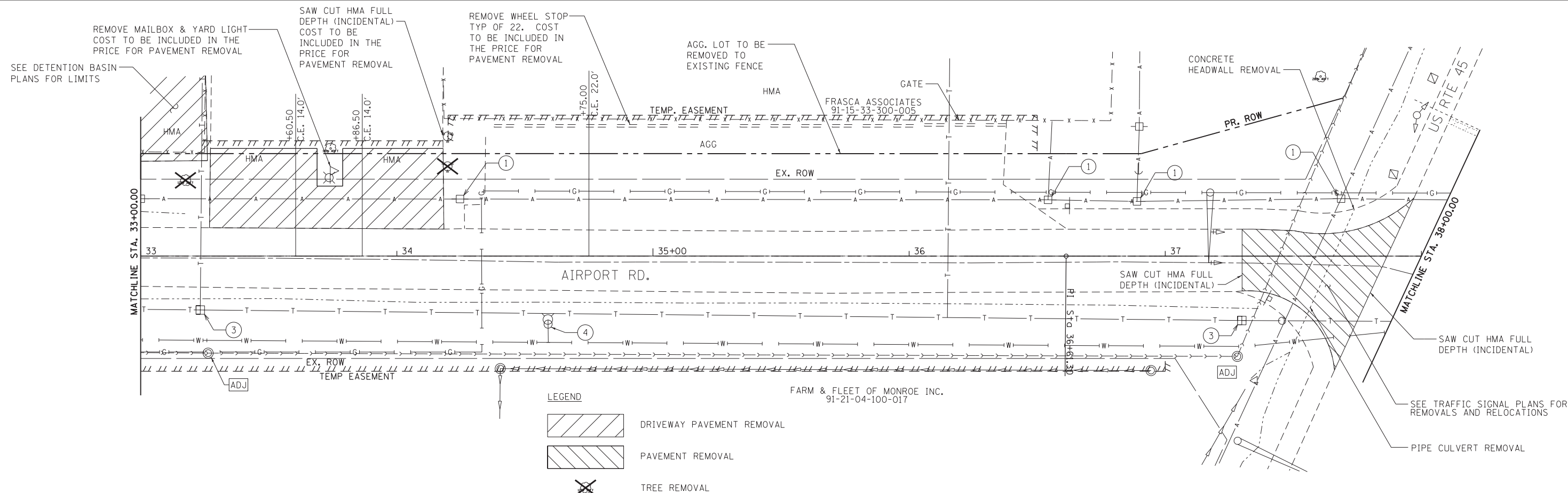
SCALE: 1" = 20' SHEET NO. 2 OF 4 SHEETS STA. 16+00.00 TO STA. 28+00.00

F.A.U. RTE.	SECTION	COUNTY	TOTAL SHEETS	SHEET NO.
7190	13-00532-00-PV	CHAMPAIGN	80	16
CONTRACT NO.				
ILLINOIS FED. AID PROJECT				

DRIVER = #PLT.DWG
 FILE NAME = F:\2014\140001-200\CADD\Plans\140001-00-Int-Removal2.dgn



- ① UTILITY POLE TO BE RELOCATED BY UTILITY COMPANY
- ② VALVE TO BE ADJUSTED BY UTILITY COMPANY
- ③ SPLICE BOX TO BE RELOCATED BY UTILITY COMPANY
- ④ FIRE HYDRANT AND VALVE TO BE RELOCATED BY UTILITY COMPANY
- ⑤ UTILITY MANHOLE TO BE ADJUSTED OR RELOCATED BY UTILITY COMPANY



DRIVER = #PLT.DWG.*
 FILE NAME = F:\2014\14001-200\CADD\Plans\14001-00-Int-Removal13.dgn

Farnsworth GROUP, INC.
 2211 West Bradley Avenue
 Champaign, Illinois 61821
 217/352-7408, 217/352-7409 fax

USER NAME = slisenby
 PRINTER = \$SYSPRINTER_NAME\$
 PLOT SCALE = 20.0000' / in.
 PLOT DATE = 3/17/2017

DESIGNED - DSC
 DRAWN - JDK
 CHECKED - JLF
 DATE - 01/26/2017

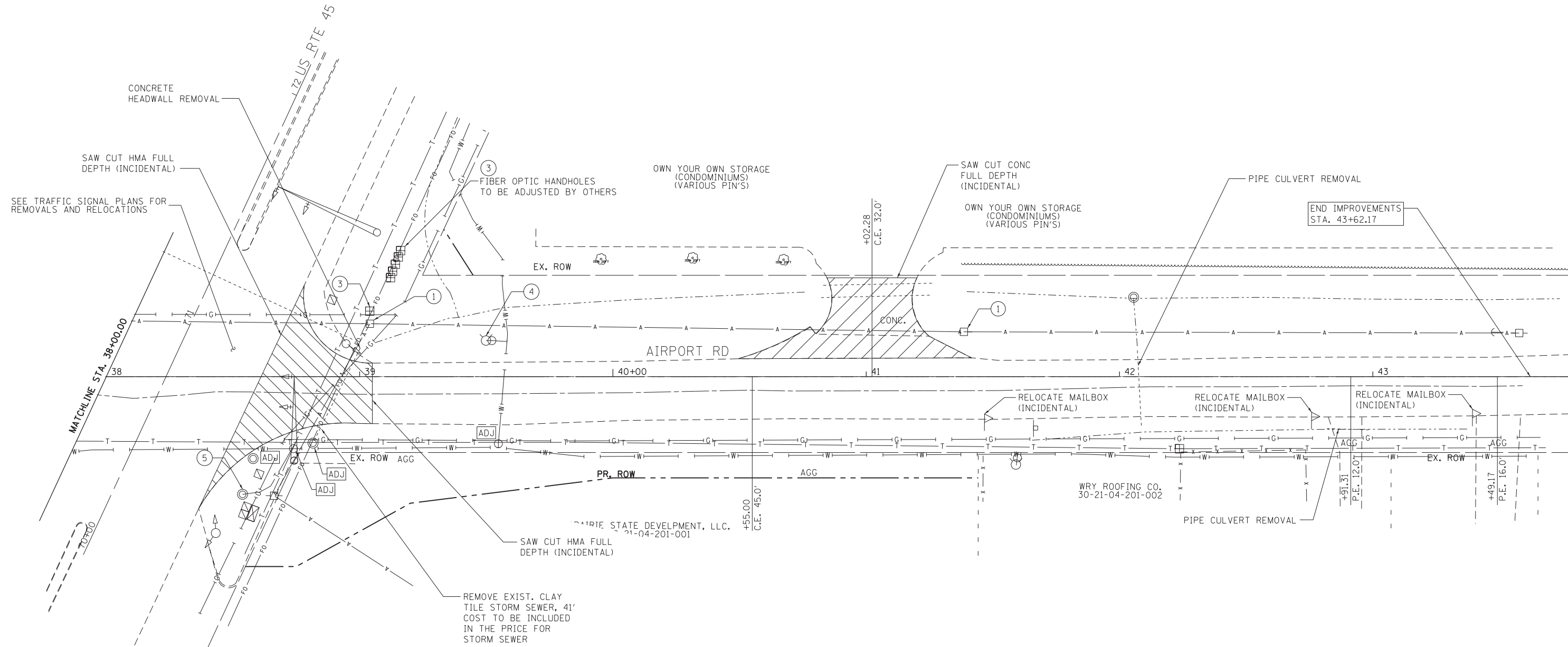
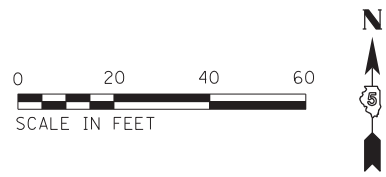
REVISED -
 REVISED -
 REVISED -
 REVISED -

STATE OF ILLINOIS
DEPARTMENT OF TRANSPORTATION

REMOVAL PLAN - AIRPORT ROAD

SCALE: 1" = 20' SHEET NO. 3 OF 4 SHEETS STA. 16+00.00 TO STA. 38+00.00

F.A.U. RTE.	SECTION	COUNTY	TOTAL SHEETS	SHEET NO.
7190	13-00532-00-PV	CHAMPAIGN	80	17
CONTRACT NO.				
ILLINOIS FED. AID PROJECT				



LEGEND

- DRIVEWAY PAVEMENT REMOVAL
- PAVEMENT REMOVAL

- ① UTILITY POLE TO BE RELOCATED BY UTILITY COMPANY
- ② VALVE TO BE ADJUSTED BY UTILITY COMPANY
- ③ SPLICE BOX TO BE RELOCATED BY UTILITY COMPANY
- ④ FIRE HYDRANT AND VALVE TO BE RELOCATED BY UTILITY COMPANY
- ⑤ UTILITY MANHOLE TO BE ADJUSTED OR RELOCATED BY UTILITY COMPANY

DRIVER = #PLT.DWG
 FILE NAME = F:\2014\11\001-200\CAD\Plans\11\001-00-st-Removal14.dgn

Farnsworth GROUP, INC.
 2211 West Bradley Avenue
 Champaign, Illinois 61821
 217/352-7408, 217/352-7409 fax

USER NAME = slisenby	DESIGNED - DSC	REVISED -
PRINTER = \$SYSprinter_NAME\$	DRAWN - JDK	REVISED -
PLOT SCALE = 20.0000' / in.	CHECKED - JLF	REVISED -
PLOT DATE = 3/17/2017	DATE - 01/26/2017	REVISED -

**STATE OF ILLINOIS
 DEPARTMENT OF TRANSPORTATION**

REMOVAL PLAN - AIRPORT ROAD
 SCALE: 1" = 20' SHEET NO. 4 OF 4 SHEETS STA. 38+00.00 TO STA. 43+62.17

F.A.U. RTE.	SECTION	COUNTY	TOTAL SHEETS	SHEET NO.
7190	13-00532-00-PV	CHAMPAIGN	80	18
CONTRACT NO.				
ILLINOIS FED. AID PROJECT				