



BENCHMARK BM1

ELEV. 747.01
 STA. 63+77.75, 53.68' RT
 SET CHLSD "□" ON TOP OF CONC LIGHT
 POLE BASE AT SE CORNER OF WINDSOR
 RD. & PHILO RD.

N 1,244,414.29
 E 1,024,300.72

BENCHMARK BM3

ELEV. 727.67
 STA. 32+53.81, 32.18' RT
 SET CHLSD "X" IN SW CORNER OF STEEL
 LIGHT POLE BASE. 30' EAST OF
 ENT TO MEADOWBROOK PARK.

N 1,244,414.56
 E 1,021,176.71

BENCHMARK BM2

ELEV. 744.10
 STA. 49+95.53, 41.36' RT
 CHLSD "□" SET ON NORTH SIDE OF CONC
 VAULT, S. SIDE OF WINDSOR RD - 300'
 EAST OF LYNN ST.

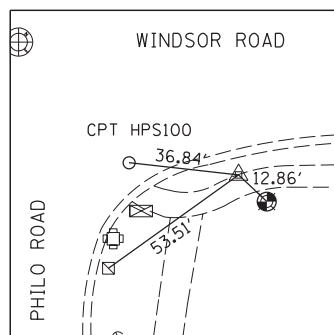
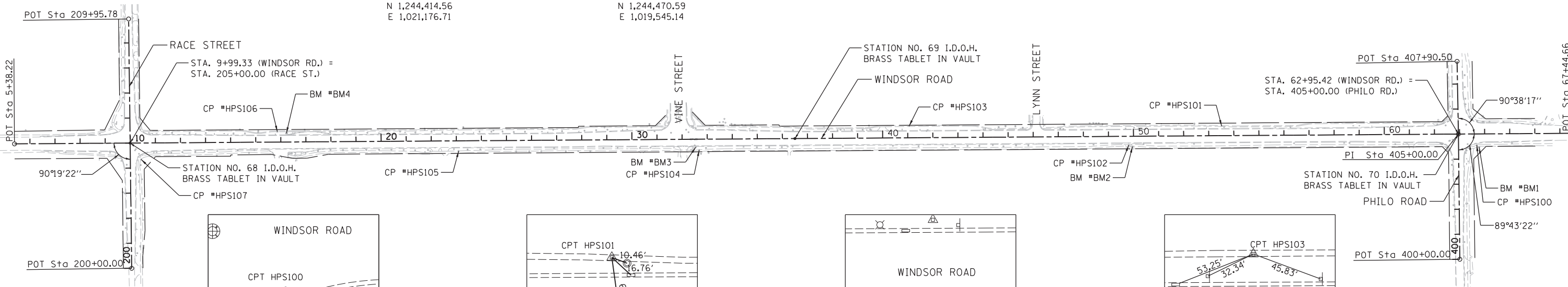
N 1,244,417.21
 E 1,022,918.45

BENCHMARK BM4

ELEV. 740.82
 STA. 16+22.74, 34.94' LT
 SET SPIKE NAIL IN NORTH FACE OF
 PP, ACROSS FROM ENT TO CLARK
 LINDSEY VILLAGE.

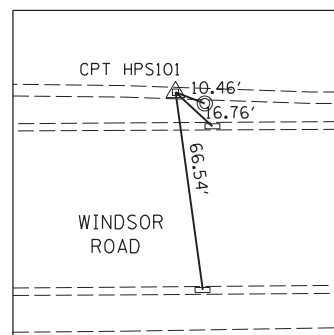
N 1,244,470.59
 E 1,019,545.14

WINDSOR ROAD ALIGNMENT CONTROL					
ALIGNMENT POINT	DESCRIPTION	STATION	BEARING	NORTHING	EASTING
BEGIN	P.O.T.	5+38.22		1,244,428.3200	1,018,460.9100
END	P.O.T.	67+44.66	N 89°36'38" E	1,244,470.4900	1,024,667.2100
RACE STREET ALIGNMENT CONTROL					
ALIGNMENT POINT	DESCRIPTION	STATION	BEARING	NORTHING	EASTING
BEGIN	P.O.T.	200+00		1,243,931.4900	1,018,928.2300
END	P.O.T.	209+95.78	N 0°42'44" W	1,244,927.2000	1,018,915.8500
PHILO ROAD ALIGNMENT CONTROL					
ALIGNMENT POINT	DESCRIPTION	STATION	BEARING	NORTHING	EASTING
BEGIN	P.O.T.	400+00		1,243,967.4700	1,024,223.8000
	P.I.	405+00.00	N 0°40'00" W	1,244,467.4400	1,024,217.9800
END	P.O.T.	407+90.50	N 1°01'39" W	1,244,757.8900	1,024,212.7700



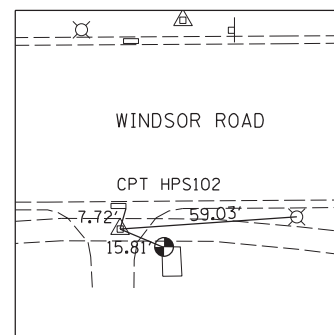
CONTROL POINT #HPS100

SET MAG NAIL IN NORTH SIDE OF
 SIDEWALK AT SE CORNER OF
 WINDSOR RD. & PHILO RD.
 STA. 63+68.43, 44.73' RT
 N 1,244,423.17
 E 1,024,291.43



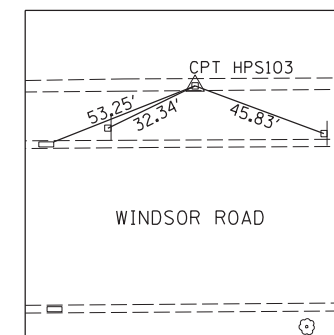
CONTROL POINT #HPS101

SET IN SIDEWALK NORTH SIDE OF
 WINDSOR RD. APPROX 1000' WEST
 OF PHILO RD.
 STA. 53+51.69, 38.84' LT
 N 1,244,499.82
 E 1,023,274.06



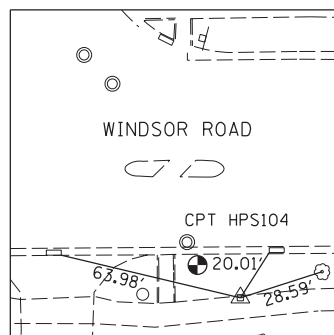
CONTROL POINT #HPS102

SET MAG NAIL IN CONC. ENT.
 S. SIDE OF WINDSOR RD. 300'
 EAST OF LYNN ST.
 STA. 49+80.91, 35.33' RT
 N 1,244,423.14
 E 1,022,903.79



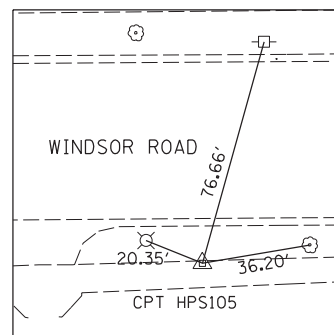
CONTROL POINT #HPS103

SET MAG NAIL IN SIDEWALK N. SIDE OF
 WINDSOR RD. 900' EAST OF VINE ST., APPROX.
 100' EAST OF CONC. ENT. TO PARKING LOT
 STA. 41+05.89, 46.77' LT
 N 1,244,499.38
 E 1,022,028.23



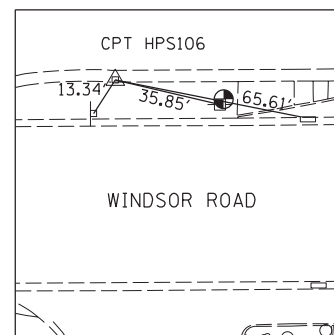
CONTROL POINT #HPS104

SET MAG NAIL IN N. SIDE OF BIKE
 PATH, 40' EAST OF ENT. TO
 MEADOWBROOK PARK.
 STA. 32+68.01, 43.16' RT
 N 1,244,403.68
 E 1,021,190.98



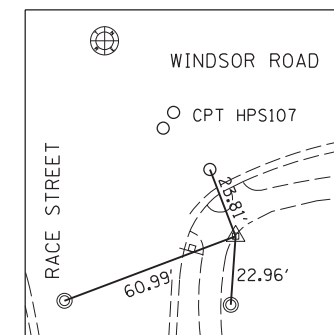
CONTROL POINT #HPS105

SET MAG NAIL 50' EAST OF CONC.
 ENT. IN BIKEPATH. ENT SITS 900'
 WEST OF ENT TO MEADOWBROOK PARK.
 STA. 23+08.72, 40.81' RT
 N 1,244,399.50
 E 1,020,231.79
 ELEV. 731.72



CONTROL POINT #HPS106

SET MAG NAIL IN SIDEWALK N. SIDE
 OF WINDSOR RD. IN LINE WITH ENT.
 TO CLARK LINDSEY VILLAGE
 STA. 15+86.65, 41.64' LT
 N 1,244,477.04
 E 1,019,509.04



CONTROL POINT #HPS107

SET MAG NAIL IN SIDEWALK
 AT SE CORNER OF RACE ST.
 AND WINDSOR RD.
 STA. 10+42.55, 65.36' RT
 N 1,244,366.35
 E 1,018,965.73

DESIGNED	MH	4/29/14
DRAWN	RSJ	4/29/14
REVIEWED	MH	4/29/14

FILE NAME =	USER NAME = johns00944	DESIGNED - MH	REVISED -
D513L0201-sht-ATB-001.dgn		DRAWN - RSJ	REVISED -
MODEL NAME =	PLOT SCALE = 400.0000' / in.	CHECKED - MH	REVISED -
Geom Sheet 1	PLOT DATE = 06/12/2014	DATE - 05-03-2014	REVISED -

STATE OF ILLINOIS
 DEPARTMENT OF TRANSPORTATION

ALIGNMENT, TIES AND BENCHMARKS
 WINDSOR ROAD

SCALE: SHEET 1 OF 2 SHEETS STA. TO STA.

F.A.P. RTE.	SECTION	COUNTY	TOTAL SHEETS	SHEET NO.
7145	13-00540-00-PV	CHAMPAIGN	80	17
	13L0201	CONTRACT NO.	91515	

HORIZONTAL CONTROL DIAGRAM

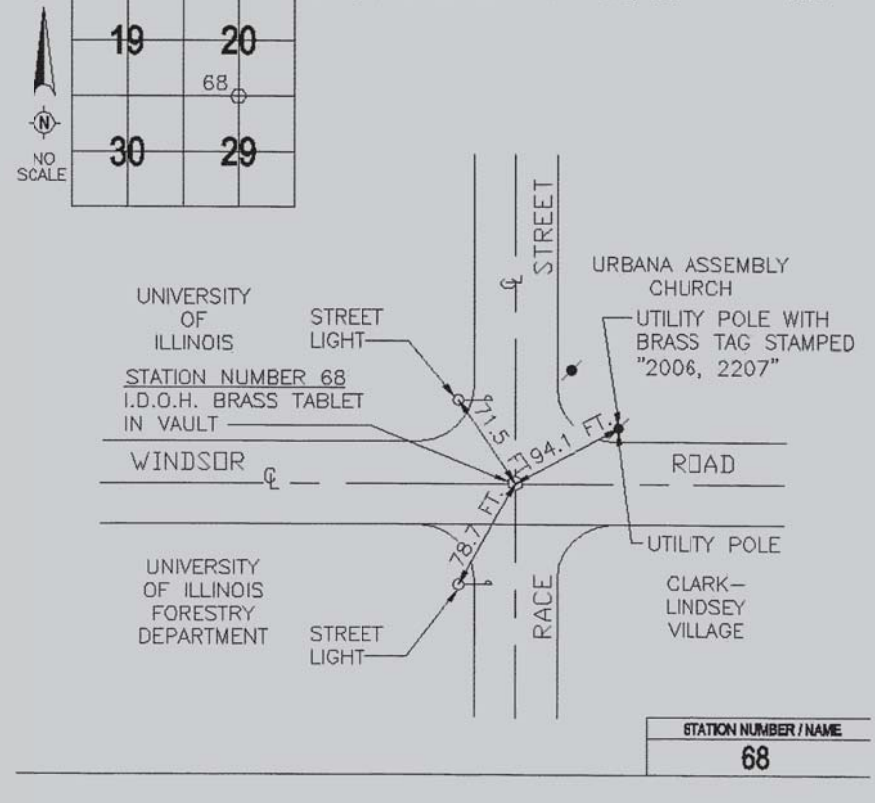


City of Urbana
Public Works Department
Engineering Division

STATION: 68
DATE: AUGUST 22, 1997

TYPE OF MONUMENT: BRASS TABLET IN VAULT	DATE ESTABLISHED: UNKNOWN	LOCATION: CENTERLINE OF RACE STREET AND CENTERLINE
MONUMENT MARKED OR STAMPED: STATE OF ILLINOIS DIVISION OF HIGHWAYS		
COORDINATES ESTABLISHED BY/DATE: BERNS, CLANCY AND ASSOCIATES JUNE, 1997		
WGS84 LATITUDE: 40°-05'-01.41175" (N)	WGS84 LONGITUDE: 88°-12'-33.90847" (W)	SEC 29 T 19 N R 9 E 3 P.M. CHAMPAIGN COUNTY, ILLINOIS
DATUM: NAD 83 ILLINOIS STATE PLANE EAST ZONE	VERTICAL DATUM: NAVD 1988	COMBINATION FACTOR: 0.99994543
NORTHING: 1,244,432.993 FT.	NORTHING: 379,303.935 M	COORDINATES DETERMINED BY: BCA/GPS
EASTING: 1,018,922.831 FT.	EASTING: 310,568.300 M	ELEVATION DETERMINED BY: BCA/GPS
ELEVATION: 746.8 FT.	ELEVATION: 227.62 M	

RECOVERED BY: BERNIS, CLANCY AND ASSOCIATES
DATE RECOVERED: JUNE, 1997
CONDITION: GOOD



STATION NUMBER / NAME
68

HORIZONTAL CONTROL DIAGRAM

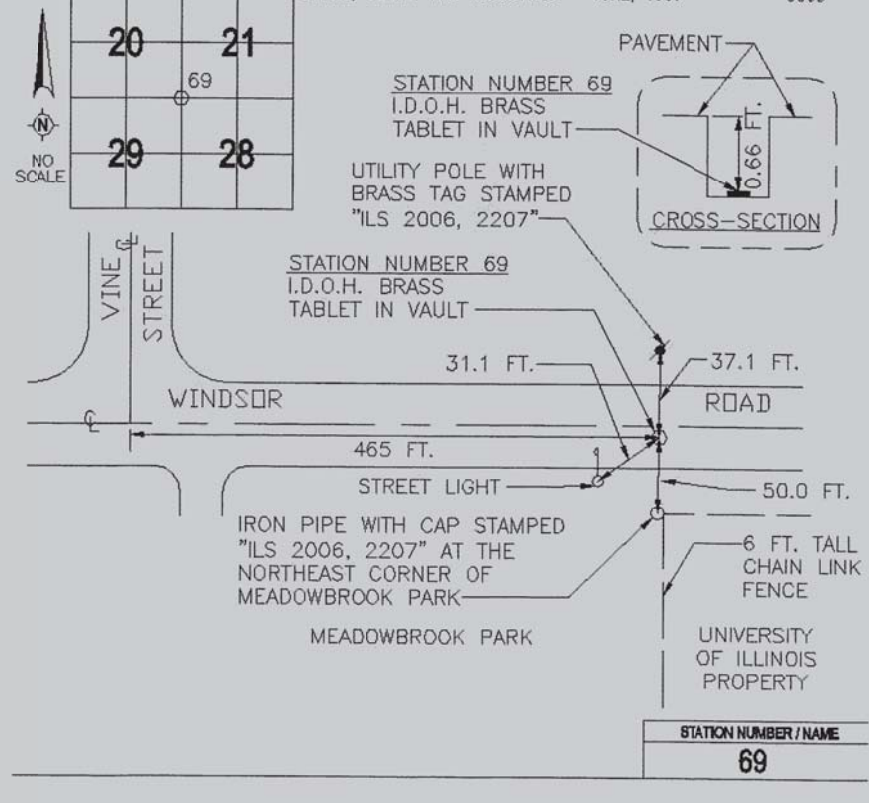


City of Urbana
Public Works Department
Engineering Division

STATION: 69
DATE: AUGUST 22, 1997

TYPE OF MONUMENT: BRASS TABLET	DATE ESTABLISHED: UNKNOWN	LOCATION: CENTERLINE OF WINDSOR ROAD 1/2 MILE EAST
MONUMENT MARKED OR STAMPED: STATE OF ILLINOIS DIVISION OF HIGHWAYS		
COORDINATES ESTABLISHED BY/DATE: BERNS, CLANCY AND ASSOCIATES JUNE, 1997		
WGS84 LATITUDE: 40°-05'-01.54601" (N)	WGS84 LONGITUDE: 88°-11'-59.85613" (W)	SEC 29 T 19 N R 9 E 3 P.M. CHAMPAIGN COUNTY, ILLINOIS
DATUM: NAD 83 ILLINOIS STATE PLANE EAST ZONE	VERTICAL DATUM: NAVD 1988	COMBINATION FACTOR: 0.99994630
NORTHING: 1,244,450.405 FT.	NORTHING: 379,309.242 M	COORDINATES DETERMINED BY: BCA/GPS
EASTING: 1,021,569.840 FT.	EASTING: 311,375.049 M	ELEVATION DETERMINED BY: BCA/GPS
ELEVATION: 733.2 FT.	ELEVATION: 223.48 M	

RECOVERED BY: BERNIS, CLANCY AND ASSOCIATES
DATE RECOVERED: JUNE, 1997
CONDITION: GOOD



STATION NUMBER / NAME
69

HORIZONTAL CONTROL DIAGRAM

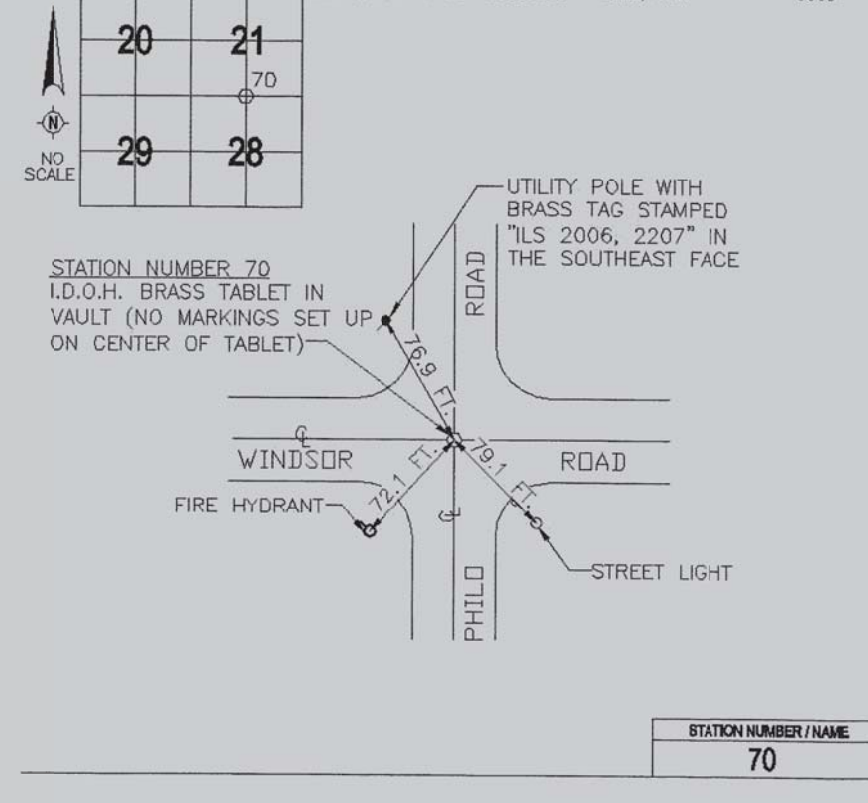


City of Urbana
Public Works Department
Engineering Division

STATION: 70
DATE: AUGUST 22, 1997

TYPE OF MONUMENT: BRASS TABLET IN VAULT	DATE ESTABLISHED: UNKNOWN	LOCATION: INTERSECTION OF WINDSOR ROAD AND PHILO ROAD
MONUMENT MARKED OR STAMPED: STATE OF ILLINOIS DIVISION OF HIGHWAYS		
COORDINATES ESTABLISHED BY/DATE: BERNS, CLANCY AND ASSOCIATES JUNE, 1997		
WGS84 LATITUDE: 40°-05'-01.68590" (N)	WGS84 LONGITUDE: 88°-11'-25.78579" (W)	SEC 28 T 19 N R 9 E 3 P.M. CHAMPAIGN COUNTY, ILLINOIS
DATUM: NAD 83 ILLINOIS STATE PLANE EAST ZONE	VERTICAL DATUM: NAVD 1988	COMBINATION FACTOR: 0.99994587
NORTHING: 1,244,468.669 FT.	NORTHING: 379,314.809 M	COORDINATES DETERMINED BY: BCA/GPS
EASTING: 1,024,217.768 FT.	EASTING: 312,182.200 M	ELEVATION DETERMINED BY: BCA/GPS
ELEVATION: 747.4 FT.	ELEVATION: 227.80 M	

RECOVERED BY: BERNIS, CLANCY AND ASSOCIATES
DATE RECOVERED: JUNE, 1997
CONDITION: GOOD



STATION NUMBER / NAME
70

DESIGNED	BKC	4/29/14
DRAWN	BKC	4/29/14
REVIEWED	MH	4/29/14

FILE NAME =	USER NAME = johns00944	DESIGNED - BKC	REVISED -
D513L0201-sht-ATB002		DRAWN - BKC	REVISED -
MODEL NAME =	PLOT SCALE = 0.1667' / 1" =	CHECKED - MH	REVISED -
Geom Sheet 1	PLOT DATE = 06/12/2014	DATE - 05-03-2014	REVISED -

**STATE OF ILLINOIS
DEPARTMENT OF TRANSPORTATION**

**ALIGNMENT, TIES AND BENCHMARKS
WINDSOR ROAD**

SCALE: SHEET 2 OF 2 SHEETS STA. TO STA.

F.A.P. RTE.	SECTION	COUNTY	TOTAL SHEETS	SHEET NO.
7145	13-00540-00-PV	CHAMPAIGN	80	18
	13L0201	CONTRACT NO.	91515	
ILLINOIS FED. AID PROJECT				