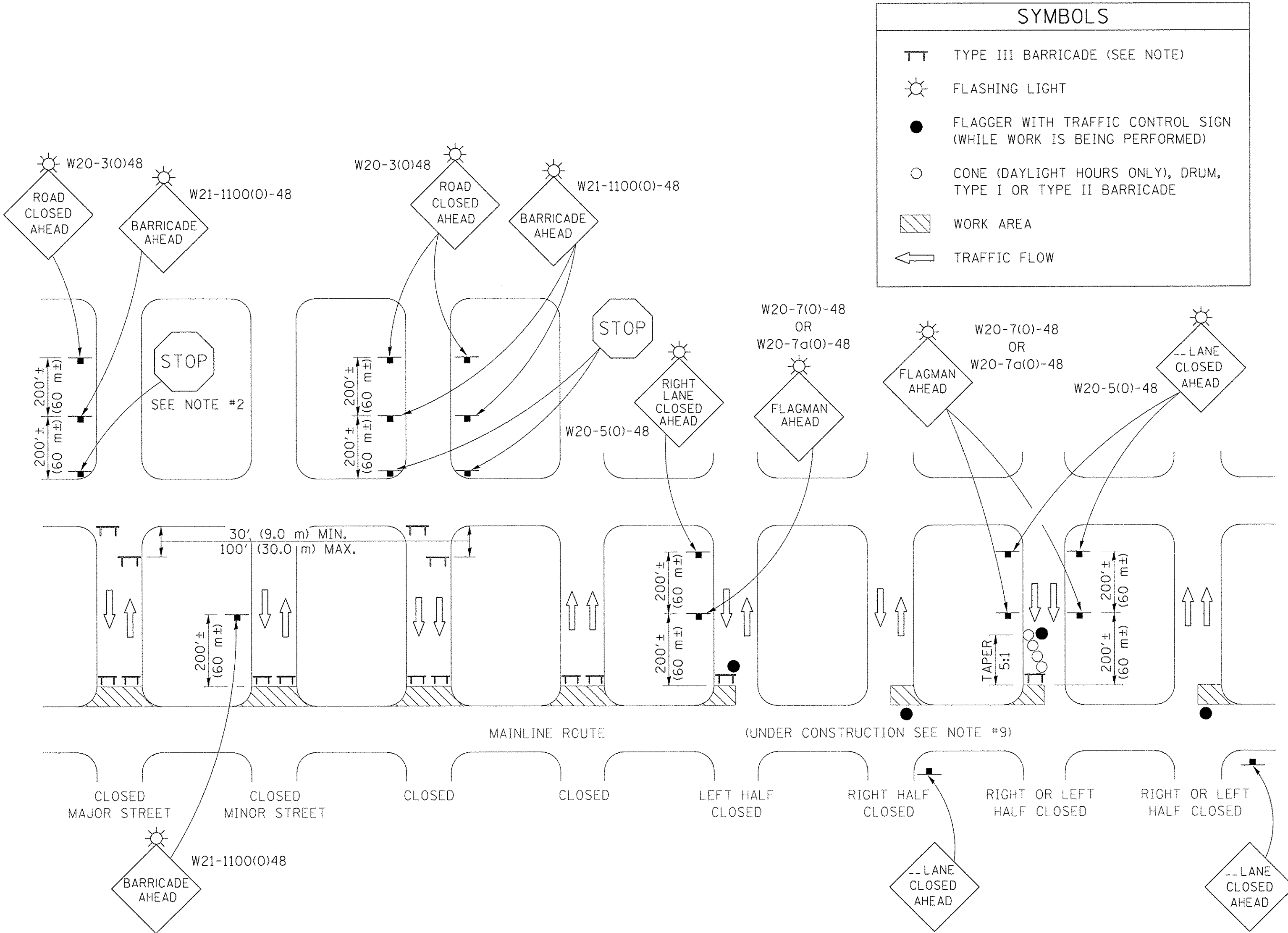
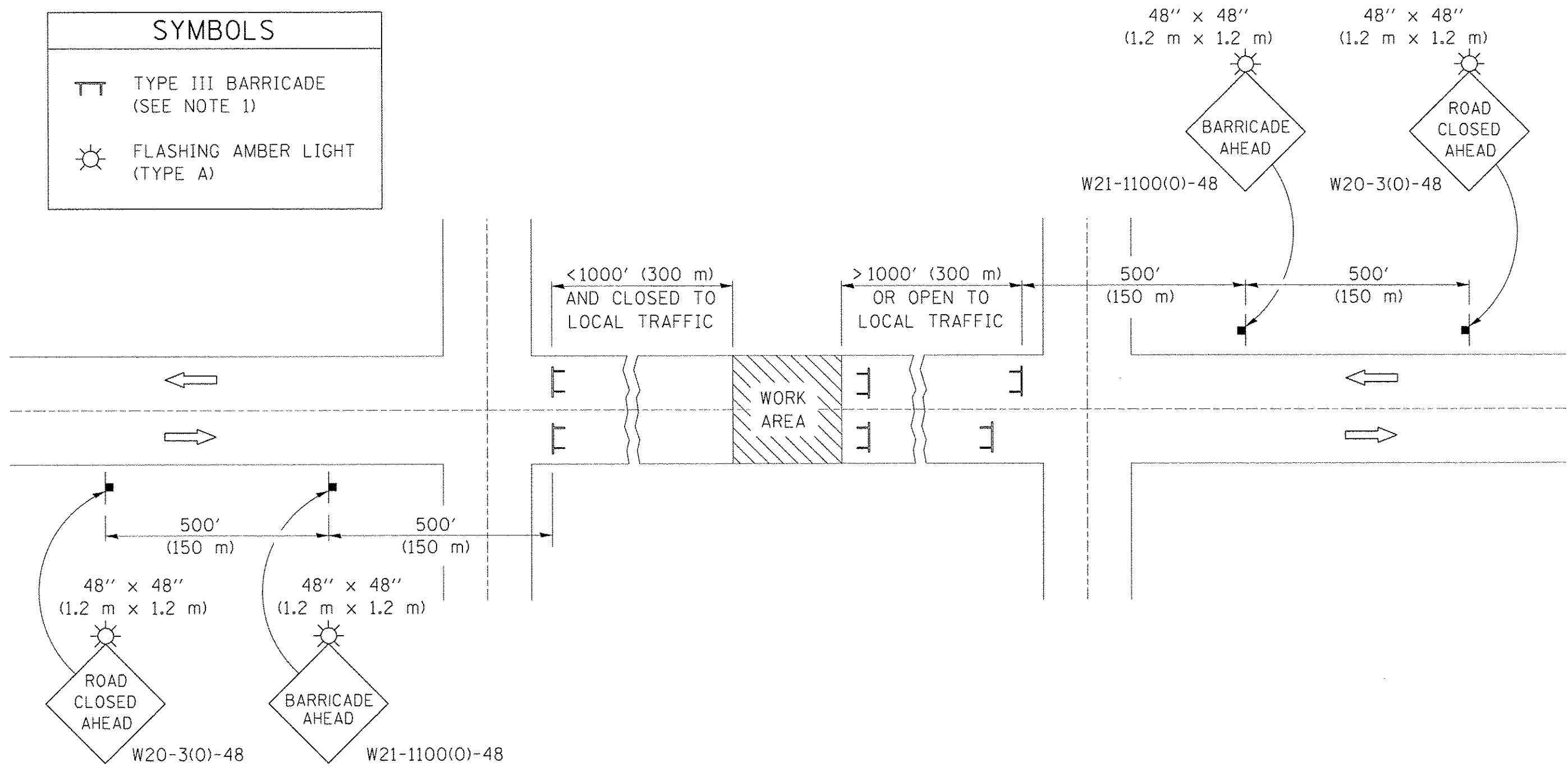


ROAD CLOSURE

SIDEROAD / STREET CLOSURE



GENERAL NOTES

- TYPE III BARRICADES SHALL BE AS SHOWN ON STANDARD 701901 "TYPICAL APPLICATIONS OF TYPE III BARRICADES CLOSING A ROAD". EACH TYPE III BARRICADE SHALL HAVE TWO FLASHING AMBER LIGHTS MOUNTED ABOVE IT.
- IF THE ROAD IS OPEN TO LOCAL TRAFFIC OR EXCEEDS 1000' (300 m), ANOTHER SET OF TYPE III BARRICADES, EQUIPPED AS IN NOTE 1 ABOVE, SHALL BE PLACED AT EACH END OF THE WORK AREA.
- WHEN A STOP CONDITION EXISTS, NO SIGNS ARE REQUIRED IN ADVANCE OF THE "STOP" SIGN WHEN THE ROAD IS CLOSED WITHIN 100' (30 m) OF THE INTERSECTION.
- STANDARD 701901 SHALL APPLY FOR THE PLACEMENT & DESIGN OF TYPE III BARRICADES.
- IF A TYPE III BARRICADE WITH AN ATTACHED SIGN PANEL WHICH MEETS NCHRP 350 IS NOT AVAILABLE, THE SIGNS MAY BE MOUNTED ON AN NCHRP 350 TEMPORARY SIGN SUPPORT DIRECTLY IN FRONT OF THE BARRICADE.
- REFLECTORIZED STRIPING SHALL APPEAR ON BOTH SIDES OF THE TYPE III BARRICADES IF ROAD IS OPEN TO LOCAL TRAFFIC.
- ALL SIGNS SHALL BE POST MOUNTED IF THE CLOSURE TIME EXCEEDS FOUR DAYS.
- A MINIMUM OF TWO FLASHING LIGHTS SHALL BE USED AT NIGHT ON EACH APPROACH IN ADVANCE OF THE WORK AREA. FLASHING LIGHTS SHALL BE INSTALLED ABOVE THE FIRST TWO SIGNS IN THE SERIES.
- LONGITUDINAL DIMENSIONS MAY BE ADJUSTED SLIGHTLY TO FIT FIELD CONDITIONS.
- FORMS BT. 725 AND BT. 726 ARE REQUIRED.
- WHEN A SIDEROAD INTERSECTS THE HIGHWAY ON WHICH WORK IS BEING PERFORMED, ADDITIONAL TRAFFIC DEVICES SHALL BE ERECTED AND PROVIDED AS DIRECTED BY THE ENGINEER.
- AN ADDITIONAL SIGN MAY BE REQUIRED AT A MAJOR INTERSECTING ROAD IN ADVANCE OF THE CLOSURE. THE ADDITIONAL SIGN SHALL GIVE THE DISTANCE TO THE BARRICADE IN MILES OR FRACTIONS OF A MILE.

GENERAL NOTES

- TYPE III BARRICADES SHALL BE AS SHOWN ON "TYPICAL APPLICATIONS OF TYPE III BARRICADES CLOSING A ROAD". EACH TYPE III BARRICADE SHALL HAVE TWO FLASHING AMBER LIGHTS MOUNTED ABOVE IT.
- WHERE A STOP CONDITION EXISTS, AS SHOWN ABOVE, WARNING SIGNS MAY BE OMITTED IN ADVANCE OF THE "STOP" SIGN.
- STANDARD 701901 SHALL APPLY FOR THE PLACEMENT & MANUFACTURE OF TYPE III BARRICADES.
- ALL SIGNS SHALL BE POST MOUNTED IF THE CLOSURE TIME EXCEEDS FOUR DAYS.
- ONE FLASHING LIGHT IS REQUIRED ABOVE EACH ADVANCE WARNING SIGN DURING HOURS OF DARKNESS.
- LONGITUDINAL DIMENSIONS MAY BE ADJUSTED SLIGHTLY TO FIT FIELD CONDITIONS.
- FORMS BT 725 AND BT 726 ARE REQUIRED.
- THE MAINLINE ROUTE TEMPORARY TRAFFIC CONTROL SHALL BE IN ACCORDANCE WITH THE PLANS, SPECIAL PROVISIONS AND STANDARD SPECIFICATIONS.
- ALL FLAGGERS REQUIRED AT SIDE ROADS AND ENTRANCES REMAINING OPEN TO TRAFFIC AND/OR ADDITIONAL BARRICADES REQUIRED BY THE ENGINEER TO CLOSE SIDE ROADS AND ENTRANCES WILL BE PAID FOR ACCORDING TO ARTICLE 109.04.

Note: All dimensions are in INCHES (millimeters) unless otherwise shown.

|          |        |
|----------|--------|
| LAYOUT   | 2/4/16 |
| DRAWN    | RLA    |
| REVIEWED |        |

FILE NAME = Z:\Plans\sheets\Project1\P1-sht-standard02.dgn  
PLOT DATE = 8/25/2016 12:22:33 PM

DESIGNED -  
DRAWN - RLA  
CHECKED -  
DATE - 8/26/2016

REVISED -  
REVISED -  
REVISED -  
REVISED -

STATE OF ILLINOIS  
DEPARTMENT OF TRANSPORTATION

TRAFFIC CONTROL & PROTECTION DEVICES  
(ROAD & SIDE ROAD CLOSURES)

SCALE: SHEET NO. OF SHEETS STA. TO STA.

DISTRICT 5 DETAIL NO. 70200000

| F.A.U.<br>RTE.      | SECTION        | COUNTY             | TOTAL<br>SHEETS                | SHEET<br>NO. |
|---------------------|----------------|--------------------|--------------------------------|--------------|
| 7126                | 15-00304-01-PV | CHAMPAIGN          | 236                            | 231          |
| MCORE PROJECT 1     |                | CONTRACT NO. 91539 |                                |              |
| JOB NO. C-95-305-16 |                | ILLINOIS           | FED. AID PROJECT TIG-5181(057) |              |

SIGN R7-I 101

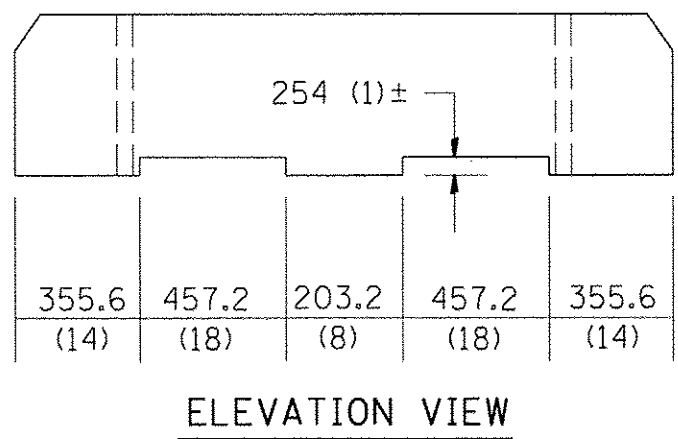
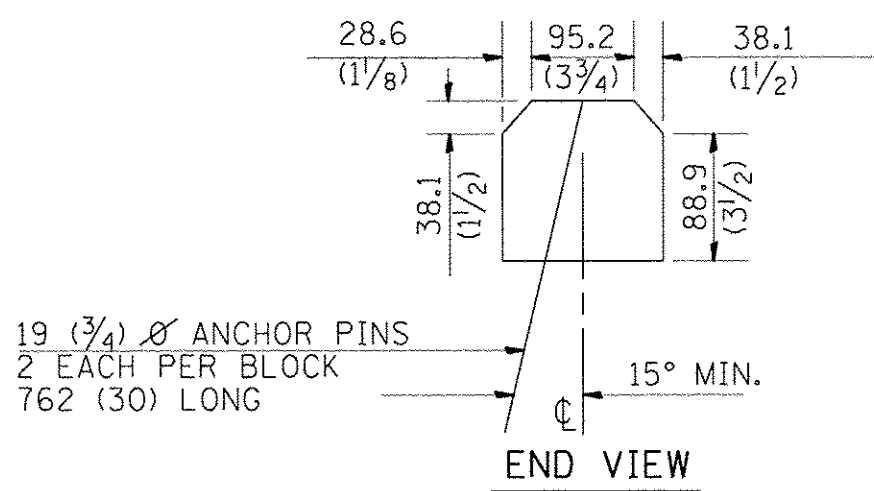
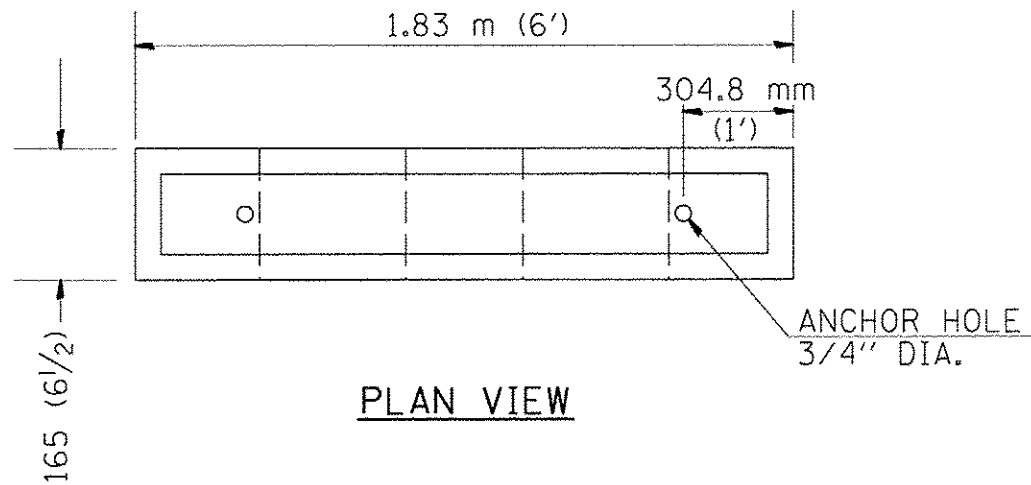


COLOR: LEGEND AND BORDER GREEN NON-REFLECTORIZED  
BACKGROUND WHITE REFLECTORIZED

| SIGN SIZE                 | DIMENSIONS    |              |               |                |                |               |                |                |
|---------------------------|---------------|--------------|---------------|----------------|----------------|---------------|----------------|----------------|
|                           | A             | B            | C             | D              | E              | F             | G              | H              |
| 152.4 x 304.8<br>(6 x 12) | 340.8<br>(12) | 152.4<br>(6) | 38.1<br>(1.5) | 114.3<br>(4.5) | 29.2<br>(1.15) | 86.4<br>(3.4) | 116.8<br>(4.6) | 101.6<br>(4.0) |

| SIGN SIZE                 | SERIES Lines | Margin     | Border     | BLK Std |
|---------------------------|--------------|------------|------------|---------|
| 152.4 x 304.8<br>(6 x 12) | 1/3A         | 9.5 (0.37) | 9.5 (0.37) | B5-126  |

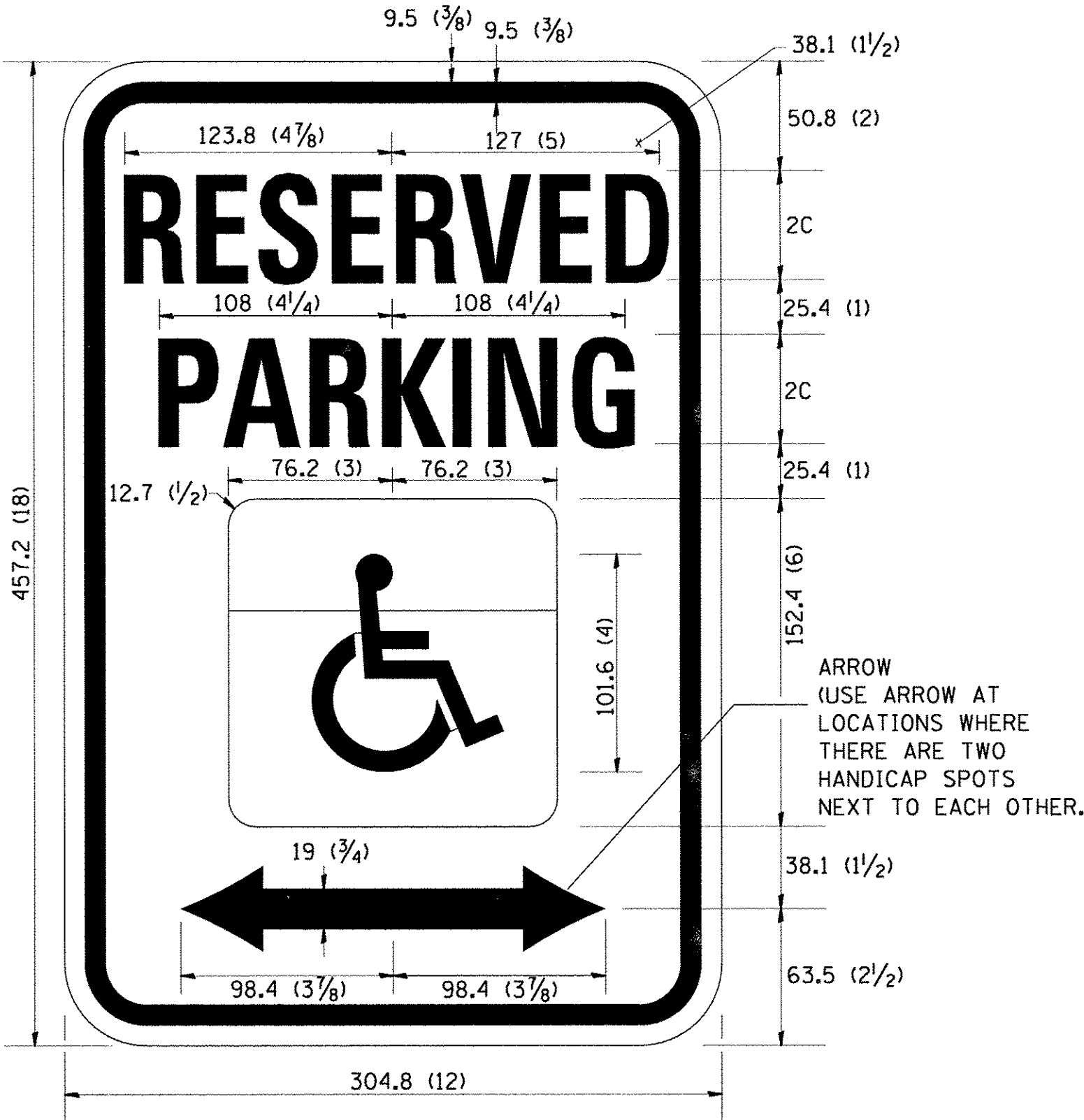
To be used with R7-8  
• \$ = SERIES 3A "S"



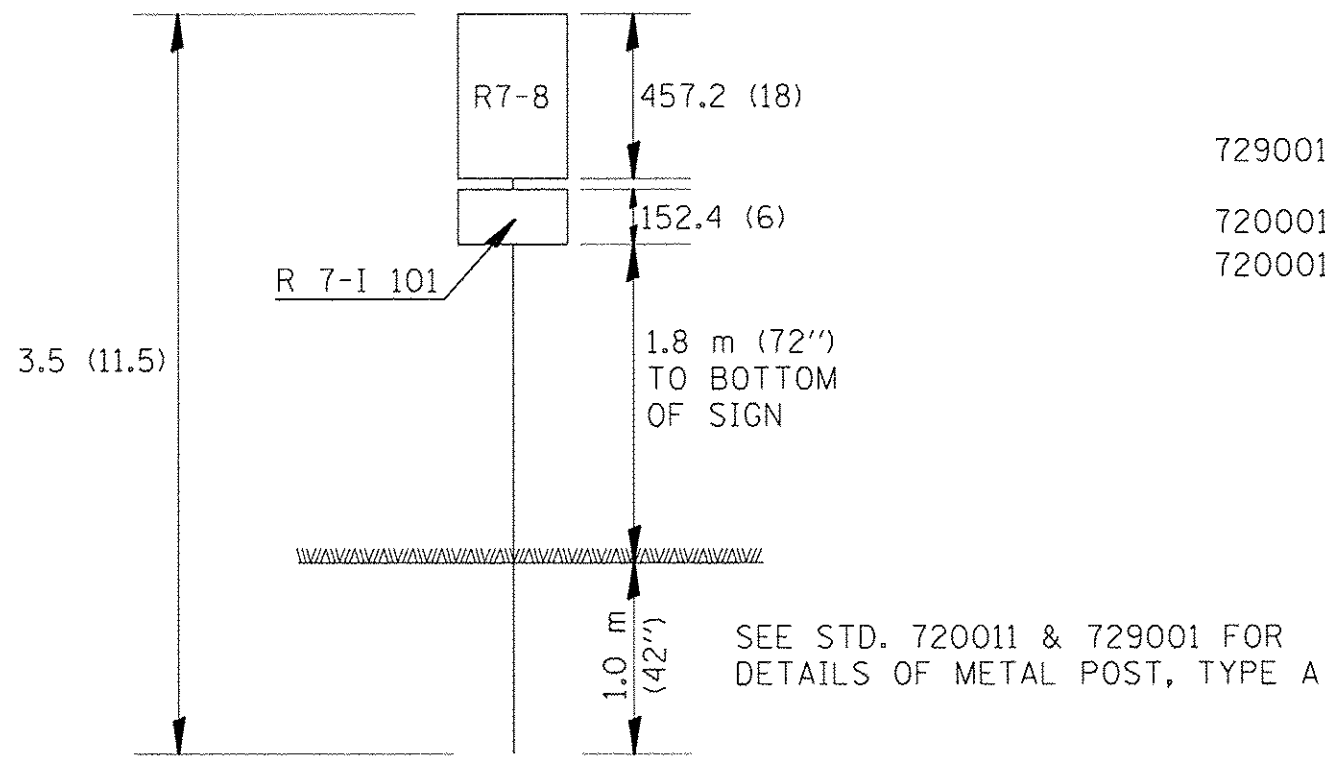
NOTE: NOMINAL DIMENSIONS OF BLOCKS MAY VARY  
CLASS P.C. CONCRETE SHALL BE USED THROUGHOUT.

BUMPER BLOCK DETAIL

SIGN R7-8



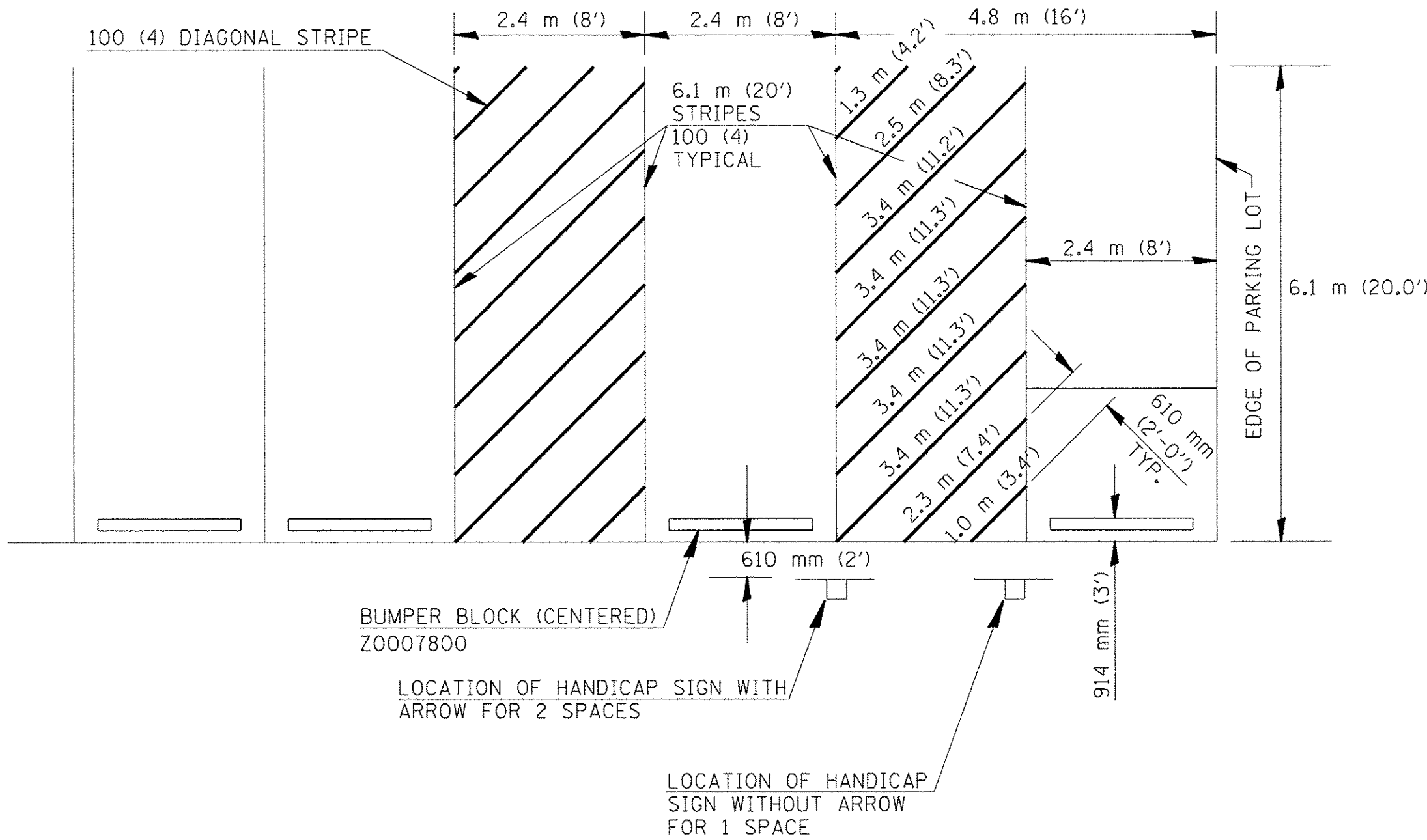
COLORS  
LEGEND AND BORDER - GREEN  
WHITE SYMBOL ON BLUE BACKGROUND  
BACKGROUND - WHITE



ESTIMATED QUANTITY

|  |                                  |
|--|----------------------------------|
| 72900110 METAL POST - TYPE A = 3.5 m (11.5') |                                  |
| 72000100 SIGN PANEL R 7-I 101                | .046 m <sup>2</sup> (0.5 SQ.FT.) |
| 72000100 SIGN PANEL R 7-8                    | .139 m <sup>2</sup> (1.5 SQ.FT.) |
| TOTAL =                                      | .185 m <sup>2</sup> (2.0 SQ.FT.) |

SIGN POST DETAILS



THIS DRAWING HAS NO SCALE.

ESTIMATED QUANTITY OF PAVEMENT  
MARKING-LINE 100 mm (4") (FOR 1 SPACE)  
TOTAL DIAGONALS = 24.4 m (80')

SEE DETAIL FOR HANDICAP SIGN.

DETAIL OF PARKING SPACES

Note: All dimensions are in INCHES  
(millimeters) unless otherwise shown.

DISTRICT 5 DETAIL NO. 72000100

FILE NAME =  
Z:\Plans\sheets\Project1\P1-sht-standard03.dgn

PLOT DATE =  
8/25/2016 12:22:35 PM

DESIGNED -  
DRAWN - RLA  
CHECKED -  
DATE - 8/26/2016

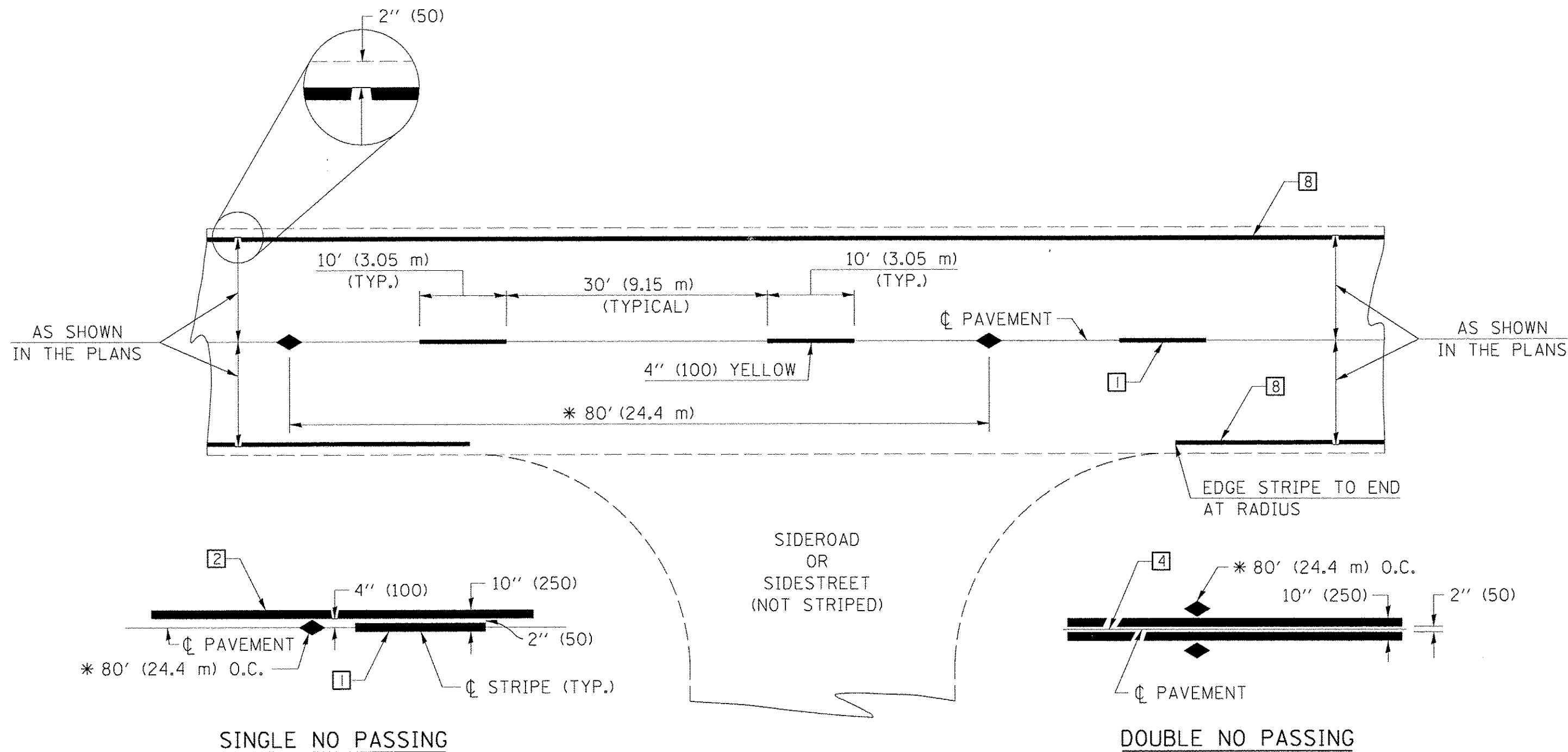
REVISED -  
REVISED -  
REVISED -  
REVISED -

STATE OF ILLINOIS  
DEPARTMENT OF TRANSPORTATION

DISABLED PARKING

SCALE: SHEET NO. OF SHEETS STA. TO STA.

| F.A.I.J. RTE.       | SECTION        | COUNTY    | TOTAL SHEETS                            | SHEET NO. |
|---------------------|----------------|-----------|---|-----------|
| 7126                | 15-00304-01-PV | CHAMPAIGN | 236                                     | 232       |
| MCORE PROJECT 1     |                |           | CONTRACT NO. 91539                      |           |
| JOB NO. C-95-305-16 |                |           | ILLINOIS FED. AID PROJECT TIG-5181(057) |           |



## TWO LANE/TWO WAY

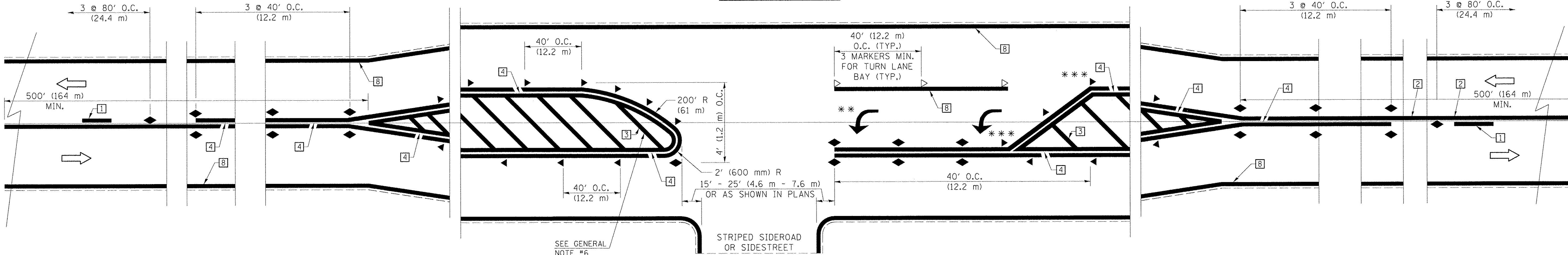
## TYPICAL PAVEMENT MARKING LEGEND

- 1 4" (100) SKIP-DASH (YELLOW)
  - 2 4" (100) SOLID (YELLOW)
  - 3 12" (300) DIAGONAL (YELLOW)
  - 4 4" (100) DOUBLE YELLOW (NARROW)
  - 5 RESERVED
  - 6 RESERVED
  - 7 4" (100) SKIP-DASH (WHITE)
  - 8 4" (100) SOLID (WHITE)
  - 9 12" (300) DIAGONAL (WHITE)
  - 10 6" (150) SOLID (WHITE)
  - 11 24" (600) STOP BAR (WHITE)
  - 12 8" (200) SOLID (WHITE)
  - 13 4" (100) LANE LINE EXTENSIONS (WHITE)
  - 14 4" (100) PARKING WHITE
- 

## TYPICAL PAVEMENT MARKERS LEGEND

- ◆ TWO-WAY AMBER MARKER
- ▶ ONE-WAY AMBER MARKER
- ▷ ONE-WAY CRYSTAL MARKER

## RURAL LEFT TURN



\*\*\* REDUCE SPACING IF NECESSARY TO ASSURE MARKERS AT CORNER POINTS.

\*\* TURN ARROWS SHALL BE PLACED AS SHOWN ON SHEET #2.

Note: All dimensions are in INCHES (millimeters) unless otherwise shown.

|         |        |
|---------|--------|
| LAYOUT  | 2/4/16 |
| DRAWN   | RLA    |
| REVISED |        |

FILE NAME = Z:\Plans\Sheets\Project1\P1-sht-standard04.dgn

PLOT DATE = 8/25/2016 12:22:39 PM

DESIGNED - RLA

DRAWN - RLA

CHECKED -

DATE - 8/26/2016

REVISED -

REVISED -

REVISED -

REVISED -

STATE OF ILLINOIS  
DEPARTMENT OF TRANSPORTATION

PAVEMENT MARKING AND MARKERS  
(RURAL & URBAN APPLICATION)

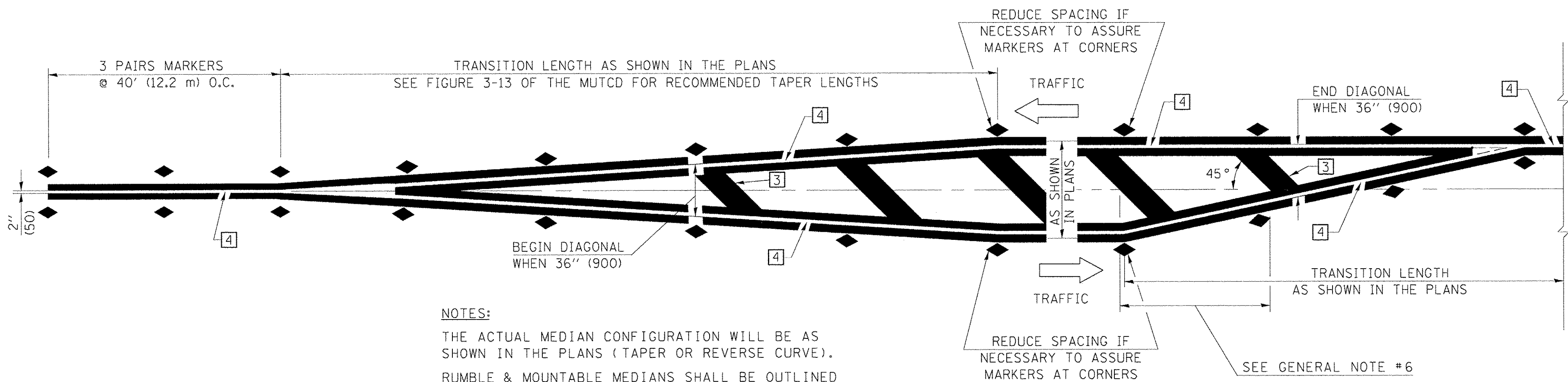
SCALE: SHEET NO. OF SHEETS STA. TO STA.

## DISTRICT 5 DETAIL NO. 7800AAAA

| F.A.U. RTE.         | SECTION        | COUNTY    | TOTAL SHEETS                          | SHEET NO. |
|---------------------|----------------|-----------|---------------------------------------|-----------|
| 7126                | 15-00304-01-PV | CHAMPAIGN | 236                                   | 233       |
| MCORE PROJECT 1     |                |           | CONTRACT NO. 91539                    |           |
| JOB NO. C-95-305-16 |                |           | ILLINOIS FED. AID PROJECT TIG-5181057 |           |





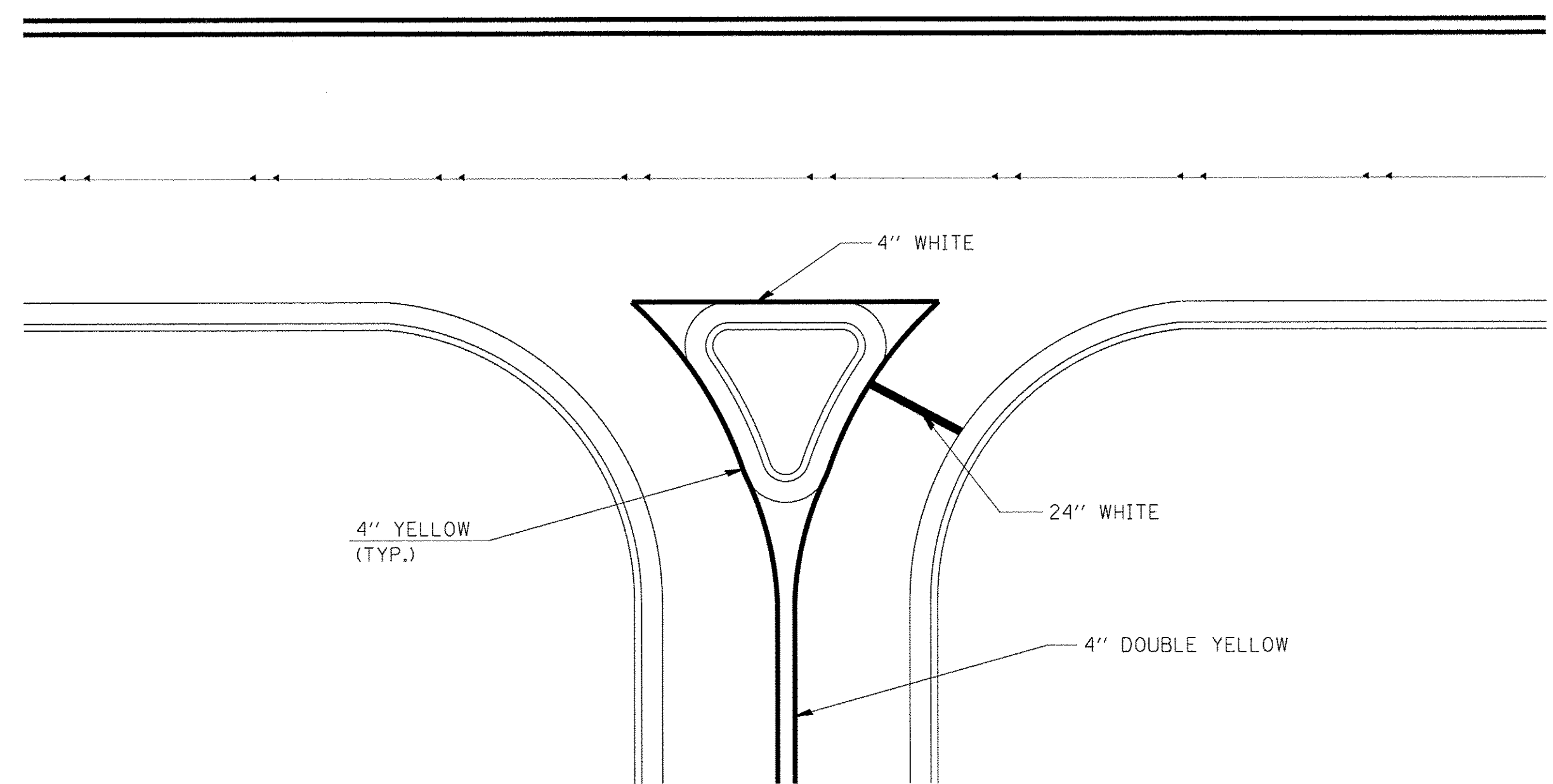


NOTES:  
THE ACTUAL MEDIAN CONFIGURATION WILL BE AS SHOWN IN THE PLANS (TAPER OR REVERSE CURVE).  
RUMBLE & MOUNTABLE MEDIANS SHALL BE OUTLINED WITH [2].

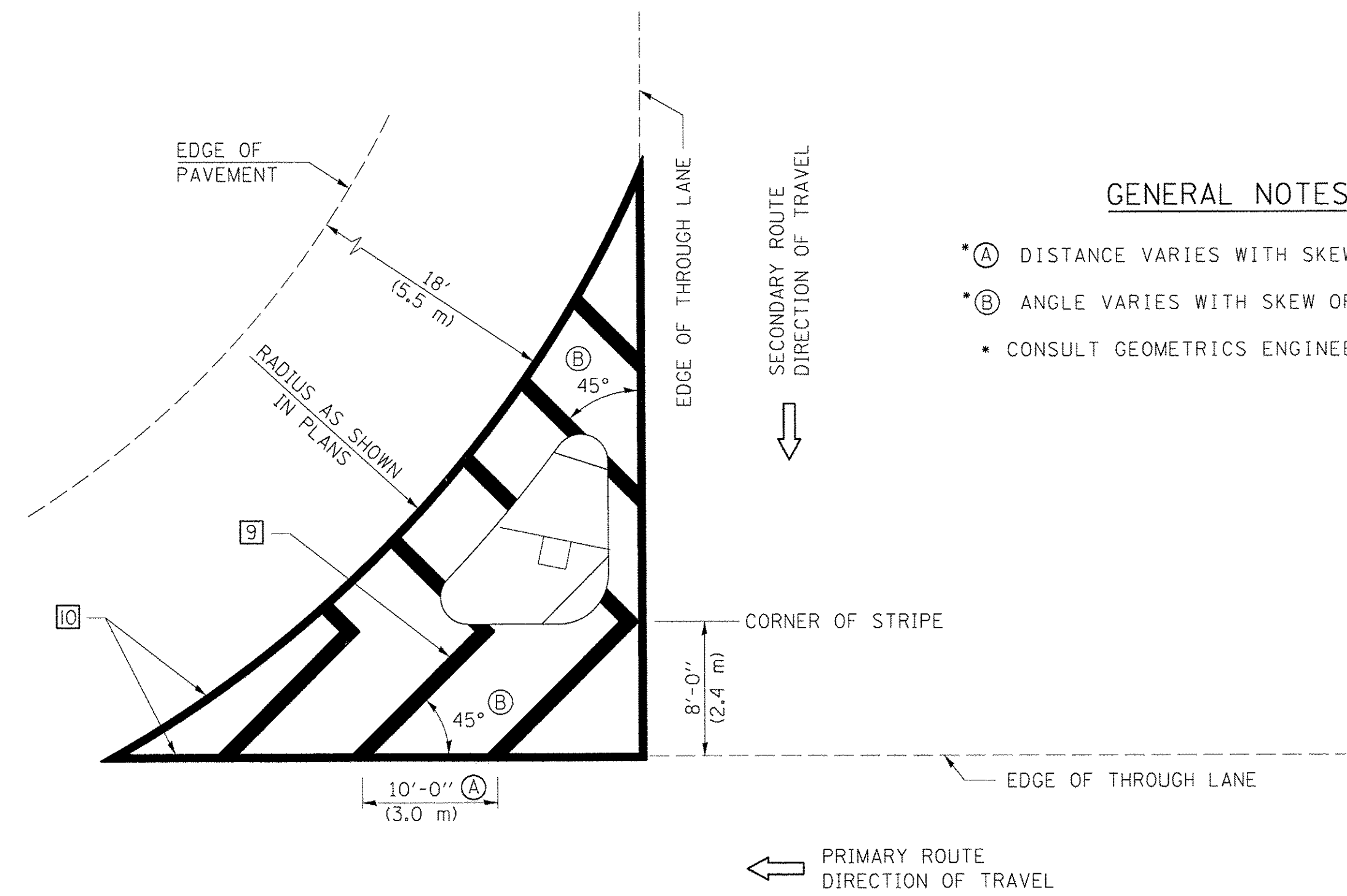
TYPICAL MEDIAN TRANSITIONS

GENERAL NOTES

1. WHEN MEDIANS ARE PRESENT, PAVEMENT MARKINGS ARE TO BE PLACED ADJACENT TO MEDIANS.
2. SOME OF THE INFORMATION INCLUDED WITH THIS DETAIL MAY NOT BE APPLICABLE TO THIS IMPROVEMENT.
3. PAVEMENT MARKINGS ARE TO BE EXTENDED THROUGH OMISSIONS WHEN APPLICABLE.
4. A STRIPING KEY IS AVAILABLE ELSEWHERE AND SHALL BE SHOWN WHERE THE QUANTITIES ARE LISTED.
5. FINAL PAVEMENT MARKINGS SHALL BE IN PLACE PRIOR TO PLACING ANY RAISED REFLECTIVE PAVEMENT MARKERS.
6. THE FOLLOWING CRITERIA SHALL BE USED FOR SELECTING THE DIAGONAL PAVEMENT MARKING SPACING,  
< 30 MPH USE 15' (< 50 km/h USE 4.5 m)  
30-45 MPH USE 20' (50-75 km/h USE 6.0 m)  
> 45 MPH USE 30' (> 75 km/h USE 9.0 m)



RIGHT IN - RIGHT OUT ACCESS



ISLAND

GENERAL NOTES

- \*A DISTANCE VARIES WITH SKEW OF INTERSECTION.
- \*B ANGLE VARIES WITH SKEW OF INTERSECTION.
- \* CONSULT GEOMETRICS ENGINEER

Note: All dimensions are in INCHES (millimeters) unless otherwise shown.

|          |        |
|----------|--------|
| LAYOUT   | 2/4/16 |
| DRAWN    | RLA    |
| REVIEWED |        |

FILE NAME =  
Z:\Plans\sheets\Project1\P1-sht-standard06.dgn  
PLOT DATE =  
8/25/2016 12:22:46 PM

DESIGNED -  
DRAWN - RLA  
CHECKED -  
DATE - 8/26/2016

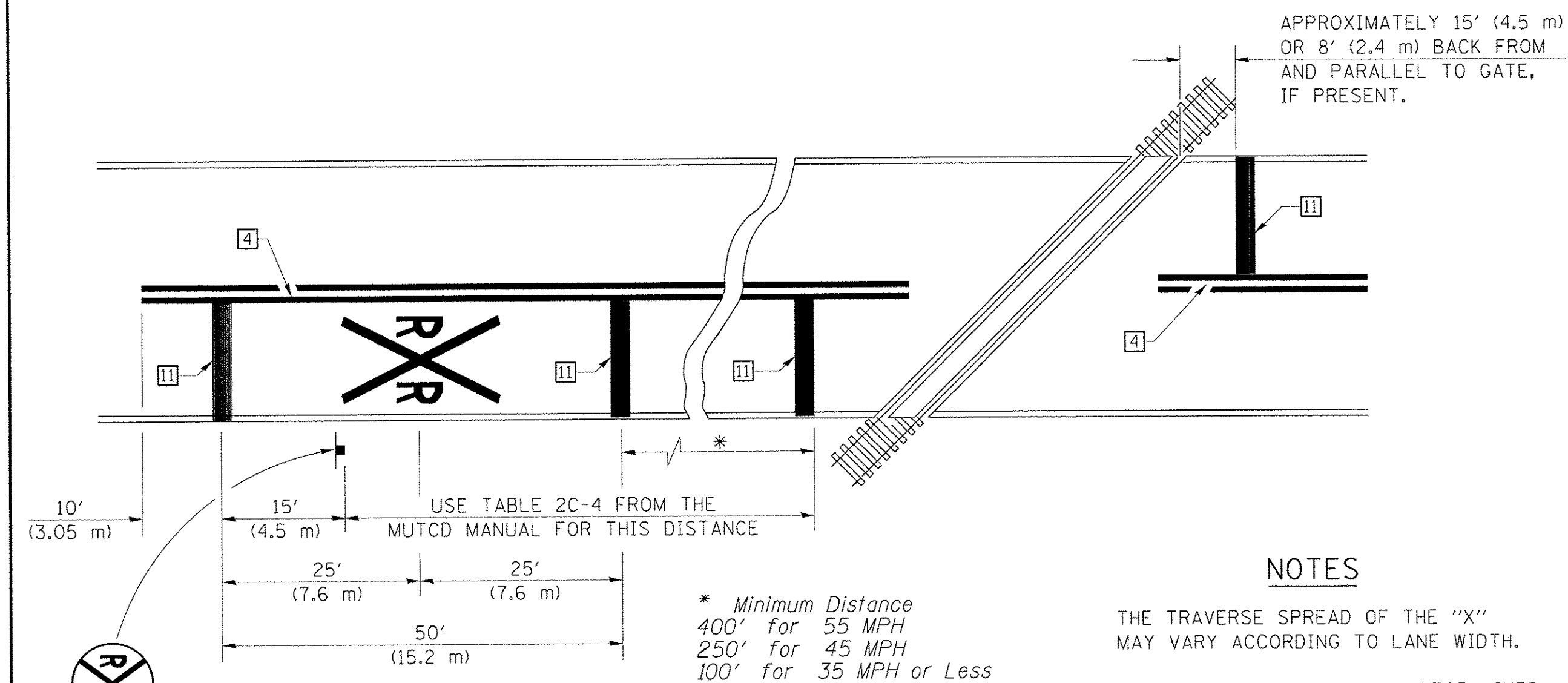
REVISED -  
REVISED -  
REVISED -  
REVISED -

STATE OF ILLINOIS  
DEPARTMENT OF TRANSPORTATION

PAVEMENT MARKING AND MARKERS  
(RURAL & URBAN APPLICATION)

SCALE: SHEET NO. OF SHEETS STA. TO STA.

| DISTRICT 5 DETAIL NO. 7800AAAA |                |          |                    |                 |              |
|--------------------------------|----------------|----------|--------------------|-----------------|--------------|
| F.A.U.<br>RTE.                 | SECTION        |          | COUNTY             | TOTAL<br>SHEETS | SHEET<br>NO. |
| 7126                           | 15-00304-01-PV |          | CHAMPAIGN          | 236             | 235          |
| MCORE PROJECT 1                |                |          | CONTRACT NO. 91539 |                 |              |
| JOB NO. C-95-305-16            |                | ILLINOIS | FED. AID PROJECT   | T16-5181057     |              |



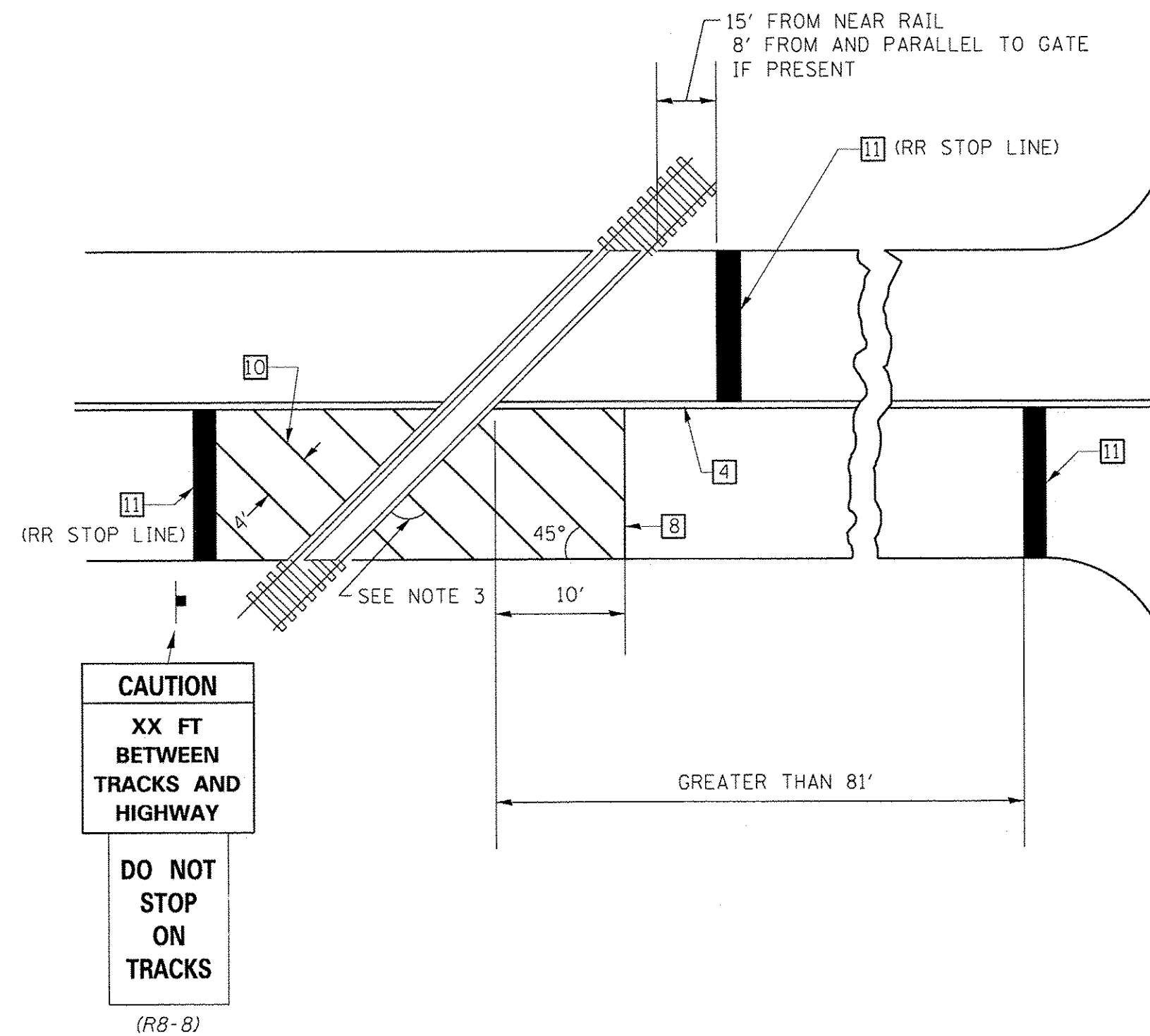
PAVEMENT MARKINGS AT  
RAILROAD-HIGHWAY GRADE CROSSING

#### NOTES

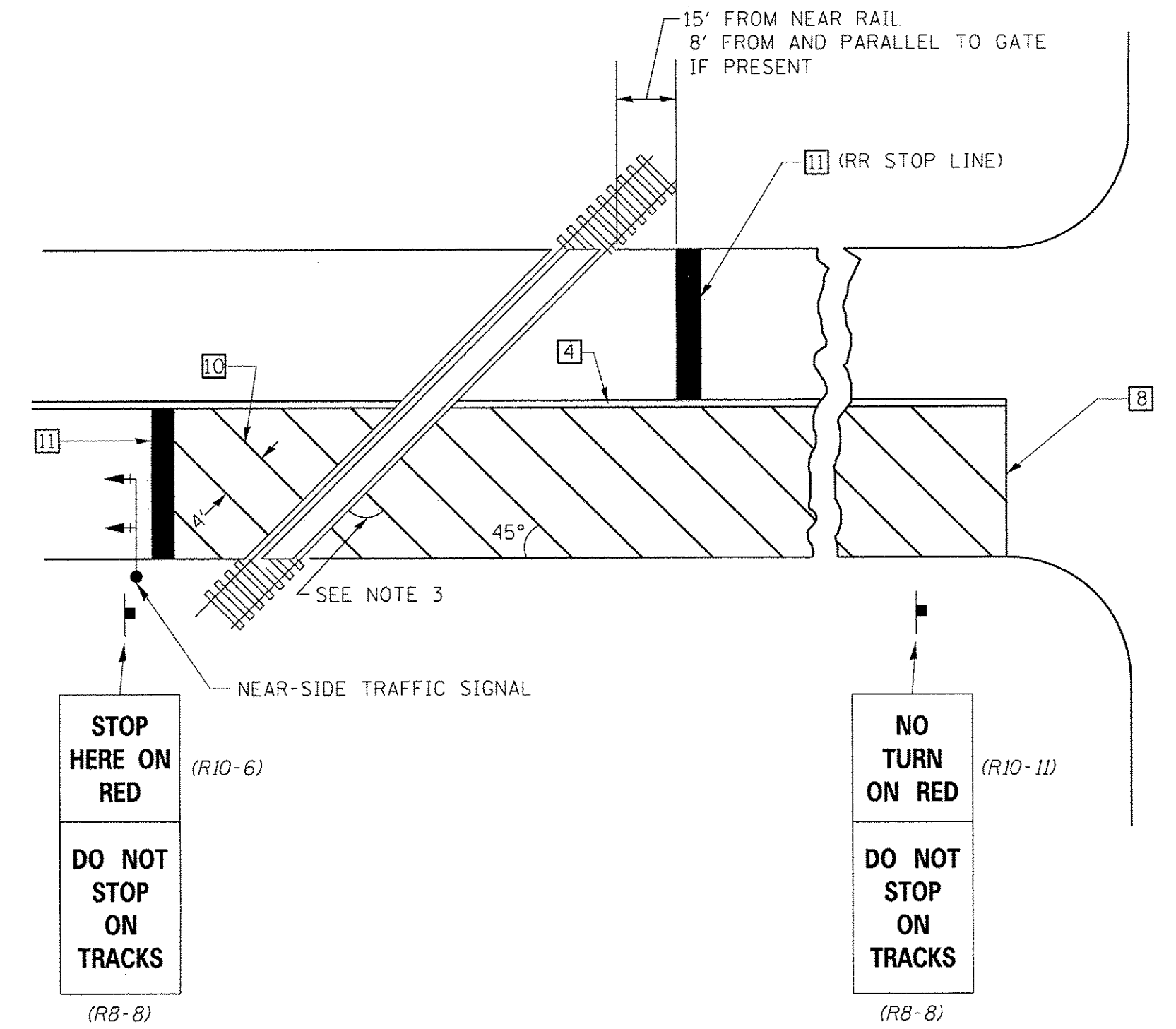
THE TRAVERSE SPREAD OF THE "X" MAY VARY ACCORDING TO LANE WIDTH.

ON MULTI-LANE ROADS, THE STOP LINES SHALL EXTEND ACROSS ALL APPROACH LANES AND SEPARATE RXX SYMBOLS SHALL BE PLACED ADJACENT TO EACH OTHER IN EACH LANE.

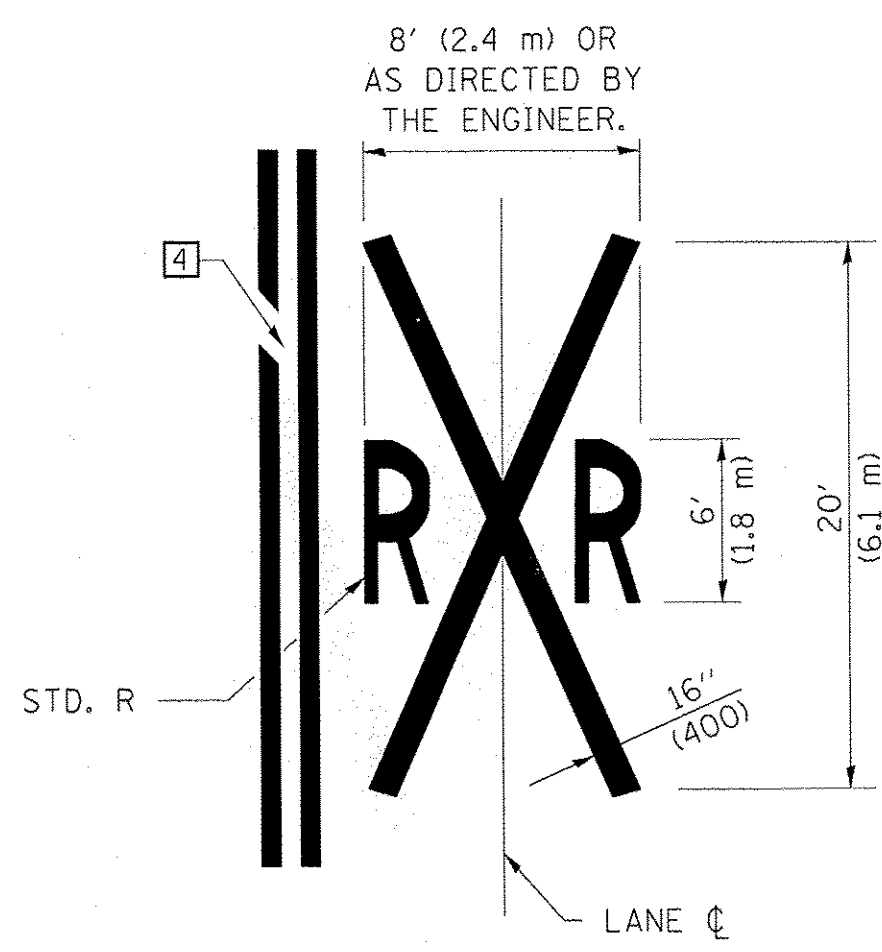
WHEN THE PAVEMENT MARKING SYMBOL IS USED, A PORTION OF THE SYMBOL SHOULD BE LOCATED DIRECTLY ADJACENT TO THE ADVANCE WARNING SIGN (W10-1) AS PLACED BY TABLE II-1, CONDITION B OF THE MUTCD.



RAILROAD CROSSING WITH INTERCONNECT AND PRE-SIGNALS



SUPPLEMENTAL PAVEMENT MARKING TREATMENT FOR  
RAILROAD-HIGHWAY GRADE CROSSING



#### GENERAL NOTES

- SUPPLEMENTAL PAVEMENT MARKINGS TO BE INSTALLED ONLY ON APPROACHES TO INTERSECTIONS CONTROLLED BY TRAFFIC SIGNALS WHICH ARE INTERCONNECTED WITH THE RAILROAD WARNING SIGNALS.
- EXTEND PAVEMENT MARKINGS TO THE INTERSECTION ONLY WHERE NEAR-SIDE TRAFFIC SIGNALS ARE USED.
- WHERE THE ANGLE BETWEEN THE DIAGONAL PAVEMENT MARKINGS AND THE TRACK WOULD BE LESS THAN 20°, THE PAVEMENT MARKINGS SHOULD BE PLACED IN THE OPPOSITE DIRECTION FROM THAT SHOWN.

Note: All dimensions are in INCHES (millimeters) unless otherwise shown.

|          |       |        |
|----------|-------|--------|
| LAYOUT   | DRAWN | 2/4/16 |
| REVIEWED | RLA   |        |

|  |                  |           |
|--|------------------|-----------|
| FILE NAME =                                    | DESIGNED -       | REVISED - |
| Z:\Plans\Sheets\Project1\P1-sht-standard07.dgn | DRAWN - RLA      | REVISED - |
| PLOT DATE =                                    | CHECKED -        | REVISED - |
| 8/25/2016 12:22:51 PM                          | DATE - 8/26/2016 | REVISED - |

|   |
|---|
| STATE OF ILLINOIS<br>DEPARTMENT OF TRANSPORTATION |
|---|

|   |           |    |        |              |
|---|-----------|----|--------|--------------|
| PAVEMENT MARKING AND MARKERS<br>(RURAL & URBAN APPLICATION) |           |    |        |              |
| SCALE:  | SHEET NO. | OF | SHEETS | STA. TO STA. |

|   |                |           |                    |           |
|---|----------------|-----------|--------------------|-----------|
| DISTRICT 5 DETAIL NO. 7800AAAA                              |                |           |                    |           |
| F.A.U. RTE.   | SECTION        | COUNTY    | TOTAL SHEETS       | SHEET NO. |
| 7126  | 15-00304-01-PV | CHAMPAIGN | 236                | 236       |
| MCORE PROJECT 1   |                |           | CONTRACT NO. 91539 |           |
| JOB NO. C-95-305-16 ILLINOIS FED. AID PROJECT TIG-5181(057) |                |           |                    |           |