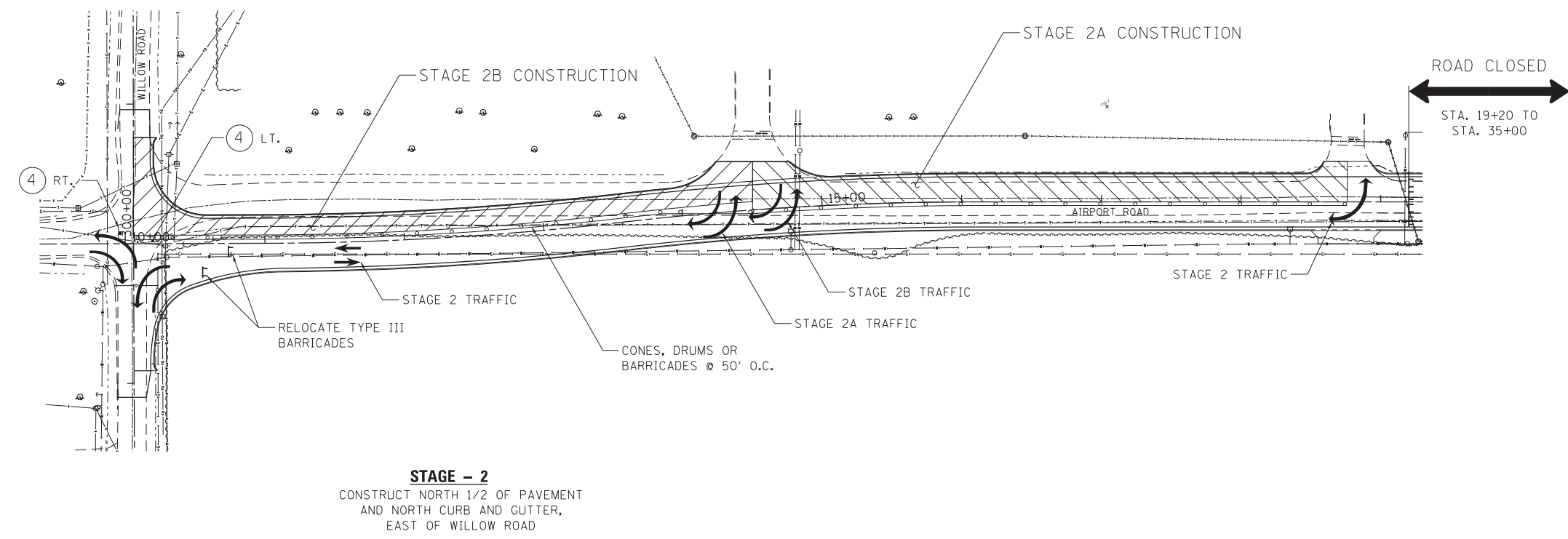


- NOTES:**
1. SEE TRAFFIC CONTROL PLAN SHEET 31 FOR FULL DETOUR PLAN.
 2. CONSTRUCTION, MAINTENANCE, AND REMOVAL OF TEMPORARY WIDENING, INCLUDING TEMPORARY PIPE CULVERTS, SHALL BE INCLUDED IN THE COST OF THE TRAFFIC CONTROL AND PROTECTION (SPECIAL) PAY ITEM.



DRIVER = JPL/TD/VL
 FILE NAME = F:\2014\14001-80\CAD\Plans\14001-80-st-Traffic-Control.dwg

Farnsworth GROUP, INC.
 2211 West Bradley Avenue
 Champaign, Illinois 61821
 217/352-7408, 217/352-7409 fax

USER NAME = slisenby
 PRINTER = \$SYSPRINTER_NAME\$
 PLOT SCALE = 50.00' / in.
 PLOT DATE = 3/17/2017

DESIGNED - DSC
 DRAWN - JDK
 CHECKED - JLF
 DATE - 01/26/2017

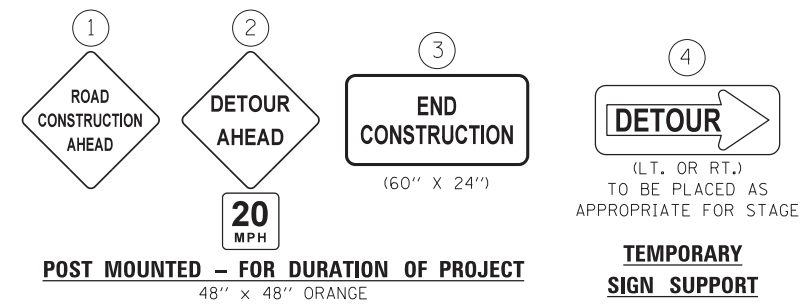
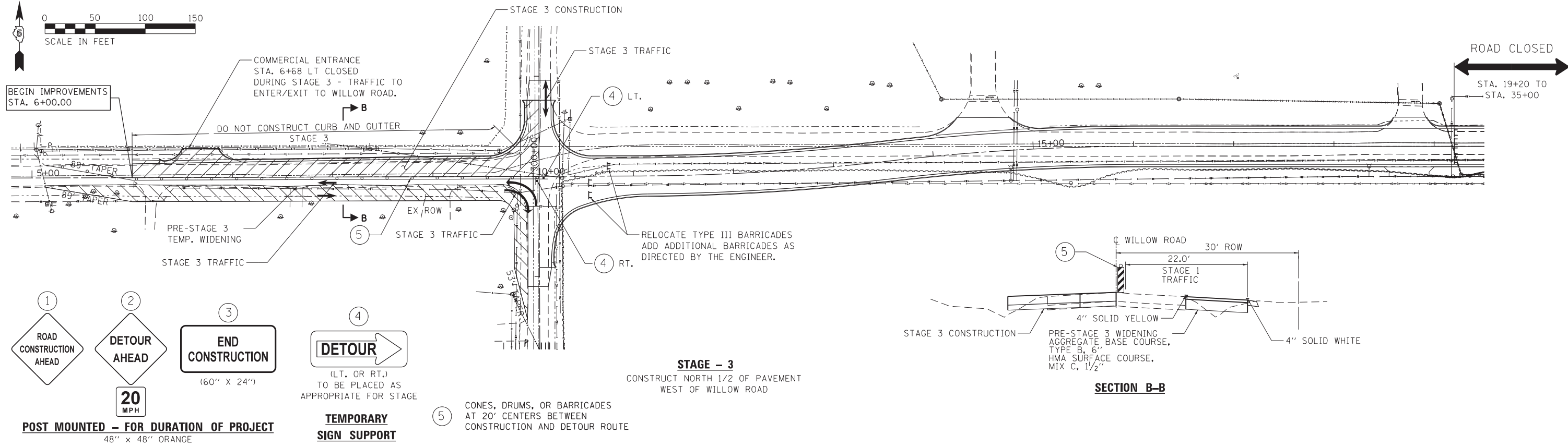
REVISED -
 REVISED -
 REVISED -
 REVISED -

STATE OF ILLINOIS
DEPARTMENT OF TRANSPORTATION

TRAFFIC CONTROL PLAN - WILLOW ROAD

SCALE: 1"=50' SHEET NO. 1 OF 5 SHEETS STA. TO STA.

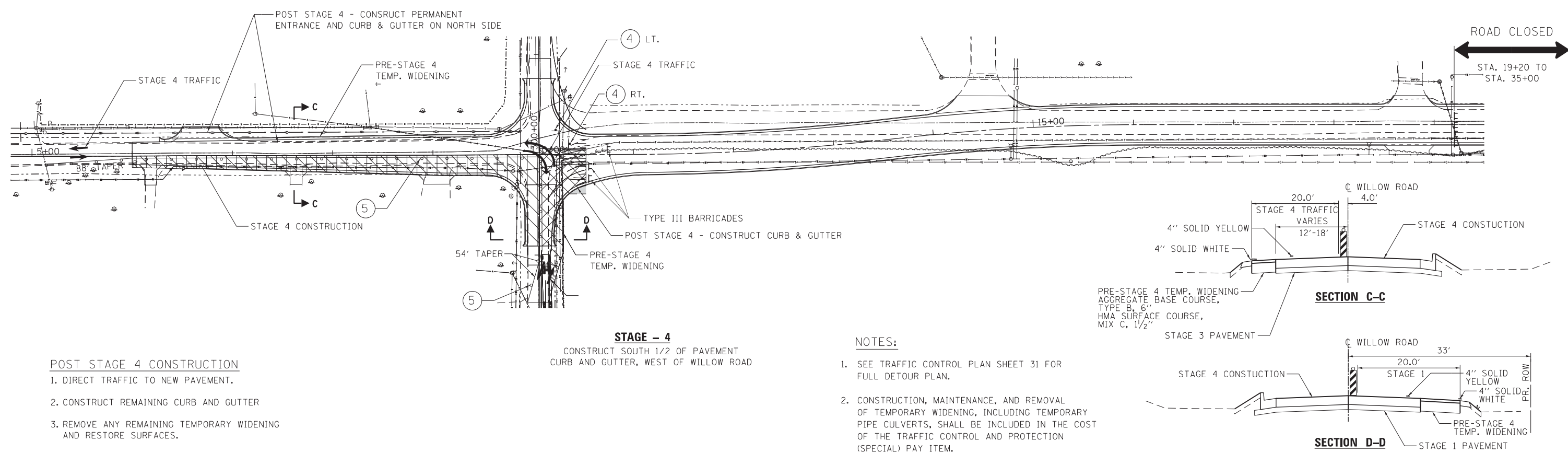
F.A.U. RTE.	SECTION	COUNTY	TOTAL SHEETS	SHEET NO.
7190	13-00532-00-PV	CHAMPAIGN	80	27
CONTRACT NO.				
ILLINOIS FED. AID PROJECT				



POST MOUNTED - FOR DURATION OF PROJECT
48" x 48" ORANGE

TEMPORARY SIGN SUPPORT
(LT. OR RT.) TO BE PLACED AS APPROPRIATE FOR STAGE

STAGE - 3
CONSTRUCT NORTH 1/2 OF PAVEMENT WEST OF WILLOW ROAD



- POST STAGE 4 CONSTRUCTION**
- DIRECT TRAFFIC TO NEW PAVEMENT.
 - CONSTRUCT REMAINING CURB AND GUTTER
 - REMOVE ANY REMAINING TEMPORARY WIDENING AND RESTORE SURFACES.

STAGE - 4
CONSTRUCT SOUTH 1/2 OF PAVEMENT CURB AND GUTTER, WEST OF WILLOW ROAD

- NOTES:**
- SEE TRAFFIC CONTROL PLAN SHEET 31 FOR FULL DETOUR PLAN.
 - CONSTRUCTION, MAINTENANCE, AND REMOVAL OF TEMPORARY WIDENING, INCLUDING TEMPORARY PIPE CULVERTS, SHALL BE INCLUDED IN THE COST OF THE TRAFFIC CONTROL AND PROTECTION (SPECIAL) PAY ITEM.

DRIVER = #PLT05V.L*
 FILE NAME = F:\2014\140001-00\CAD\Plans\140001-00-Int-Traffic Control.dwg

Farnsworth GROUP, INC.
2211 West Bradley Avenue
Champaign, Illinois 61821
217/352-7408, 217/352-7409 fax

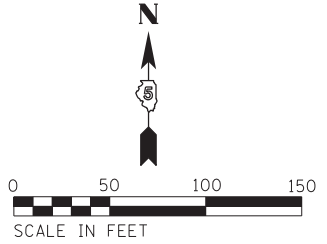
USER NAME = slisenby	DESIGNED - DSC	REVISED -
PRINTER = \$SYSPRINTER_NAME\$	DRAWN - JDK	REVISED -
PLOT SCALE = 50.00' / 1" =	CHECKED - JLF	REVISED -
PLOT DATE = 3/17/2017	DATE - 01/26/2017	REVISED -

STATE OF ILLINOIS DEPARTMENT OF TRANSPORTATION

TRAFFIC CONTROL PLAN - WILLOW ROAD

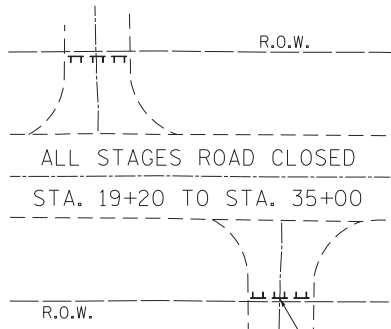
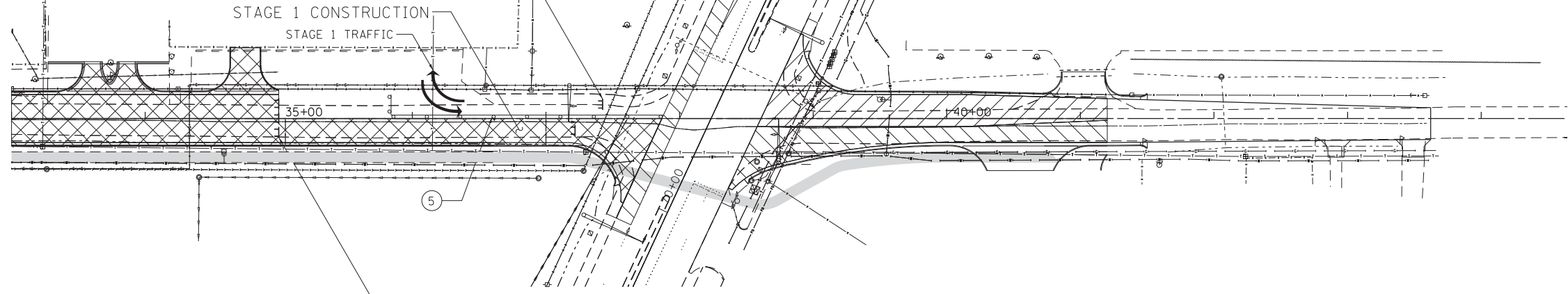
SCALE: 1"=50' SHEET NO. 2 OF 5 SHEETS STA. TO STA.

F.A.U. RTE.	SECTION	COUNTY	TOTAL SHEETS	SHEET NO.
7190	13-00532-00-PV	CHAMPAIGN	80	28
CONTRACT NO.				
ILLINOIS FED. AID PROJECT				



PRE-STAGE - 1
 ROAD CLOSED TO THROUGH TRAFFIC
 PROVIDE TYPE III BARRICADES WITH FLASHING LIGHTS AND R11-4 SIGNS "ROAD CLOSED TO THROUGH TRAFFIC" IN ACCORDANCE WITH DETAIL ON STANDARD 701901 ADJUST LOCATION OF BARRICADES FOR EACH STAGE.

PRE-STAGE 1
 CLOSE THE RIGHT LANE OF SOUTH BOUND ROUTE 45 IN ACCORDANCE WITH STANDARD 701422 (RTE. 45 POSTED SPEED = 50MPH)



PROVIDE TYPE III BARRICADES AND R11-2 SIGN "ROAD CLOSED" ACROSS COMMERCIAL ENTRANCE AT R.O.W. LINE, TYP.
 STA. 26+58 LT.
 STA. 27+59 RT.
 STA. 31+74 RT.
 STA. 33+73 LT. (STAGE 2 - OPEN ENTRANCE)

PRE-STAGE 1 - STA. 35+00
 PROVIDE TYPE III BARRICADES WITH FLASHING LIGHTS AND R11-2 SIGNS "ROAD CLOSED" SHOULDER TO SHOULDER IN ACCORDANCE WITH DETAIL ON STANDARD 701901 ADJUST LOCATION OF BARRICADES FOR EACH STAGE.

STAGE - 1

1. CONSTRUCT SOUTH 1/2 OF PAVEMENT AND CURB AND GUTTER WEST OF ROUTE 45.
2. CONSTRUCT NORTH 1/2 OF PAVEMENT AND CURB AND GUTTER APPROX. STA 33+00 TO STA. 35+00.
3. CONSTRUCT COMMERCIAL ENTRANCE STA. 33+70 LT.

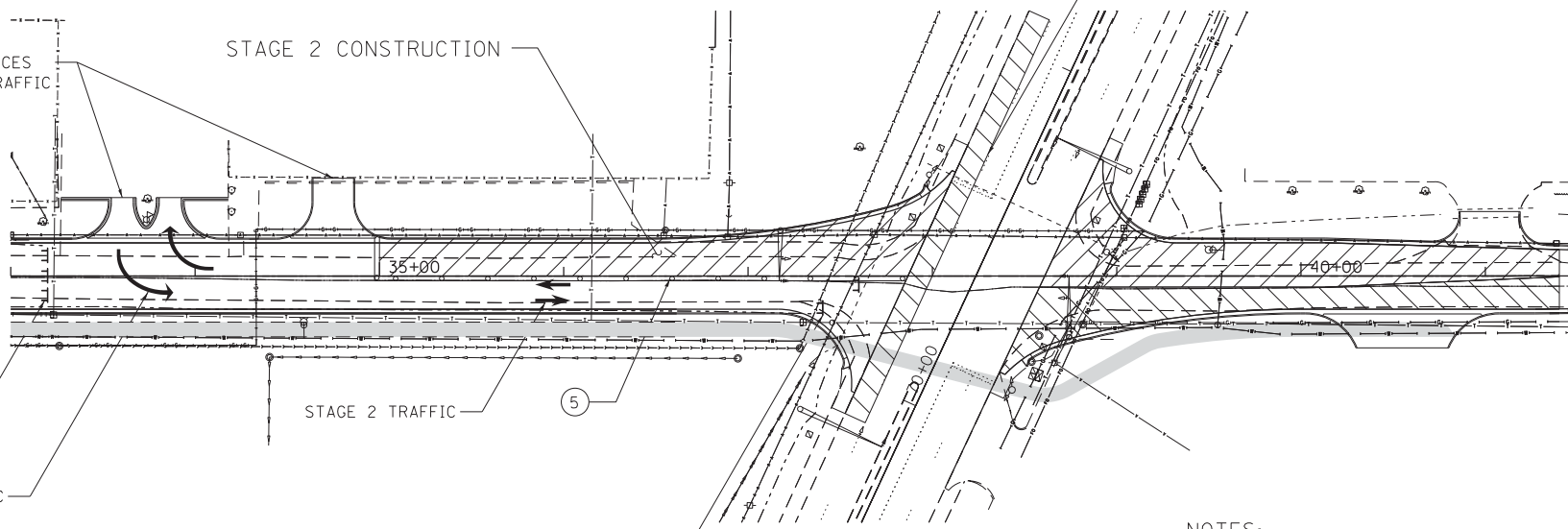
TRAFFIC SIGNAL GENERAL NOTES:

1. CONTRACTOR SHALL INSTALL THE PERMANENT TRAFFIC SIGNAL AS SHOWN ON THE TRAFFIC SIGNAL PLANS.
2. THE CONTRACTOR SHALL BE RESPONSIBLE FOR ADJUSTING THE ANGLE FOR THE TRAFFIC SIGNAL HEADS TO PROVIDE VISIBILITY FOR EACH STAGE OF CONSTRUCTION AND RETURNING THEM TO THE PERMANENT ANGLE UPON COMPLETION OF CONSTRUCTION.
3. THE CONTRACTOR SHALL BE RESPONSIBLE FOR MODIFYING PERMANENT AND/OR TEMPORARY TRAFFIC SIGNAL CONTROLLER SETTINGS, PHASING INPUTS, AND TIMING CHANGES TO ACCOMMODATE PROPOSED GEOMETRICS AND ANTICIPATED TRAFFIC VOLUMES DURING EACH STAGE OF CONSTRUCTION. THE CONTRACTOR SHALL NOTIFY THE CITY OF URBANA TRAFFIC ENGINEER AT LEAST SEVEN (7) DAYS PRIOR TO EACH STAGE OF CONSTRUCTION. PROPOSED TRAFFIC SIGNAL PHASING AND TIMING PLANS SHALL BE APPROVED BY THE CITY OF URBANA TRAFFIC ENGINEER PRIOR TO IMPLEMENTATION.
4. VIDEO DETECTION ON AIRPORT ROAD FOR VEHICULAR ACTUATION. CONTRACTOR SHALL MODIFY CONTROLLER AND/OR SUPPLY EQUIPMENT TO PROVIDE VEHICULAR ACTUATION DURING EACH STAGE OF CONSTRUCTION. THE CONTRACTOR SHALL BE RESPONSIBLE FOR ADJUSTING VIDEO DETECTION CAMERAS AND THEIR DETECTION ZONES TO OPTIMIZE VEHICULAR ACTUATION FOR EACH TRAVEL LANE FOR EACH STAGE OF CONSTRUCTION. THE CITY OF URBANA AND/OR IDOT SHALL APPROVE DETECTION ZONES PRIOR TO IMPLEMENTATION.
5. SHOULD TRAVEL DELAYS AND CONGESTION LEVELS BECOME EXCESSIVE DURING ANY STAGE OF CONSTRUCTION, THE CITY OF URBANA AND/OR IDOT RESERVES THE RIGHT TO REQUIRE MODIFICATIONS TO THE PROPOSED STAGING PLANS, SIGNAL TIMINGS, AND/OR TRAFFIC CONTROL DEVICES SHOWN HEREIN, FOR THE PURPOSE OF ENSURING SAFE AND EFFICIENT OPERATIONS ALONG ALL PROJECT CORRIDORS. THE CONTRACTOR SHALL BE RESPONSIBLE FOR IMPLEMENTING ALL NECESSARY TRAFFIC CONTROL DEVICES IN ACCORDANCE WITH CITY AND/OR IDOT RECOMMENDATIONS.
6. THIS WORK SHALL BE INCLUDED IN THE COST FOR TRAFFIC CONTROL AND PROTECTION, (SPECIAL).

STAGE 2 - ENTRANCES OPEN TO LOCAL TRAFFIC

STAGE 2 CONSTRUCTION

LANE CLOSURE CONTINUES - STAGE 2



PRE-STAGE 2
 MOVE TYPE III BARRICADES "ROAD CLOSED" TO STA. 33+20

PRE-STAGE - 2
 ROAD CLOSED TO THROUGH TRAFFIC
 RELOCATE TYPE III BARRICADES "ROAD CLOSED TO THROUGH TRAFFIC".

STAGE - 2
 CONSTRUCT NORTH 1/2 OF PAVEMENT AND CURB AND GUTTER, WEST OF US ROUTE 45

NOTES:

1. SEE TRAFFIC CONTROL PLAN SHEET 31 FOR FULL DETOUR PLAN.
2. CONSTRUCTION, MAINTENANCE, AND REMOVAL OF TEMPORARY WIDENING, INCLUDING TEMPORARY PIPE CULVERTS, SHALL BE INCLUDED IN THE COST OF THE TRAFFIC CONTROL AND PROTECTION (SPECIAL) PAY ITEM.

⑤ CONES, DRUMS, OR BARRICADES AT 20' CENTERS BETWEEN CONSTRUCTION AND DETOUR ROUTE

DRIVER = #PLTDRVIL*
 FILE NAME = F:\2014\140001-00\CADD\Plans\140001-00-ht-Traffic Control\3.dgn



USER NAME = slsionby	DESIGNED - DSC	REVISED -
PRINTER = \$SYSPRINTER_NAME\$	DRAWN - JDK	REVISED -
PLOT SCALE = 50.00' / in.	CHECKED - JLF	REVISED -
PLOT DATE = 3/17/2017	DATE - 01/26/2017	REVISED -

**STATE OF ILLINOIS
 DEPARTMENT OF TRANSPORTATION**

TRAFFIC CONTROL PLAN - WEST OF US RTE 45

SCALE: 1"=50' SHEET NO. 3 OF 5 SHEETS STA. TO STA.

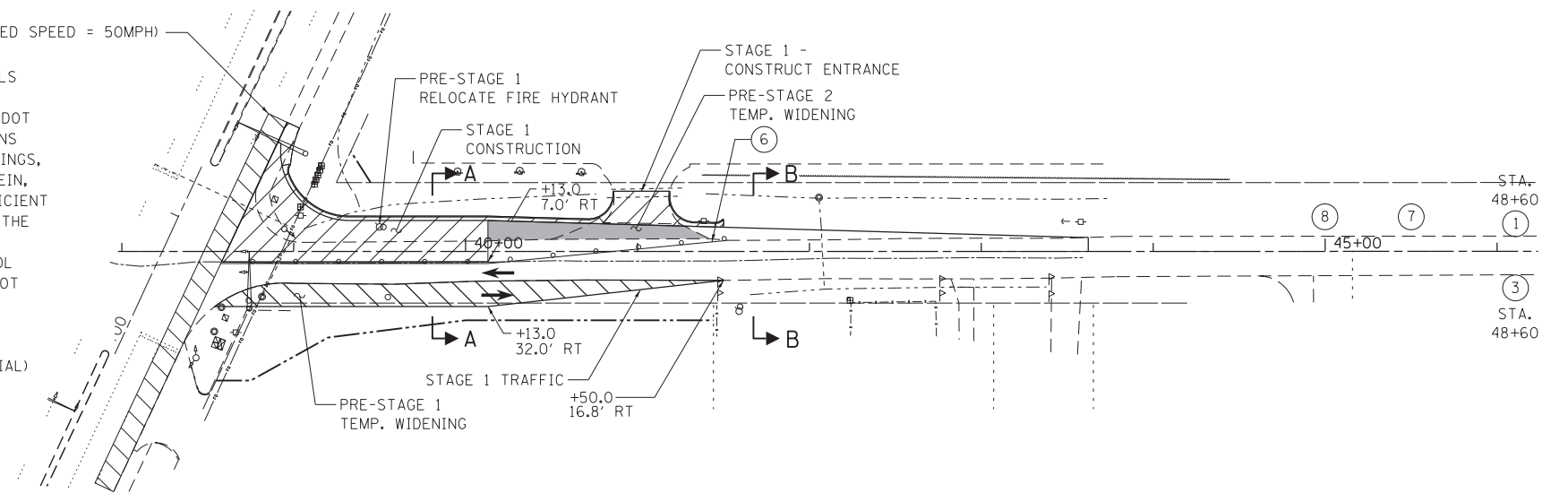
F.A.U. RTE.	SECTION	COUNTY	TOTAL SHEETS	SHEET NO.
7190	13-00532-00-PV	CHAMPAIGN	80	29
CONTRACT NO.				
ILLINOIS FED. AID PROJECT				

TRAFFIC SIGNAL GENERAL NOTES:

- CONTRACTOR SHALL INSTALL THE PERMANENT TRAFFIC SIGNAL AS SHOWN ON THE TRAFFIC SIGNAL PLANS.
- THE CONTRACTOR SHALL BE RESPONSIBLE FOR ADJUSTING THE ANGLE FOR THE TRAFFIC SIGNAL HEADS TO PROVIDE VISIBILITY FOR EACH STAGE OF CONSTRUCTION AND RETURNING THEM TO THE PERMANENT ANGLE UPON COMPLETION OF CONSTRUCTION.
- THE CONTRACTOR SHALL BE RESPONSIBLE FOR MODIFYING PERMANENT AND/OR TEMPORARY TRAFFIC SIGNAL CONTROLLER SETTINGS, PHASING INPUTS, AND TIMING CHANGES TO ACCOMMODATE PROPOSED GEOMETRICS AND ANTICIPATED TRAFFIC VOLUMES DURING EACH STAGE OF CONSTRUCTION. THE CONTRACTOR SHALL NOTIFY THE CITY OF URBANA TRAFFIC ENGINEER AT LEAST SEVEN (7) DAYS PRIOR TO EACH STAGE OF CONSTRUCTION. PROPOSED TRAFFIC SIGNAL PHASING AND TIMING PLANS SHALL BE APPROVED BY THE CITY OF URBANA TRAFFIC ENGINEER PRIOR TO IMPLEMENTATION.
- VIDEO DETECTION ON AIRPORT ROAD FOR VEHICULAR ACTUATION. CONTRACTOR SHALL MODIFY CONTROLLER AND/OR SUPPLY EQUIPMENT TO PROVIDE VEHICULAR ACTUATION DURING EACH STAGE OF CONSTRUCTION. THE CONTRACTOR SHALL BE RESPONSIBLE FOR ADJUSTING VIDEO DETECTION CAMERAS AND THEIR DETECTION ZONES TO OPTIMIZE VEHICULAR ACTUATION FOR EACH TRAVEL LANE FOR EACH STAGE OF CONSTRUCTION. THE CITY OF URBANA AND/OR IDOT SHALL APPROVE DETECTION ZONES PRIOR TO IMPLEMENTATION.

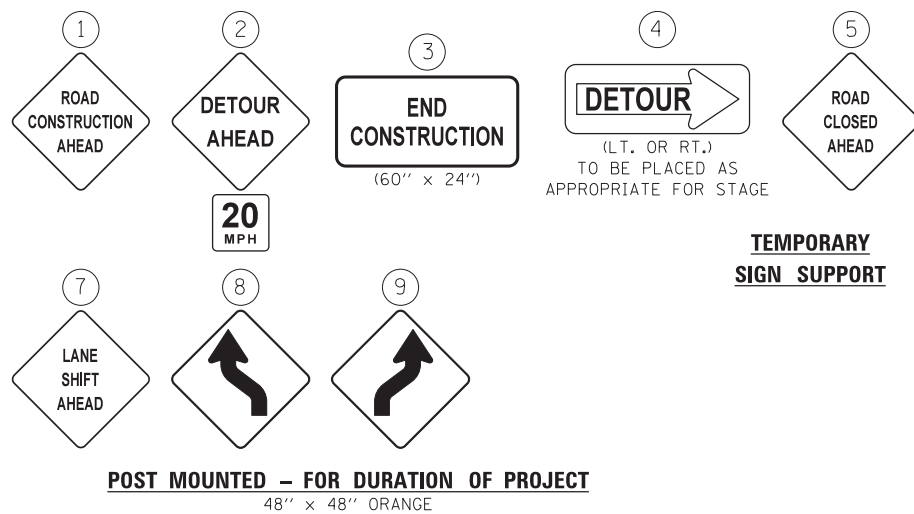
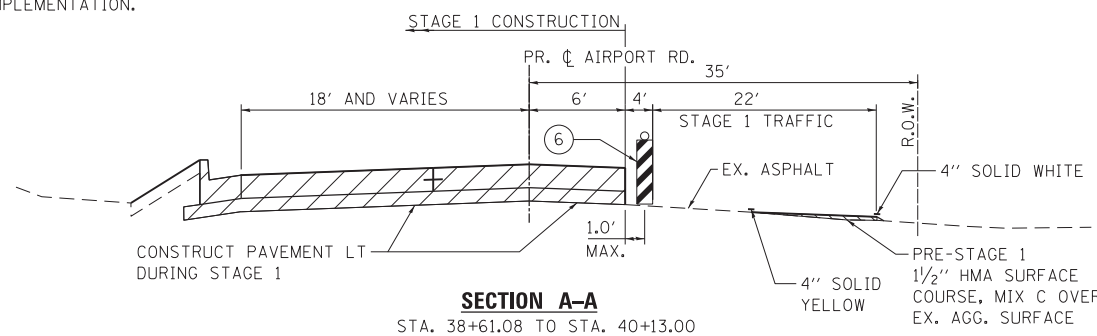
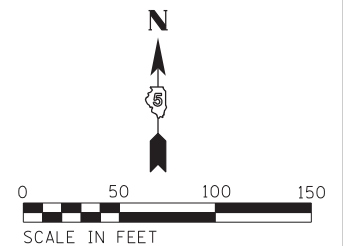
PRE-STAGE 1
CLOSE THE RIGHT LANE OF NORTH BOUND ROUTE 45 IN ACCORDANCE WITH STANDARD 701422 (RTE. 45 POSTED SPEED = 50MPH)

- SHOULD TRAVEL DELAYS AND CONGESTION LEVELS BECOME EXCESSIVE DURING ANY STAGE OF CONSTRUCTION, THE CITY OF URBANA AND/OR IDOT RESERVES THE RIGHT TO REQUIRE MODIFICATIONS TO THE PROPOSED STAGING PLANS, SIGNAL TIMINGS, AND/OR TRAFFIC CONTROL DEVICES SHOWN HEREIN, FOR THE PURPOSE OF ENSURING SAFE AND EFFICIENT OPERATIONS ALONG ALL PROJECT CORRIDORS. THE CONTRACTOR SHALL BE RESPONSIBLE FOR IMPLEMENTING ALL NECESSARY TRAFFIC CONTROL DEVICES IN ACCORDANCE WITH CITY AND/OR IDOT RECOMMENDATIONS.
- THIS WORK SHALL BE INCLUDED IN THE COST FOR TRAFFIC CONTROL AND PROTECTION, (SPECIAL) AND WILL NOT BE PAID FOR SEPARATELY.



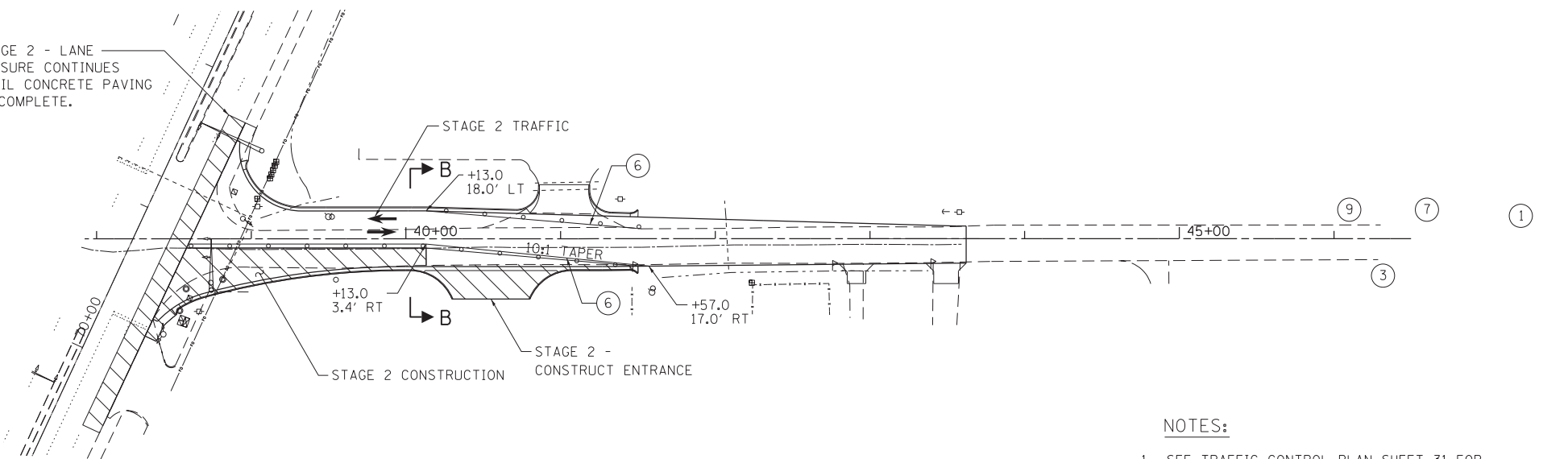
STAGE - 1

- CONSTRUCT NORTH LANE AND CENTER LANE TO STA. 40+13
- CONSTRUCT NORTH CURB & GUTTER TO STA. 41+50



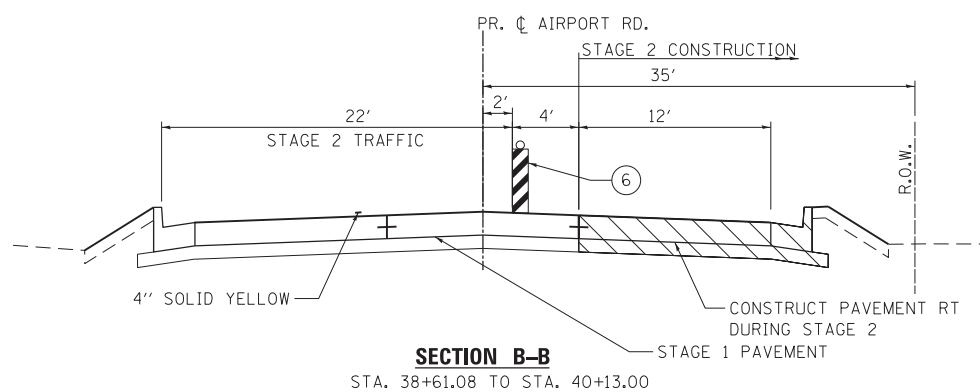
6 CONES, DRUMS, OR BARRICADES AT 20' CENTERS BETWEEN CONSTRUCTION AND DETOUR ROUTE

STAGE 2 - LANE CLOSURE CONTINUES UNTIL CONCRETE PAVING IS COMPLETE.



STAGE - 1

- CONSTRUCT SOUTH LANE OF PAVEMENT TO STA. 40+13.
- CONSTRUCT SOUTH CURB AND GUTTER TO STA. 41+50.
- CONSTRUCT REMAINING HMA PAVEMENT STA. 40+13.00 TO 43+62.17. WITH ROAD OPEN TO TRAFFIC. FLAGGING REQUIRED.



NOTES:

- SEE TRAFFIC CONTROL PLAN SHEET 31 FOR FULL DETOUR PLAN.
- CONSTRUCTION, MAINTENANCE, AND REMOVAL OF TEMPORARY WIDENING, INCLUDING TEMPORARY PIPE CULVERTS, SHALL BE INCLUDED IN THE COST OF THE TRAFFIC CONTROL AND PROTECTION (SPECIAL) PAY ITEM.

DRAWN BY: JPL/TCS/VL; USER: JPL; FILE NAME: P:\2014\140001-200\CAD\Plans\140001-00-Int-Traffic Control.dwg

Farnsworth GROUP, INC.
2211 West Bradley Avenue
Champaign, Illinois 61821
217/352-7408, 217/352-7409 fax

USER NAME = sjlsenby
PRINTER = \$SYSPRINTER_NAME\$
PLOT SCALE = 50.00' / 1" =
PLOT DATE = 3/17/2017

DESIGNED - DSC
DRAWN - JDK
CHECKED - JLF
DATE - 01/26/2017

REVISED -
REVISED -
REVISED -
REVISED -












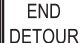


STATE OF ILLINOIS DEPARTMENT OF TRANSPORTATION

TRAFFIC CONTROL PLAN - EAST OF US RTE 45

SCALE: 1"=50' SHEET NO. 4 OF 5 SHEETS STA. TO STA.

F.A.U. RTE.	SECTION	COUNTY	TOTAL SHEETS	SHEET NO.
7190	13-00532-00-PV	CHAMPAIGN	80	30
CONTRACT NO.			ILLINOIS FED. AID PROJECT	

LEGEND

- ①  ROAD CLOSED
R11-2
TYPE III BARRICADES FORM SHOULDER TO SHOULDER WITH "ROAD CLOSED" (R11-2) AND TOW FLASHING AMBER LIGHTS ON TOP OF EACH BARRICADE AS SHOWN IN "ROAD CLOSED TO ALL TRAFFIC" DETAIL ON HIGHWAY STANDARD 701901
- ②  DETOUR AHEAD
W20-2
48" X 48"
POST MOUNTED
- ③  DETOUR
M4-8
24" X 12"
POST MOUNTED
- ④  WEST
M3-4
24" X 12"
POST MOUNTED
- ⑤  EAST
M3-2
24" X 12"
POST MOUNTED
- ⑥  AIRPORT RD.
D3-1
VARIES X 12"
POST MOUNTED
- ⑦  →
M6-1
21" X 15"
POST MOUNTED
- ⑧  ←
M5-1
21" X 15"
POST MOUNTED
- ⑨  →
M5-1
21" X 15"
POST MOUNTED
- ⑩  ↑
M6-3
21" X 15"
POST MOUNTED
- ⑪  AIRPORT RD. CLOSED U.S. 45 TO WILLOW RD.
BLACK LETTERING WITH ORANGE BACKGROUND VARIES X 42"
POST MOUNTED
- ⑫  END DETOUR
M4-8g
24" X 18"
POST MOUNTED
-  MB
PORTABLE CHANGEABLE MESSAGE SIGN
-  ROAD CLOSED AREA



DRIVER = #PL TDCV.L*
 FILE NAME = F:\2014\140901-200\CAD\PLANS\140901-00-INT-Traffic-Detour.dgn

Farnsworth GROUP, INC.
 2211 West Bradley Avenue
 Champaign, Illinois 61821
 217/352-7408, 217/352-7409 fax

USER NAME = slsionby	DESIGNED - DSC	REVISED -
PRINTER = \$SYSPRINTER_NAME\$	DRAWN - JDK	REVISED -
PLOT SCALE = 300.00' / in.	CHECKED - JLF	REVISED -
PLOT DATE = 3/17/2017	DATE - 01/26/2017	REVISED -

STATE OF ILLINOIS
DEPARTMENT OF TRANSPORTATION

TRAFFIC CONTROL PLAN - AIRPORT ROAD DETOUR

SCALE: NTS SHEET NO. 5 OF 5 SHEETS STA. TO STA.

F.A.U. RTE.	SECTION	COUNTY	TOTAL SHEETS	SHEET NO.
7190	13-00532-00-PV	CHAMPAIGN	80	31
CONTRACT NO.				
ILLINOIS FED. AID PROJECT				