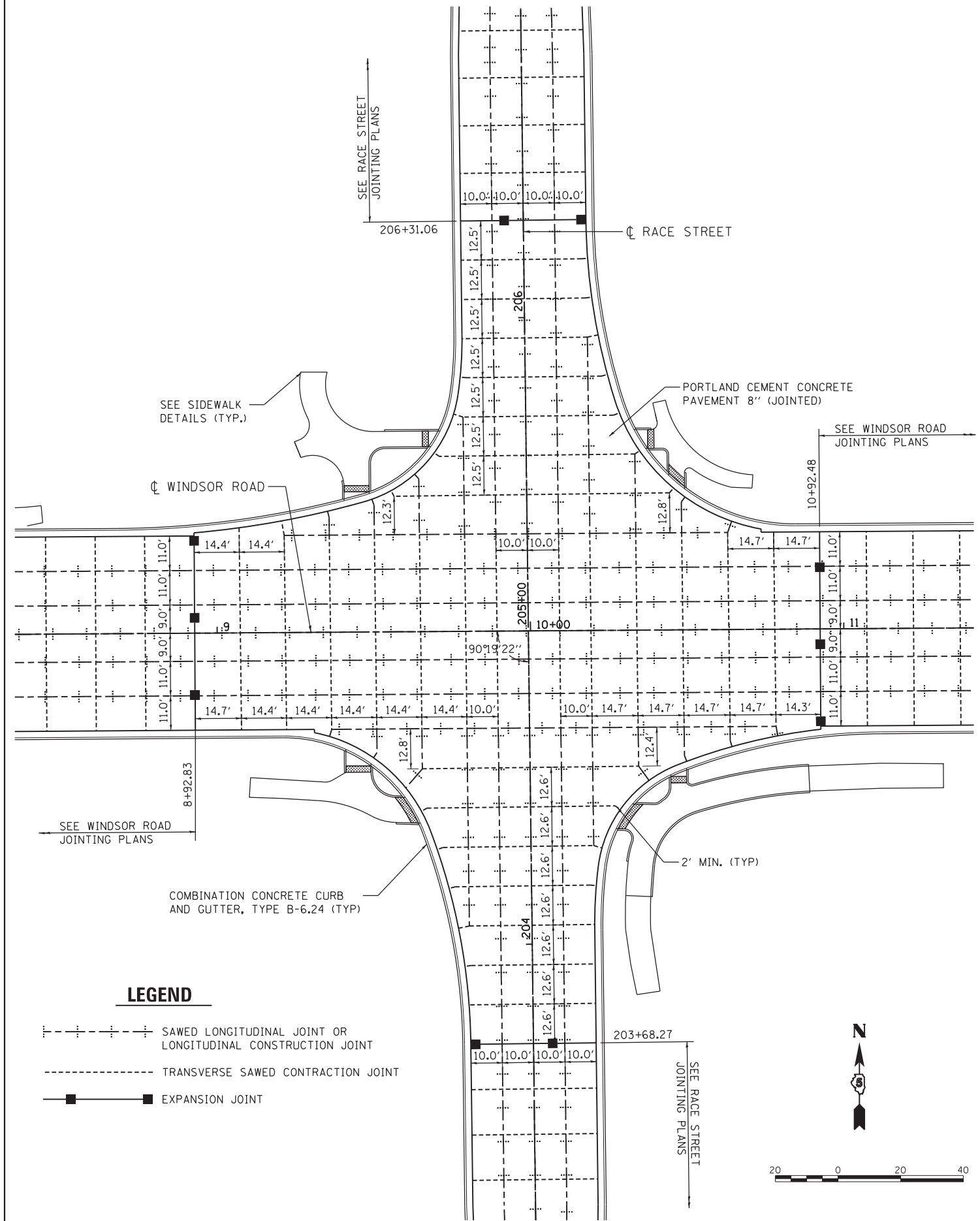
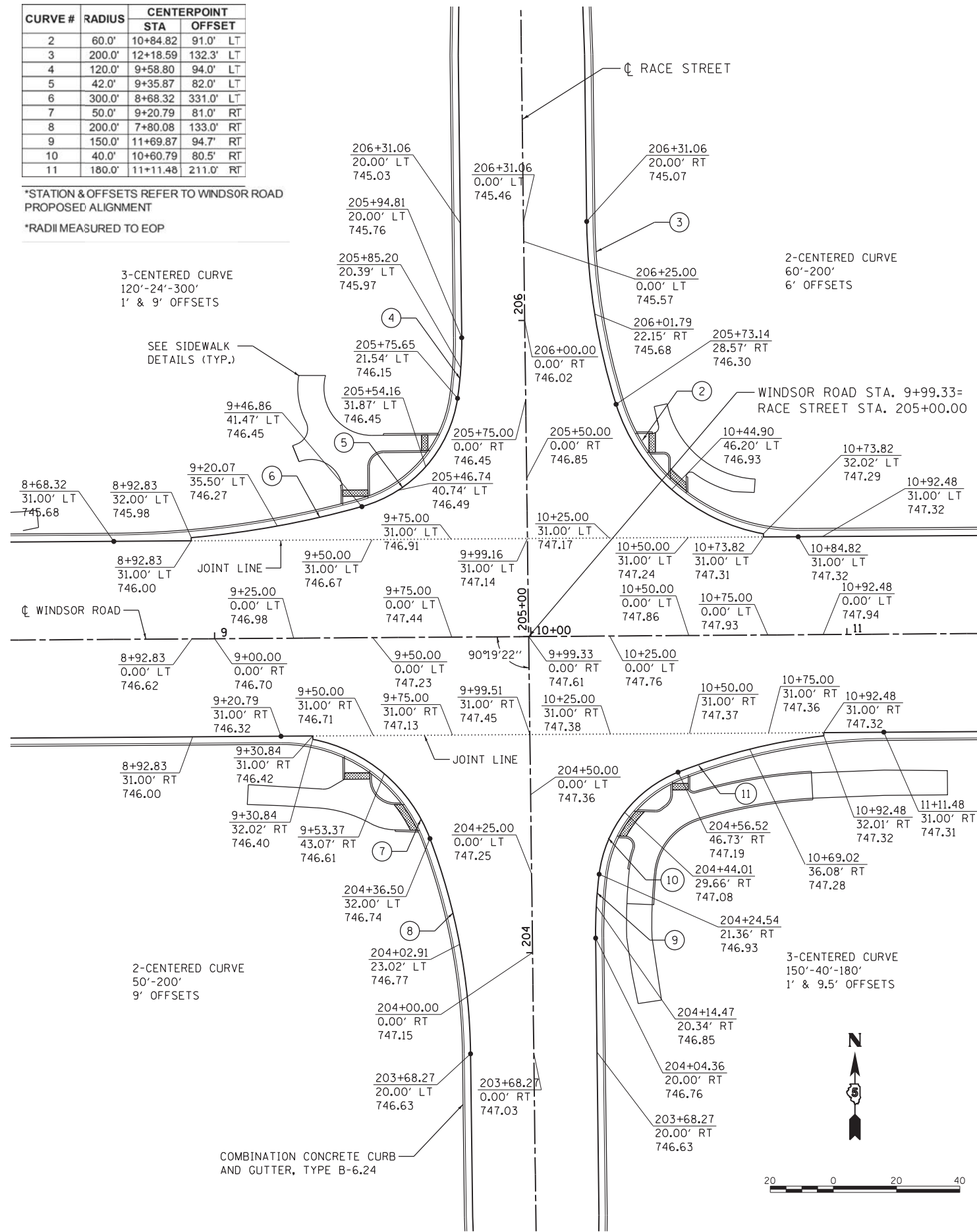


CURVE #	RADIUS	CENTERPOINT	
		STA	OFFSET
2	60.0'	10+84.82	91.0' LT
3	200.0'	12+18.59	132.3' LT
4	120.0'	9+58.80	94.0' LT
5	42.0'	9+35.87	82.0' LT
6	300.0'	8+68.32	331.0' LT
7	50.0'	9+20.79	81.0' RT
8	200.0'	7+80.08	133.0' RT
9	150.0'	11+69.87	94.7' RT
10	40.0'	10+60.79	80.5' RT
11	180.0'	11+11.48	211.0' RT

*STATION & OFFSETS REFER TO WINDSOR ROAD PROPOSED ALIGNMENT

*RADI MEASURED TO EOP



DESIGNED	RSJ	4/29/14
DRAWN	RSJ	4/29/14
REVIEWED	MH	4/29/14

FILE NAME =	USER NAME = johns00944	DESIGNED - RSJ	REVISED -
D513L0201-sht-intersec-01		DRAWN - RSJ	REVISED -
MODEL NAME =	PLOT SCALE = 40.0000' / in.	CHECKED - MH	REVISED -
Intersection Detail	PLOT DATE = 06/12/2014	DATE - 05-03-2014	REVISED -

STATE OF ILLINOIS
DEPARTMENT OF TRANSPORTATION

INTERSECTION DETAILS - (RACE ST.)
WINDSOR ROAD

SCALE: 1" = 20' SHEET 1 OF 2 SHEETS STA. TO STA.

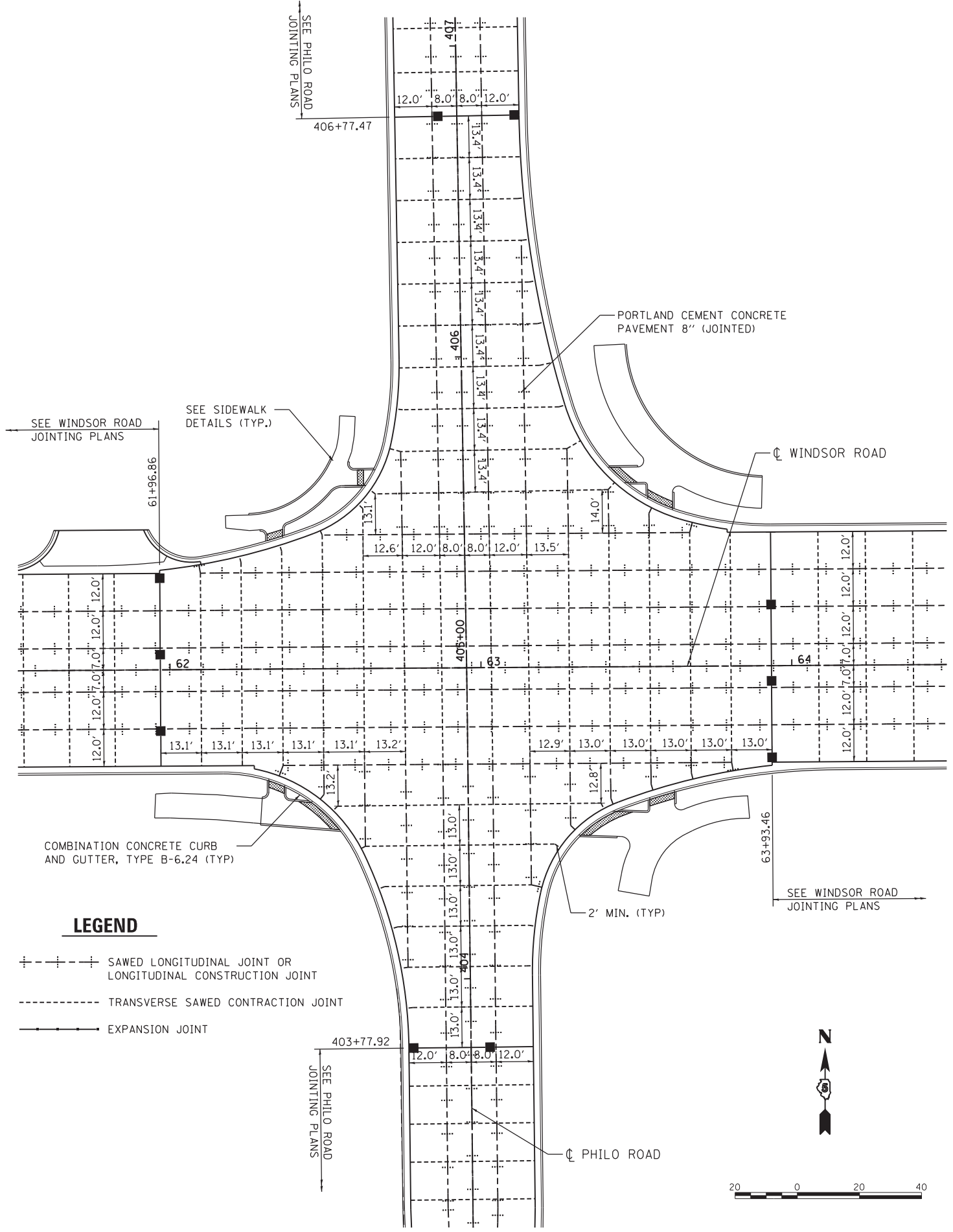
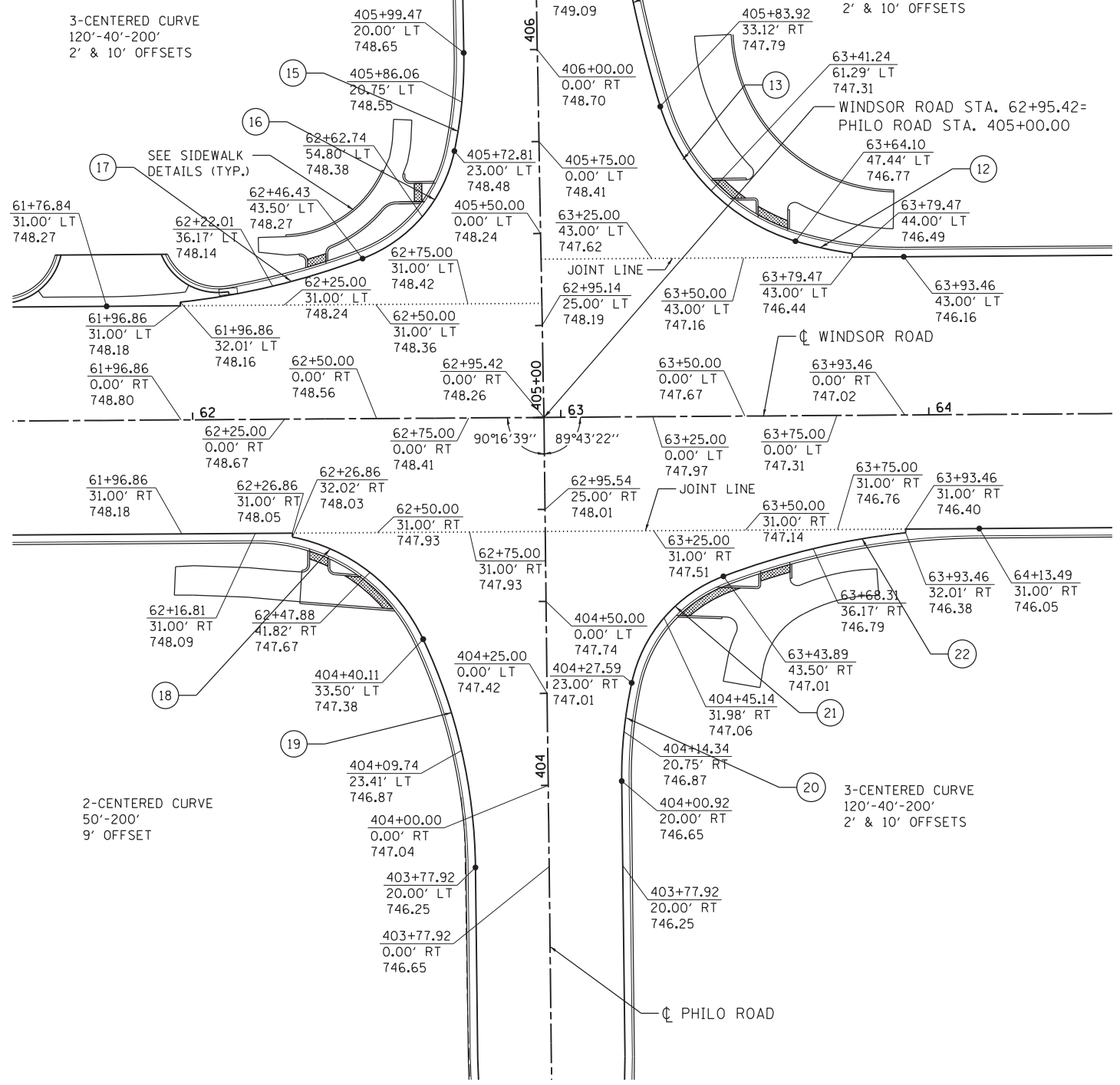
F.A.P. RTE.	SECTION	COUNTY	TOTAL SHEETS	SHEET NO.
7145	13-00540-00-PV	CHAMPAIGN	80	37
	13L0201	CONTRACT NO.	91515	

ILLINOIS FED. AID PROJECT

PENTABLE NAME = ...C:\ProgramData\Bentley\MicroStation V8i (SELECTseries)\Workspace\prBj\Bj\PRV\PRV\NAME.tbl...Plot\IDOT.pdf_600dpi.pltcf

CURVE #	RADIUS	CENTERPOINT	
		STA	OFFSET
12	100.0'	63+93.58	143.0' L
13	55.0'	63+80.31	100.0' L
14	340.0'	66+53.42	181.5' L
15	120.0'	61+54.32	97.9' L
16	40.0'	62+32.51	81.0' L
17	200.0'	61+76.84	231.0' L
18	50.0'	62+16.81	81.0' RT
19	150.0'	61+26.01	122.9' RT
20	120.0'	64+35.90	98.4' RT
21	40.0'	63+57.81	81.0' RT
22	200.0'	64+13.49	231.0' RT

*STATION & OFFSETS REFER TO WINDSOR ROAD PROPOSED ALIGNMENT
 *RADI MEASURED TO EOP



LEGEND

- +---+--- SAWED LONGITUDINAL JOINT OR LONGITUDINAL CONSTRUCTION JOINT
- TRANSVERSE SAWED CONTRACTION JOINT
- ==== EXPANSION JOINT

DESIGNED	RSJ	4/29/14
DRAWN	RSJ	4/29/14
REVIEWED	MH	4/29/14

FILE NAME = D513L0201-sht-intersec-02	USER NAME = johns00944	DESIGNED - RSJ	REVISED -
MODEL NAME = Intersection Detail	PLOT SCALE = 48.0000' / in.	DRAWN - RSJ	REVISED -
PENTABLE NAME = ...	PLOT DATE = 06/12/2014	CHECKED - MH	REVISED -
		DATE - 05-03-2014	REVISED -

**STATE OF ILLINOIS
DEPARTMENT OF TRANSPORTATION**

**INTERSECTION DETAILS - (PHILO RD.)
WINDSOR ROAD**

SCALE: 1" = 20' SHEET 2 OF 2 SHEETS STA. TO STA.

F.A.P. RTE.	SECTION	COUNTY	TOTAL SHEETS	SHEET NO.
7145	13-00540-00-PV	CHAMPAIGN	80	38
	13L0201	CONTRACT NO.	91515	
ILLINOIS FED. AID PROJECT				