

- NOTES:**
1. CONTRACTOR SHALL GIVE ONE MONTH NOTICE PRIOR TO BEGINNING DETENTION BASIN WORK.
 2. FRASCA INTERNATIONAL WILL INITIALLY DRAIN THE BASIN.
 3. CONTRACTOR SHALL BE RESPONSIBLE FOR MAINTAINING THE WATER LEVEL IN THE BASIN UNTIL THE DETENTION BASIN WORK IS COMPLETED.

DRIVER = 0PLT.DWG
 FILE NAME = P:\2014\140001-200\CAD\PI\Bans\140001-00-Int-BASIN.dwg

Farnsworth GROUP, INC.
 2211 West Bradley Avenue
 Champaign, Illinois 61821
 217/352-7408, 217/352-7409 fax

USER NAME = slisonby
 PRINTER = \$SYSPRINTER_NAME\$
 PLOT SCALE = 30.00' / in.
 PLOT DATE = 3/17/2017

DESIGNED - DSC
 DRAWN - JDK
 CHECKED - JLF
 DATE - 01/26/2017

REVISED -
 REVISED -
 REVISED -
 REVISED -

**STATE OF ILLINOIS
 DEPARTMENT OF TRANSPORTATION**

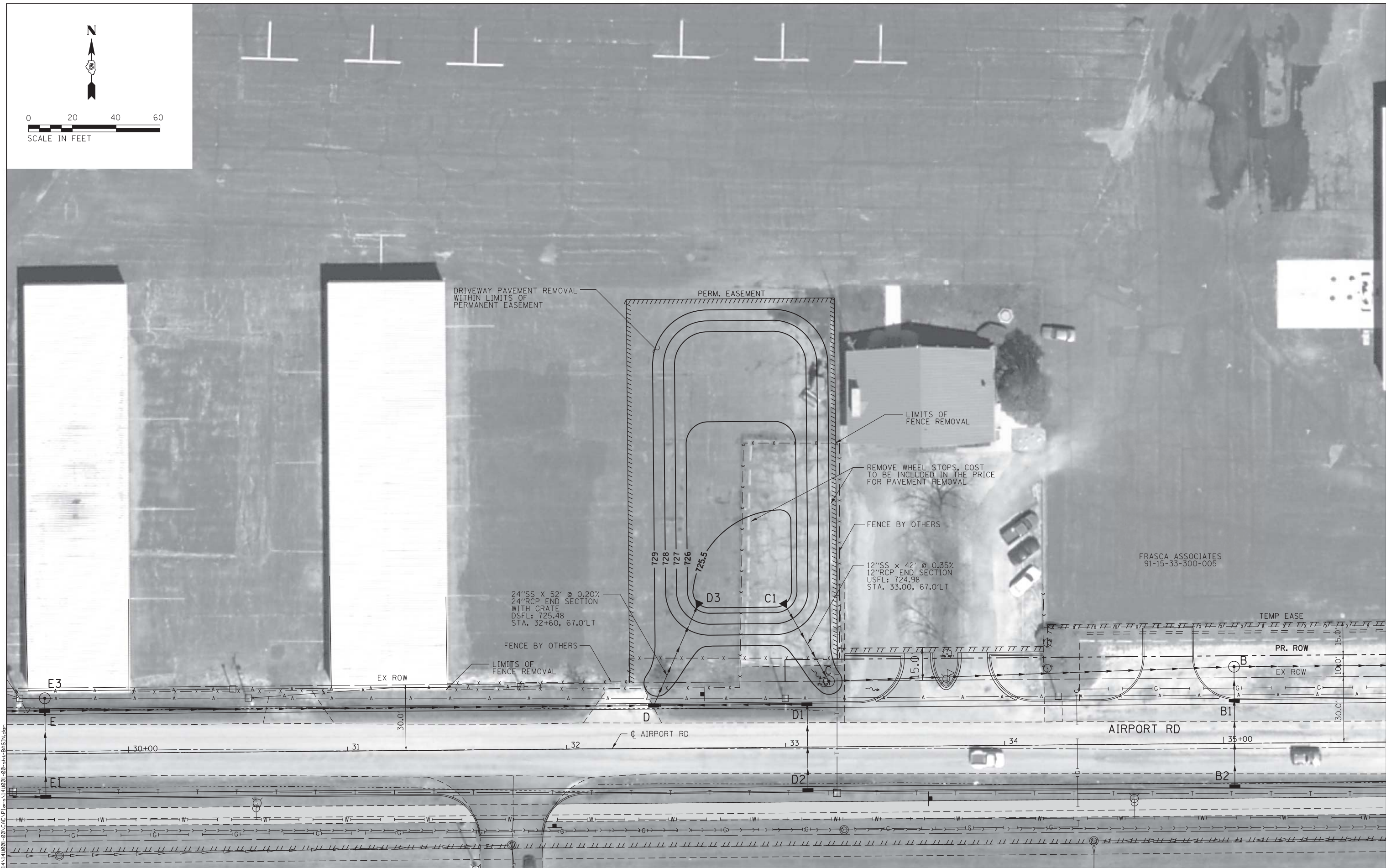
DETENTION BASIN - WEST

SCALE: 1"=60' SHEET NO. 1 OF 2 SHEETS STA. TO STA.

F.A.U. RTE.	SECTION	COUNTY	TOTAL SHEETS	SHEET NO.
7190	13-00532-00-PV	CHAMPAIGN	80	38
CONTRACT NO.				
ILLINOIS FED. AID PROJECT				



0 20 40 60
SCALE IN FEET



DRIVER = #PLTDRVIL*
 FILE NAME = F:\2014\140901-70\CD\CD\Plan\140901-00-Int-BASIS.dwg

Farnworth GROUP, INC.
 2211 West Bradley Avenue
 Champaign, Illinois 61821
 217/352-7408, 217/352-7409 fax

USER NAME = slisonby	DESIGNED - DSC	REVISED -
PRINTER = \$SYSPRINTER_NAME\$	DRAWN - JDK	REVISED -
PLOT SCALE = 20.00' / in.	CHECKED - JLF	REVISED -
PLOT DATE = 3/17/2017	DATE - 01/26/2017	REVISED -

**STATE OF ILLINOIS
 DEPARTMENT OF TRANSPORTATION**

DETENTION BASIN - EAST

SCALE: 1"=20' SHEET NO. 2 OF 2 SHEETS STA. TO STA.

F.A.U. RTE.	SECTION	COUNTY	TOTAL SHEETS	SHEET NO.
7190	13-00532-00-PV	CHAMPAIGN	80	39
CONTRACT NO.				
ILLINOIS FED. AID PROJECT				