

LEGEND

- SEE STANDARDS 420001, 420101 AND 420106
- SEAL ALL JOINTS (LONGITUDINAL & TRANSVERSE) ACCORDING TO ARTICLE 420.12
- TRANSVERSE CONTRACTION JOINT WITH 1.25" DOWEL BARS
- - - SAWED LONGITUDINAL JOINT (FOR PAVEMENT POURED MONOLITHICALLY) OR LONGITUDINAL CONSTRUCTION (FOR PAVEMENT POURED IN 2 PIECES)

DRIVER = #PLT05V.L
 FILE NAME = F:\2014\140001-00\CADD\Plans\140001-00-Int-Intersect.dwg

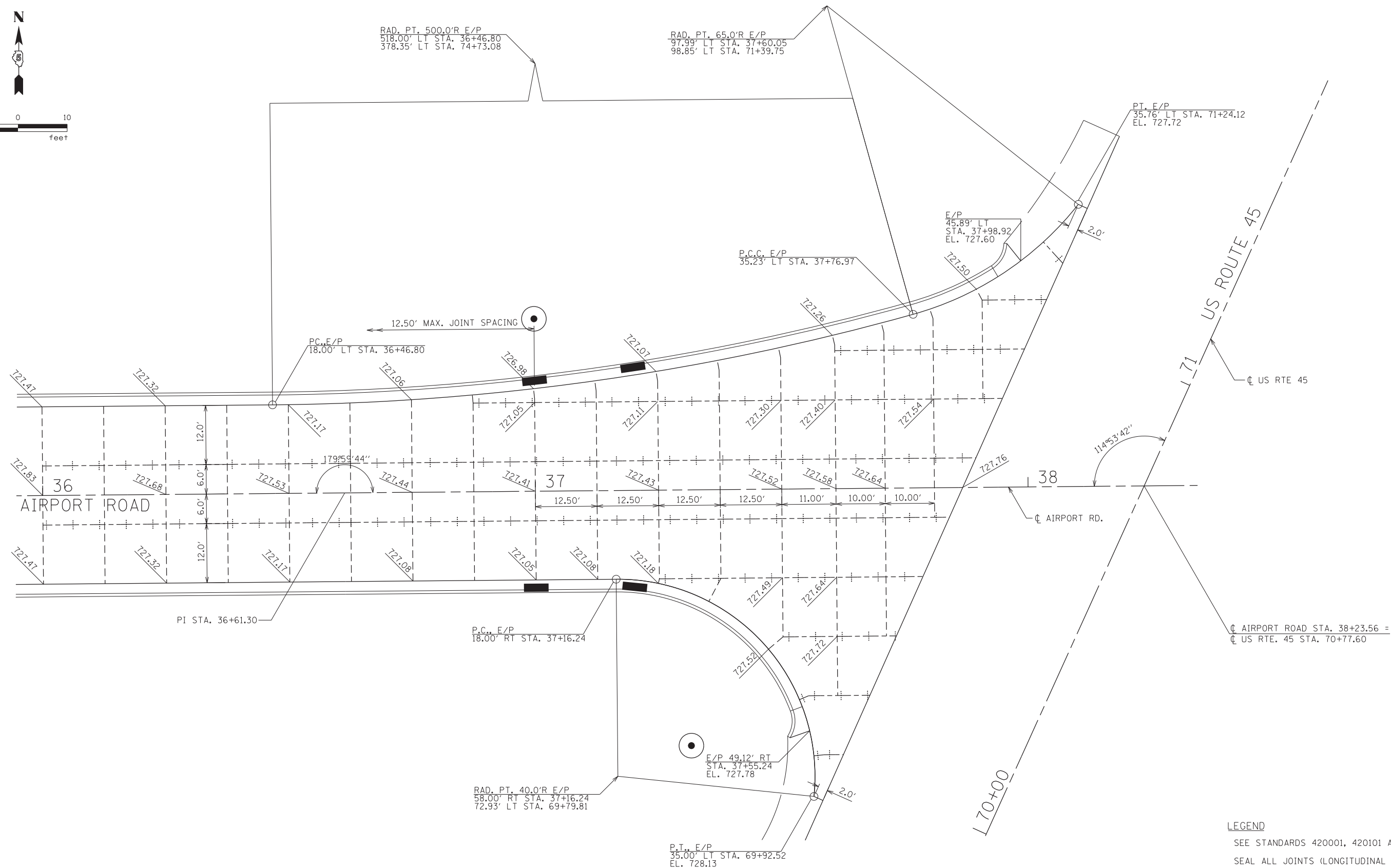
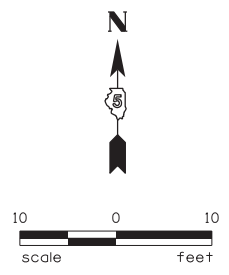


USER NAME = slisenby	DESIGNED - DSC	REVISED -
PRINTER = \$SYSPRINTER_NAME\$	DRAWN - JDK	REVISED -
PLOT SCALE = 10.00' / in.	CHECKED - JLF	REVISED -
PLOT DATE = 3/17/2017	DATE - 01/26/2017	REVISED -

**STATE OF ILLINOIS
 DEPARTMENT OF TRANSPORTATION**

INTERSECTION DETAIL		
AIRPORT ROAD AND WILLOW ROAD		
SCALE: 1"=10'	SHEET NO. 1 OF 3 SHEETS	STA. TO STA.

F.A.U. RTE.	SECTION	COUNTY	TOTAL SHEETS	SHEET NO.
7190	13-00532-00-PV	CHAMPAIGN	80	40
CONTRACT NO.				
ILLINOIS FED. AID PROJECT				



- LEGEND**
- SEE STANDARDS 420001, 420101 AND 420106
 - SEAL ALL JOINTS (LONGITUDINAL & TRANSVERSE) ACCORDING TO ARTICLE 420.12
 - TRANSVERSE CONTRACTION JOINT WITH 1.25" DOWEL BARS
 - |-|-|- SAWED LONGITUDINAL JOINT (FOR PAVEMENT POURED MONOLITHICALLY) OR LONGITUDINAL CONSTRUCTION (FOR PAVEMENT POURED IN 2 PIECES)

DRIVER = #PLT05V.L*
 FILE NAME = F:\2014\14001-80\CAD\Plans\14001-80-Int-Intersect.dwg

Farnsworth GROUP, INC.
 2211 West Bradley Avenue
 Champaign, Illinois 61821
 217/352-7408, 217/352-7409 fax

USER NAME = slsisonby
 PRINTER = \$SYSPRINTER_NAME\$
 PLOT SCALE = 10.00' / in.
 PLOT DATE = 3/17/2017

DESIGNED - DSC
 DRAWN - JDK
 CHECKED - JLF
 DATE - 01/26/2017

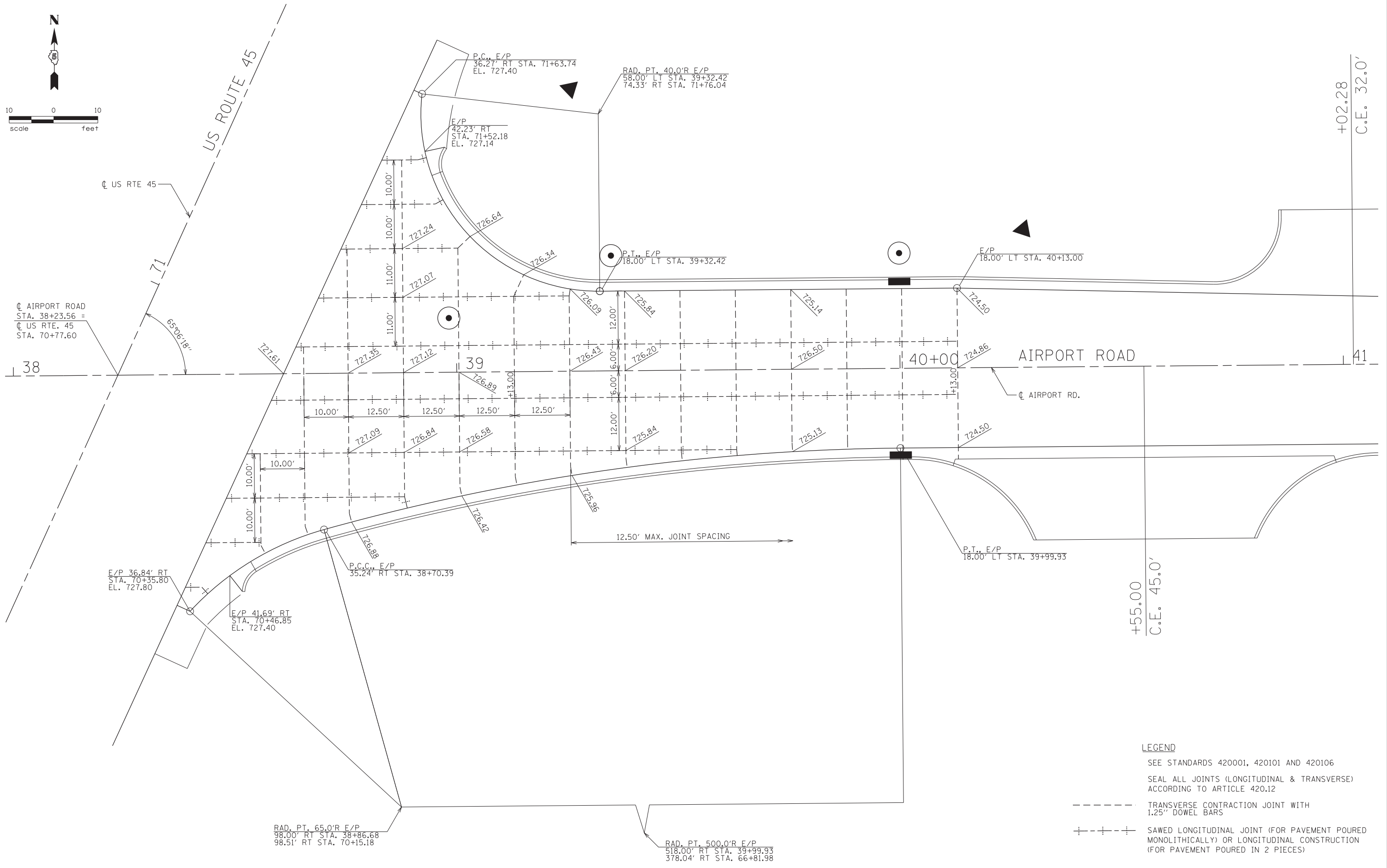
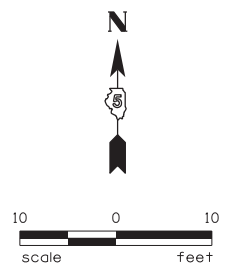
REVISED -
 REVISED -
 REVISED -
 REVISED -

**STATE OF ILLINOIS
 DEPARTMENT OF TRANSPORTATION**

**INTERSECTION DETAIL
 AIRPORT ROAD AND US ROUTE 45**

SCALE: 1"=10' SHEET NO. 2 OF 3 SHEETS STA. TO STA.

F.A.U. RTE.	SECTION	COUNTY	TOTAL SHEETS	SHEET NO.
7190	13-00532-00-PV	CHAMPAIGN	80	41
				CONTRACT NO.
ILLINOIS FED. AID PROJECT				



- LEGEND**
- SEE STANDARDS 420001, 420101 AND 420106
 - SEAL ALL JOINTS (LONGITUDINAL & TRANSVERSE) ACCORDING TO ARTICLE 420.12
 - TRANSVERSE CONTRACTION JOINT WITH 1.25" DOWEL BARS
 - |-|-|- SAWED LONGITUDINAL JOINT (FOR PAVEMENT POURED MONOLITHICALLY) OR LONGITUDINAL CONSTRUCTION (FOR PAVEMENT POURED IN 2 PIECES)

DRIVER = 0PLT05V.L
 FILE NAME = F:\2014\140001-00\CAD\Plans\140001-00-Int-Intersect.dwg

Farnsworth GROUP, INC.
 2211 West Bradley Avenue
 Champaign, Illinois 61821
 217/352-7408, 217/352-7409 fax

USER NAME = slsisonby	DESIGNED - DSC	REVISED -
PRINTER = \$SYSPRINTER_NAME\$	DRAWN - JDK	REVISED -
PLOT SCALE = 10.00' / in.	CHECKED - JLF	REVISED -
PLOT DATE = 3/17/2017	DATE - 01/26/2017	REVISED -

**STATE OF ILLINOIS
 DEPARTMENT OF TRANSPORTATION**

INTERSECTION DETAIL		
AIRPORT ROAD AND US ROUTE 45		
SCALE: 1"=10'	SHEET NO. 3 OF 3 SHEETS	STA. TO STA.

F.A.U. RTE.	SECTION	COUNTY	TOTAL SHEETS	SHEET NO.
7190	13-00532-00-PV	CHAMPAIGN	80	42
CONTRACT NO.				
ILLINOIS FED. AID PROJECT				