

UNIVERSITY OF ILLINOIS EVERITT LABORATORY

PROPOSED ϕ
WRIGHT ST.

STA. 1001+49.74 (ϕ GREEN ST.)
STA. 4019+19.21 (ϕ WRIGHT ST.)

PROPOSED ϕ
GREEN ST.

UNIVERSITY OF ILLINOIS
ILLINI UNION

LEGEND

- INLET FILTERS
- EROSION CONTROL BARRIER

NOTES

1. THE TEMPORARY EROSION CONTROL SYSTEMS SHALL BE INSTALLED AND MAINTAINED BY THE CONTRACTOR AT THE LOCATIONS SHOWN ON PLANS AND AS DIRECTED BY THE ENGINEER. THE PLACEMENT OF THE TEMPORARY EROSION CONTROL SYSTEMS IS NECESSARY TO SATISFY THE REQUIREMENTS OF THE NPDES PERMIT. THE WORK SHALL BE IN ACCORDANCE WITH STANDARD 280001 AND SECTION 280 OF THE STANDARD SPECIFICATIONS.
2. ADDITIONAL TEMPORARY EROSION CONTROL SYSTEMS MAY BE REQUIRED DURING CONSTRUCTION. THE SYSTEMS SHALL BE PLACED AS DIRECTED BY THE ENGINEER AND SHALL BE PAID FOR IN ACCORDANCE WITH SECTION 280 OF THE STANDARD SPECIFICATIONS. THE MAINTENANCE OF THE TEMPORARY EROSION CONTROL SYSTEMS AS DESCRIBED IN ARTICLE 280.05 OF THE STANDARD SPECIFICATIONS WILL NOT BE PAID FOR SEPARATELY BUT SHALL BE INCLUDED IN THE COST OF THE VARIOUS EROSION CONTROL PAY ITEMS.
3. TEMPORARY EROSION CONTROL SEEDING SHALL BE PERFORMED AS DIRECTED BY THE ENGINEER AND IN ACCORDANCE WITH SECTION 280 OF THE STANDARD SPECIFICATIONS. A QUANTITY FOR TEMPORARY EROSION CONTROL SEEDING EQUAL TO THE PERMANENT SODDING AREA HAS BEEN ALLOWED FOR THIS PROJECT.
4. PERMANENT SODDING OF DISTURBED EARTH AREAS SHALL BE PERFORMED AS SOON AS POSSIBLE AFTER COMPLETION OF EACH STAGE OF THE PROJECT TO EXPEDITE THE ESTABLISHMENT OF VEGETATION. SEE THE LANDSCAPE PLANS FOR THE LOCATIONS OF PROPOSED TURF AREAS.

EROSION CONTROL SYSTEMS INSTALLATION SEQUENCE

1. REFER TO THE TRAFFIC CONTROL PLANS FOR THE DETAILED SEQUENCE OF CONSTRUCTION AND STAGING PLAN.
2. INSTALL INLET FILTERS AT EXISTING DRAINAGE STRUCTURES AS SHOWN ON THE PLANS.
3. INSTALL INLET FILTERS AT PROPOSED DRAINAGE STRUCTURES AS SOON AS THEY HAVE BEEN CONSTRUCTED. PLACE TEMPORARY EROSION CONTROL SEEDING AS SOON AS THE ROUGH GRADING IS COMPLETE OR AS DIRECTED BY THE ENGINEER.
4. MAINTAIN ALL EROSION CONTROL SYSTEMS UNTIL SUCH TIME THAT THEY CAN BE REMOVED AS DIRECTED BY THE ENGINEER.
5. PLACE SOD AS SOON AS FINAL GRADING AND SHAPING IS COMPLETE.
6. REMOVE AND CLEANUP ALL REMAINING EROSION CONTROL SYSTEMS AS DIRECTED BY THE ENGINEER.

FILE NAME =
Z:\Plans\sheet\Project1\P1-sht-eros01.dgn

PLOT DATE =
8/25/2016 1:36:35 PM

DESIGNED - BAB
DRAWN - RLA
CHECKED - MPB
DATE - 8/26/2016

REVISED -
REVISED -
REVISED -
REVISED -

STATE OF ILLINOIS
DEPARTMENT OF TRANSPORTATION

PROJECT 1 - GREEN STREET
EROSION CONTROL PLANS

SCALE: 1"=20' SHEET NO. OF SHEETS STA. 1001+71.29 TO STA. 1006+00.00

F.A.U. RTE.	SECTION	COUNTY	TOTAL SHEETS	SHEET NO.
7126	15-00304-01-PV	CHAMPAIGN	236	58
MCORE PROJECT 1		CONTRACT NO. 91539		
JOB NO. C-95-305-16 ILLINOIS FED. AID PROJECT T1G-51810571				

LAYOUT	BAB	11/24/15
DRAWN	RLA	2/4/16
REVIEWED	MPB	3/22/16

FILE NAME =
Z:\Plans\Sheets\Project1\P1-sht-eros02.dgn
PLOT DATE =
8/25/2016 1:36:41 PM

DESIGNED - BAB
DRAWN - RLA
CHECKED - MPB
DATE - 8/26/2016

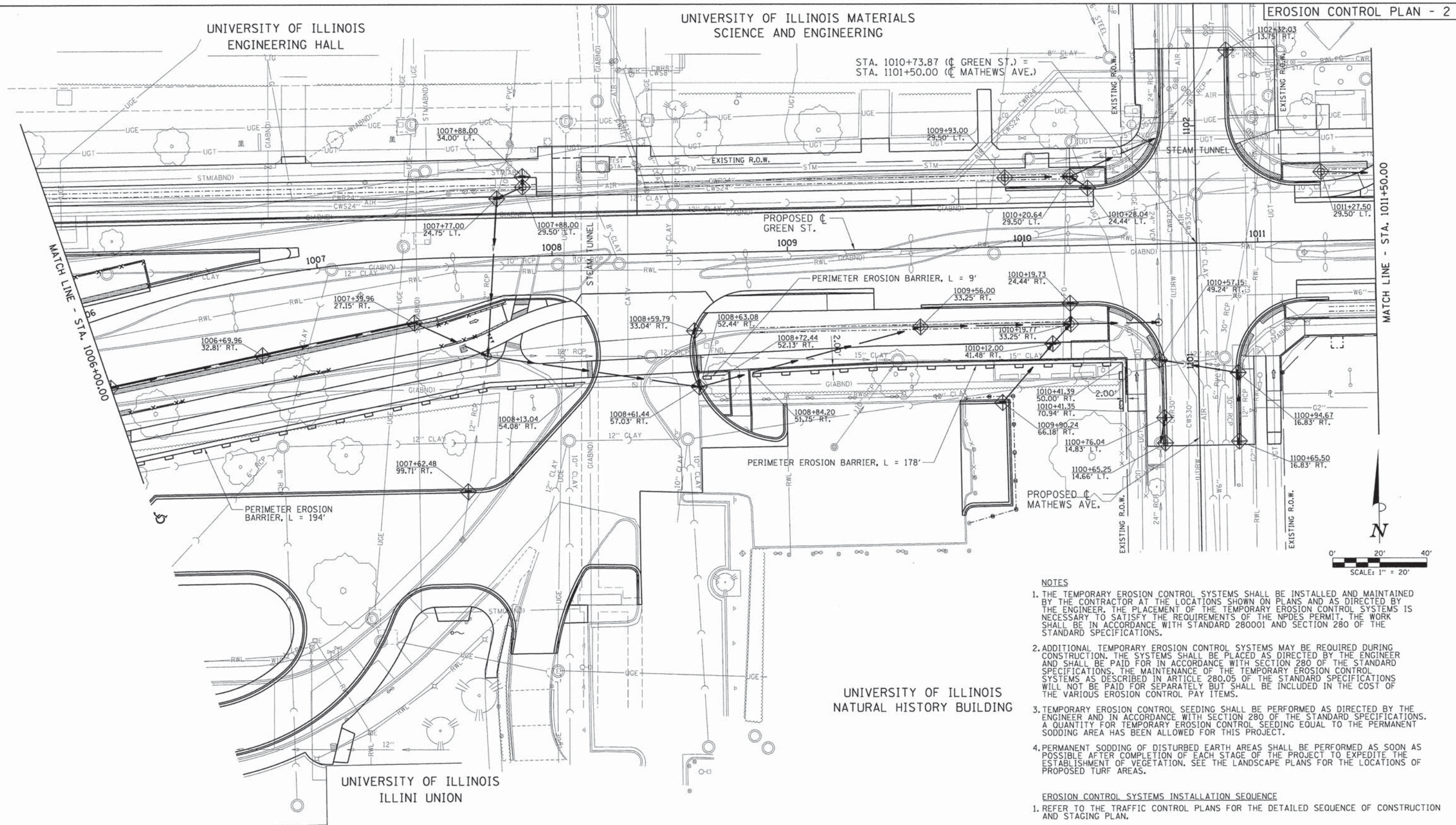
REVISED -
REVISED -
REVISED -
REVISED -

STATE OF ILLINOIS
DEPARTMENT OF TRANSPORTATION

PROJECT 1 - GREEN STREET
EROSION CONTROL PLANS

SCALE: 1"=20' SHEET NO. OF SHEETS STA. 1006+00.00 TO STA. 1011+50.00

F.A.U. RTE.	SECTION	COUNTY	TOTAL SHEETS	SHEET NO.
7126	15-00304-01-PV	CHAMPAIGN	236	59
MCORE PROJECT 1		CONTRACT NO.91539		
JOB NO. C-95-305-16 ILLINOIS FED. AID PROJECT TIG-5181057				



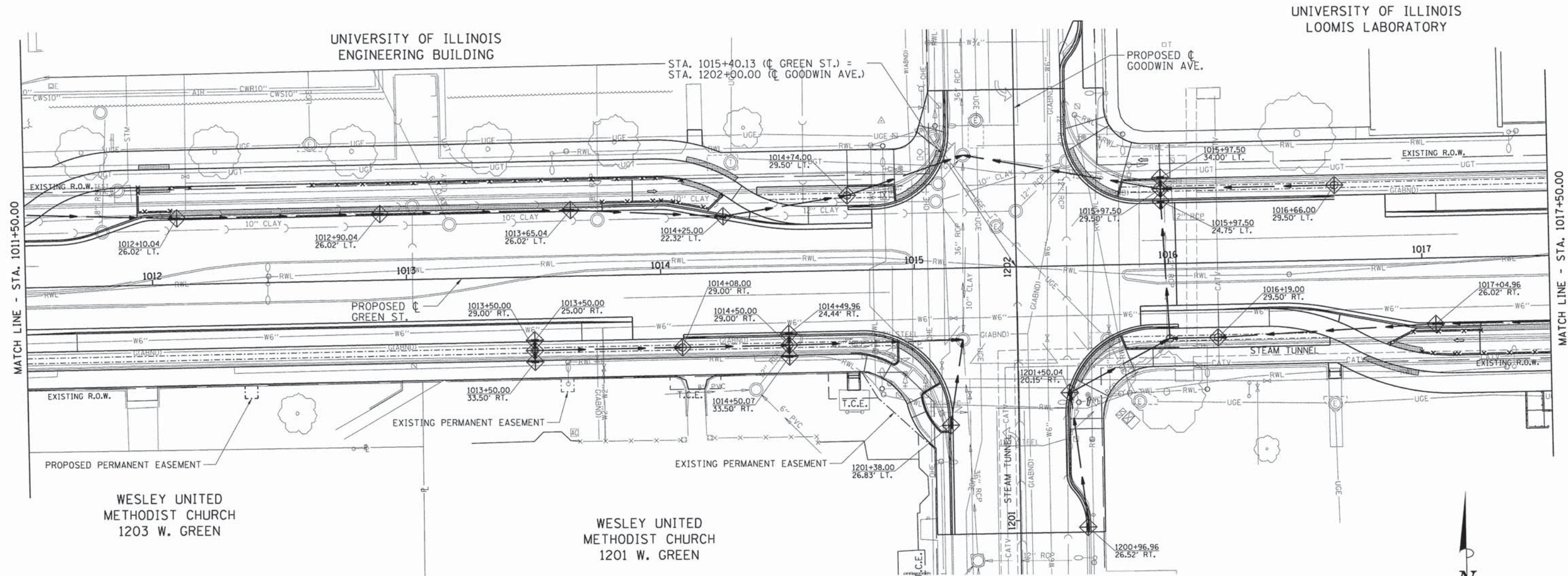
- NOTES**
1. THE TEMPORARY EROSION CONTROL SYSTEMS SHALL BE INSTALLED AND MAINTAINED BY THE CONTRACTOR AT THE LOCATIONS SHOWN ON PLANS AND AS DIRECTED BY THE ENGINEER. THE PLACEMENT OF THE TEMPORARY EROSION CONTROL SYSTEMS IS NECESSARY TO SATISFY THE REQUIREMENTS OF THE NPDES PERMIT. THE WORK SHALL BE IN ACCORDANCE WITH STANDARD 280001 AND SECTION 280 OF THE STANDARD SPECIFICATIONS.
 2. ADDITIONAL TEMPORARY EROSION CONTROL SYSTEMS MAY BE REQUIRED DURING CONSTRUCTION. THE SYSTEMS SHALL BE PLACED AS DIRECTED BY THE ENGINEER AND SHALL BE PAID FOR IN ACCORDANCE WITH SECTION 280 OF THE STANDARD SPECIFICATIONS. THE MAINTENANCE OF THE TEMPORARY EROSION CONTROL SYSTEMS AS DESCRIBED IN ARTICLE 280.05 OF THE STANDARD SPECIFICATIONS WILL NOT BE PAID FOR SEPARATELY BUT SHALL BE INCLUDED IN THE COST OF THE VARIOUS EROSION CONTROL PAY ITEMS.
 3. TEMPORARY EROSION CONTROL SEEDING SHALL BE PERFORMED AS DIRECTED BY THE ENGINEER AND IN ACCORDANCE WITH SECTION 280 OF THE STANDARD SPECIFICATIONS. A QUANTITY FOR TEMPORARY EROSION CONTROL SEEDING EQUAL TO THE PERMANENT SODDING AREA HAS BEEN ALLOWED FOR THIS PROJECT.
 4. PERMANENT SODDING OF DISTURBED EARTH AREAS SHALL BE PERFORMED AS SOON AS POSSIBLE AFTER COMPLETION OF EACH STAGE OF THE PROJECT TO EXPEDITE THE ESTABLISHMENT OF VEGETATION. SEE THE LANDSCAPE PLANS FOR THE LOCATIONS OF PROPOSED TURF AREAS.

- EROSION CONTROL SYSTEMS INSTALLATION SEQUENCE**
1. REFER TO THE TRAFFIC CONTROL PLANS FOR THE DETAILED SEQUENCE OF CONSTRUCTION AND STAGING PLAN.
 2. INSTALL INLET FILTERS AT EXISTING DRAINAGE STRUCTURES AS SHOWN ON THE PLANS.
 3. INSTALL INLET FILTERS AT PROPOSED DRAINAGE STRUCTURES AS SOON AS THEY HAVE BEEN CONSTRUCTED. PLACE TEMPORARY EROSION CONTROL SEEDING AS SOON AS THE ROUGH GRADING IS COMPLETE OR AS DIRECTED BY THE ENGINEER.
 4. MAINTAIN ALL EROSION CONTROL SYSTEMS UNTIL SUCH TIME THAT THEY CAN BE REMOVED AS DIRECTED BY THE ENGINEER.
 5. PLACE SOD AS SOON AS FINAL GRADING AND SHAPING IS COMPLETE.
 6. REMOVE AND CLEANUP ALL REMAINING EROSION CONTROL SYSTEMS AS DIRECTED BY THE ENGINEER.

LEGEND

INLET FILTERS

EROSION CONTROL BARRIER



NOTES

1. THE TEMPORARY EROSION CONTROL SYSTEMS SHALL BE INSTALLED AND MAINTAINED BY THE CONTRACTOR AT THE LOCATIONS SHOWN ON PLANS AND AS DIRECTED BY THE ENGINEER. THE PLACEMENT OF THE TEMPORARY EROSION CONTROL SYSTEMS IS NECESSARY TO SATISFY THE REQUIREMENTS OF THE NPDES PERMIT. THE WORK SHALL BE IN ACCORDANCE WITH STANDARD 280001 AND SECTION 280 OF THE STANDARD SPECIFICATIONS.
2. ADDITIONAL TEMPORARY EROSION CONTROL SYSTEMS MAY BE REQUIRED DURING CONSTRUCTION. THE SYSTEMS SHALL BE PLACED AS DIRECTED BY THE ENGINEER AND SHALL BE PAID FOR IN ACCORDANCE WITH SECTION 280 OF THE STANDARD SPECIFICATIONS. THE MAINTENANCE OF THE TEMPORARY EROSION CONTROL SYSTEMS AS DESCRIBED IN ARTICLE 280.05 OF THE STANDARD SPECIFICATIONS WILL NOT BE PAID FOR SEPARATELY BUT SHALL BE INCLUDED IN THE COST OF THE VARIOUS EROSION CONTROL PAY ITEMS.
3. TEMPORARY EROSION CONTROL SEEDING SHALL BE PERFORMED AS DIRECTED BY THE ENGINEER AND IN ACCORDANCE WITH SECTION 280 OF THE STANDARD SPECIFICATIONS. A QUANTITY FOR TEMPORARY EROSION CONTROL SEEDING EQUAL TO THE PERMANENT SODDING AREA HAS BEEN ALLOWED FOR THIS PROJECT.
4. PERMANENT SODDING OF DISTURBED EARTH AREAS SHALL BE PERFORMED AS SOON AS POSSIBLE AFTER COMPLETION OF EACH STAGE OF THE PROJECT TO EXPEDITE THE ESTABLISHMENT OF VEGETATION. SEE THE LANDSCAPE PLANS FOR THE LOCATIONS OF PROPOSED TURF AREAS.

EROSION CONTROL SYSTEMS INSTALLATION SEQUENCE

1. REFER TO THE TRAFFIC CONTROL PLANS FOR THE DETAILED SEQUENCE OF CONSTRUCTION AND STAGING PLAN.
2. INSTALL INLET FILTERS AT EXISTING DRAINAGE STRUCTURES AS SHOWN ON THE PLANS.
3. INSTALL INLET FILTERS AT PROPOSED DRAINAGE STRUCTURES AS SOON AS THEY HAVE BEEN CONSTRUCTED. PLACE TEMPORARY EROSION CONTROL SEEDING AS SOON AS THE ROUGH GRADING IS COMPLETE OR AS DIRECTED BY THE ENGINEER.
4. MAINTAIN ALL EROSION CONTROL SYSTEMS UNTIL SUCH TIME THAT THEY CAN BE REMOVED AS DIRECTED BY THE ENGINEER.
5. PLACE SOD AS SOON AS FINAL GRADING AND SHAPING IS COMPLETE.
6. REMOVE AND CLEANUP ALL REMAINING EROSION CONTROL SYSTEMS AS DIRECTED BY THE ENGINEER.

LEGEND

- INLET FILTERS
- EROSION CONTROL BARRIER

FILE NAME =
Z:\Plans\Sheets\Project1\P1-sht-eros03.dgn

PLOT DATE =
8/25/2016 1:36:45 PM

DESIGNED - BAB
DRAWN - RLA
CHECKED - MPB
DATE - 8/26/2016

REVISED -
REVISED -
REVISED -
REVISED -

STATE OF ILLINOIS
DEPARTMENT OF TRANSPORTATION

PROJECT 1 - GREEN STREET
EROSION CONTROL PLANS

SCALE: 1"=20' SHEET NO. OF SHEETS STA. 1011+50.00 TO STA. 1017+50.00

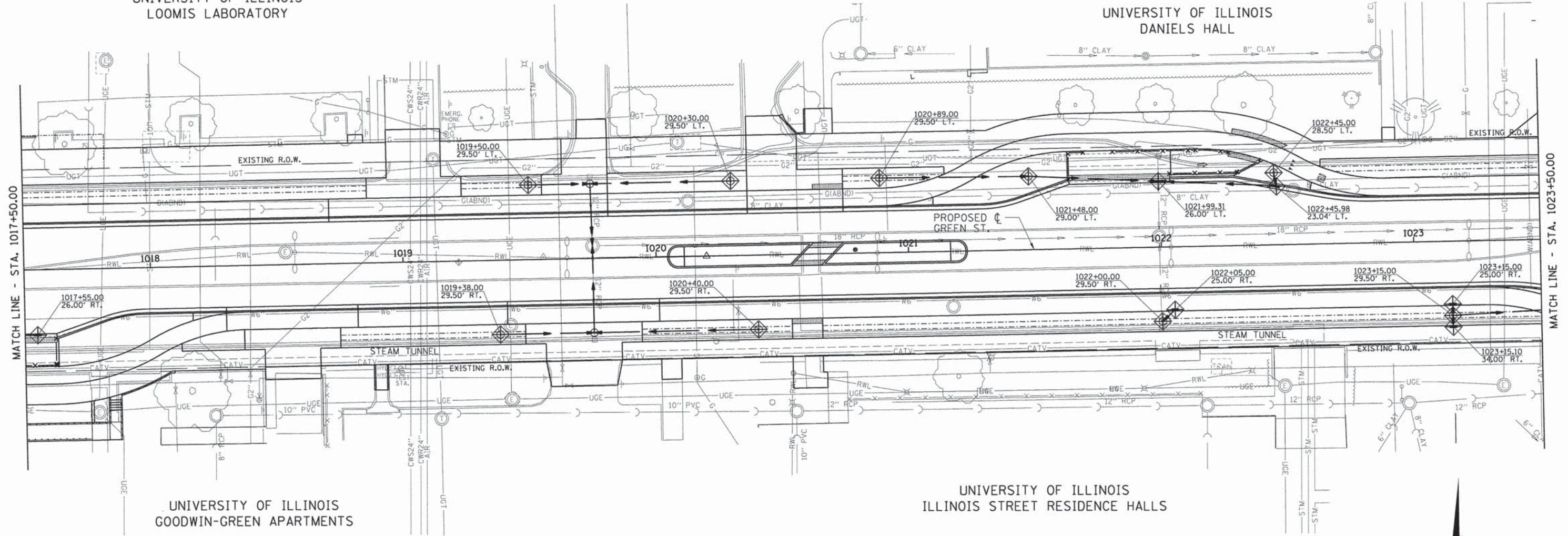
F.A.U. RTE.	SECTION	COUNTY	TOTAL SHEETS	SHEET NO.
7126	15-00304-01-PV	CHAMPAIGN	236	60
MCORE PROJECT 1		CONTRACT NO. 91539		
JOB NO. C-95-305-16 ILLINOIS FED. AID PROJECT T10-5181057				

UNIVERSITY OF ILLINOIS
LOOMIS LABORATORY

UNIVERSITY OF ILLINOIS
DANIELS HALL

UNIVERSITY OF ILLINOIS
GOODWIN-GREEN APARTMENTS

UNIVERSITY OF ILLINOIS
ILLINOIS STREET RESIDENCE HALLS

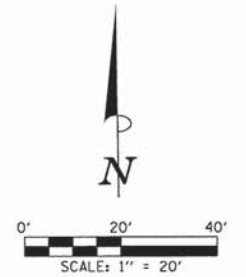


NOTES

1. THE TEMPORARY EROSION CONTROL SYSTEMS SHALL BE INSTALLED AND MAINTAINED BY THE CONTRACTOR AT THE LOCATIONS SHOWN ON PLANS AND AS DIRECTED BY THE ENGINEER. THE PLACEMENT OF THE TEMPORARY EROSION CONTROL SYSTEMS IS NECESSARY TO SATISFY THE REQUIREMENTS OF THE NPDES PERMIT. THE WORK SHALL BE IN ACCORDANCE WITH STANDARD 280001 AND SECTION 280 OF THE STANDARD SPECIFICATIONS.
2. ADDITIONAL TEMPORARY EROSION CONTROL SYSTEMS MAY BE REQUIRED DURING CONSTRUCTION. THE SYSTEMS SHALL BE PLACED AS DIRECTED BY THE ENGINEER AND SHALL BE PAID FOR IN ACCORDANCE WITH SECTION 280 OF THE STANDARD SPECIFICATIONS. THE MAINTENANCE OF THE TEMPORARY EROSION CONTROL SYSTEMS AS DESCRIBED IN ARTICLE 280.05 OF THE STANDARD SPECIFICATIONS WILL NOT BE PAID FOR SEPARATELY BUT SHALL BE INCLUDED IN THE COST OF THE VARIOUS EROSION CONTROL PAY ITEMS.
3. TEMPORARY EROSION CONTROL SEEDING SHALL BE PERFORMED AS DIRECTED BY THE ENGINEER AND IN ACCORDANCE WITH SECTION 280 OF THE STANDARD SPECIFICATIONS. A QUANTITY FOR TEMPORARY EROSION CONTROL SEEDING EQUAL TO THE PERMANENT SODDING AREA HAS BEEN ALLOWED FOR THIS PROJECT.
4. PERMANENT SODDING OF DISTURBED EARTH AREAS SHALL BE PERFORMED AS SOON AS POSSIBLE AFTER COMPLETION OF EACH STAGE OF THE PROJECT TO EXPEDITE THE ESTABLISHMENT OF VEGETATION. SEE THE LANDSCAPE PLANS FOR THE LOCATIONS OF PROPOSED TURF AREAS.

EROSION CONTROL SYSTEMS INSTALLATION SEQUENCE

1. REFER TO THE TRAFFIC CONTROL PLANS FOR THE DETAILED SEQUENCE OF CONSTRUCTION AND STAGING PLAN.
2. INSTALL INLET FILTERS AT EXISTING DRAINAGE STRUCTURES AS SHOWN ON THE PLANS.
3. INSTALL INLET FILTERS AT PROPOSED DRAINAGE STRUCTURES AS SOON AS THEY HAVE BEEN CONSTRUCTED. PLACE TEMPORARY EROSION CONTROL SEEDING AS SOON AS THE ROUGH GRADING IS COMPLETE OR AS DIRECTED BY THE ENGINEER.
4. MAINTAIN ALL EROSION CONTROL SYSTEMS UNTIL SUCH TIME THAT THEY CAN BE REMOVED AS DIRECTED BY THE ENGINEER.
5. PLACE SOD AS SOON AS FINAL GRADING AND SHAPING IS COMPLETE.
6. REMOVE AND CLEANUP ALL REMAINING EROSION CONTROL SYSTEMS AS DIRECTED BY THE ENGINEER.



LEGEND

-  INLET FILTERS
-  EROSION CONTROL BARRIER

FILE NAME =
Z:\Plans\Sheets\Project1\P1-sht-eros04.dgn

PLOT DATE =
8/25/2016 1:36:49 PM

DESIGNED - BAB
DRAWN - RLA
CHECKED - MPB
DATE - 8/26/2016

REVISED -
REVISED -
REVISED -
REVISED -

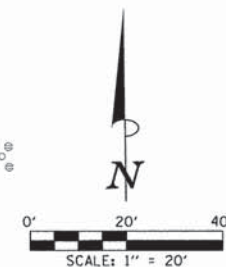
STATE OF ILLINOIS
DEPARTMENT OF TRANSPORTATION

PROJECT 1 - GREEN STREET
EROSION CONTROL PLANS

SCALE: 1"=20' SHEET NO. OF SHEETS STA. 1017+50.00 TO STA. 1023+50.00

F.A.U. RTE.	SECTION	COUNTY	TOTAL SHEETS	SHEET NO.
7126	15-00304-01-PV	CHAMPAIGN	236	61
MCORE PROJECT 1		CONTRACT NO. 91539		
JOB NO. C-95-305-16 ILLINOIS FED. AID PROJECT TIG-5181057				

LAYOUT	BAB	11/24/15
DRAWN	RLA	2/4/16
REVIEWED	MPB	3/22/16



UNIVERSITY OF ILLINOIS
ASTRONOMY BUILDING

STA. 1024+87.04 (C GREEN ST.) =
STA. 1250+00.00 (C GREGORY ST.)

PROPOSED C
LINCOLN AVE.

MOBIL
810 W. GREEN

HENDRICK HOUSE
904 W. GREEN

PROPOSED C
GREEN ST.

UNIVERSITY OF ILLINOIS

UNIVERSITY OF ILLINOIS
STREET RESIDENCE HALLS

MATCH LINE - STA. 1023+50.00

MATCH LINE - STA. 1029+50.00

NOTES

1. THE TEMPORARY EROSION CONTROL SYSTEMS SHALL BE INSTALLED AND MAINTAINED BY THE CONTRACTOR AT THE LOCATIONS SHOWN ON PLANS AND AS DIRECTED BY THE ENGINEER. THE PLACEMENT OF THE TEMPORARY EROSION CONTROL SYSTEMS IS NECESSARY TO SATISFY THE REQUIREMENTS OF THE NPDES PERMIT. THE WORK SHALL BE IN ACCORDANCE WITH STANDARD 280001 AND SECTION 280 OF THE STANDARD SPECIFICATIONS.
2. ADDITIONAL TEMPORARY EROSION CONTROL SYSTEMS MAY BE REQUIRED DURING CONSTRUCTION. THE SYSTEMS SHALL BE PLACED AS DIRECTED BY THE ENGINEER AND SHALL BE PAID FOR IN ACCORDANCE WITH SECTION 280 OF THE STANDARD SPECIFICATIONS. THE MAINTENANCE OF THE TEMPORARY EROSION CONTROL SYSTEMS AS DESCRIBED IN ARTICLE 280.05 OF THE STANDARD SPECIFICATIONS WILL NOT BE PAID FOR SEPARATELY BUT SHALL BE INCLUDED IN THE COST OF THE VARIOUS EROSION CONTROL PAY ITEMS.
3. TEMPORARY EROSION CONTROL SEEDING SHALL BE PERFORMED AS DIRECTED BY THE ENGINEER AND IN ACCORDANCE WITH SECTION 280 OF THE STANDARD SPECIFICATIONS. A QUANTITY FOR TEMPORARY EROSION CONTROL SEEDING EQUAL TO THE PERMANENT SODDING AREA HAS BEEN ALLOWED FOR THIS PROJECT.
4. PERMANENT SODDING OF DISTURBED EARTH AREAS SHALL BE PERFORMED AS SOON AS POSSIBLE AFTER COMPLETION OF EACH STAGE OF THE PROJECT TO EXPEDITE THE ESTABLISHMENT OF VEGETATION. SEE THE LANDSCAPE PLANS FOR THE LOCATIONS OF PROPOSED TURF AREAS.

EROSION CONTROL SYSTEMS INSTALLATION SEQUENCE

1. REFER TO THE TRAFFIC CONTROL PLANS FOR THE DETAILED SEQUENCE OF CONSTRUCTION AND STAGING PLAN.
2. INSTALL INLET FILTERS AT EXISTING DRAINAGE STRUCTURES AS SHOWN ON THE PLANS.
3. INSTALL INLET FILTERS AT PROPOSED DRAINAGE STRUCTURES AS SOON AS THEY HAVE BEEN CONSTRUCTED. PLACE TEMPORARY EROSION CONTROL SEEDING AS SOON AS THE ROUGH GRADING IS COMPLETE OR AS DIRECTED BY THE ENGINEER.
4. MAINTAIN ALL EROSION CONTROL SYSTEMS UNTIL SUCH TIME THAT THEY CAN BE REMOVED AS DIRECTED BY THE ENGINEER.
5. PLACE SOD AS SOON AS FINAL GRADING AND SHAPING IS COMPLETE.
6. REMOVE AND CLEANUP ALL REMAINING EROSION CONTROL SYSTEMS AS DIRECTED BY THE ENGINEER.

LEGEND

- INLET FILTERS
 EROSION CONTROL BARRIER

FILE NAME =
Z:\Plans\Sheets\Project1\P1-sht-eros05.dgn

PLOT DATE =
8/25/2016 1:36:52 PM

DESIGNED - BAB
DRAWN - RLA
CHECKED - MPB
DATE - 8/26/2016

REVISED -
REVISED -
REVISED -
REVISED -

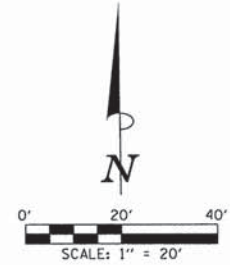
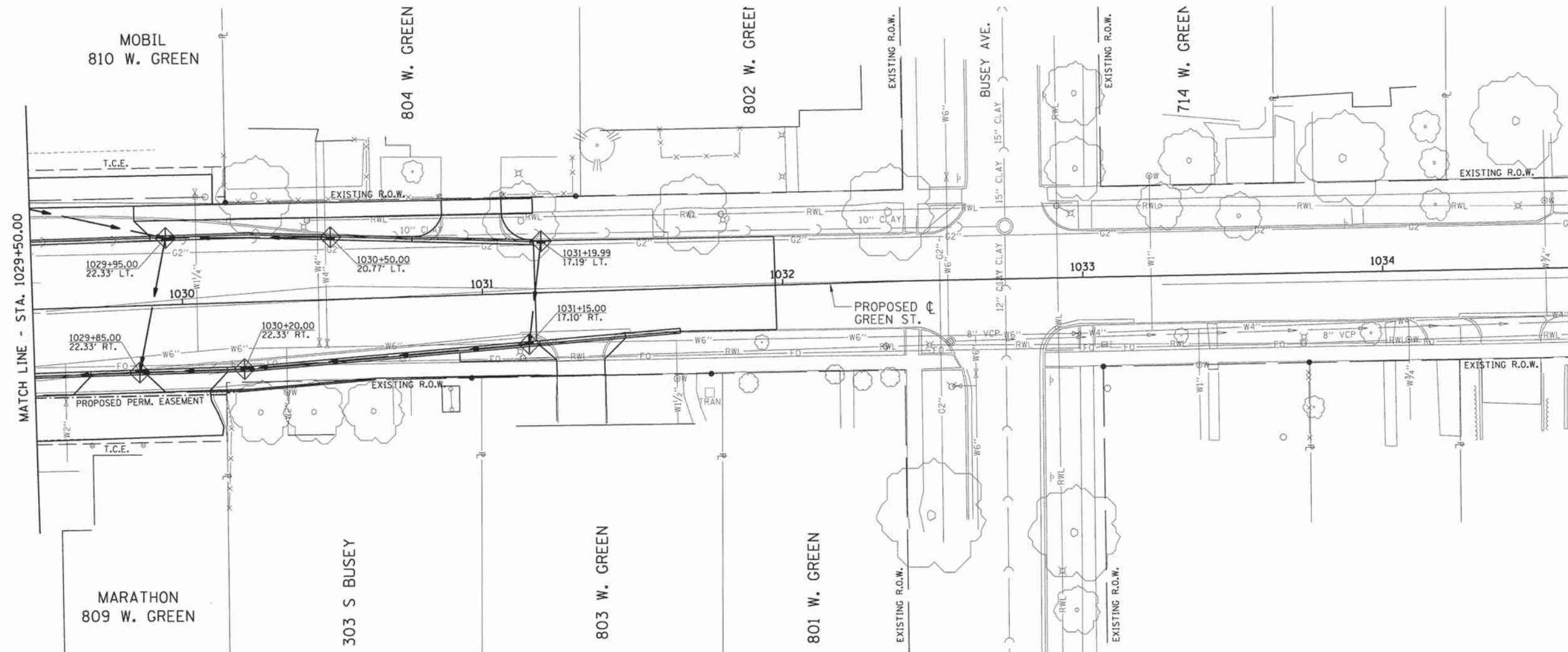
STATE OF ILLINOIS
DEPARTMENT OF TRANSPORTATION

PROJECT 1 - GREEN STREET
EROSION CONTROL PLANS

SCALE: 1"=20' SHEET NO. OF SHEETS STA. 1023+50.00 TO STA. 1029+50.00

F.A.U. RTE.	SECTION	COUNTY	TOTAL SHEETS	SHEET NO.
7126	15-00304-01-PV	CHAMPAIGN	236	62

MCORE PROJECT 1 CONTRACT NO. 91539
JOB NO. C-95-305-16 ILLINOIS FED. AID PROJECT TIG-51810571



NOTES

1. THE TEMPORARY EROSION CONTROL SYSTEMS SHALL BE INSTALLED AND MAINTAINED BY THE CONTRACTOR AT THE LOCATIONS SHOWN ON PLANS AND AS DIRECTED BY THE ENGINEER. THE PLACEMENT OF THE TEMPORARY EROSION CONTROL SYSTEMS IS NECESSARY TO SATISFY THE REQUIREMENTS OF THE NPDES PERMIT. THE WORK SHALL BE IN ACCORDANCE WITH STANDARD 280001 AND SECTION 280 OF THE STANDARD SPECIFICATIONS.
2. ADDITIONAL TEMPORARY EROSION CONTROL SYSTEMS MAY BE REQUIRED DURING CONSTRUCTION. THE SYSTEMS SHALL BE PLACED AS DIRECTED BY THE ENGINEER AND SHALL BE PAID FOR IN ACCORDANCE WITH SECTION 280 OF THE STANDARD SPECIFICATIONS. THE MAINTENANCE OF THE TEMPORARY EROSION CONTROL SYSTEMS AS DESCRIBED IN ARTICLE 280.05 OF THE STANDARD SPECIFICATIONS WILL NOT BE PAID FOR SEPARATELY BUT SHALL BE INCLUDED IN THE COST OF THE VARIOUS EROSION CONTROL PAY ITEMS.
3. TEMPORARY EROSION CONTROL SEEDING SHALL BE PERFORMED AS DIRECTED BY THE ENGINEER AND IN ACCORDANCE WITH SECTION 280 OF THE STANDARD SPECIFICATIONS. A QUANTITY FOR TEMPORARY EROSION CONTROL SEEDING EQUAL TO THE PERMANENT SODDING AREA HAS BEEN ALLOWED FOR THIS PROJECT.
4. PERMANENT SODDING OF DISTURBED EARTH AREAS SHALL BE PERFORMED AS SOON AS POSSIBLE AFTER COMPLETION OF EACH STAGE OF THE PROJECT TO EXPEDITE THE ESTABLISHMENT OF VEGETATION. SEE THE LANDSCAPE PLANS FOR THE LOCATIONS OF PROPOSED TURF AREAS.

EROSION CONTROL SYSTEMS INSTALLATION SEQUENCE

1. REFER TO THE TRAFFIC CONTROL PLANS FOR THE DETAILED SEQUENCE OF CONSTRUCTION AND STAGING PLAN.
2. INSTALL INLET FILTERS AT EXISTING DRAINAGE STRUCTURES AS SHOWN ON THE PLANS.
3. INSTALL INLET FILTERS AT PROPOSED DRAINAGE STRUCTURES AS SOON AS THEY HAVE BEEN CONSTRUCTED. PLACE TEMPORARY EROSION CONTROL SEEDING AS SOON AS THE ROUGH GRADING IS COMPLETE OR AS DIRECTED BY THE ENGINEER.
4. MAINTAIN ALL EROSION CONTROL SYSTEMS UNTIL SUCH TIME THAT THEY CAN BE REMOVED AS DIRECTED BY THE ENGINEER.
5. PLACE SOD AS SOON AS FINAL GRADING AND SHAPING IS COMPLETE.
6. REMOVE AND CLEANUP ALL REMAINING EROSION CONTROL SYSTEMS AS DIRECTED BY THE ENGINEER.

LEGEND

-  INLET FILTERS
-  EROSION CONTROL BARRIER

LAYOUT	BAB	11/24/15
DRAWN	RLA	2/4/16
REVIEWED	MPB	3/22/16

FILE NAME =
Z:\Plans\Sheets\Project1\P1-sht-eros06.dgn

PLOT DATE =
8/25/2016 1:36:56 PM

DESIGNED - BAB
DRAWN - RLA
CHECKED - MPB
DATE - 8/26/2016

REVISED -
REVISED -
REVISED -
REVISED -

STATE OF ILLINOIS
DEPARTMENT OF TRANSPORTATION

PROJECT 1 - GREEN STREET
EROSION CONTROL PLANS

SCALE: 1"=20' SHEET NO. OF SHEETS STA. 1029+50.00 TO STA. 1033+55.00

F.A.U. RTE.	SECTION	COUNTY	TOTAL SHEETS	SHEET NO.
7126	15-00304-01-PV	CHAMPAIGN	236	63
MCORE PROJECT 1		CONTRACT NO. 91539		
JOB NO. C-95-305-16		ILLINOIS FED. AID PROJECT T16-5181057		