

Shonkwiler, Craig

From: Shonkwiler, Craig
Sent: Thursday, May 18, 2017 4:08 PM
Subject: MCORE Project 1 Update #5
Attachments: MCORE Project 1 - Road Closure Press Release.pdf; MCORE Project 1 - Road Closure Press Release - map.pdf

MCORE Project 1 Email List Participants: *Update #5*

The attached press release and map is provided for your information.

For detailed information about MCORE Project 1 please visit <http://www.urbanaininois.us/MCOREProject1>

For information about MCORE Projects 1, 2, 3, 4 and 5 please visit <http://www.mcoreproject.com/>

Thank you,

Craig E. Shonkwiler, P.E.

Assistant City Engineer
City of Urbana
Public Works Department
Engineering Division
706 South Glover Avenue
Urbana, Illinois 61802
217-384-2385 Office
217-384-2400 Fax
ceshonkwiler@urbanaininois.us



URBANA PUBLIC WORKS DEPARTMENT
706 South Glover
Urbana, Illinois 61802



DATE: May 18, 2017

DEVELOPED BY: Mr. Craig E. Shonkwiler, Assistant City Engineer

AUTHORIZED BY: Mr. William R. Gray, Public Works Director

RE: MCORE Project 1
Road Closure - Green Street from Wright Street to Goodwin Avenue
Reverse Traffic Direction – Mathews Avenue from Springfield Avenue
to Green Street

Green Street will be closed to through traffic from Wright Street to Goodwin Avenue at 7:00 am Monday, May 22, 2017 until further notice. The traffic direction on Mathews Avenue from Springfield Avenue to Green Street will also be reversed to southbound one-way at 7:00 am Monday, May 22.

During the closure of Green Street eastbound/westbound traffic on Green Street will use a marked detour route via Wright Street-Springfield Avenue-Goodwin Avenue. Southbound traffic at the Mathews Avenue and Green Street intersection will be maintained at all times. Access to the Illini Union and Natural History Building on Green Street will be available at all times via Mathews Avenue. Pedestrian access for the CUMTD bus stop system will be available at bus stops provided on Springfield Avenue and Goodwin Avenue in the vicinity of the project.

The closure of Green Street will allow for the first major street reconstruction phase of the Multimodal Corridor Enhancement Project (MCORE) Project 1 to occur. The MCORE Project will improve access for all modes of transportation on the University of Illinois campus and provide direct connections to downtown Urbana and Champaign. The project is funded in part by a Federal Transportation Investment Generating Economic Recovery (TIGER) Grant from the U.S. Department of Transportation.

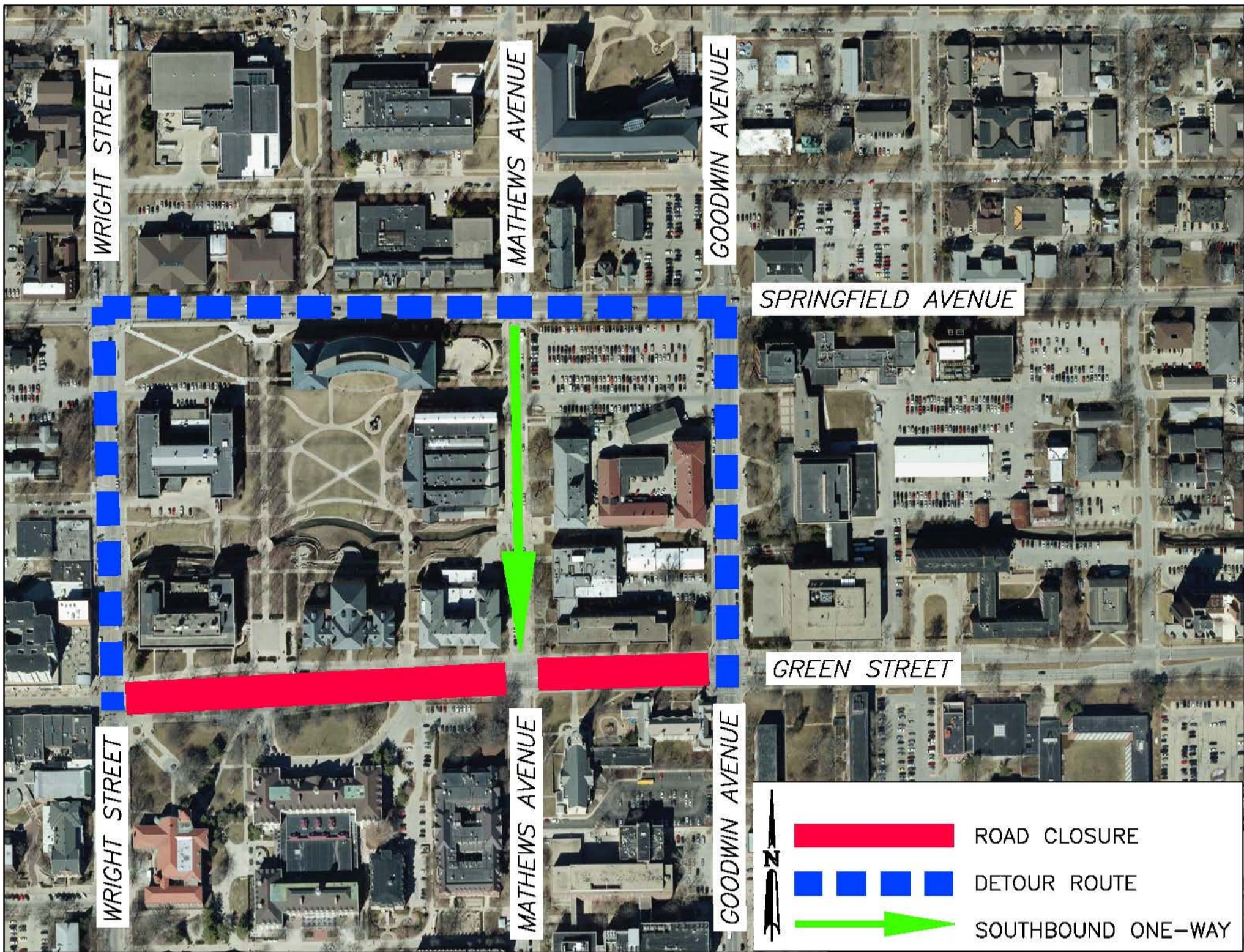
We apologize for any inconvenience this may cause.

Further information about this project can be found on the City website at <http://www.urbanaininois.us/MCOREProject1>

For additional information, please contact Mr. William Gray at 217-384-2342 or wgray@urbanaininois.us.

###





WRIGHT STREET

MATHEWS AVENUE

GOODWIN AVENUE

SPRINGFIELD AVENUE

GREEN STREET

WRIGHT STREET

MATHEWS AVENUE

GOODWIN AVENUE



ROAD CLOSURE



DETOUR ROUTE



SOUTHBOUND ONE-WAY