

URBANA POLICE DEPARTMENT REPORT TO CITY COUNCIL CONCERNING TRAFFIC STOP DATA

URBANA POLICE DEPARTMENT | CRIME ANALYSIS

PRESENTERS:

Melissa Haynes

Crime Analyst, Urbana Police Department

Pat Connolly

Chief, Urbana Police Department



Traffic Stop Data | Overview

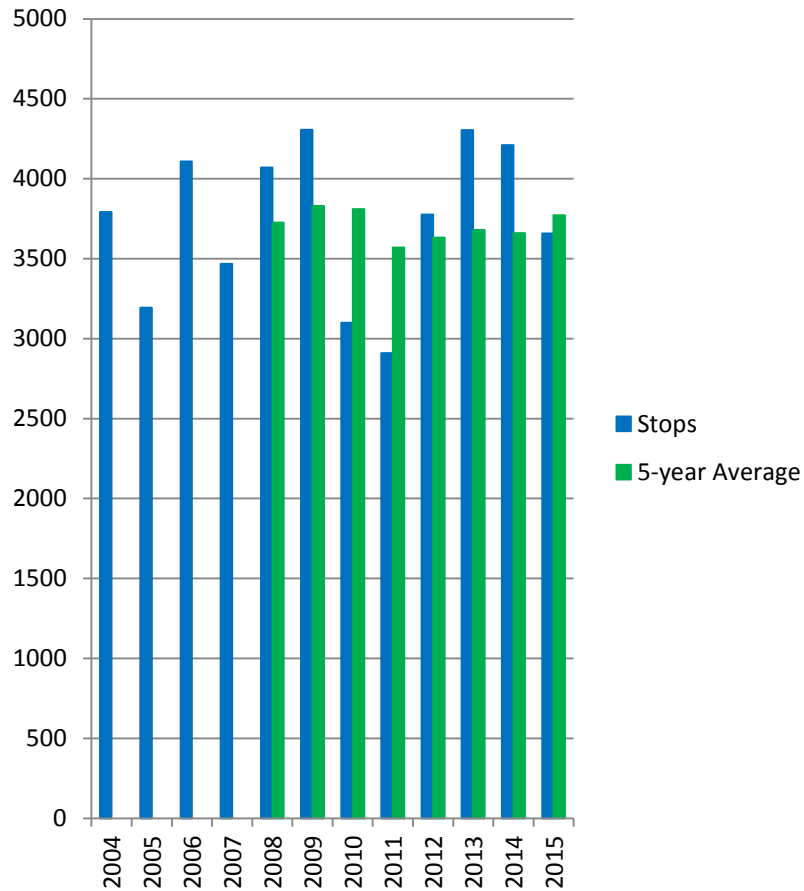
This presentation covers information from traffic stops conducted by the Urbana Police Department from January 1, 2004 to September 30, 2016:

- All traffic stops
- Benchmarks
- Officers' decisions to stop
- Outcomes of traffic stops
- Individuals stopped multiple times
- Searches conducted during traffic stops

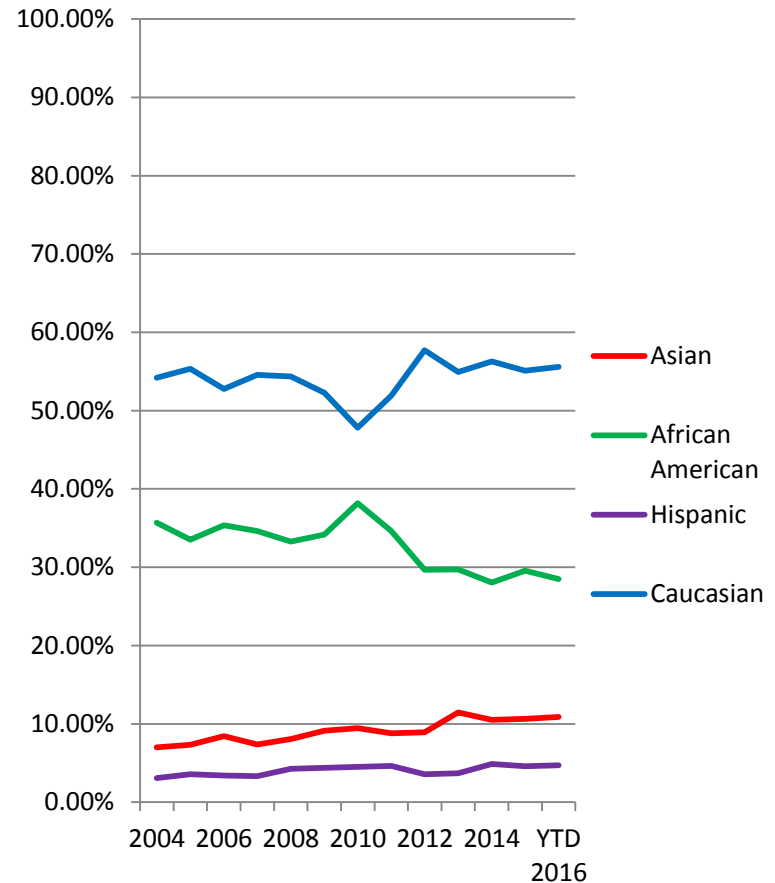
All information presented is included in the report.



Traffic Stops by Year



Traffic Stops by Race and Year

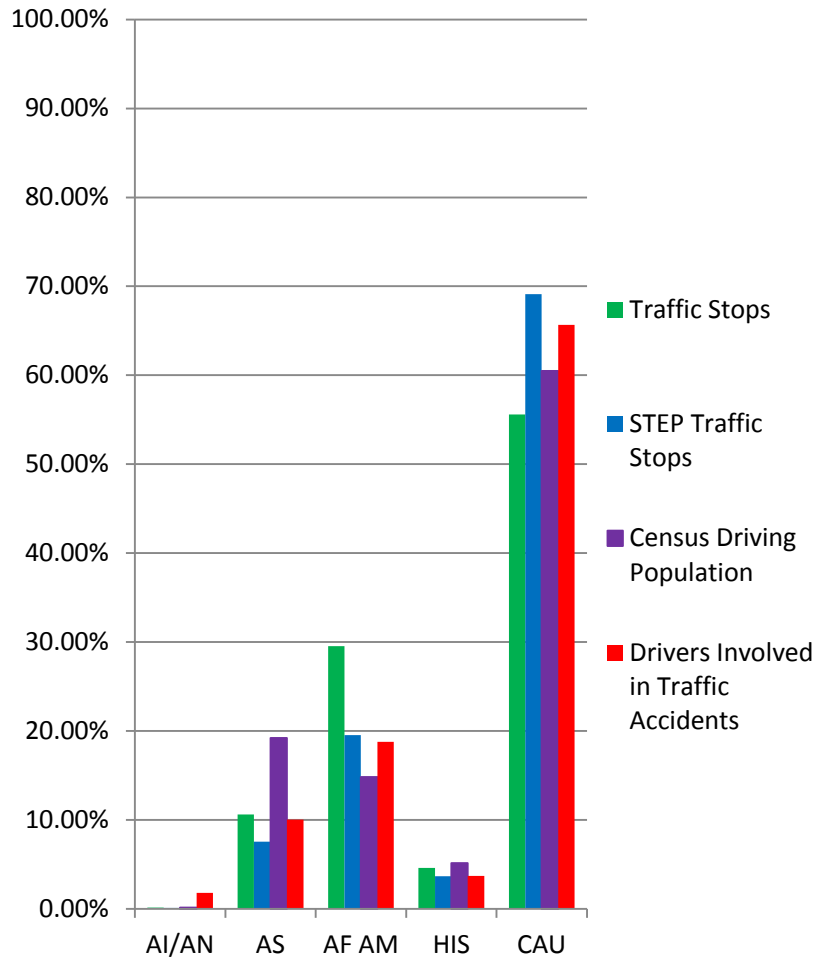


Recommendations for Tracking

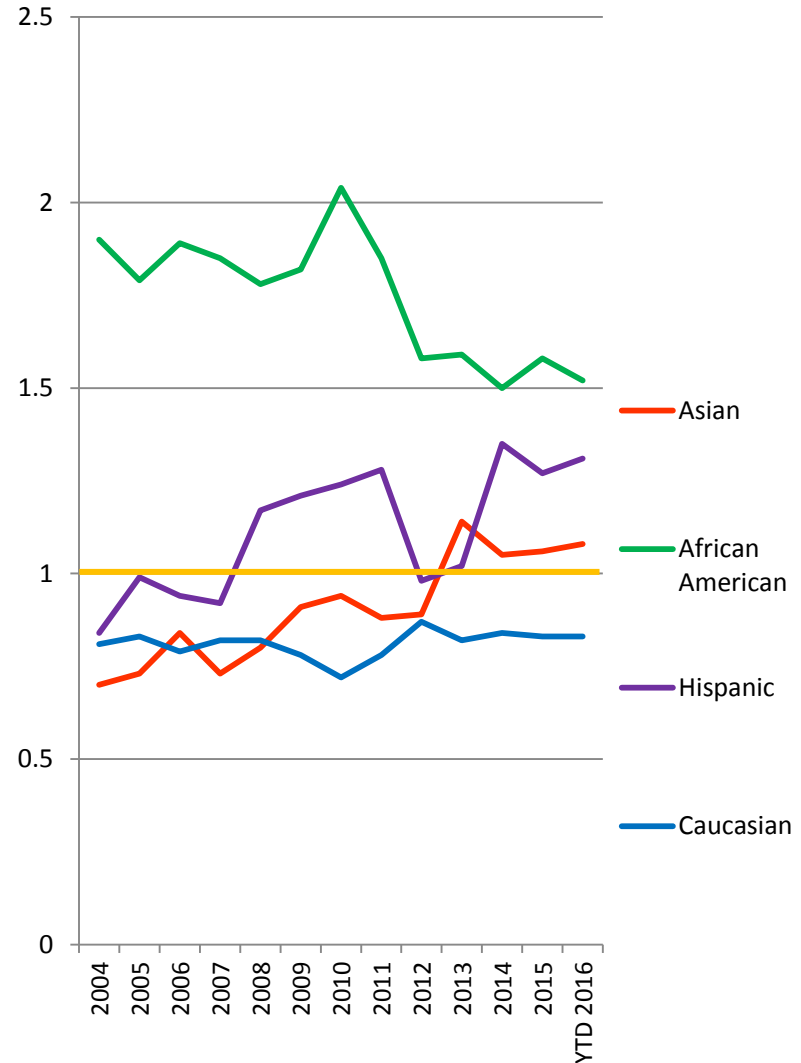
- Continue to compile number of traffic stops and races of drivers by year to monitor substantial changes



Driving Population Benchmarks



Yearly Disparity Ratios (Accidents)



Urbana Police-Citizen Contacts | 2015 Disparity Ratios

	"Arrestee"*	Listed Offender*	Listed Victim	Witness*	Reporting Person*	Field Interviewee*
Asian	0.41	0.30	0.34	0.09	0.13	0.23
African American	2.47	3.18	2.61	2.17	1.45	2.69
Hispanic	0.92	0.48	0.56	1.20	1.49	0.67
Native American	0.00	0.01	0.00	0.00	0.00	0.00
Caucasian	0.79	0.65	0.79	0.90	1.09	0.79
% Urbana Resident	48.72%	51.61%	76.82%	57.82%	55.19%	Too many missing

*Interpret with caution, as the benchmark is the Census and about half of the individuals in these categories are Urbana residents.

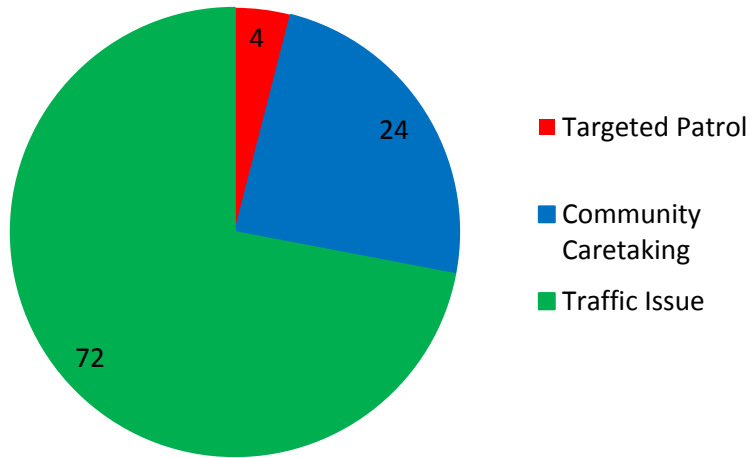
Recommendations for Tracking

- Continue to track traffic stop disparity using accident benchmark
- Spatial analysis
- Disparity on all police contacts:
 - Remove drivers stopped from traffic stops from analysis
 - Additional analysis on field interviews/pedestrian stops

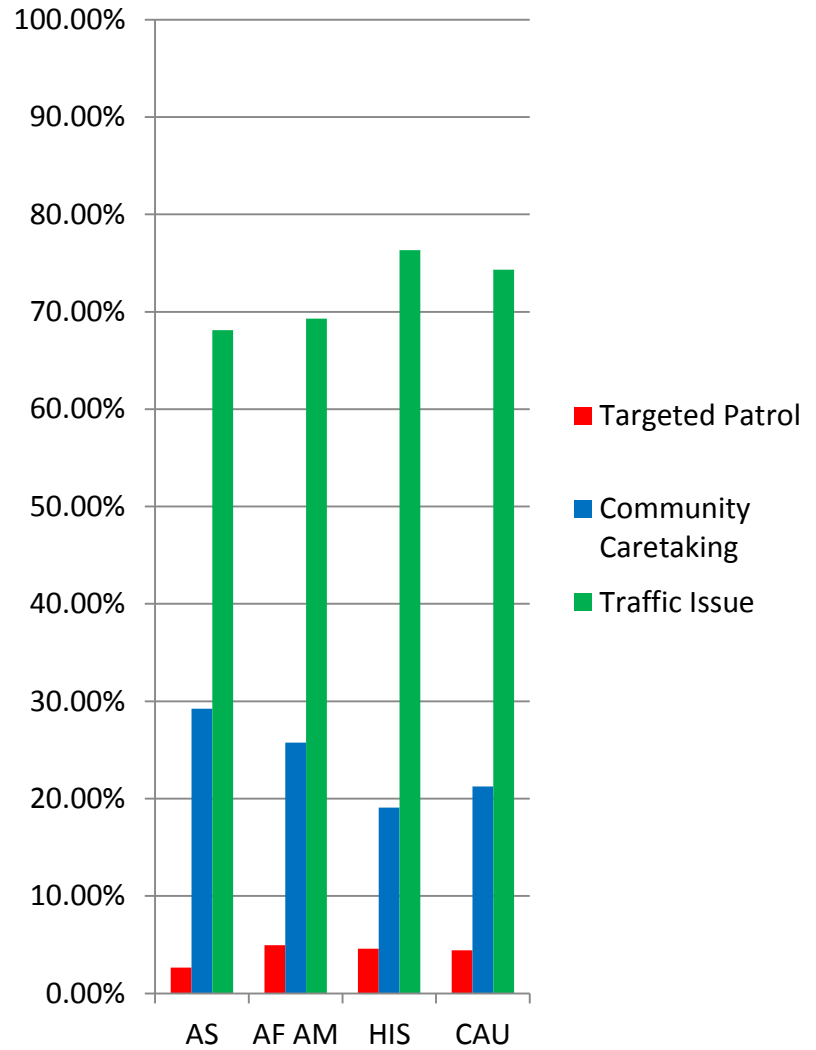


Motivation for Traffic Stops

January 1 – September 30, 2016

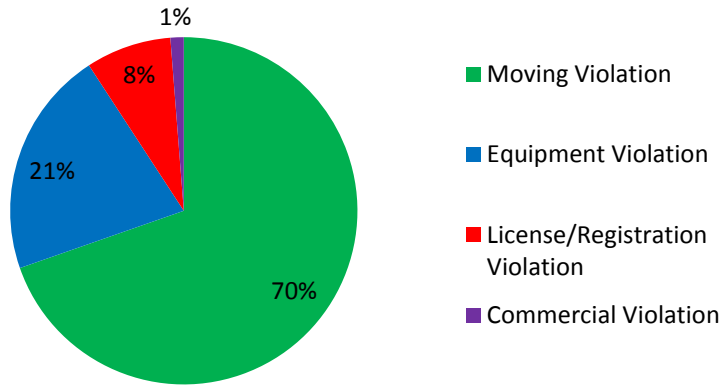


Motivation for Traffic Stop by Race

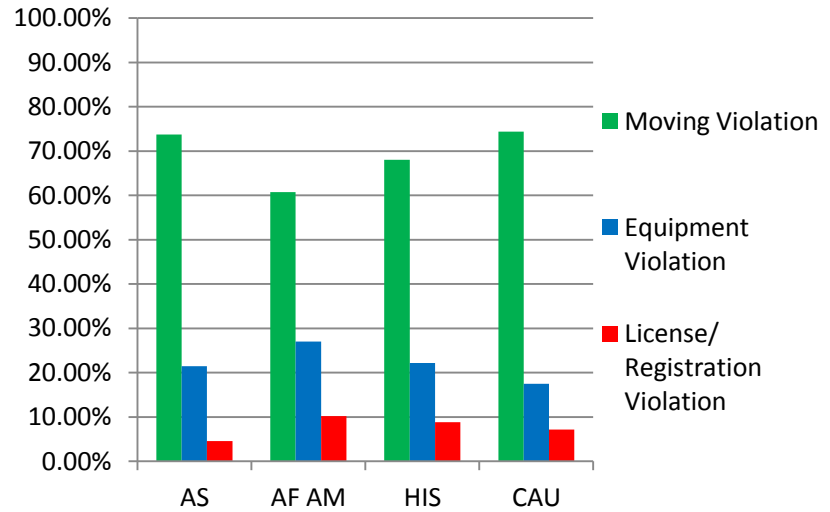


Reason for Stop

January 1, 2004 – September 30, 2016



Reason for Traffic Stop by Race

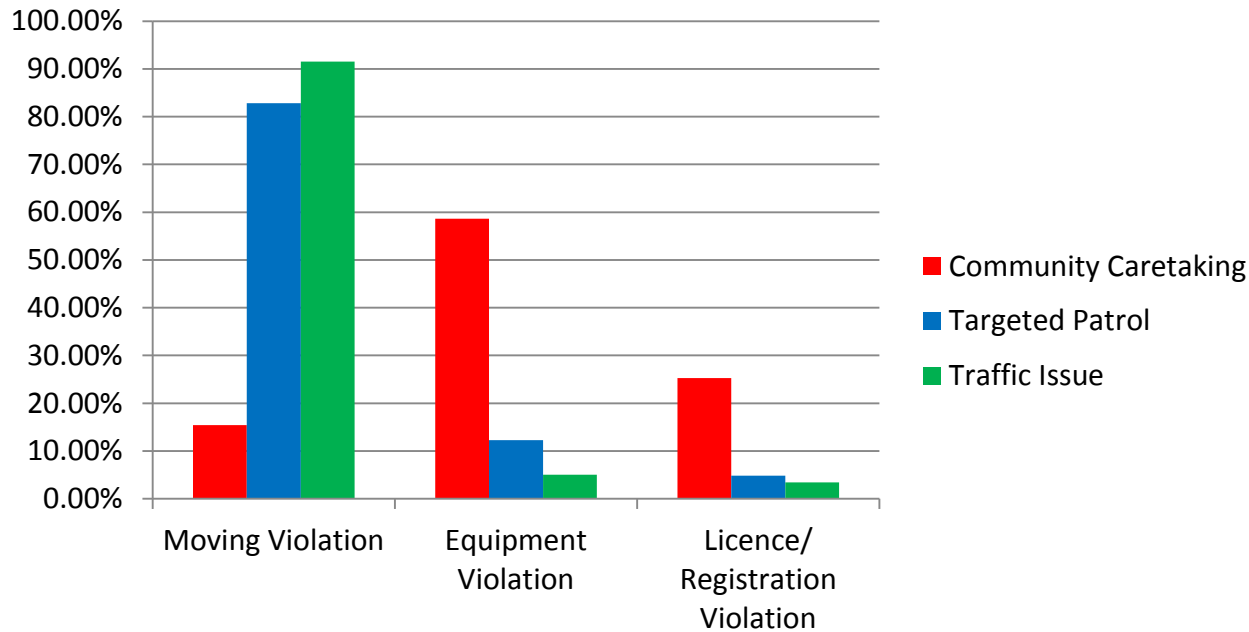


Reason for Stop by Race and Year

Reason for Stop	2008	2009	2010	2011	2012	2013	2014	2015	2016 YTD
Moving Violation									
Asian	75.91%	70.74%	78.84%	75.00%	77.15%	70.39%	69.07%	68.12%	68.11%
African American	56.90%	52.55%	55.20%	61.07%	63.96%	58.95%	60.76%	63.83%	72.08%
Hispanic	61.85%	58.73%	66.19%	68.89%	71.64%	57.86%	69.90%	74.40%	79.39%
Caucasian	75.43%	71.12%	70.11%	75.76%	77.94%	72.56%	72.27%	75.84%	76.40%
Equipment Violation									
Asian	19.82%	23.16%	19.11%	22.27%	19.88%	23.12%	24.38%	26.22%	24.58%
African American	33.58%	34.67%	31.19%	25.62%	25.25%	26.66%	25.93%	23.50%	20.69%
Hispanic	31.21%	28.57%	23.02%	19.26%	16.42%	25.16%	22.82%	20.24%	12.21%
Caucasian	18.47%	21.15%	21.52%	15.70%	16.51%	18.86%	18.57%	15.38%	14.89%
License/Registration Violation									
Asian	3.96%	6.11%	2.05%	2.73%	2.97%	6.49%	6.55%	5.66%	7.31%
African American	7.82%	12.03%	12.51%	12.71%	10.79%	14.39%	13.31%	12.67%	7.23%
Hispanic	5.20%	11.11%	10.79%	11.11%	11.94%	16.98%	7.28%	5.36%	8.40%
Caucasian	5.28%	7.42%	8.30%	8.34%	5.55%	8.58%	9.16%	8.78%	8.71%



Motivation and Reason for Stops



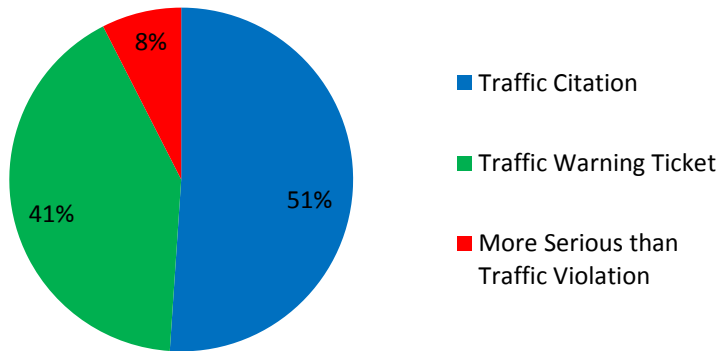
Recommendations for Tracking

- Continue to monitor for changes over time, particularly equipment and license/registration violations as disparity is greatest here
- Add a checkbox to the traffic citation/warning sticker to capture pretextual motivation

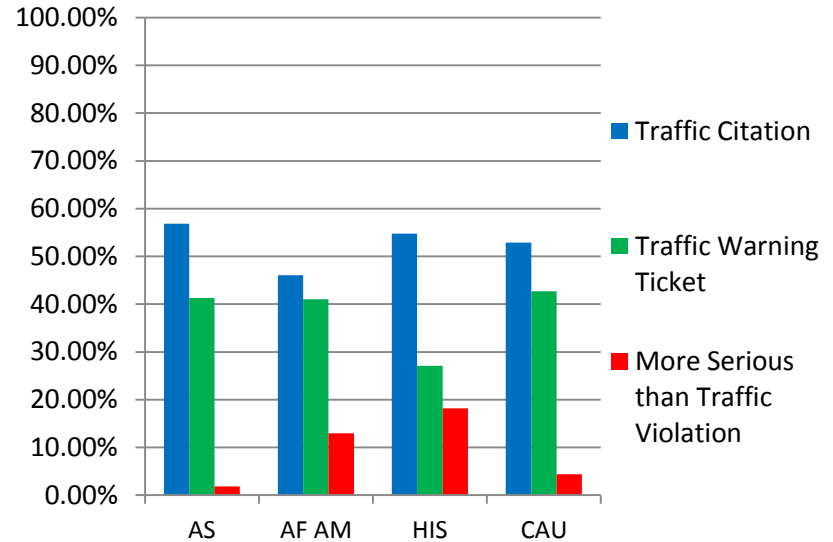


Outcomes of Traffic Stops

January 1, 2004 – September 30, 2016



Outcomes of Traffic Stop by Race

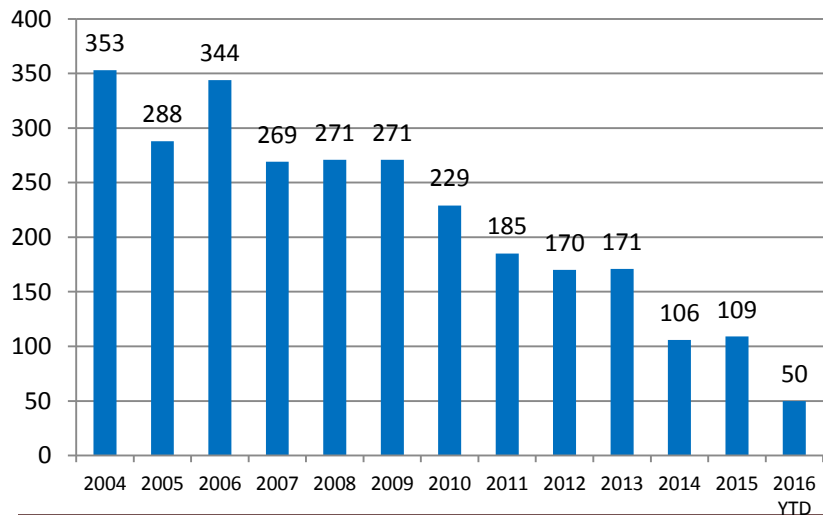


Disparity Ratio of Outcomes of Stop by Race and Year

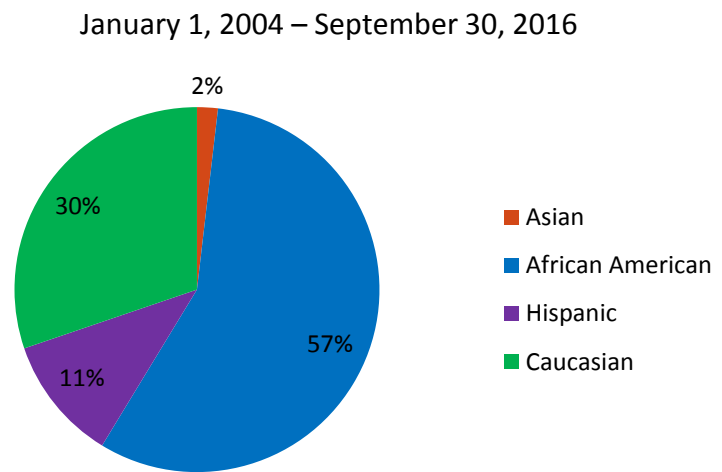
Outcome	2008	2009	2010	2011	2012	2013	2014	2015	2016 YTD
Citation									
Asian	1.18	1.15	1.24	1.10	1.09	1.05	1.04	1.00	0.91
African American	0.87	0.92	0.94	0.90	0.93	0.85	0.89	0.90	0.96
Hispanic	1.07	0.96	0.90	0.87	0.87	1.28	1.25	1.14	1.13
Caucasian	1.05	1.03	1.01	1.06	1.03	1.06	1.03	1.04	1.04
Traffic Warning									
Asian	0.91	0.95	0.85	1.02	1.02	1.04	1.00	1.10	1.22
African American	1.05	1.00	0.96	0.98	0.92	1.03	1.04	1.01	0.99
Hispanic	0.59	0.57	0.47	0.66	0.88	0.60	0.71	0.76	0.76
Caucasian	1.02	1.04	1.11	1.04	1.05	1.00	1.01	1.00	0.99
More Serious than Traffic									
Asian	0.25	0.30	0.28	0.28	0.05	0.27	0.67	0.15	0.11
African American	1.61	1.52	1.54	1.68	2.14	2.03	1.87	1.99	1.99
Hispanic	2.41	3.68	4.10	3.32	2.83	1.81	1.22	1.51	1.78
Caucasian	0.63	0.56	0.42	0.46	0.45	0.54	0.61	0.59	0.61



Arrests from Traffic Stops



Arrests from Traffic Stops by Race



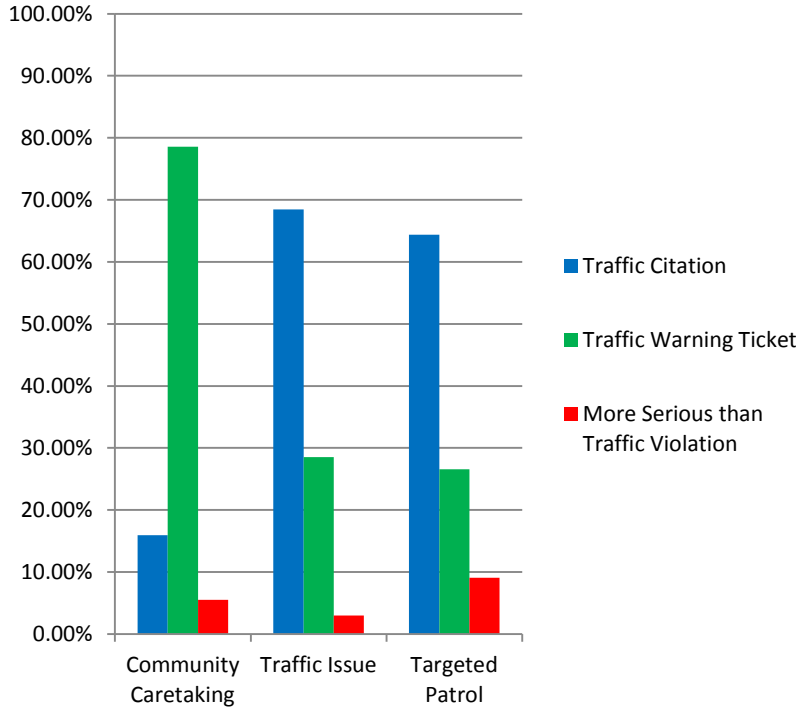
Arrested Drivers' Charges

January 1, 2014 – September 30, 2016	Asian	African American	Hispanic	Caucasian	Total Charges
Warrant	2.42%	72.58%	5.65%	19.35%	124
Driving Under Revoked License	0.00%	66.67%	3.51%	29.82%	57
Driving Under The Influence - Alcohol	1.79%	35.71%	10.71%	51.79%	56
Cannabis Misdemeanor*	0.00%	71.88%	6.25%	21.88%	32
Driving Under Suspended License*	0.00%	71.43%	17.86%	10.71%	28
Driving Under Influence-Drugs	7.41%	66.67%	3.70%	22.22%	27
Controlled Substance Offense	0.00%	66.67%	0.00%	33.33%	18
Drug Equipment-Possession	0.00%	30.77%	15.38%	53.85%	13
Obstructing Justice	0.00%	76.92%	23.08%	0.00%	13
No Driver's License*	0.00%	30.77%	53.85%	15.38%	13
Cannabis Felony	0.00%	83.33%	0.00%	16.67%	12
Resist/Obstruct/Disarm An Officer	0.00%	75.00%	0.00%	25.00%	12
Weapons Offense	0.00%	91.67%	8.33%	0.00%	12
Fleeing Or Attempt To Elude Police	0.00%	83.33%	0.00%	16.67%	6
Obstructing Identification	0.00%	40.00%	20.00%	40.00%	5

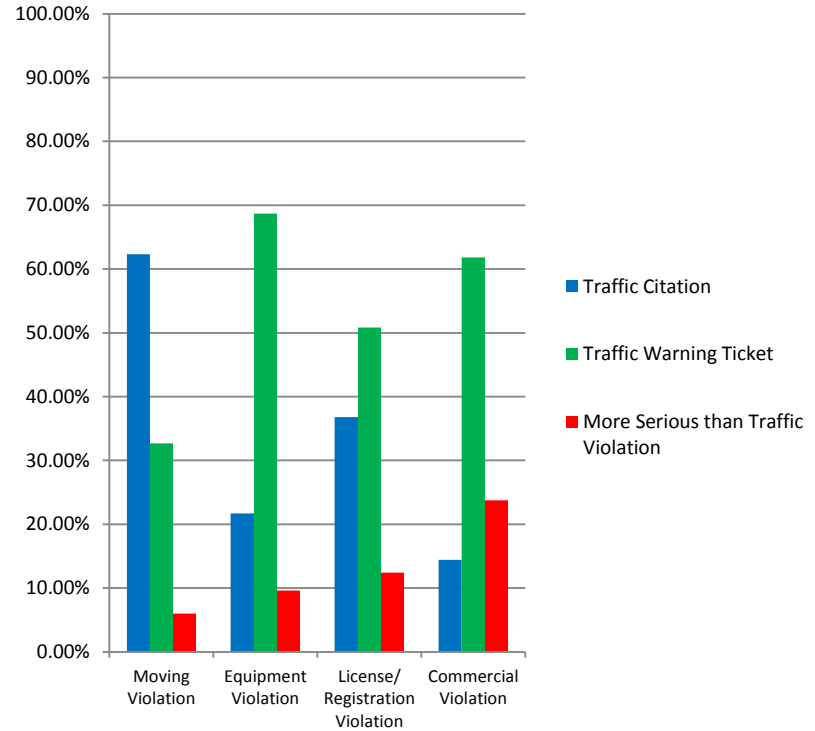
*While these charges no longer lead to automatic arrests, there may be other charges associated with the same incident. These are included because they are more serious than traffic violations.



Motivations for Stop by Outcomes



Reasons for Stop by Outcomes



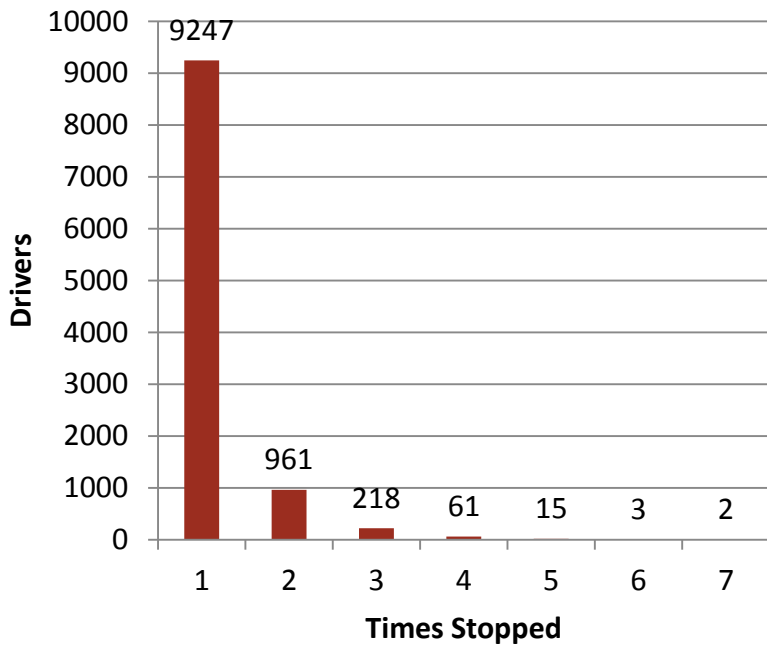
Recommendations for Tracking

- Outcomes should continue to be tracked regularly
- Additional analysis for racial disparity in arrests



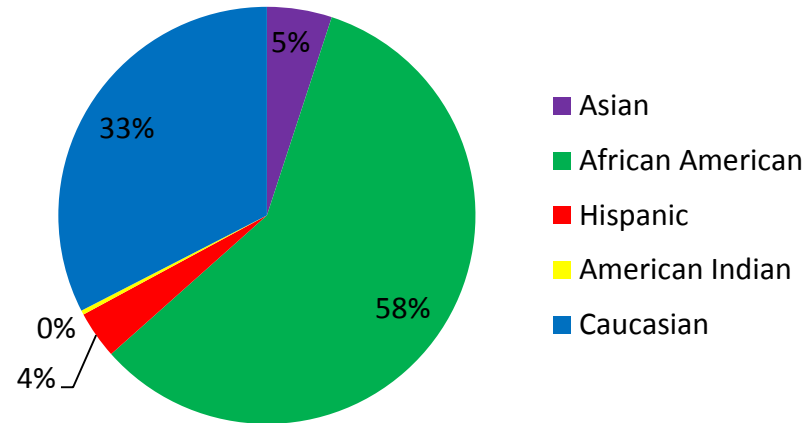
Multiple Stops by Drivers,

January 1, 2013 – December 31, 2015



Multiple Stops by Race of Driver

January 1, 2013 – December 31, 2015



Recommendations for Tracking

- Drivers stopped multiple times in a specified period of time should continue to be tracked regularly
 - Report distributed to command staff



Consent Searches

	Total Stops	Total Consent Searches	CAU	AF AM	HIS	AS
2004	3545	78	51	24	3	0
2005	3055	17	9	8	0	0
2006	4015	12	3	7	2	0
2007	3381	27	9	13	3	2
2008	4025	35	15	15	5	0
2009	4277	16	4	9	2	1
2010	3079	7	4	3	0	0
2011	2830	16	4	11	1	0
2012	3751	11	7	5	0	0
2013	4294	23	10	10	3	0
2014	4205	26	13	13	0	0
2015	3659	10	5	4	1	0

Dog Sniffs

	Total Stops	Dog Sniffs	CAU	AF AM	HIS	AS
2012	3751	29	12	16	1	0
2013	4294	46	19	25	2	0
2014	4205	58	22	34	1	1
2015	3659	38	16	20	2	0

Recommendations for Tracking

- Continue to track yearly IDOT data, and monitor for substantial changes

URBANA POLICE DEPARTMENT REPORT TO CITY COUNCIL CONCERNING TRAFFIC STOP DATA

URBANA POLICE DEPARTMENT | CRIME ANALYSIS

EMAIL QUESTIONS MAY BE DIRECTED TO:

Lt. Bob Fitzgerald, Police Services Commander at fitzgerj@urbanaininois.us

H. Alex Bautista, Human Relations Officer at hro@urbanaininois.us

