




CITY OF URBANA, ILLINOIS
DEPARTMENT OF PUBLIC WORKS

ENGINEERING

MEMORANDUM

TO: Mayor Laurel L. Prussing and Members of the City Council

FROM: William R. Gray, Public Works Director 
Craig E. Shonkwiler, Assistant City Engineer

DATE: September 22, 2016

RE: Windsor Road Pavement Reconstruction Project – Race Street to Philo Road
Pavement Issue Status

Introduction

City staff has monitored the Windsor Road concrete pavement cracks periodically for over a year. As of August 23, 2016, the pavement has not stopped cracking, with about sixty-one percent of the westbound lane slabs and about thirty-three percent of the eastbound lane slabs showing cracks. For reference, please see the attached summary sheet and crack progression map.

Pavement Crack Issue Timeline

The pavement cracking issue became a serious concern in August and September of 2015. Prior to this date, the contractor, Stark Excavating, Inc. (Stark), repaired less than a handful of slabs with cracks at their cost. After this date, more and more pavement cracks appeared, and at the end of September 2015, the City and Stark agreed the crack issue was unprecedented and required detailed analysis by outside pavement experts. In October of 2015, pavement scanning was performed of a few select joints (i.e., the spaces between concrete panels) to determine the alignment of dowel bars in the eastbound lanes. (Dowel bars are used to connect joints so that the panels do not shift upward or downward thereby creating a bumpy road surface.) The results of that initial analysis showed a need for further analysis. The City and Stark jointly agreed to share the cost of scanning the dowel bar alignment for all joints in the eastbound lanes which were never opened to traffic. In November of 2015, the City made a request to Stark to fix the cracked pavement. Over the remainder of the fall of 2015, the winter of 2015-16, and into the spring of 2016, City staff met with its pavement consultants, Illinois Department of Transportation representatives, Stark and their pavement consultants, and attorneys representing the City and Stark in an effort to resolve the cause of the pavement cracks and determine responsibility for fixing the pavement. For reference, please see attached timeline of activities related to the Windsor Road pavement issue. The designer/engineer of the road (Hanson Professional Services, Inc.) has been included in the meetings and discussions.

Additional Pavement Testing & Results

Additional pavement testing and sampling was performed on August 17 and 18 of 2016 in the open westbound lanes and closed eastbound lanes to obtain a complete set of pavement data and limit future road closures for testing and sampling. The results from that pavement testing and sampling are not available as of the date of this memo.

Possible Crack Causations

To date no definitive source of the cracking problem has been identified and the City and Stark have not agreed on any particular cause. Considerations have been given by pavement consultants to possible crack causations such as base material, slab/base friction, slab spacing, transverse dowel bar size, spacing and friction, longitudinal curb tie steel size and spacing, longitudinal joint tie steel size and spacing, built in curling/warping of the slabs, concrete materials, paving operations, etc.

Road Opening Request

A written request was made to Stark on September 12, 2016 to open the road fully to traffic. The request included pavement removal and replacement of fractured or faulted slabs and replacement of slabs removed for testing. The request also included preparing the traffic signals at the Windsor Road/Race Street and Windsor/Philo Road intersections for full traffic actuation as well as installation of final pavement striping. (See attached road opening checklist and plans.) As of the date of this memo the City has not received a reply from Stark to the City's request to open the road.

It should be noted that opening the road does not mean the City has final-accepted the road.

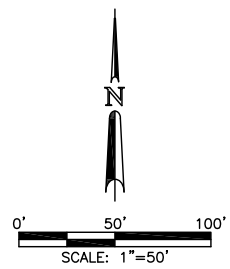
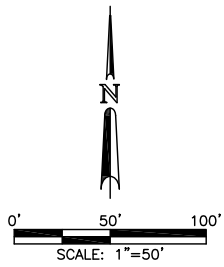
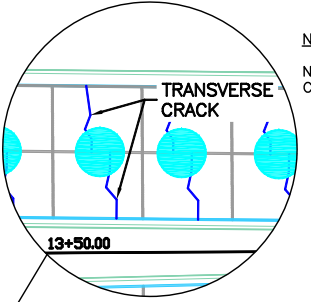
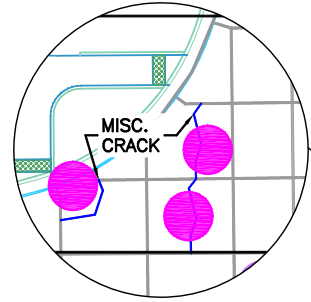
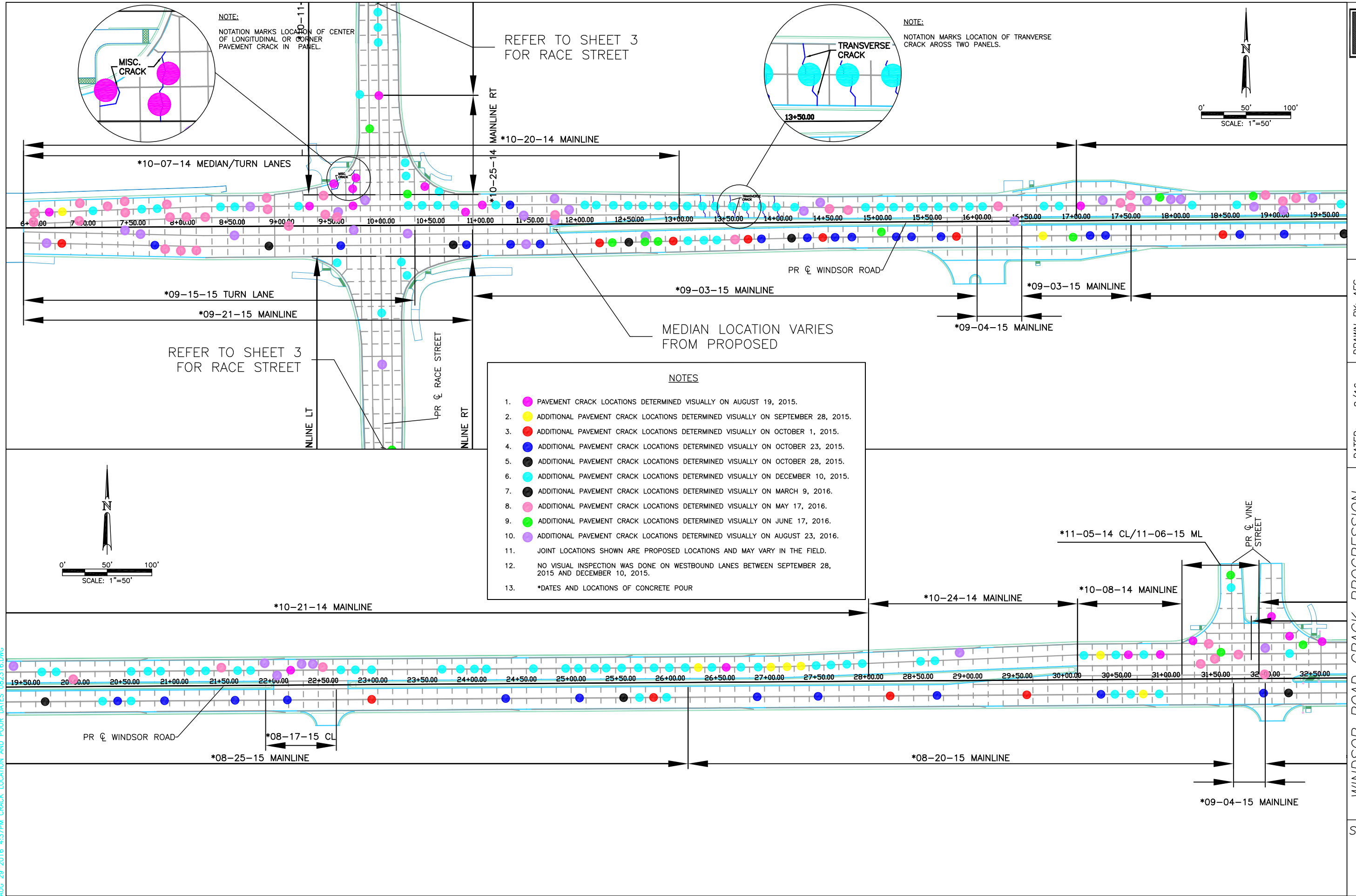
Path Forward

City staff is hopeful Stark will cooperate to fully open Windsor Road to traffic before winter sets in. Pending the results of the pavement testing, City staff anticipates continuing to work with Stark to resolve this unprecedented pavement issue so the City can receive a road that can serve the public adequately for an acceptable period of time and future resources can be dedicated to other roads in the City as was originally intended. However, it must be noted that, absent a mutual resolution of the dispute, litigation will occur.

Windsor Road Cracked Slab Quantity - 8-23-16

	Cracked Slabs	Total Slabs	Percentage of Slabs
<u>Windsor Road Mainline</u>			
EB Lanes - Inside	136	404	33.7%
EB Lanes - Outside	130	404	32.2%
WB Lanes - Inside	231	404	57.2%
WB Lanes - Outside	265	404	65.6%
<u>Crossroads Mainline</u>			
Race St. North	21	124	16.9%
Race St. South	17	128	13.3%
Vine SB	3	14	21.4%
Vine NB	2	12	16.7%
Lynn	5	6	83.3%
Philo Rd. North	9	56	16.1%
Philo Rd. South	1	126	0.8%
<u>Crossroad - Miscellaneous</u>			
<u>(Fillets, odd shaped panels)</u>			
Race N	9	15	60.0%
Race S	5	14	35.7%
Vine SB	2	5	40.0%
Vine NB	2	5	40.0%
Lynn	1	2	50.0%
Philo N	12	26	46.2%
Philo S	3	18	16.7%
<u>Turn Lane/Crossover</u>			
<u>(Median openings, turn lanes)</u>			
Center	111	340	32.6%
Right Turn lane at Philo	3	7	42.9%

AUG 29 2016 4:37PM CRACK LOCATION AND POUR DATES 082316.DWG



CITY OF URBANA
PUBLIC WORKS
ENGINEERING DIVISION

DRAWN BY: AES
DESIGNED BY: 8/16
CHECKED BY:
CITY SECTION
13-00540-00-PV

WINDSOR ROAD CRACK PROGRESSION
PLAN AND PROFILE
CRACK LOCATION AND POUR DATES - 1

SHEET NO.
1
OF
3

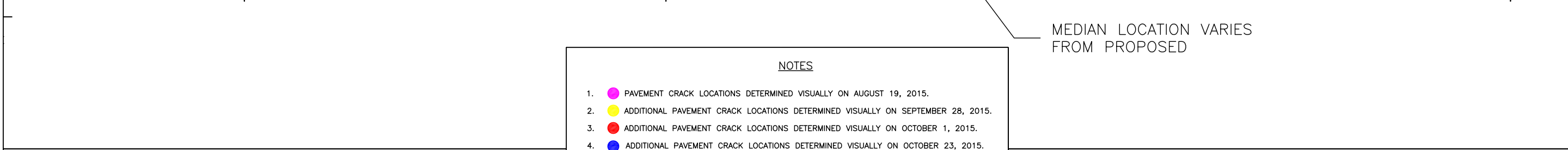
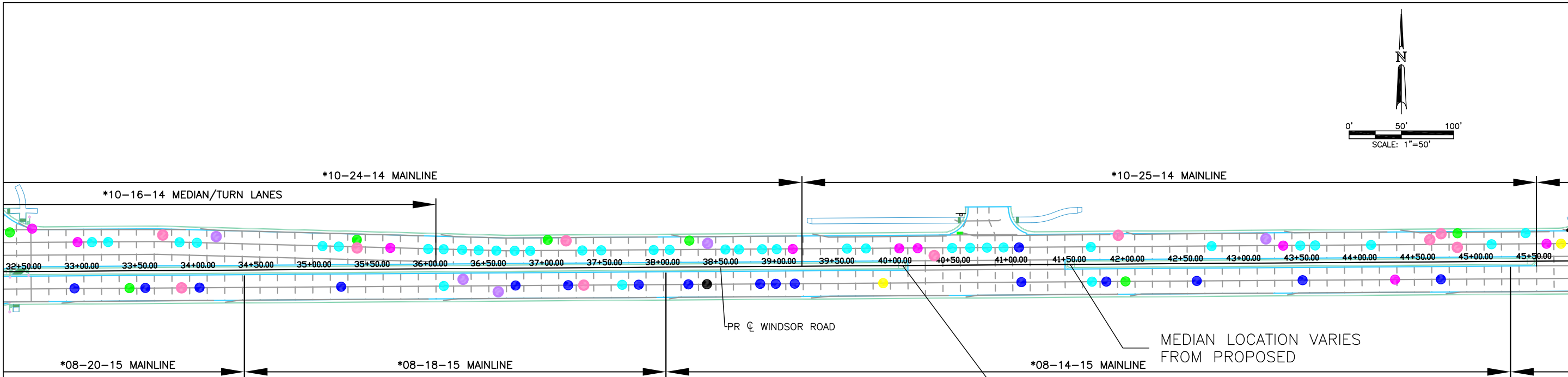
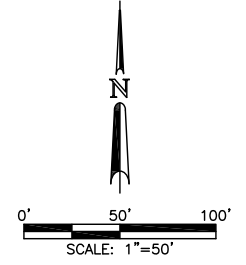


CITY OF URBANA
PUBLIC WORKS
ENGINEERING DIVISION

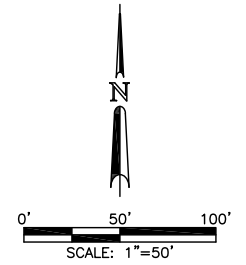
DRAWN BY: AES
CHECKED BY:
DESIGNED BY:
CITY SECTION
13-00540-00-PV

WINDSOR ROAD CRACK PROGRESSION
PLAN AND PROFILE
CRACK LOCATION AND POUR DATES -2

SHEET NO.
2
OF
3

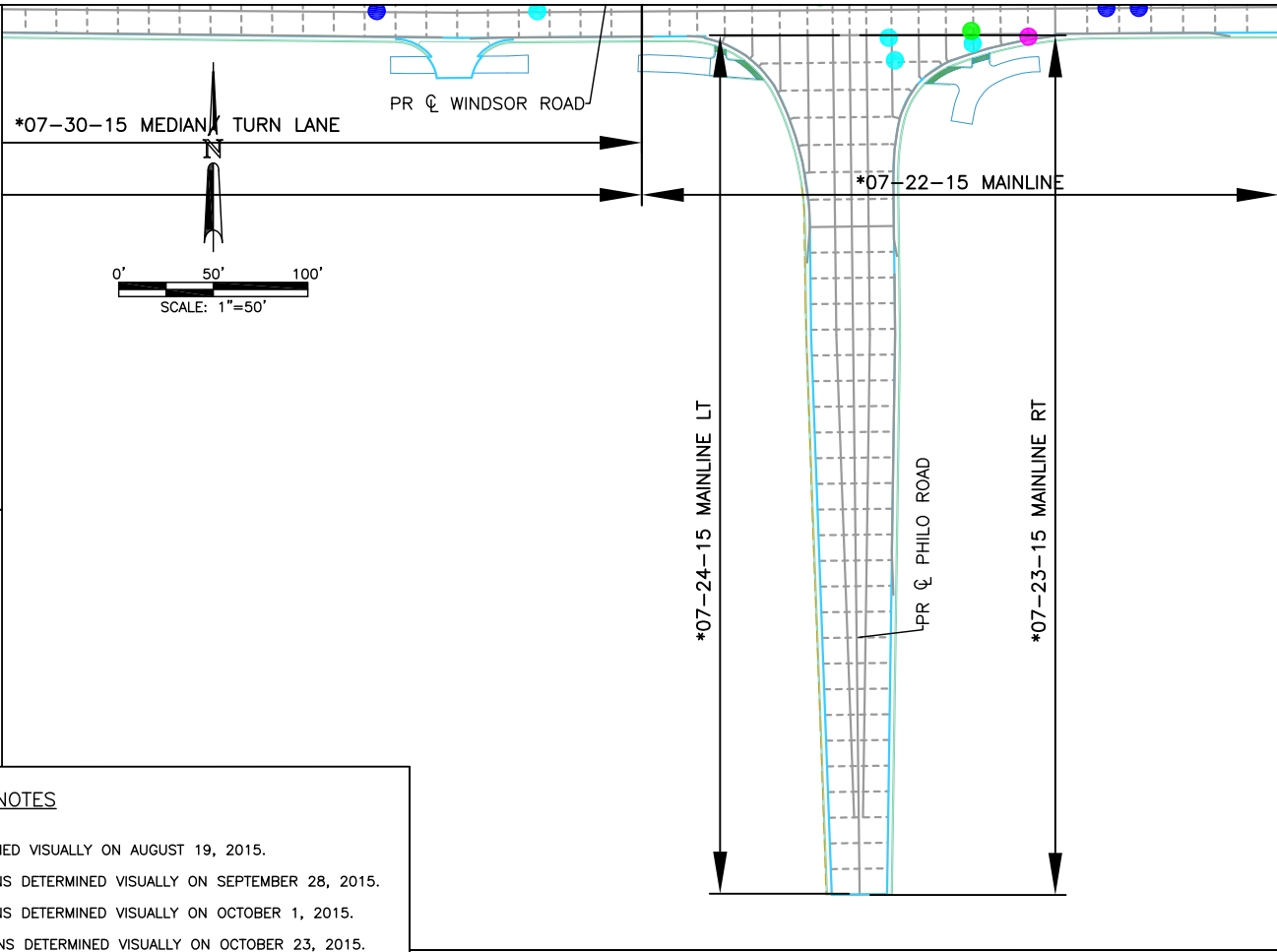
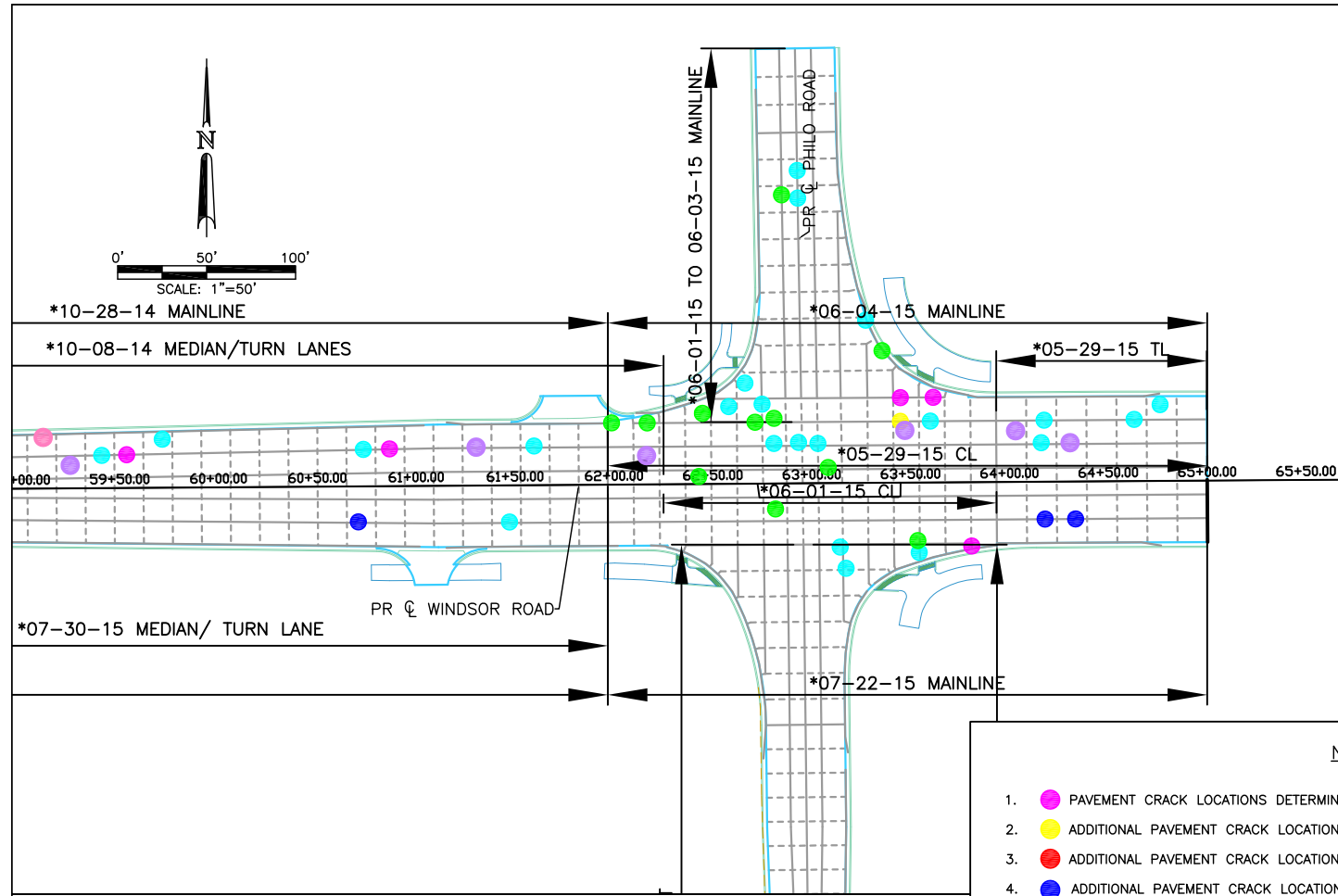


- NOTES
1. ● PAVEMENT CRACK LOCATIONS DETERMINED VISUALLY ON AUGUST 19, 2015.
 2. ● ADDITIONAL PAVEMENT CRACK LOCATIONS DETERMINED VISUALLY ON SEPTEMBER 28, 2015.
 3. ● ADDITIONAL PAVEMENT CRACK LOCATIONS DETERMINED VISUALLY ON OCTOBER 1, 2015.
 4. ● ADDITIONAL PAVEMENT CRACK LOCATIONS DETERMINED VISUALLY ON OCTOBER 23, 2015.
 5. ● ADDITIONAL PAVEMENT CRACK LOCATIONS DETERMINED VISUALLY ON OCTOBER 28, 2015.
 6. ● ADDITIONAL PAVEMENT CRACK LOCATIONS DETERMINED VISUALLY ON DECEMBER 10, 2015.
 7. ● ADDITIONAL PAVEMENT CRACK LOCATIONS DETERMINED VISUALLY ON MARCH 9, 2016.
 8. ● ADDITIONAL PAVEMENT CRACK LOCATIONS DETERMINED VISUALLY ON MAY 17, 2016.
 9. ● ADDITIONAL PAVEMENT CRACK LOCATIONS DETERMINED VISUALLY ON JUNE 17, 2016.
 10. ● ADDITIONAL PAVEMENT CRACK LOCATIONS DETERMINED VISUALLY ON AUGUST 23, 2016.
 11. JOINT LOCATIONS SHOWN ARE PROPOSED LOCATIONS AND MAY VARY IN THE FIELD.
 12. NO VISUAL INSPECTION WAS DONE ON WESTBOUND LANES BETWEEN SEPTEMBER 28, 2015 AND DECEMBER 10, 2015.
 13. *DATES AND LOCATIONS OF CONCRETE POUR

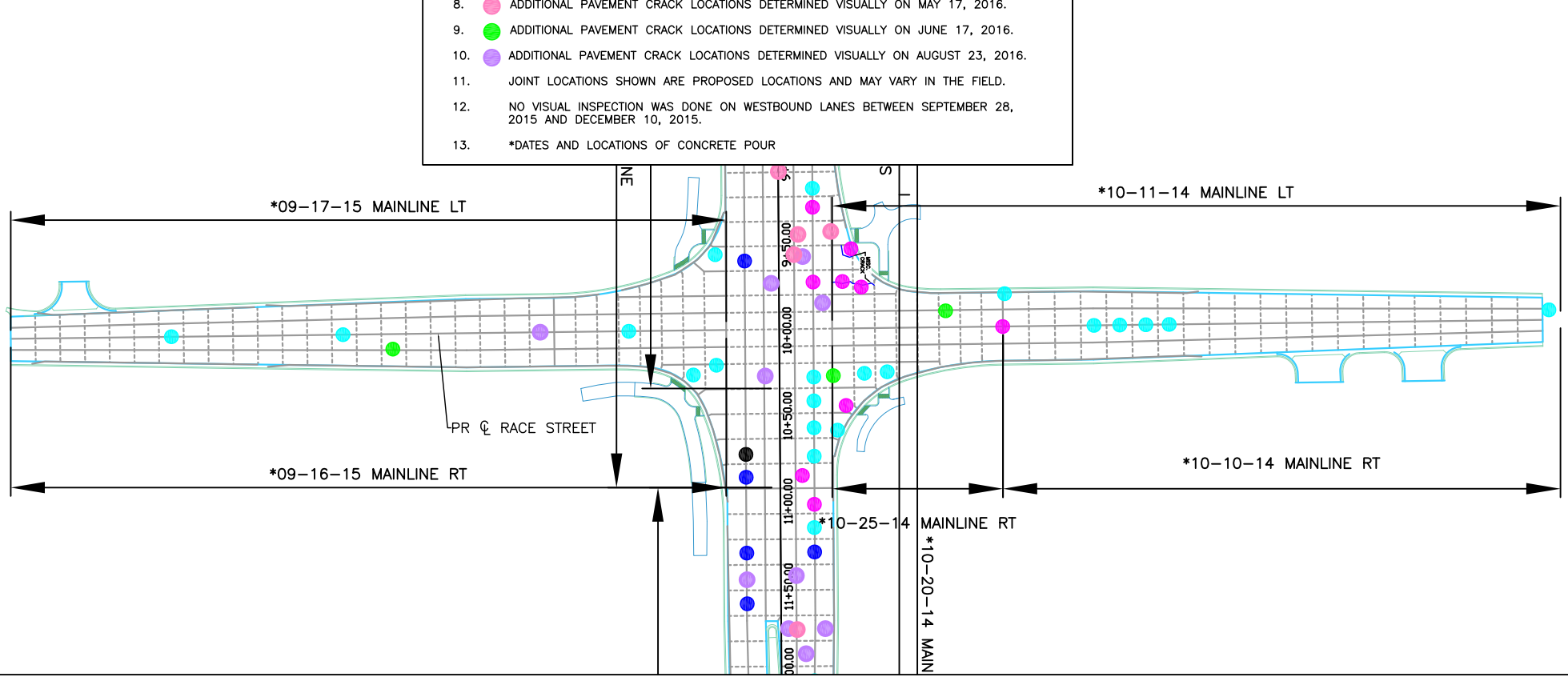


AUG 29 2016 4:38PM CRACK LOCATION AND POUR DATES -2.DWG

AUG 29 2016 4:38PM CRACK LOCATION AND POUR DATES -- 082316.DWG



- NOTES
1. ● PAVEMENT CRACK LOCATIONS DETERMINED VISUALLY ON AUGUST 19, 2015.
 2. ● ADDITIONAL PAVEMENT CRACK LOCATIONS DETERMINED VISUALLY ON SEPTEMBER 28, 2015.
 3. ● ADDITIONAL PAVEMENT CRACK LOCATIONS DETERMINED VISUALLY ON OCTOBER 1, 2015.
 4. ● ADDITIONAL PAVEMENT CRACK LOCATIONS DETERMINED VISUALLY ON OCTOBER 23, 2015.
 5. ● ADDITIONAL PAVEMENT CRACK LOCATIONS DETERMINED VISUALLY ON OCTOBER 28, 2015.
 6. ● ADDITIONAL PAVEMENT CRACK LOCATIONS DETERMINED VISUALLY ON DECEMBER 10, 2015.
 7. ● ADDITIONAL PAVEMENT CRACK LOCATIONS DETERMINED VISUALLY ON MARCH 9, 2016.
 8. ● ADDITIONAL PAVEMENT CRACK LOCATIONS DETERMINED VISUALLY ON MAY 17, 2016.
 9. ● ADDITIONAL PAVEMENT CRACK LOCATIONS DETERMINED VISUALLY ON JUNE 17, 2016.
 10. ● ADDITIONAL PAVEMENT CRACK LOCATIONS DETERMINED VISUALLY ON AUGUST 23, 2016.
 11. JOINT LOCATIONS SHOWN ARE PROPOSED LOCATIONS AND MAY VARY IN THE FIELD.
 12. NO VISUAL INSPECTION WAS DONE ON WESTBOUND LANES BETWEEN SEPTEMBER 28, 2015 AND DECEMBER 10, 2015.
 13. *DATES AND LOCATIONS OF CONCRETE POUR



CITY OF URBANA
PUBLIC WORKS
ENGINEERING DIVISION

DATED:	8/16	DRAWN BY:	AES
DESIGNED BY:		CHECKED BY:	
CITY SECTION		13-00540-00-PV	

WINDSOR ROAD CRACK PROGRESSION
PLAN AND PROFILE
CRACK LOCATION AND POUR DATES --3

SHEET NO.
3
OF
3

Pavement Issue Timeline

Windsor Road Pavement Reconstruction Project
Windsor Road - Race Street to Philo Road
Urbana, IL
Section No.: 13-00540-00-PV
Contract No.: 91515

Date: 9/22/16

Date	Item
2014	
7/18/2014	Bids opened.
8/18/2014	Road construction started.
10/7/2014	Start of westbound lane construction, west of Race Street.
11/6/2014	End of westbound lane construction, west of Philo Road.
12/13/2014	End of 2014 construction, start of winter shut-down period.
2015	
4/17/2015	End winter shut-down period, start of 2015 construction.
5/29/2015	Start of westbound lane construction, east of Philo Road.
6/4/2015	End of westbound lane construction, west of Philo Road.
7/22/2015	Start of eastbound lane construction, east of Philo Road.
August 2015'	Pavement cracks started appearing.
8/19/2015	Pavement crack locations determined by Urbana visually this date. First crack progression map created.
September 2015'	More than 25 pavement cracks appeared overnight after low temperatures in 40's.
9/21/2015	End of eastbound lane construction, west of Race Street.
9/23/2015	Urbana & Stark meet.
9/28/2015	Additional pavement crack locations determined by Urbana & crack progression map updated.
10/1/2015	Additional pavement crack locations determined by Urbana & crack progression map updated.
10/6/2015	Select eastbound lane joints between panels are scanned.
10/19/2015	Urbana and Urbana's pavement consultant meet with Stark.
10/21/2015	All eastbound lane joints are scanned.
10/23/2015	Additional pavement crack locations determined by Urbana & crack progression map updated.
10/26/2015	Urbana and Urbana's pavement consultant meet with Stark.
10/28/2015	Additional pavement crack locations determined by Urbana & crack progression map updated.
11/9/2015	Urbana meets with IDOT central office materials engineer & FHWA engineer on site to look at cracks.
11/12/2015	Urbana sends memo to Stark asking for cracked pavement to be fixed.
11/17/2015	Urbana & Stark meet.
11/17/2015	Stark gives response memo to Urbana 11/12/15 memo.
11/20/2015	Urbana reaches out to other pavement professionals about cracking issue.

Pavement Issue Timeline

Windsor Road Pavement Reconstruction Project
Windsor Road - Race Street to Philo Road
Urbana, IL
Section No.: 13-00540-00-PV
Contract No.: 91515

Date: 9/22/16

Date	Item
12/10/2015	Additional pavement crack locations determined by Urbana & crack progression map updated.
12/22/2015	Urbana visits project site with other pavement professionals.
2016	
1/27/2016	Urbana makes request to IDOT for assistance in determining cause of uncontrolled cracks.
1/29/2016	Stark & materials testing company perform material sampling of westbound lanes.
February 2016'	Stark retains outside pavement consultant.
2/29/2016	Stark or their consultants perform pavement sampling and testing in eastbound lanes.
3/1/2016	Stark & their consultants perform pavement sampling and testing in westbound lanes.
3/8/2016	Urbana receives response from IDOT concerning request for assistance.
3/9/2016	Additional pavement crack locations determined by Urbana & crack progression map updated.
3/29/2016	Urbana, Urbana's engineering consultant, Urbana's pavement consultant meet with Stark & Stark's pavement consultants.
3/29/2016	Stark pavement consultants release copies of their pavement analysis.
4/6/2016	Urbana releases Urbana's engineering consultant's pavement design information to Stark.
4/11/2016	Urbana, Urbana's pavement consultant & IDOT meet.
4/15/2016	Urbana & IDOT meet with Stark.
4/18/2016	Urbana sends letter to Stark formally requesting repair of pavement.
4/26/2016	Urbana meets with legal counsel.
4/28/2016	Urbana, Urbana attorney, Urbana's engineering consultant, Urbana's pavement consultant & IDOT meet with Stark, Stark's bonding company, Stark's pavement consultants & Stark's attorney.
5/2/2016	Urbana sends letter to Stark formally suspending the charging of working days.
5/17/2016	Additional pavement crack locations determined by Urbana & crack progression map updated.
5/18/2016	Urbana meets with legal counsel.
5/19/2016	Urbana, Urbana's legal counsel, Urbana's engineering consultant & Urbana's pavement consultant meet.

Pavement Issue Timeline

Windsor Road Pavement Reconstruction Project
Windsor Road - Race Street to Philo Road
Urbana, IL
Section No.: 13-00540-00-PV
Contract No.: 91515

Date: 9/22/16

Date	Item
6/17/2016	Urbana meets with Urbana pavement consultant in office and field to discuss causation of pavement cracks.
6/17/2016	Additional pavement crack locations determined by Urbana & crack progression map updated.
7/12/2016	Urbana & their engineering consultant meet.
7/20/2016	Urbana, Urbana's engineering consultant, Urbana's pavement consultant & IDOT meet.
7/29/2016	Urbana, Urbana's legal counsel, Urbana's engineering consultant & their attorney, & Urbana pavement consultant.
8/11/2016	Urbana, Urbana's legal counsel, Urbana's engineering consultant & their attorney, & Urbana pavement consultant.
8/17/2016	Urbana's pavement consultant performs overnight pavement testing and sampling. Scanning of westbound lane joints is included. Stark's pavement consultants are present during testing.
8/18/2016	Urbana's pavement consultant performs overnight pavement testing and sampling. Scanning of westbound lane joints is included. Stark's pavement consultants are present during testing.
8/23/2016	Additional pavement crack locations determined by Urbana & crack progression map updated.
8/24/2016	Urbana retains outside legal counsel.
9/2/2016	Urbana meets with outside legal counsel.
9/8/2016	Urbana meets with outside legal counsel.
9/12/2016	Urbana requests Stark open Windsor Road fully to traffic.

Road Opening Check List

Windsor Road Pavement Reconstruction Project
 Windsor Road - Race Street to Philo Road
 Urbana, IL
 Section No.: 13-00540-00-PV
 Contract No.: 91515

Date: 9/12/16

No.	Item	Location	Quantity		
			Length (Feet)	Width (Feet)	Area (Square Yard)
1.	Pavement Removal & Replacement				
	a. Remove & replace panel (fractured)	EB Windsor - W of Race	15.8	11.2	19.7
	b. Remove & replace panels (faulted)	WB Windsor - W of Race	14.4	3.6	5.8
			14.4	11.0	17.6
			14.4	11.0	17.6
			14.3	9.0	14.3
	c. Remove & replace panels (fractured)	WB Windsor - W of Race	14.6	11.0	17.8
			14.5	11.0	17.7
			14.5	8.9	14.3
			14.2	11.0	17.4
			14.5	11.0	17.7
	d. Remove panel (Urbana testing location) Replace panel (Urbana testing location)	EB Windsor - E of Race	11.0	11.0	13.4
			13.5	11.0	16.5
	e. Remove & replace panel (previously sawcut) Replace panel (Stark testing location-agg backfill)	EB Windsor - near CLV Entrance	15.1	11.0	18.5
			15.1	11.0	18.5
	f. Remove & replace panels (fractured)	WB Windsor - near CLV Entrance	15.2	10.9	18.4
			15.2	11.0	18.6
			14.9	10.9	18.0
			14.9	11.0	18.2
	g. Remove panel (Urbana testing location) Replace panel (Urbana testing location)	EB Windsor - near Vine	9.5	11.0	11.6
			12.0	11.0	14.7
	h. Remove & replace panel (previously sawcut)	EB Windsor - near Sta. 40+00	7.3	11.0	8.9
	i. Remove & replace panel (previously sawcut) Replace panel (Stark testing location-agg backfill)	EB Windsor - W of Lynn	7.3	11.0	8.9
			10.7	11.1	13.2
	j. Remove & replace panel (previously sawcut)	EB Windsor - W of Lynn	10.7	10.9	13.0
			15.1	10.9	18.3
	k. Remove & replace panel (previously sawcut) Replace panel (Stark testing location-agg backfill)	EB Windsor - E of Lynn	11.0	9.7	11.9
			10.9	9.7	11.7
	l. Remove panel (Urbana testing location) Replace panel (Urbana testing location)	EB Windsor - W of Philo	10.6	11.0	13.0
			13.0	11.0	15.9
	m. Remove & replace panel (fractured)	WB Windsor at Philo	12.4	10.9	15.0
	n. Remove & replace panel (fractured)	NB Race - N of Windsor	6.0	10.0	6.7
			TOTAL REMOVAL =		405.2
			TOTAL REPLACEMENT =		420.8
2.	Curb & Gutter Removal & Replacement				
	a. Remove & replace B-6.24 (adjacent to fractured panel)	EB Windsor - W of Race	15.8		
	b. Remove & replace B-6.24 (adjacent to faulted panels)	WB Windsor - W of Race	13.5		
	c. Remove & replace B-6.24 (adjacent to fractured panels)	WB Windsor - W of Race	14.0		
	d. Remove & replace B-6.12 (adjacent to fractured panels) Remove & replace B-6.24 (adjacent to fractured panels)	EB Windsor - near CLV Entrance	15.1		
			15.1		
	e. Remove & replace B-6.24 (adjacent to fractured panels) Remove & replace B-6.12 (adjacent to fractured panels)	WB Windsor - near CLV Entrance	15.2		
			15.2		
	f. Remove & replace B-6.24 (previously sawcut)	EB Windsor - near Sta. 40+00	7.3		
	g. Remove & replace B-6.24 (previously sawcut)	EB Windsor - W of Lynn	10.7		
	h. Remove & replace B-6.24 (fractured)	SB Race - N of Windsor	4.0		
		TOTAL REMOVE & REPLACE B-6.12=	30.3		
		TOTAL REMOVE & REPLACE B-6.24=	95.6		

3.	Expansion Joints			
	a. Seal unsealed expansion joints	Entire project		
4.	Core drilled holes			
	a. Fill core drilled holes	EB Windsor - W of Lynn		
5.	Traffic Signal Items			
	a. Remove bags on all traffic signal heads	Windsor Road & Race Street, Windsor Road & Philo Road		
	b. Adjust cameras and install proper detection zones			
	c. Install new traffic signal timings			
	d. Repair damaged handhole	NW Windsor Road & Philo Road		
	e. Install streetlight photocell	SW Windsor Road & Race Street		
6.	Survey Vault & Monument			
	a. Install survey vault and monument	Windsor Road median - E of Vine		
7.	Erosion Control			
	a. Removal erosion control items	Entire project		
8.	Pavement Striping			
	a. Remove temporary pavement striping	Entire project		
	b. Install final pavement striping per plans	Entire project		
9.	Traffic Signage			
	a. Reinstall removed W1-7 "Two Direction Large Arrow" Sign	Windsor Road at Vine Street		
10.	Crack measuring equipment			
	a. Remove crack measuring equipment	Select locations on project		
11.	Work Zone Traffic Control			
	a. Remove work zone traffic control	Entire project		
12.	Sweep road	Windsor Road EB lanes		

Location 1a & 2a
 REMOVE & REPLACE PANEL(1)=19.7 SY
 REMOVE & REPLACE B-6.24
 C&G=15.8FT

Location 1b & 2b
 REMOVE & REPLACE PANELS(4)
 =55.3 SY
 REMOVE & REPLACE B-6.24
 C&G=13.5'

Location 1c & 2c
 REMOVE & REPLACE PANELS(6)
 =99.4 SY
 REMOVE & REPLACE B-6.24
 C&G=14.0'

Location 1f & 2e
 REMOVE & REPLACE PANELS(5)
 =91.4 SY
 REMOVE & REPLACE B-6.24
 C&G=15.2'
 REMOVE & REPLACE B-6.12
 C&G=15.2'

Location 1e & 2d
 REMOVE & REPLACE PANEL(2)
 (NORTH HALF SAWCUT FOR REMOVAL)
 =18.5 SY
 (SOUTH HALF REMOVED AND FILLED
 WITH AGGREGATE)=18.5 SY
 REMOVE & REPLACE B-6.12 C&G=15.1'
 REMOVE & REPLACE B-6.24 C&G=15.1'

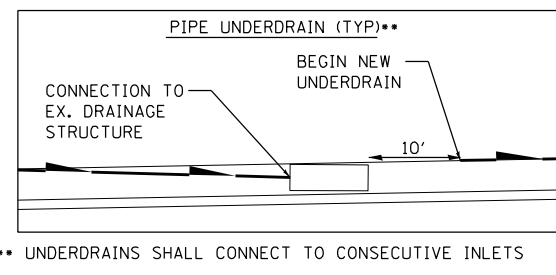
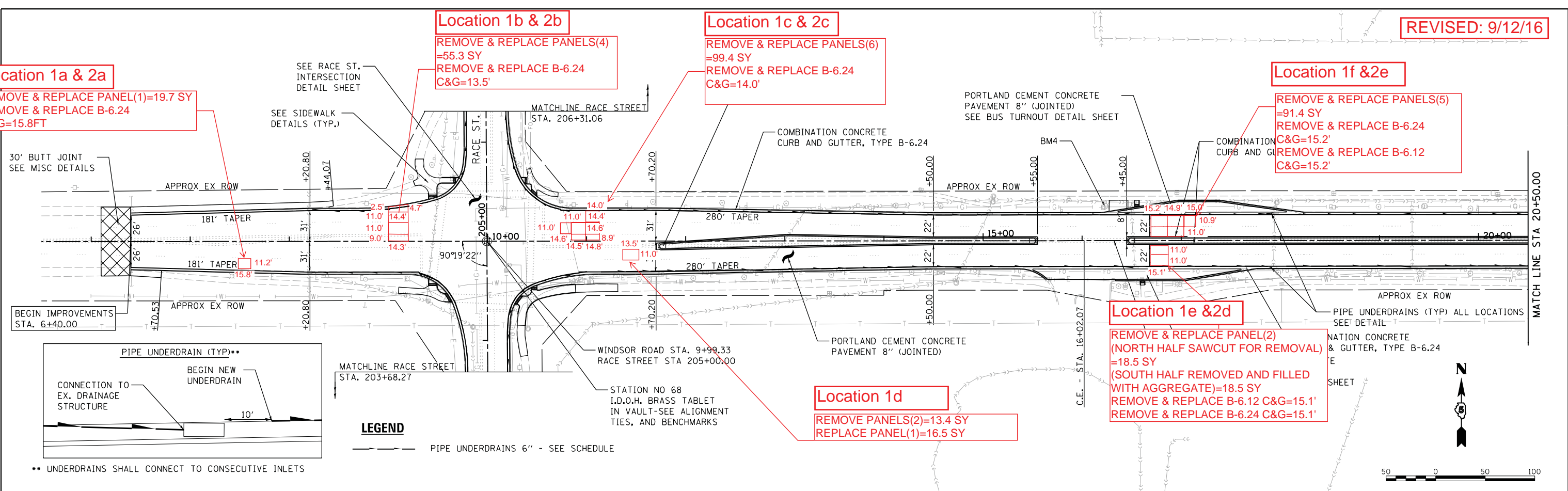
Location 1d
 REMOVE PANELS(2)=13.4 SY
 REPLACE PANEL(1)=16.5 SY

DATE	
BY	
DESIGNED	
DRAWN	
REVIEWED	



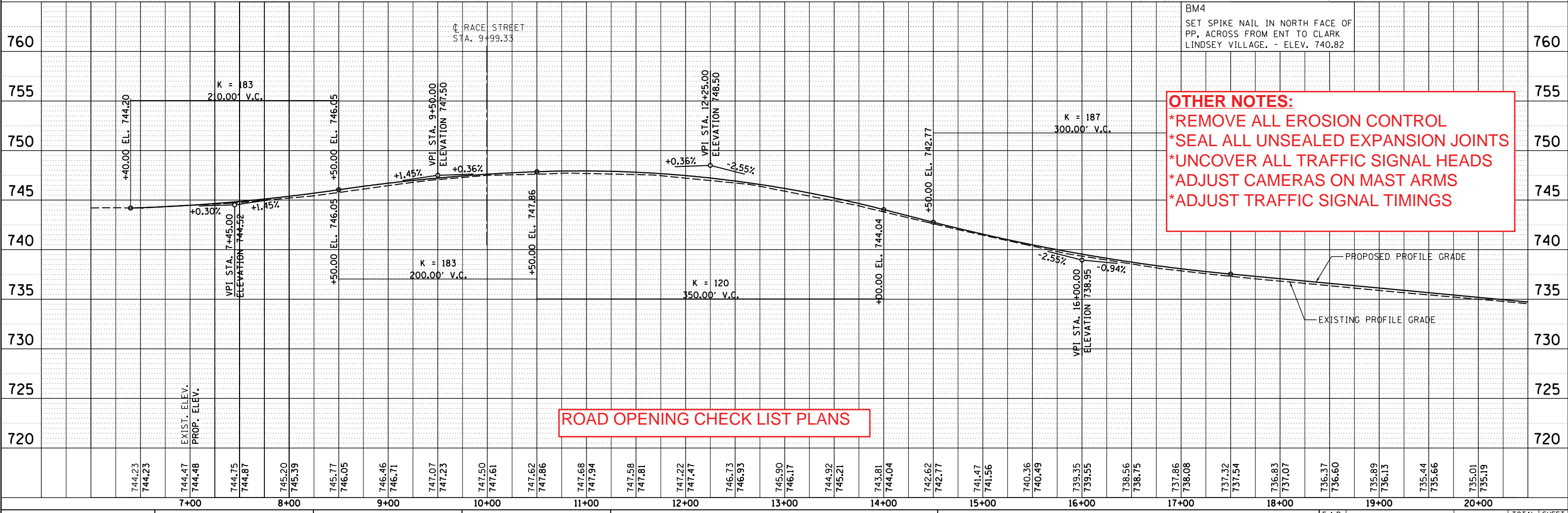
DATE	
BY	
DESIGNED	
DRAWN	
REVIEWED	

DATE	4/29/14
BY	RSJ
DESIGNED	MH
DRAWN	RSJ
REVIEWED	MH



LEGEND
 --- PIPE UNDERDRAINS 6" - SEE SCHEDULE

•• UNDERDRAINS SHALL CONNECT TO CONSECUTIVE INLETS



OTHER NOTES:
 *REMOVE ALL EROSION CONTROL
 *SEAL ALL UNSEALED EXPANSION JOINTS
 *UNCOVER ALL TRAFFIC SIGNAL HEADS
 *ADJUST CAMERAS ON MAST ARMS
 *ADJUST TRAFFIC SIGNAL TIMINGS

ROAD OPENING CHECK LIST PLANS

FILE NAME =	USER NAME = johns00944	DESIGNED - MH	REVISED -	STATE OF ILLINOIS DEPARTMENT OF TRANSPORTATION	PLAN & PROFILE - (WINDSOR RD.) WINDSOR ROAD		F.A.P. R.T.E.	SECTION	COUNTY	TOTAL SHEETS	SHEET NO.
D513L0201-sht-plnprf01		DRAWN - RSJ	REVISED -		7145	13-00540-00-PV	CHAMPAIGN	80	28		
MODEL NAME = Plan and Profile		CHECKED - MH	REVISED -		13L0201		CONTRACT NO.	91515			
PLOT DATE = 06/12/2014		DATE = 05-03-2014	REVISED -		SCALE: 1" = 50'	SHEET 1 OF 4 SHEETS	STA.	TO STA.	ILLINOIS FED. AID PROJECT		

REVISED: 9/12/16

Location 1g
 REMOVE PANELS(2)=11.6 SY
 REPLACE PANEL(1)=14.7 SY

Location 9a
 RE-INSTALL TWO DIRECTION
 LARGE ARROW SIGN

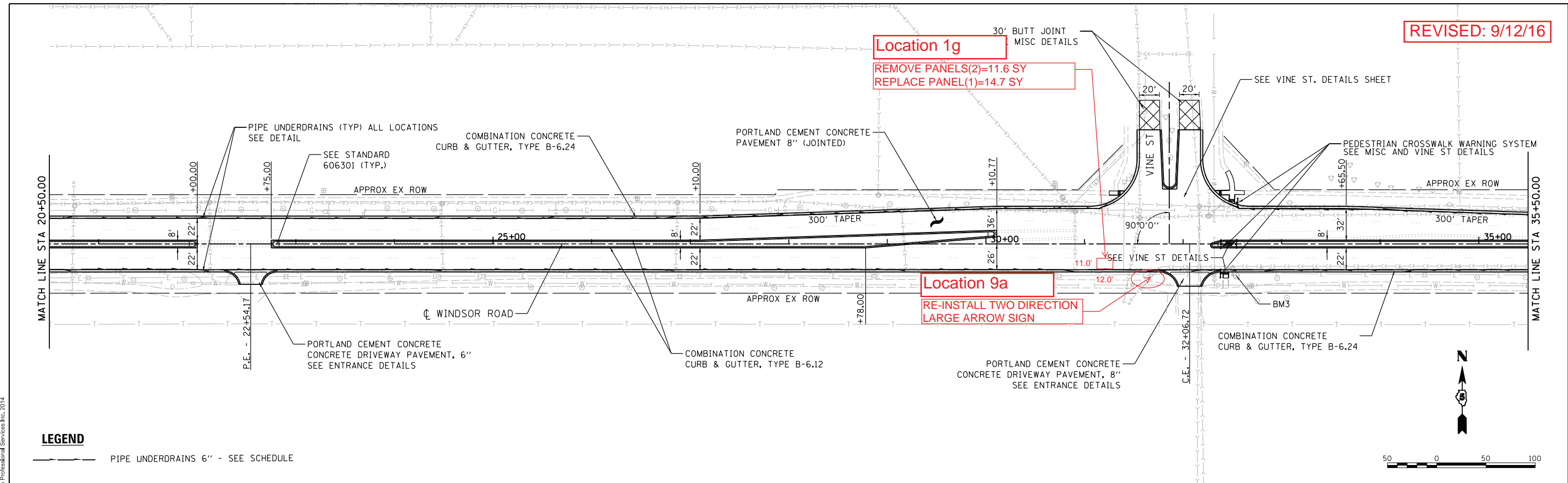
OTHER NOTES:
 *REMOVE ALL EROSION CONTROL
 *SEAL ALL UNSEALED EXPANSION JOINTS

PLAN	SURVEYED	DATE
NOTE BOOK	PLOTTED	
NO.	ALIGNED	
	CHECKED	
	BY	
	DATE	

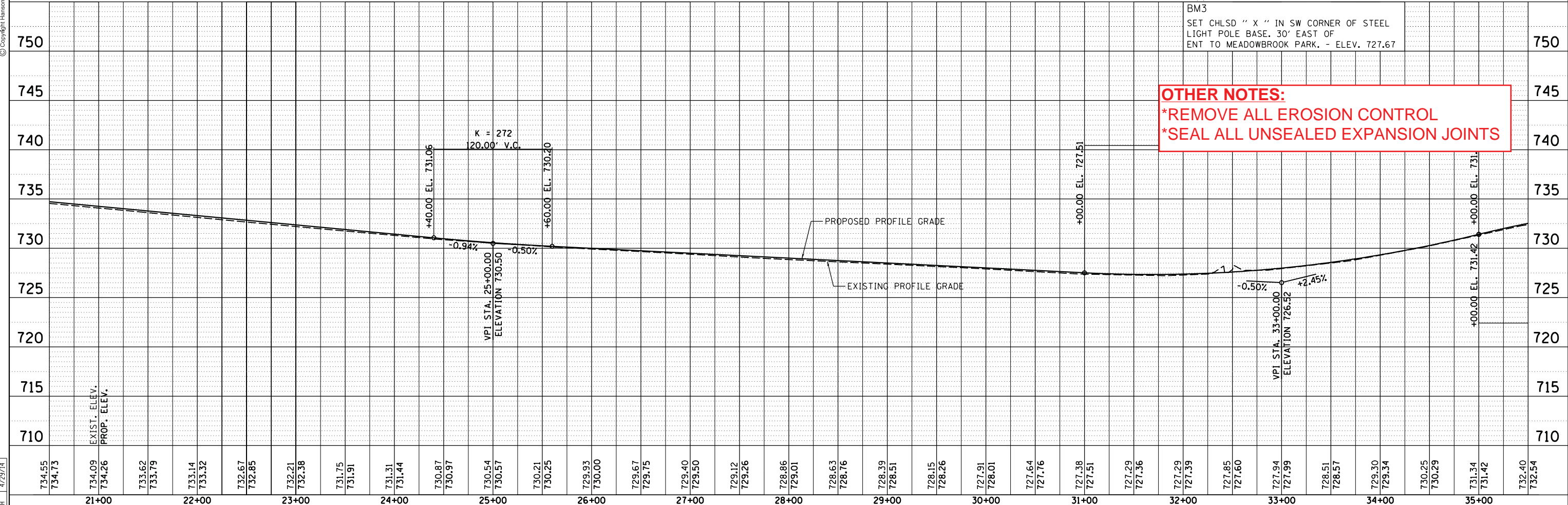
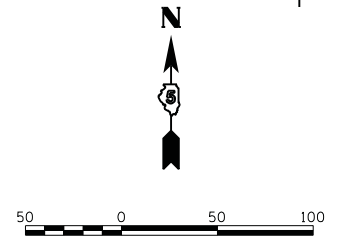


PROFILE	SURVEYED	DATE
NOTE BOOK	PLOTTED	
NO.	GRADES CHECKED	
	STRUCTURE	
	NOT AT THIS OFFICE	

DESIGNED	MH	4/29/14
DRAWN	RSJ	4/29/14
REVIEWED	MH	4/29/14



LEGEND
 --- PIPE UNDERDRAINS 6" - SEE SCHEDULE



FILE NAME =	USER NAME = johns00944	DESIGNED - MH	REVISER -
D513L0201-shr-plnprf02		DRAWN - RSJ	REVISER -
MODEL NAME =	PLOT SCALE = 100.0000' / 1"	CHECKED - MH	REVISER -
Plan and Profile	PLOT DATE = 06/12/2014	DATE = 05-03-2014	REVISER -

**STATE OF ILLINOIS
 DEPARTMENT OF TRANSPORTATION**

**PLAN & PROFILE - (WINDSOR RD.)
 WINDSOR ROAD**

F.A.P. RTE.	SECTION	COUNTY	TOTAL SHEETS	SHEET NO.
7145	13-00540-00-PV	CHAMPAIGN	80	29
13L0201			CONTRACT NO.	91515

SCALE: 1" = 50' SHEET 2 OF 4 SHEETS STA. TO STA.

ILLINOIS FED. AID PROJECT

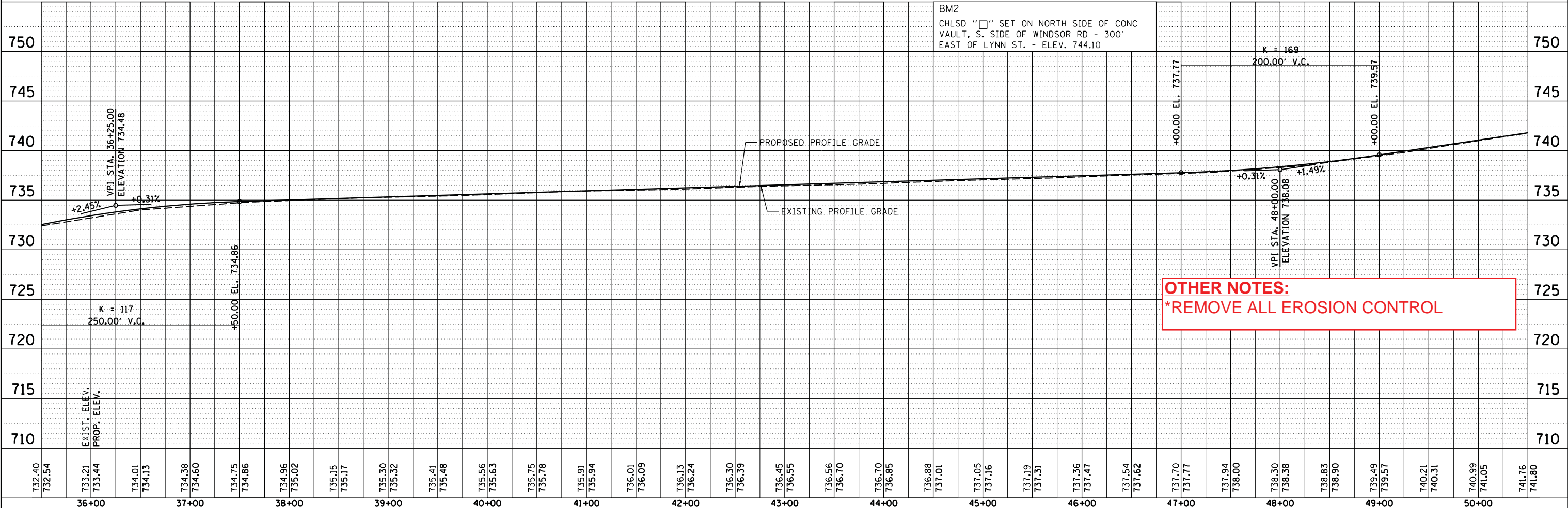
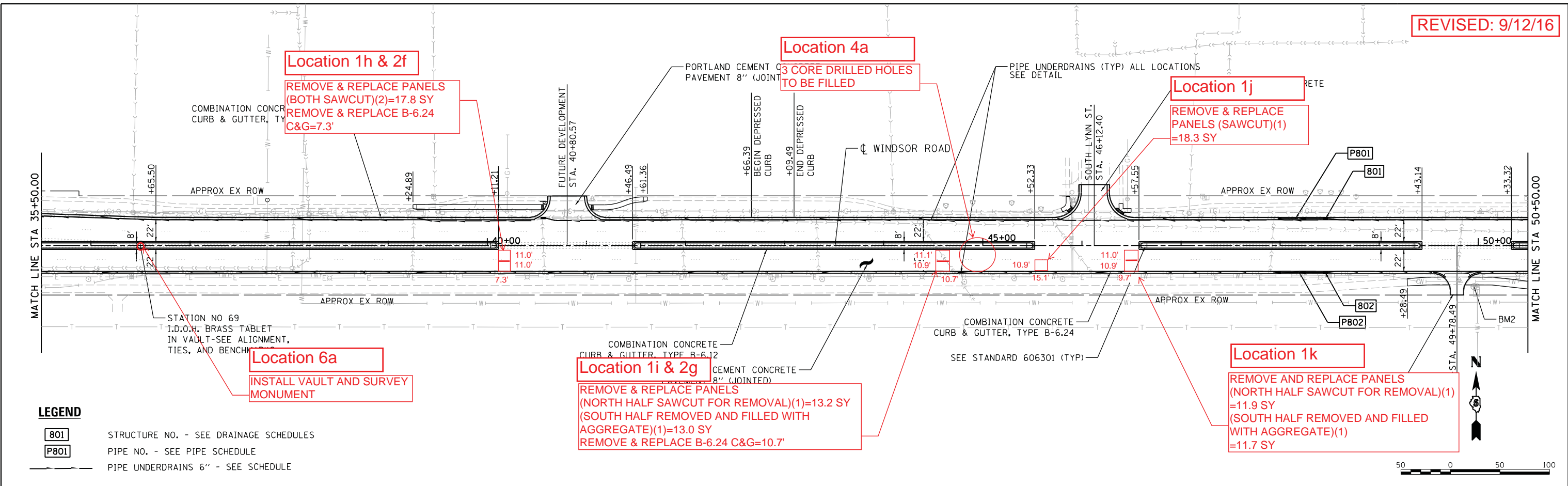
PLAN	SURVEYED	BY	DATE
	PLOTTED		
	NOTED		
	CHECKED		
	FILED		
	NO.		



© Copyright Hanson Professional Services Inc. 2014

PROFILE	SURVEYED	BY	DATE
	PLOTTED		
	GRADES CHECKED		
	STRUCTURE NOTATIONS OK'D		
	NO.		

DESIGNED	MH	4/29/14
DRAWN	RSJ	4/29/14
REVIEWED	MH	4/29/14



FILE NAME =	USER NAME =	DESIGNED -	REVISOR -	STATE OF ILLINOIS DEPARTMENT OF TRANSPORTATION	PLAN & PROFILE - (WINDSOR RD.) WINDSOR ROAD	F.A.P. RT.:	SECTION	COUNTY	TOTAL SHEETS	SHEET NO.
D513L0201-shr-plnprf03	pop00275	DRAWN -	REVISOR -			7145	13-00540-00-PV	CHAMPAIGN	80	30
MODEL NAME =	PLOT SCALE =	CHECKED -	REVISOR -			13L0201		CONTRACT NO.	91515	
Plan and Profile	100.0000' / in.	DATE =	REVISOR -			ILLINOIS FED. AID PROJECT				

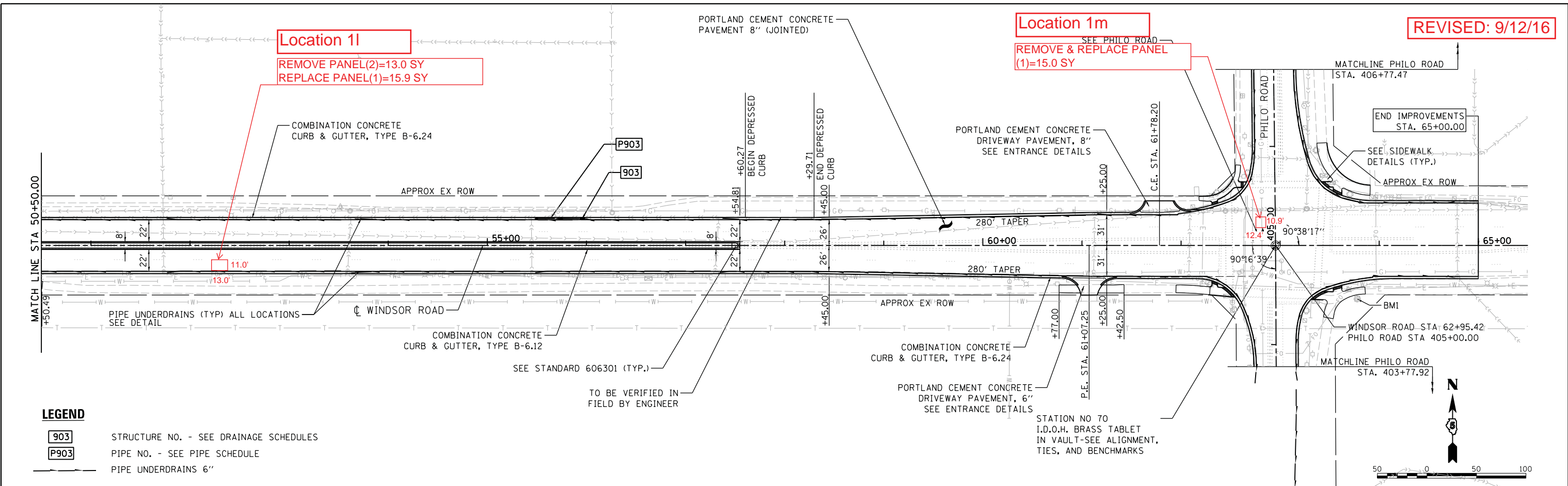
PENTABLE NAME = ...C:\ProgramData\Bentley\MicroStation V8i (SELECTseries)\WorkSpace\pr\Bj\03\000166\NAME.tbl...Plot\DDOT.pdf_600dpi.pltcf

PLAN	SURVEYED	BY	DATE
NOTE BOOK	PLOTTED		
NO.	ALIGNED		
	CHECKED		
	FILE NAME		



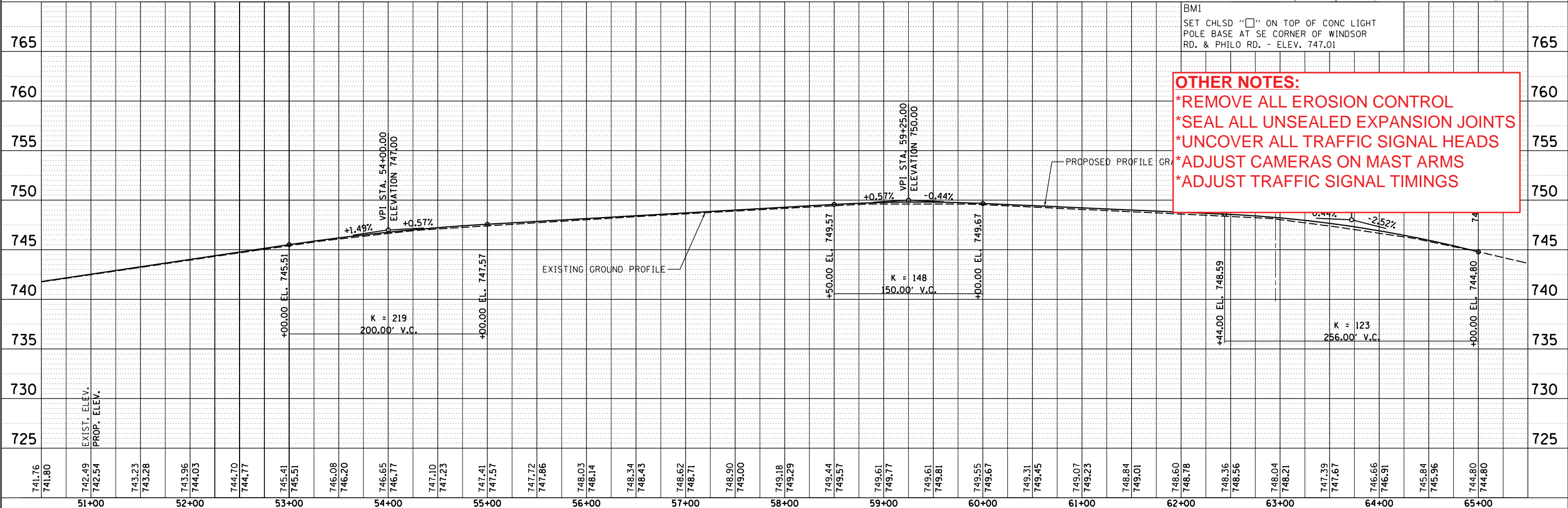
PROFILE	SURVEYED	BY	DATE
NOTE BOOK	PLOTTED		
NO.	GRADES CHECKED		
	STRUCTURE		
	NOT AT THIS OFFICE		

DESIGNED	MH	4/29/14
DRAWN	RSJ	4/29/14
REVIEWED	MH	4/29/14



LEGEND

- 903 STRUCTURE NO. - SEE DRAINAGE SCHEDULES
- P903 PIPE NO. - SEE PIPE SCHEDULE
- PIPE UNDERDRAINS 6"



OTHER NOTES:
 *REMOVE ALL EROSION CONTROL
 *SEAL ALL UNSEALED EXPANSION JOINTS
 *UNCOVER ALL TRAFFIC SIGNAL HEADS
 *ADJUST CAMERAS ON MAST ARMS
 *ADJUST TRAFFIC SIGNAL TIMINGS

FILE NAME =	USER NAME = johns00944	DESIGNED - MH	REVISIED -	STATE OF ILLINOIS DEPARTMENT OF TRANSPORTATION	PLAN & PROFILE - (WINDSOR RD.) WINDSOR ROAD		F.A.P. RTE. 7145	SECTION 13-00540-00-PV	COUNTY CHAMPAIGN	TOTAL SHEETS 80	SHEET NO. 31
D513L0201-sht-plnprf04	PLOT SCALE = 100.0000' / in.	DRAWN - RSJ	REVISIED -		SCALE: 1" = 50'	SHEET 4 OF 4 SHEETS	STA.	TO STA.	CONTRACT NO. 13L0201	ILLINOIS FED. AID PROJECT	91515
MODEL NAME = Plan and Profile	PLOT DATE = 06/12/2014	CHECKED - MH	REVISIED -								
		DATE = 05-03-2014	REVISIED -								

PENTABLE NAME = ...C:\ProgramData\Bentley\MicroStation V8i (SELECTseries)\Workspace\pr\Bj02689768\NAME.tbl...Plot\DDOT.pdf.600dpi.pltcf

Location 2h

REMOVE & REPLACE B-6.24 C&G= 4.0 LF

Location 1n

REMOVE & REPLACE PANEL(1)=6.7 SY

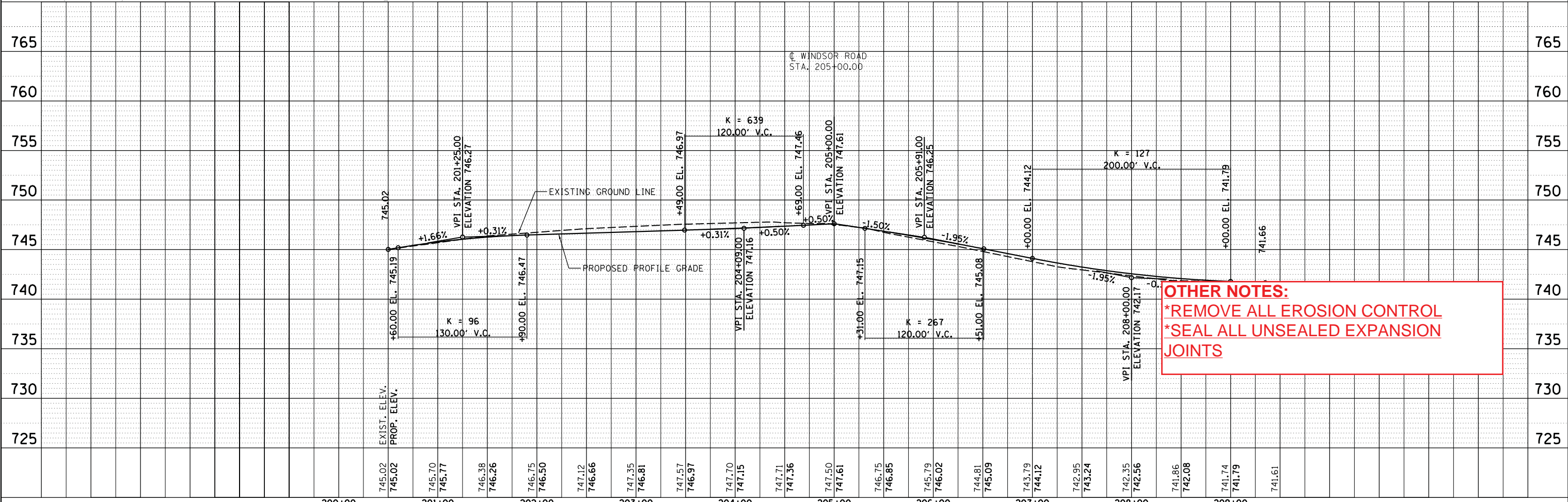
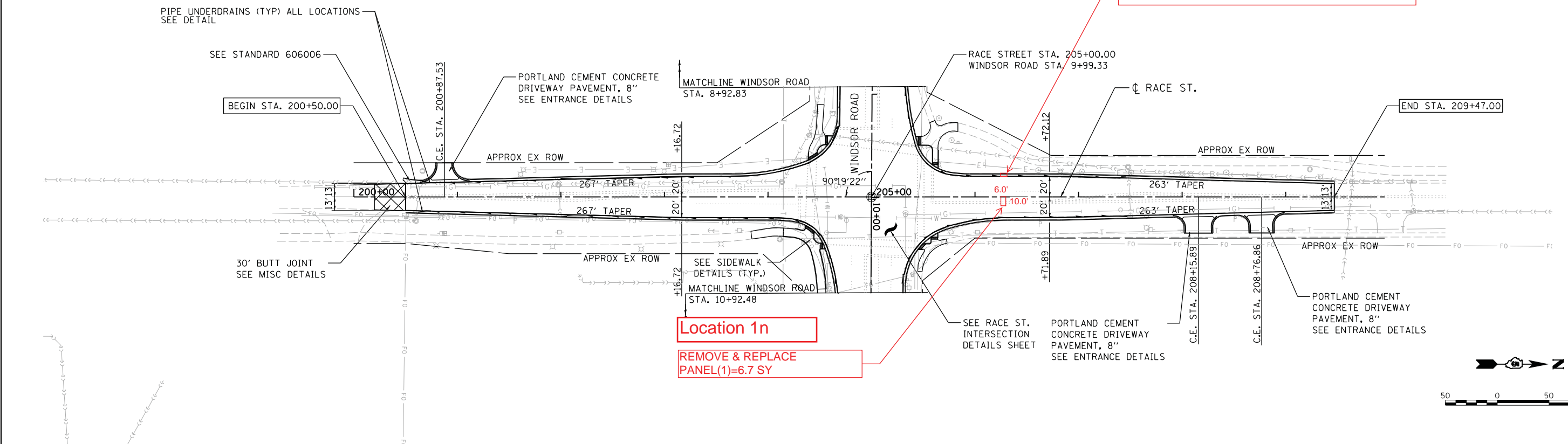
OTHER NOTES:
 *REMOVE ALL EROSION CONTROL
 *SEAL ALL UNSEALED EXPANSION JOINTS

PLAN	SURVEYED	DATE
	ALIGNED	
	CHECKED	
	NO. _____	
	FILE NAME	



PROFILE	SURVEYED	DATE
	GRADES	
	CHECKED	
	STRUCTURE	
	NOT AT THIS OFFICE	

DESIGNED	MH	4/29/14
DRAWN	RSJ	4/29/14
REVIEWED	MH	4/29/14



FILE NAME =	USER NAME = johns00944	DESIGNED - MH	REVISED -	STATE OF ILLINOIS DEPARTMENT OF TRANSPORTATION	PLAN & PROFILE - (RACE ST.) WINDSOR ROAD	F.A.P. RTE.	SECTION	COUNTY	TOTAL SHEETS	SHEET NO.
D513L0201-shr-plnprf05	PLOT SCALE = 100.0000' / in.	DRAWN - RSJ	REVISED -			7145	13-00540-00-PV	CHAMPAIGN	80	32
MODEL NAME =	CHECKED - MH	REVIEWED -	REVISED -			13L0201		CONTRACT NO.	91515	
Plan and Profile	DATE = 05-03-2014	REVISED -	REVISED -			ILLINOIS FED. AID PROJECT				

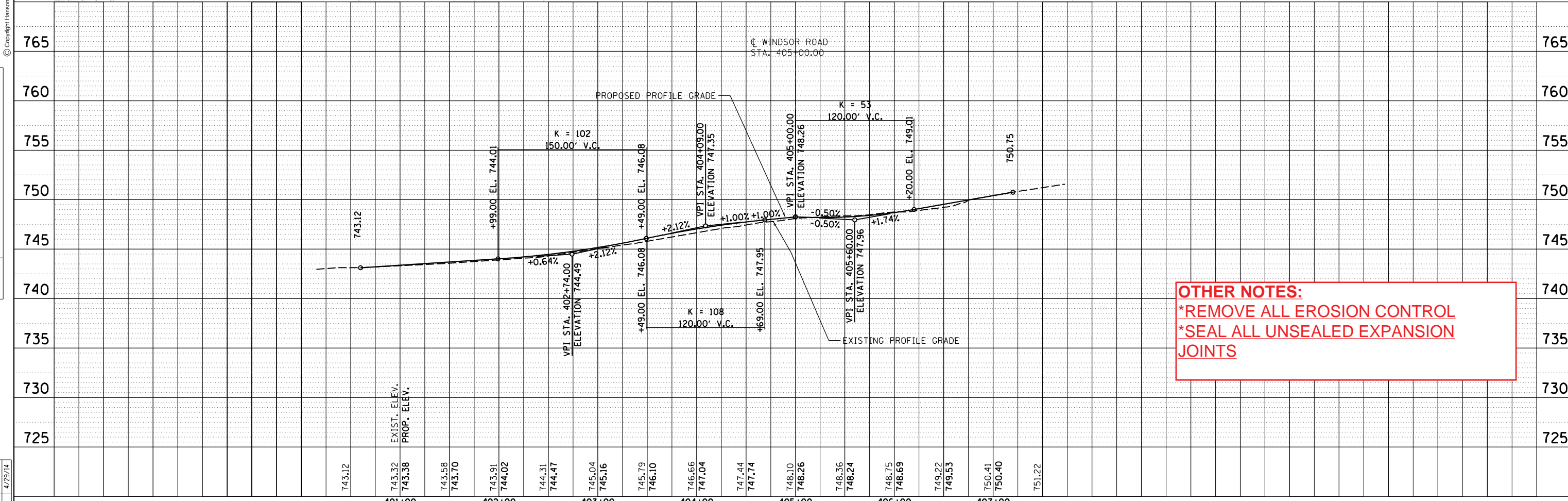
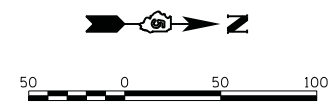
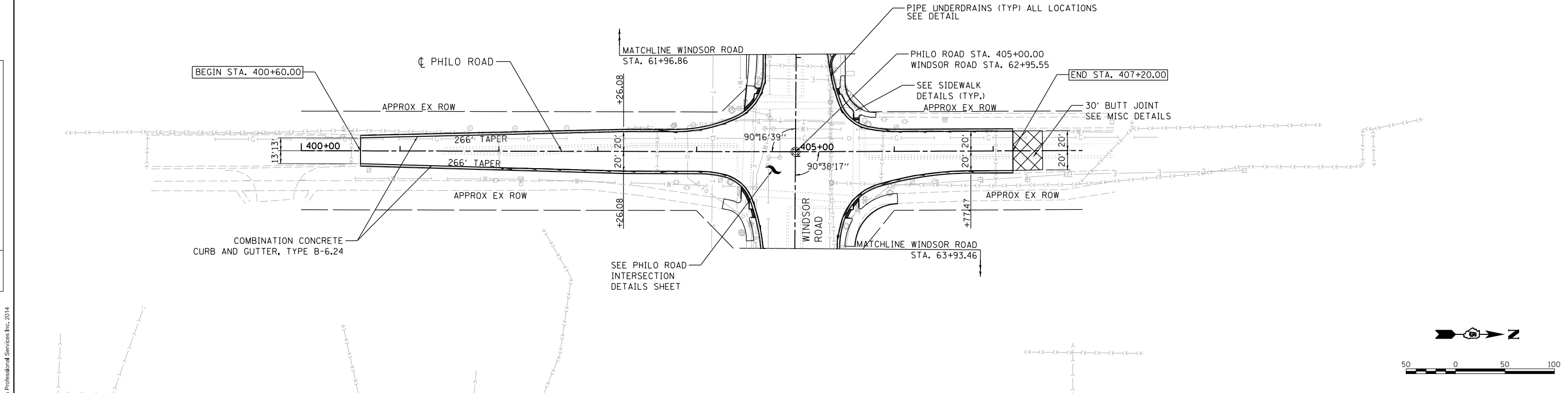
PENTABLE NAME = ...C:\ProgramData\Bentley\MicroStation V8i (SELECTseries)\Workspace\pr\Bj03t6R76R\NAME.tbl...Plot\100T.pdf_680dpi.pltcf

DATE	
BY	
PLAN	
NO. _____	
NO. _____	
NO. _____	
NO. _____	
NO. _____	



DATE	
BY	
PROFILE	
NO. _____	
NO. _____	
NO. _____	
NO. _____	
NO. _____	

DESIGNED	MH	4/29/14
DRAWN	RSJ	4/29/14
REVIEWED	MH	4/29/14



OTHER NOTES:
 *REMOVE ALL EROSION CONTROL
 *SEAL ALL UNSEALED EXPANSION JOINTS

FILE NAME =	USER NAME = johns00944	DESIGNED - MH	REVISIED -	STATE OF ILLINOIS DEPARTMENT OF TRANSPORTATION	PLAN & PROFILE - (PHILO RD.) WINDSOR ROAD	F.A.P. RTE.	SECTION	COUNTY	TOTAL SHEETS	SHEET NO.
D513L0201-sht-plnprf06	DRAWN - RSJ	REVISIED -	7145			13-00540-00-PV	CHAMPAIGN	80	33	
MODEL NAME = Plan and Profile	CHECKED - MH	REVISIED -	13L0201				CONTRACT NO.	91515		
PLOT DATE = 06/12/2014	DATE - 05-03-2014	REVISIED -	ILLINOIS FED. AID PROJECT							

SCALE: 1" = 50' SHEET 1 OF 1 SHEETS STA. TO STA.

PENTABLE NAME = ...\\C:\ProgramData\Bentley\MicroStation V8i (SELECTseries)\Workspace\prb\0268768\NAME.tbl\Plot\1D0T.pdf_680dpi.pltcfq