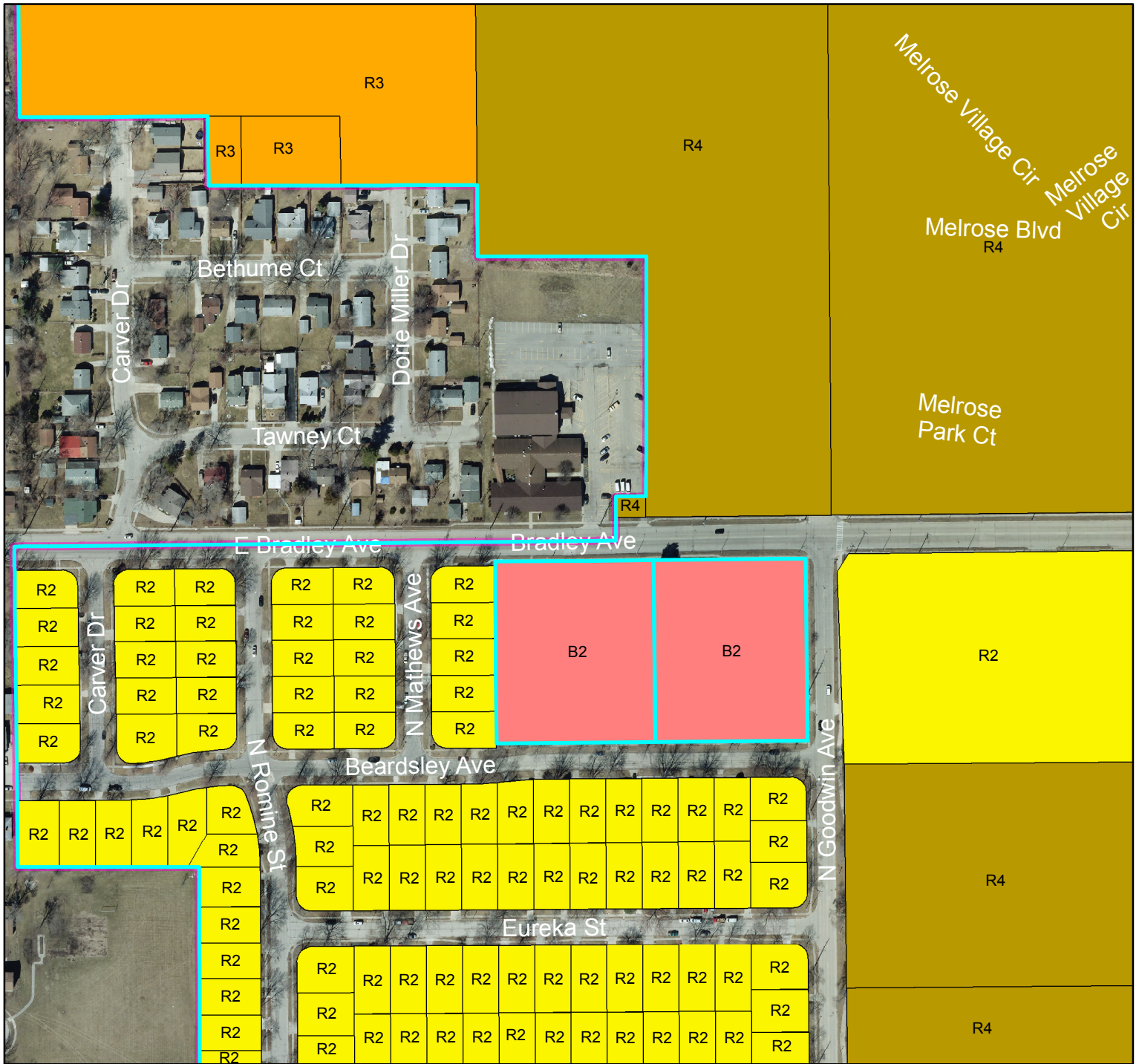


Revised Zoning Map: Alpha and Omega Church



Zoning Districts



The rezoned addresses of 1501 N Goodwin Avenue and 1205 W Bradley Avenue, totaling approximately 3.603 acres from R-2, from R-2, Single Family Residential District to B-2 Neighborhood Business-Arterial District. Their future land use designation was also changed from Residential (Urban Pattern) to Community Business.

