

# **Urbana & Champaign Sanitary District 2016 Update for the Urbana City Council**

**by**

**Rick Manner**

**UCSD Executive Director**

**January 25, 2016**



**URBANA & CHAMPAIGN  
SANITARY DISTRICT**

# Urbana & Champaign Sanitary District

- Last update was 2014
- Today's topics
  - 2<sup>nd</sup> Street Pump Station Construction
  - UCSD Future Service Areas
  - Cronus Update
  - UCSD Rate Evaluation

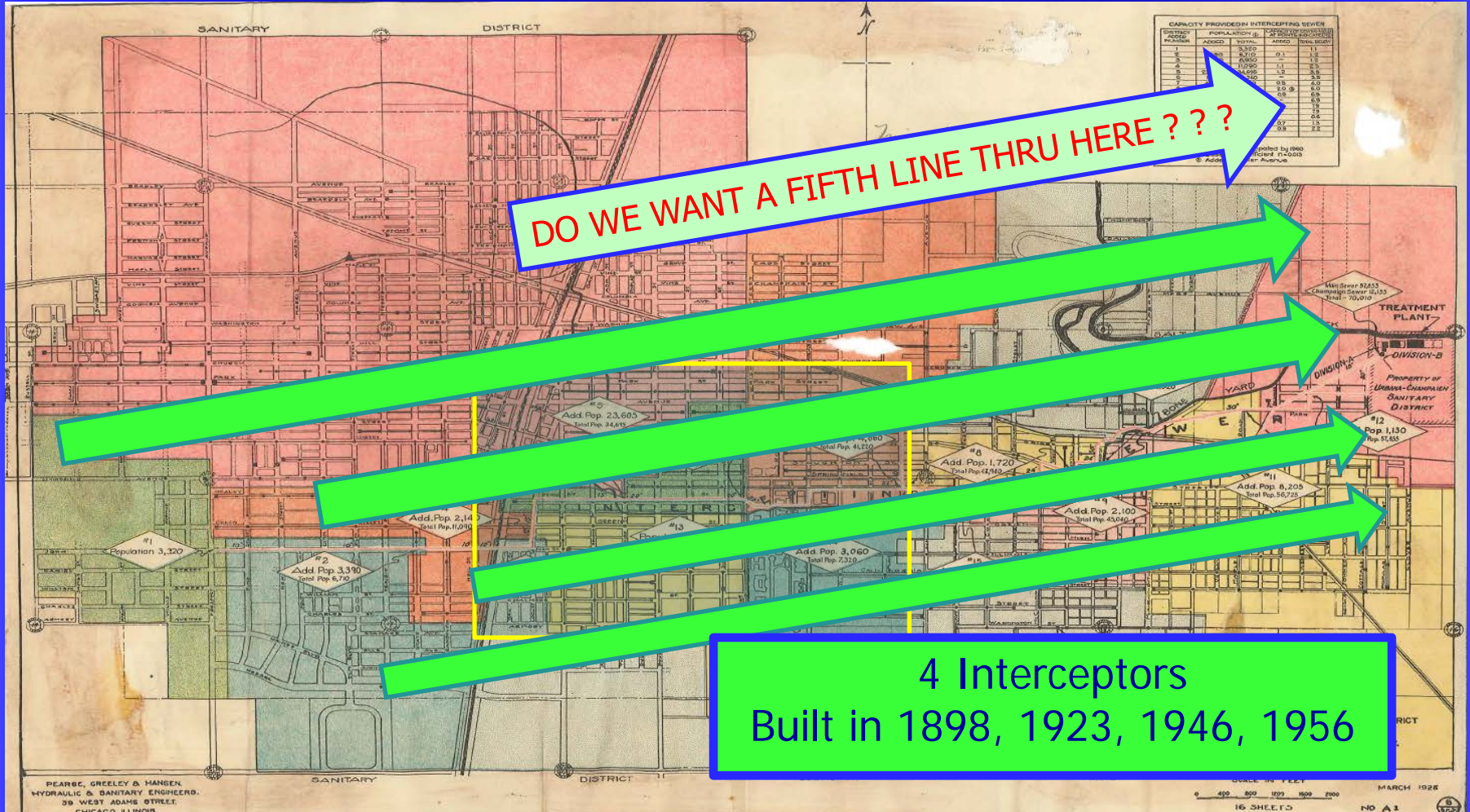


~~Proposed~~  
**2<sup>nd</sup> Street  
Pump Station  
& Forcemain**



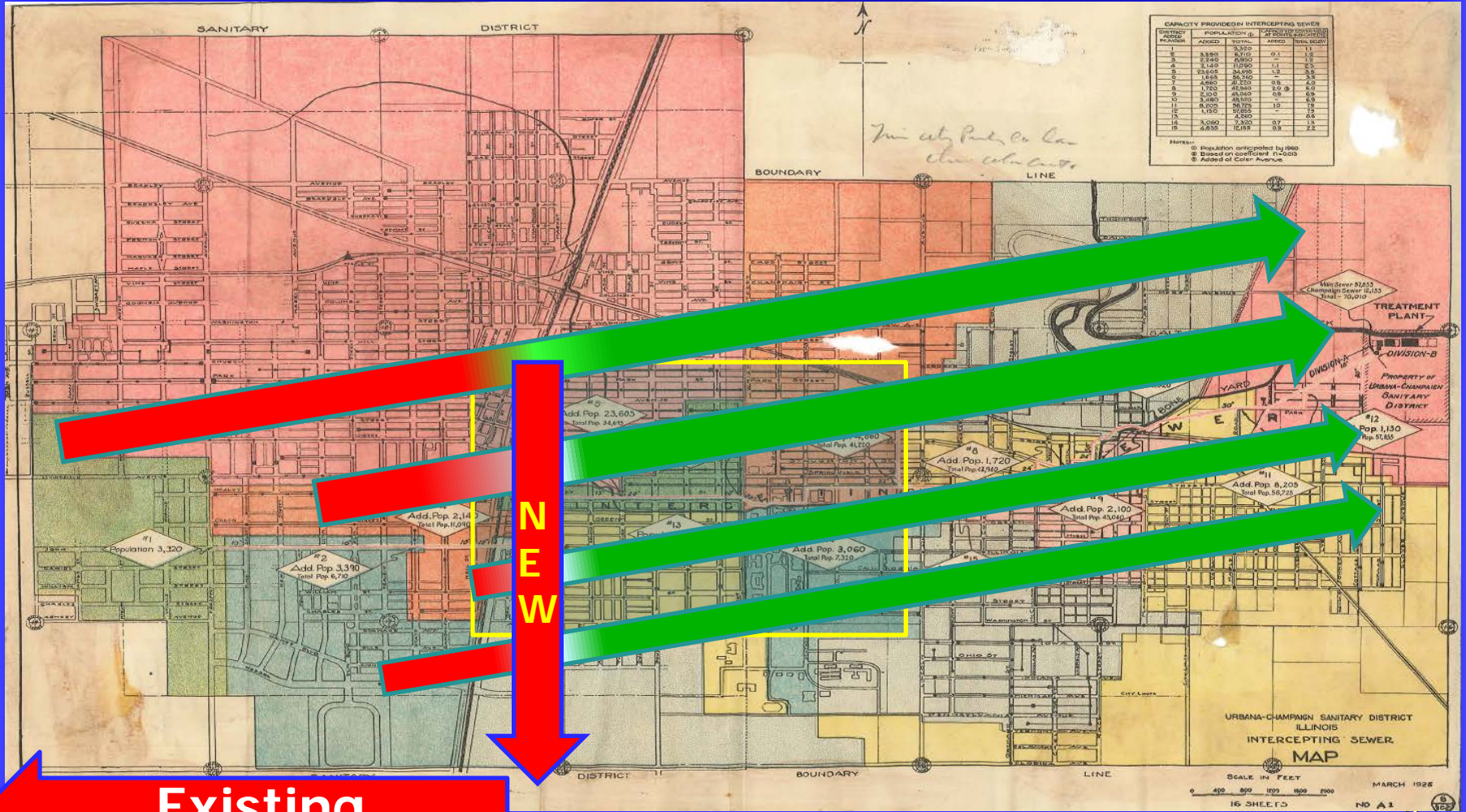
URBANA & CHAMPAIGN  
SANITARY DISTRICT

# 2<sup>nd</sup> Street Pump Station & Forcemain Dilemma





# 2<sup>nd</sup> Street Pump Station & Forcemain Solution



## 2<sup>nd</sup> Street Pump Station & Forcemain

- Redirect flow from Marketplace, Kraft, and downtown Champaign to SW Plant
  - Addresses growth in all three “downtown” areas
  - Will make room for new sewage in existing pipes
  - Avoids most built-up areas of campus, downtowns
  - Accommodates higher “livable city” densities
  - “Only” ~ \$8 million project
  - *Paid via developers’ Interceptor Cost Recovery Fees*



# 2<sup>nd</sup> Street Pump Station & Forcemain

- Side Benefits of this solution:
  - Reduces downstream sewer overloading
  - Allows increase in flow from Kraft, Market Place, etc.
  - Also allows increase in flow from Urbana core parcels
  - UI to possibly eliminate Orchard Downs pump station
  - Initially Cronus advantages were discussed, BUT due to uncertainty, it was removed from consideration
  - *In 2014 started due to local development pressures*
  - ~~Installs a trail through Washington Park?~~



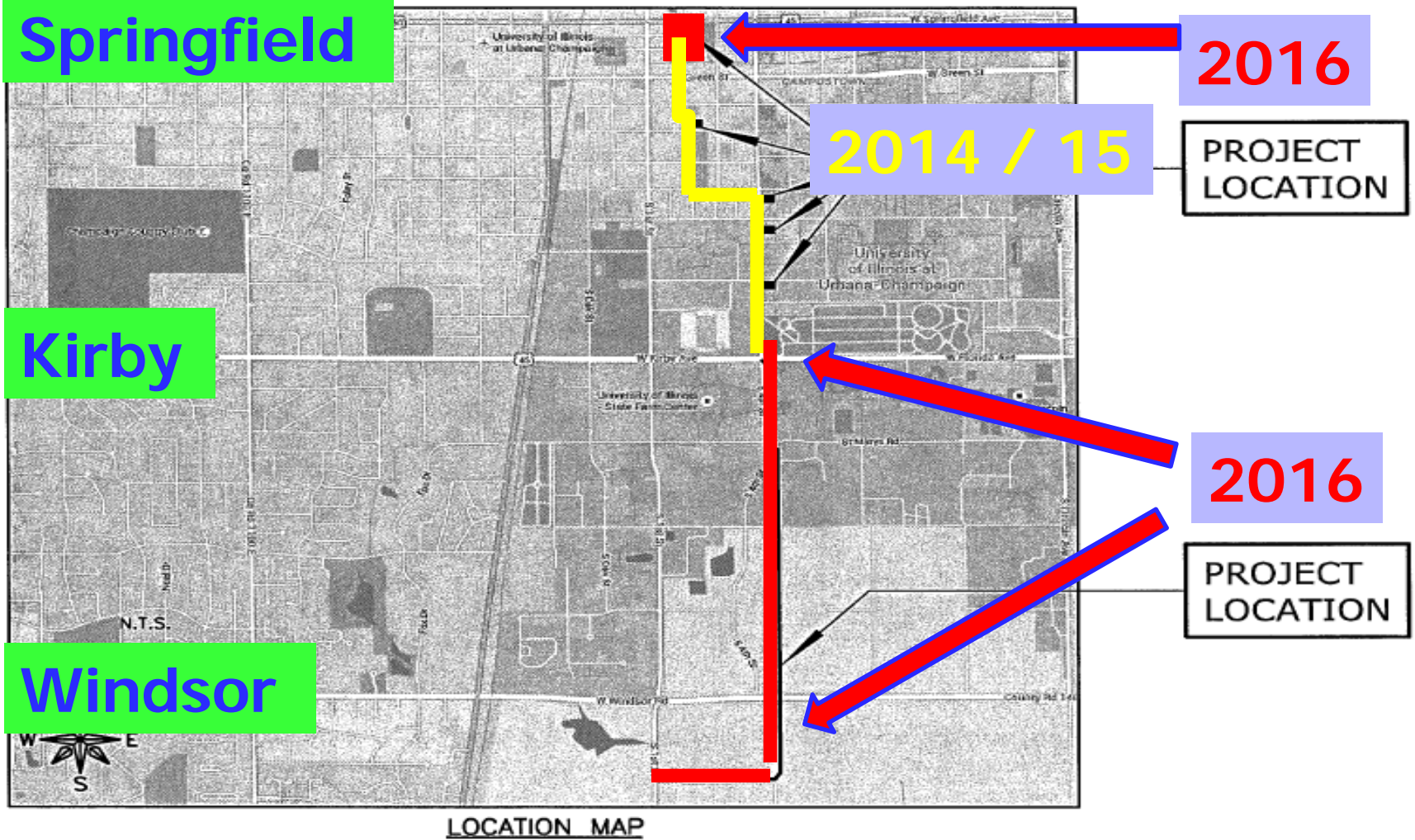


# 2<sup>nd</sup> Street Pump Station & Forcemain

Springfield

Kirby

Windsor



2016

PROJECT LOCATION

2014 / 15

2016

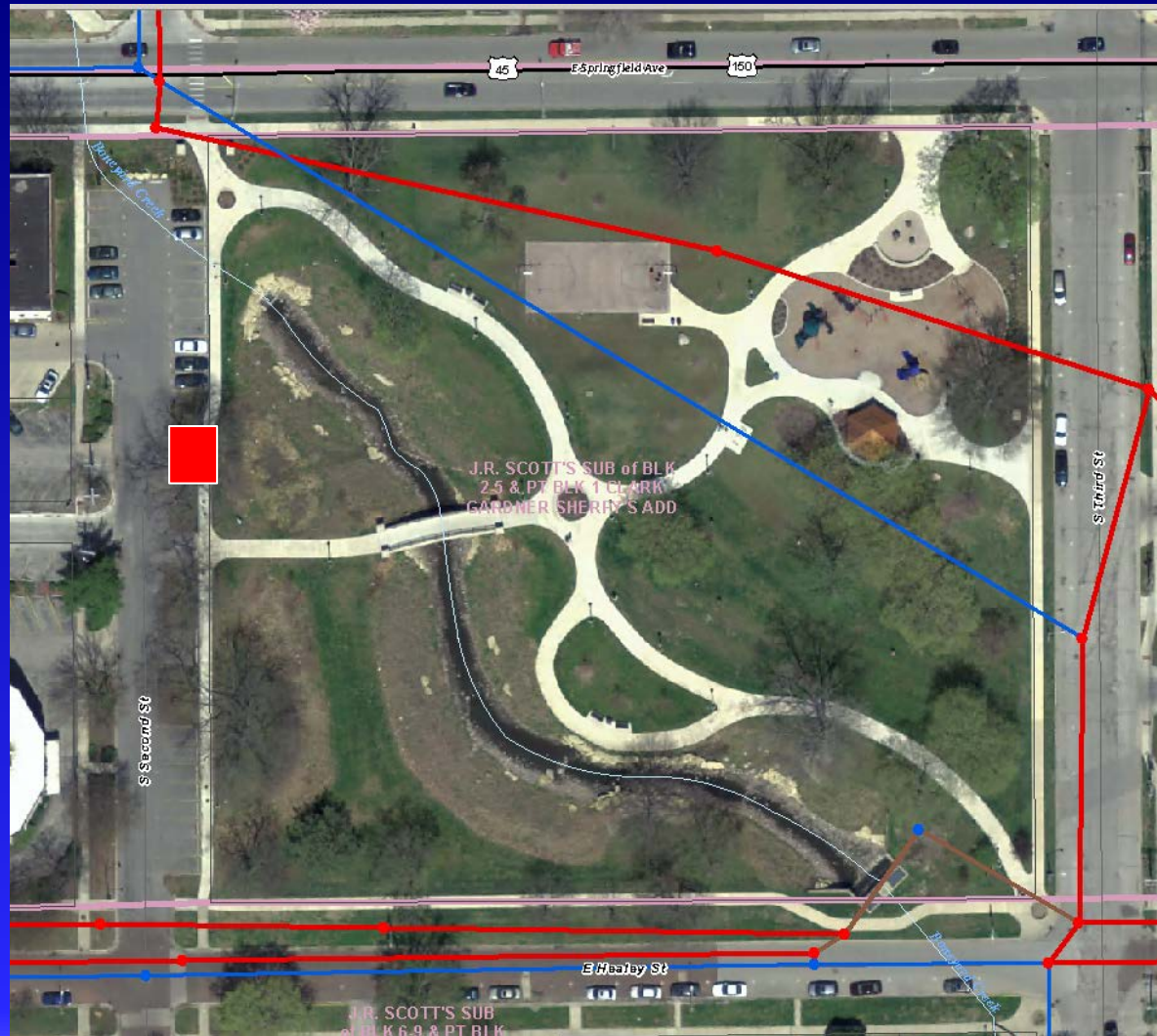
PROJECT LOCATION



URBANA & CHAMPAIGN  
SANITARY DISTRICT

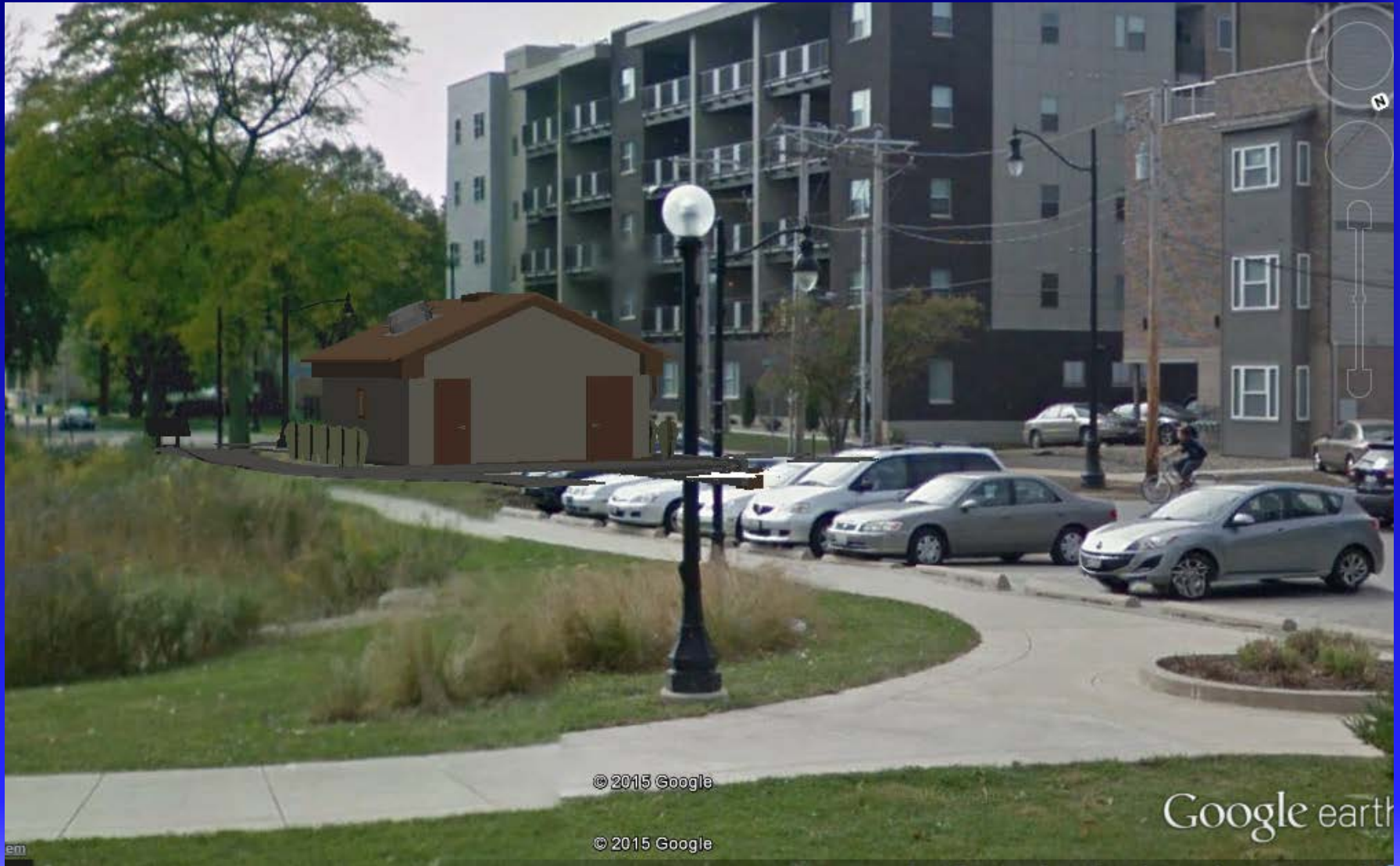


# 2<sup>nd</sup> Street Pump Station (Just west of Scott Park)



# 2<sup>nd</sup> Street Pump Station

(Just west of Scott Park)



© 2015 Google

© 2015 Google

Google earth



# 2<sup>nd</sup> Street Pump Station

(Just west of Scott Park)



Goal: Operational early in 2017.

First interceptor project impacting core UCSD areas in 60 years.

© 2015 Google

© 2015 Google

Google earth



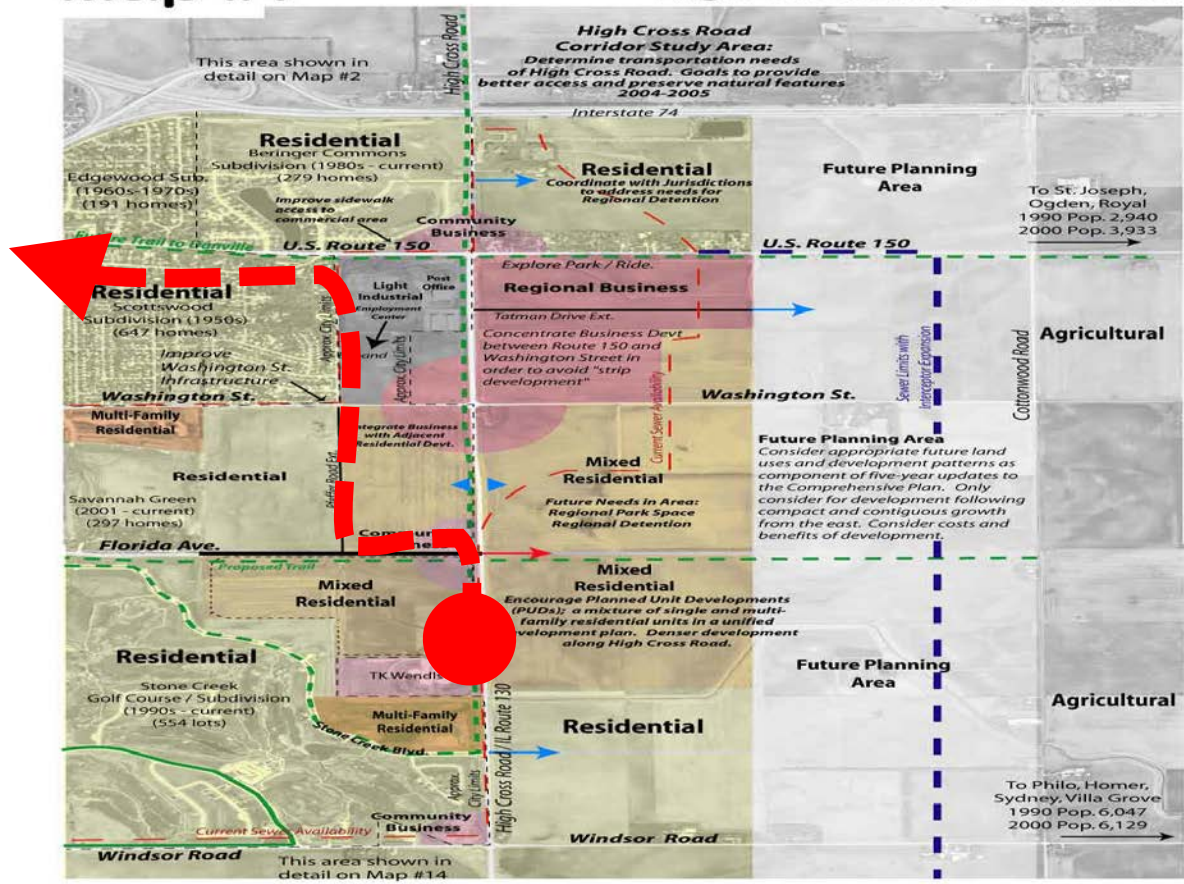
# UCSD Future Service Area



# UCSD Future Service Area

**Map #7**

**High Cross Road Corridor**



**ADOPTED**

April 11, 2005

Map Created by City of Urbana  
Community Development Services Dept.



**Access Management on High Cross Road**

**Direction and approximate location.**  
The exact location of roadways and/or right-of-way dedication depends on a variety of factors.

**Pre-determined location for extension.**  
The desired location of roadways and/or right-of-way dedication is known though further study is required to determine the final design.

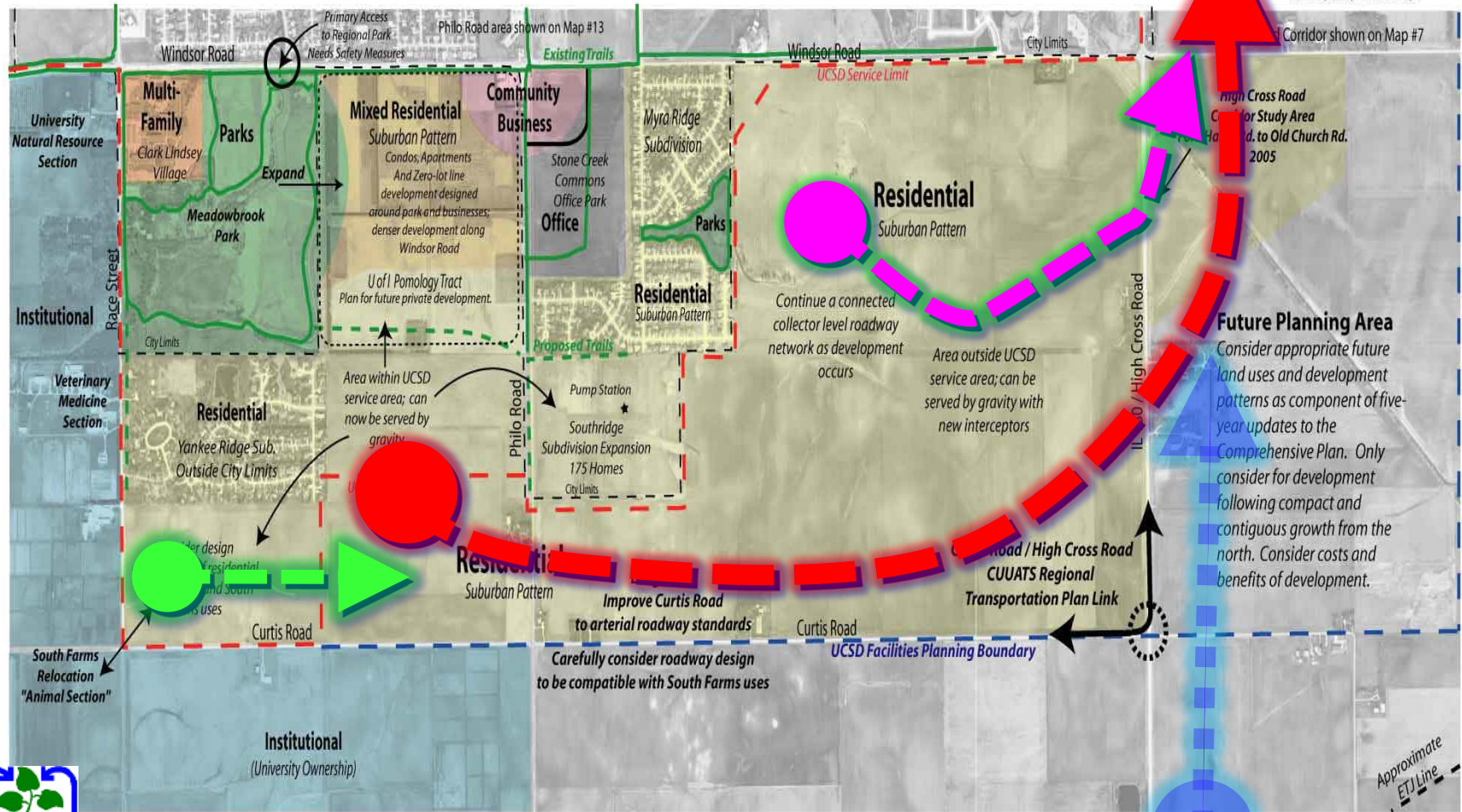
Note: See Appendix "D" Mobility Map

# UCSD Future Service Area

**Map #14**  
South Urbana

**ADOPTED**

April 11, 2005  
Map Created by City of Urbana  
Community Development Services Dept.





# Cronus Update



# Cronus Update

- Easements now in place for entire route.
- Still no "Go" for construction.
- Full start-up at 36 months after "Go".
- Effluent sales start slowly at 28 months.



# Non-Cronus Update

- Recent decisions are independent of Cronus
  - **2<sup>nd</sup> Street Pump Station** is needed to address growth in central core of UCSD.
    - In early 2014 UCSD decided this when Cronus still had not announced choice of Tuscola.
  - **Rate Evaluation** is based upon current facts
    - Since sales won't start until 2019, even a 5 year plan is not strongly impacted. Decided to disregard its impact
    - Steady volume of sales will not be known for 4+ years





# UCSD Rate Study



URBANA & CHAMPAIGN  
SANITARY DISTRICT

# Only Three Primary Income Sources

## – User Charge

- Pays for day to day operation – **NOT** capital improvement

## – Connection Permit Fees

- Primarily expansion of capacity (i.e. new flow)
- Some increased regulation / technology / modernization

## – Interceptor Cost Recovery Fees

- 2<sup>nd</sup> Street pump station is largest new demand
- Next large projects: East Urbana or Curtis Interchange

\* zero property tax income, since 1980s



# UCSD Rate Study

- Driving forces
  - 2007 financial plan recommended 3% increases through May 2016
  - 2008 economic crisis problems at UCSD
    - Interest rates crash
    - ACH closes
    - Development income disappeared for 4 years
    - Recent water conservation practices are working, so fewer gallons. But many costs are fixed...





# UCSD Rate Study

- Would like to do 5 year planning
  - Waited out 2008 recession's impacts
    - Some catching up for depleted reserves is necessary
    - Can do gradual adjustments, even with economic chaos
  - Assumes no Cronus income
    - Soonest purchases of effluent is sometime in 2019
  - Aim for steady, incremental changes
  - "No surprises"



# Thank You

Questions???

Rick Manner

[rfmanner@u-csd.com](mailto:rfmanner@u-csd.com)

(217) 367-3409



URBANA & CHAMPAIGN  
SANITARY DISTRICT